

UNITED STATES  
DEPARTMENT OF THE INTERIOR  
GEOLOGICAL SURVEY

## APPLICATION FOR PERMIT TO DRILL, DEEPEN, OR PLUG BACK

## 1a. TYPE OF WORK

DRILL ☒DEEPEN ☐PLUG BACK ☐

## b. TYPE OF WELL

OIL  
WELL ☐GAS  
WELL ☒

OTHER

SINGLE  
ZONE ☒MULTIPLE  
ZONE ☐

## 2. NAME OF OPERATOR

Blackwood &amp; Nichols Co., LTD

## 3. ADDRESS OF OPERATOR

P.O. Box 1237, Durango, CO 81302-1267

## 4. LOCATION OF WELL (Report location clearly and in accordance with any State requirements.)\*

At surface

1070'FNL - 1215'FEL

At proposed prod. zone

## 14. DISTANCE IN MILES AND DIRECTION FROM NEAREST TOWN OR POST OFFICE\*

12 1/2 miles NE of Blanco, New Mexico

## 15. DISTANCE FROM PROPOSED\*

LOCATION TO NEAREST  
PROPERTY OR LEASE LINE, FT.  
(Also to nearest drlg. unit line, if any)

1215'

## 16. NO. OF ACRES IN LEASE

616.32

18. DISTANCE FROM PROPOSED LOCATION\*  
TO NEAREST WELL, DRILLING, COMPLETED,  
OR APPLIED FOR, ON THIS LEASE, FT.

300'

## 19. PROPOSED DEPTH

3467'

17. NO. OF ACRES ASSIGNED  
TO THIS WELL

295.22

## 20. ROTARY OR CABLE TOOLS

Rotary

## 21. ELEVATIONS (Show whether DF, RT, GR, etc.)

6323' GL

## 22. APPROX. DATE WORK WILL START\*

May 1, 1989

## 23. Casing and Cementing Program

DRILLING OPERATIONS AUTHORIZED ARE  
SUBJECT TO COMPLIANCE WITH ATTACHED  
"GENERAL REQUIREMENTS"

SIZE OF HOLE	SIZE OF CASING	WEIGHT PER FOOT	SETTING DEPTH	CEMENT RETURN FEET
12 1/4"	9 5/8"	36#	300'	207 cuft to circulate
8 3/4"	7"	23#	3467'	910 cuft to circulate

Propose to spud in the San Jose formation. Will drill a 12 1/4" hole to a TD of 300'. Surface casing will be run and cemented with cement returns to surface. WOC 12 hours. Test to 600 psi. Drill an 8 3/4" hole with fresh water mud to TD of 3467'. No poisonous gas is anticipated. Weighted mud will be used to drill the Fruitland coals. Logs will be run at TD. Casing will be run and cemented in two stages with cement returns to surface. The drilling rig will be released and a completion unit moved on. Cased hole bond and correlation logs will be run. The Fruitland coal intervals will be perforated and frac'd with a fresh water base gel fluid.

RECEIVED  
JUN 02 1989OIL CON. DIV.  
DIST. 3

Surface ownership is Bureau of Reclamation

IN ABOVE SPACE DESCRIBE PROPOSED PROGRAM: If proposal is to deepen or plug back, give data on present productive zone and proposed new productive zone. If proposal is to drill or deepen directionally, give pertinent data on subsurface locations and measured and true vertical depths. Give blowout preventer program, if any.

24.

SIGNED

William F. Clark

TITLE

Operations Manager

DATE

May 15, 1989

(This space for Federal or State office use)

PERMIT NO.

APPROVAL DATE

APPROVED  
AS AMENDED

APPROVED BY

TITLE

DATE

CONDITIONS OF APPROVAL, IF ANY:

NM 000

MAY 30 1989

AREA MANAGER

\*See Instructions On Reverse Side

Submit to Appropriate  
District Office  
State Lease - 4 copies  
Fee Lease - 3 copies

State of New Mexico  
Energy, Minerals and Natural Resources Department

Form C-102  
Revised 1-1-89

OIL CONSERVATION DIVISION

P.O. Box 2088

Santa Fe, New Mexico 87504-2088

DISTRICT I  
P.O. Box 1980, Hobbs, NM 88240

DISTRICT II  
P.O. Drawer DD, Artesia, NM 88210

DISTRICT III  
1000 Rio Brazos Rd., Aztec, NM 87410

WELL LOCATION AND ACREAGE DEDICATION PLAT

All Distances must be from the outer boundaries of the section

Operator Blackwood & Nichols Co., LTD			Lease Northeast Blanco Unit		Well No. 467
Unit Letter A	Section 12	Township 30 North	Range 8 West	NMPM	County San Juan
Actual Footage Location of Well: 1070 feet from the North line and 1215 feet from the East line					
Ground level Elev. 6323' GL	Producing Formation Fruitland Coal		Pool Basin Fruitland Coal		Dedicated Acreage: 295.22 Acres

1. Outline the acreage dedicated to the subject well by colored pencil or hatchure marks on the plat below.

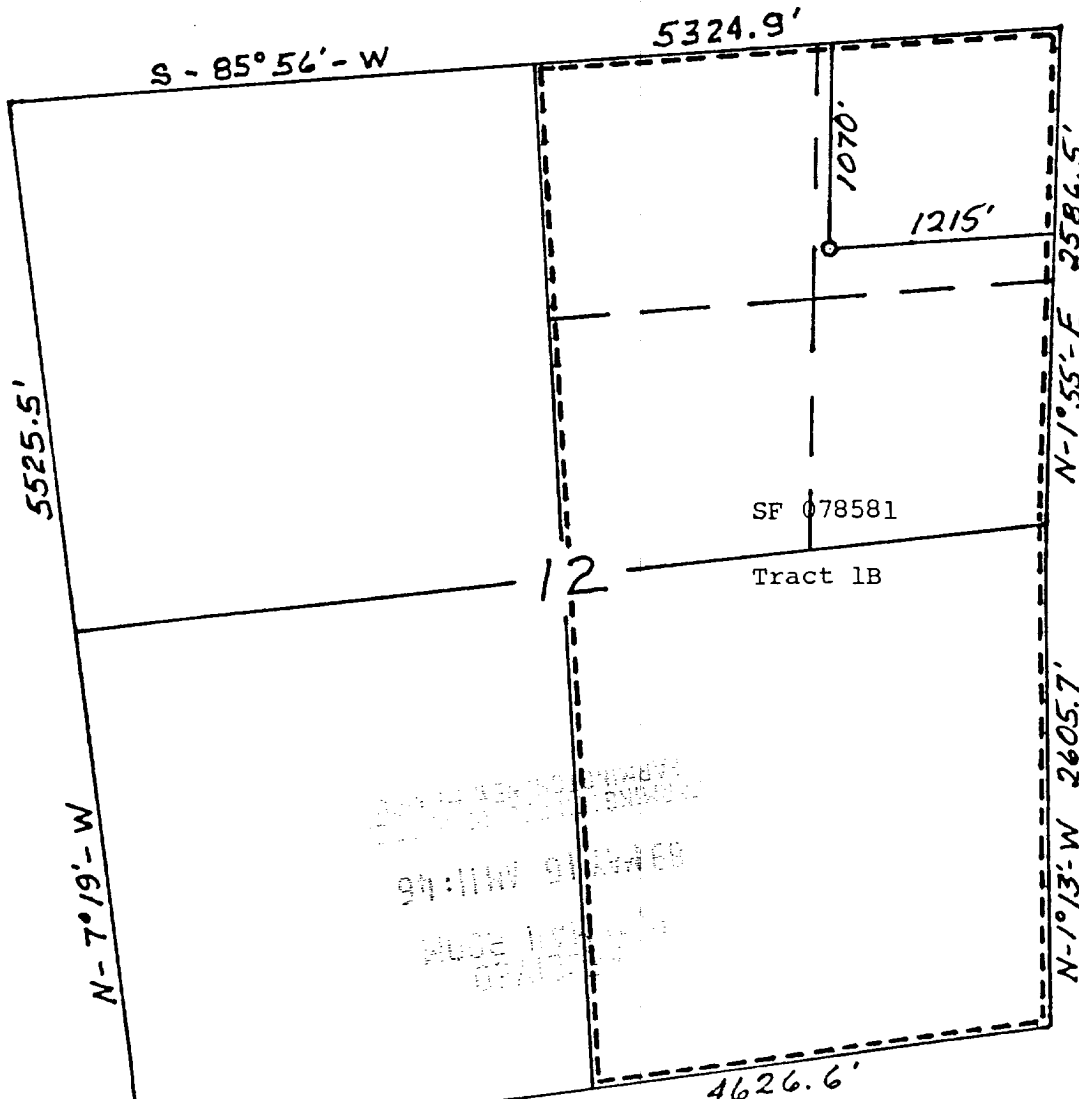
2. If more than one lease is dedicated to the well, outline each and identify the ownership thereof (both as to working interest and royalty).

3. If more than one lease of different ownership is dedicated to the well, have the interest of all owners been consolidated by communitization, unitization, force-pooling, etc.?

☐ Yes ☐ No If answer is "yes" type of consolidation N/A

If answer is "no" list the owners and tract descriptions which have actually been consolidated. (Use reverse side of this form if necessary.)

No allowable will be assigned to the well until all interests have been consolidated (by communitization, unitization, forced-pooling, or otherwise) or until a non-standard unit, eliminating such interest, has been approved by the Division.



OPERATOR CERTIFICATION

I hereby certify that the information contained herein is true and complete to the best of my knowledge and belief.

Signature

William F. Clark

Printed Name

William F. Clark

Position

Operations Manager

Company

Blackwood & Nichols Co.

Date

May 15, 1989

SURVEYOR CERTIFICATION

I hereby certify that the well location shown on this plat was plotted from field notes, actual surveys made by me or under my supervision, and that the same is true and correct to the best of my knowledge and belief.

Date Surveyed

2/25/89

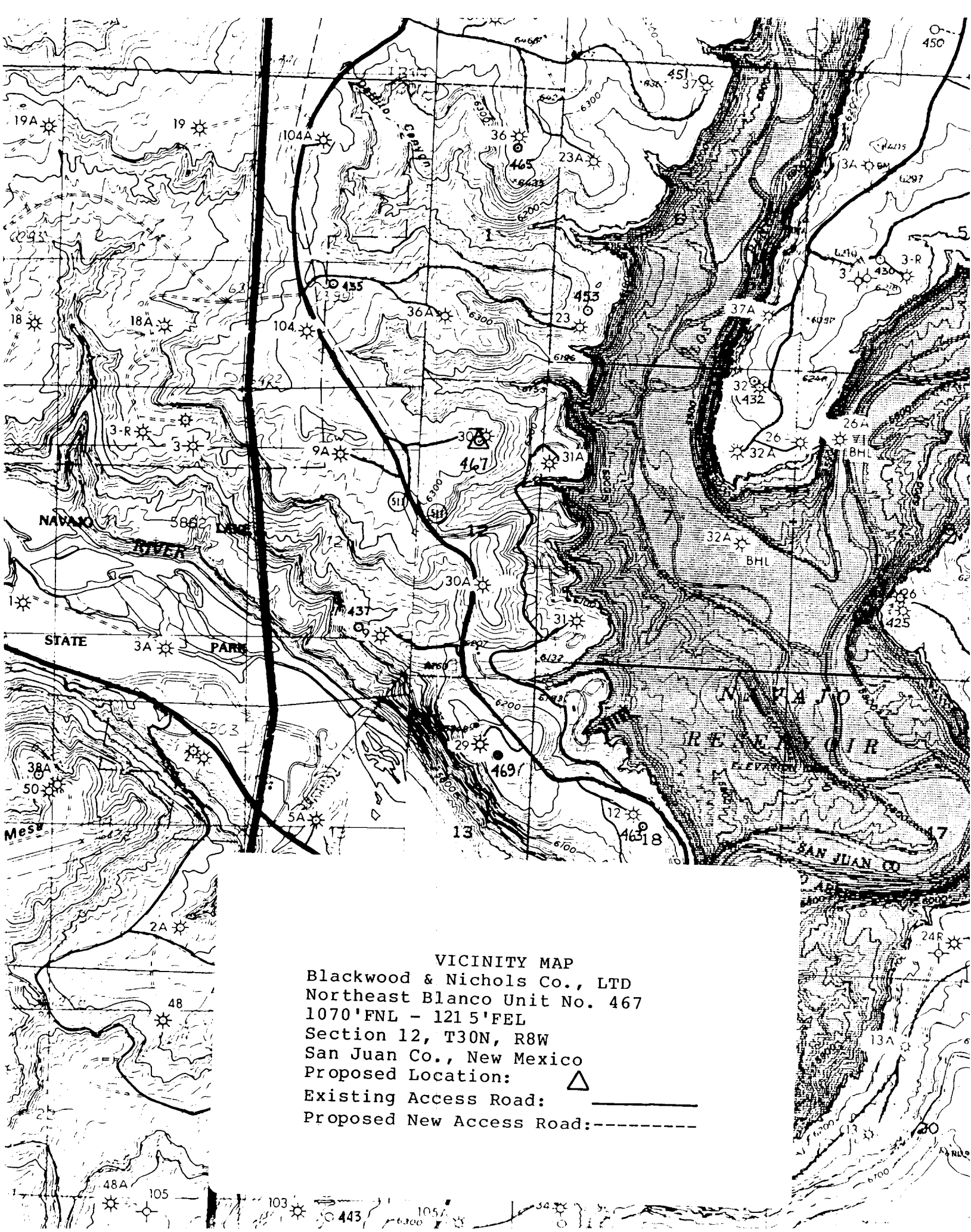
Signature of Seal of Professional Surveyor


G. EDWARDS

6857

Certificate No.

6857



VICINITY MAP  
Blackwood & Nichols Co., LTD  
Northeast Blanco Unit No. 467  
1070'FNL - 1215'FEL  
Section 12, T30N, R8W  
San Juan Co., New Mexico  
Proposed Location:   
Existing Access Road: \_\_\_\_\_  
Proposed New Access Road:-----