

UNITED STATES
DEPARTMENT OF THE INTERIOR
BUREAU OF LAND MANAGEMENT

APPLICATION FOR PERMIT TO DRILL, DEEPEN, OR PLUG BACK

1a. TYPE OF WORK

DRILL ☒

DEEPEN ☐

PLUG BACK ☐

b. TYPE OF WELL

OIL
WELL ☐

GAS
WELL ☒

OTHER

SINGLE
ZONE ☒

MULTIPLE
ZONE ☐

2. NAME OF OPERATOR

D.J. SIMMONS

3. ADDRESS OF OPERATOR

P.O. BOX 1469, FARMINGTON, NEW MEXICO 87499

4. LOCATION OF WELL (Report location clearly and in accordance with any State requirements.)*

At surface

965 FNL, 1690 FEL

At proposed prod. zone

14. DISTANCE IN MILES AND DIRECTION FROM NEAREST TOWN OR POST OFFICE*

2-1/2 MILES SOUTHEAST OF BLANCO, N M

15. DISTANCE FROM PROPOSED*

LOCATION TO NEAREST
PROPERTY OR LEASE LINE, FT.
(Also to nearest drlg. unit line, if any)

965'

16. NO. OF ACRES IN LEASE

640

17. NO. OF ACRES ASSIGNED
TO THIS WELL

320

18. DISTANCE FROM PROPOSED LOCATION*
TO NEAREST WELL, DRILLING, COMPLETED,
OR APPLIED FOR, ON THIS LEASE, FT.

175'

19. PROPOSED DEPTH

2317

20. ROTARY OR CABLE TOOLS

ROTARY

21. ELEVATIONS (Show whether DF, RT, GR, etc.)

5824 GL

DRILLING OPERATIONS AUTHORIZED ARE
SUBJECT TO COMPLIANCE WITH ATTACHED

22. APPROX. DATE WORK WILL START*

ASAP

23.

GENERAL REQUIREMENTS*
PROPOSED CASING AND CEMENTING PROGRAM

This action is subject to technical and
procedural review pursuant to 43 CFR 3165.3
and appeal pursuant to 43 CFR 3165.4.
QUANTITY OF CEMENT

SIZE OF HOLE	SIZE OF CASING	WEIGHT PER FOOT	SETTING DEPTH	
12-1/4"	8-5/8"	24.0#	200'	165 CU. FT. - CIRCULATE
7-7/8"	4-1/2"	10.5#	2317	1053 CU. FT. - CIRCULATE

THE FRUITLAND FORMATION WILL BE COMPLETED

A 3000 PSI WP AND 6000 PSI TEST DOUBLE GATE PREVENTER EQUIPPED WITH
BLIND PIPE RAMS WILL BE USED FOR BLOWOUT PREVENTION ON THIS WELL.

THIS GAS IS DEDICATED.

THE E/2 OF SECTION 29 IS DEDICATED TO THIS WELL

RECEIVED
JUN 09 1989
OIL CON. DIV.
DIST. 3

IN ABOVE SPACE DESCRIBE PROPOSED PROGRAM: If proposal is to deepen or plug back, give data on present productive zone and proposed new productive zone. If proposal is to drill or deepen directionally, give pertinent data on subsurface locations and measured and true vertical depths. Give blowout preventer program, if any.

24.

SIGNED

TITLE

PETROLEUM ENGINEER

DATE

4-17-89

(This space for Federal or State office use)

PERMIT NO.

APPROVAL DATE

APPROVED
AS AMENDED

APPROVED BY

CONDITIONS OF APPROVAL, IF ANY:

TITLE

JUN 05 1989

AREA MANAGER

*See Instructions On Reverse Side

Submit to Appropriate
District Office
State Lease - 4 copies
Fee Lease - 3 copies

State of New Mexico
Energy, Minerals and Natural Resources Department

Form C-102
Revised 1-1-89

OIL CONSERVATION DIVISION

P.O. Box 2088
Santa Fe, New Mexico 87504-2088

DISTRICT I

P.O. Box 1980, Hobbs, NM 88240

DISTRICT II

P.O. Drawer DD, Artesia, NM 88210

DISTRICT III

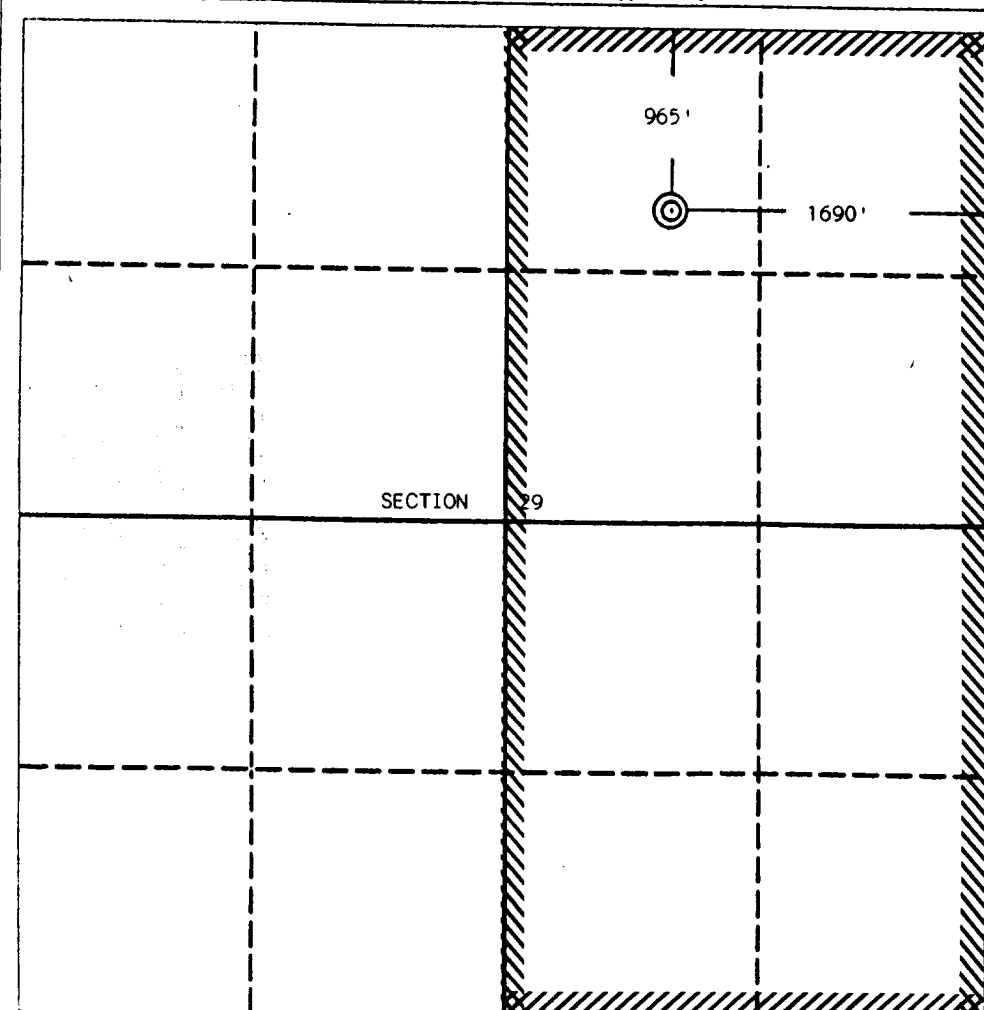
1000 Rio Brazos Rd., Aztec, NM 87410

WELL LOCATION AND ACREAGE DEDICATION PLAT

All Distances must be from the outer boundaries of the section

Operator D. J. Simmons			Lease A. B. Geren		Well No. #6
Unit Letter B	Section 29	Township 29 North	Range 9 West	County San Juan	
Actual Footage Location of Well: 965 feet from the North line and 1690 feet from the East line					
Ground level Elev. 5824	Producing Formation FRUITLAND		Pool BASIN FRUITLAND	Dedicated Acreage: 320 Acres	

1. Outline the acreage dedicated to the subject well by colored pencil or hatchure marks on the plat below.
2. If more than one lease is dedicated to the well, outline each and identify the ownership thereof (both as to working interest and royalty).
3. If more than one lease of different ownership is dedicated to the well, have the interest of all owners been consolidated by communitization, unitization, force-pooling, etc.?
☐ Yes ☐ No If answer is "yes" type of consolidation _____
If answer is "no" list the owners and tract descriptions which have actually been consolidated. (Use reverse side of this form if necessary.) _____
No allowable will be assigned to the well until all interests have been consolidated (by communitization, unitization, forced-pooling, or otherwise) or until a non-standard unit, eliminating such interest, has been approved by the Division.



OPERATOR CERTIFICATION

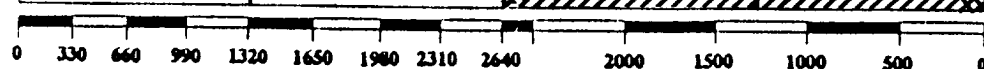
I hereby certify that the information contained herein is true and complete to the best of my knowledge and belief.

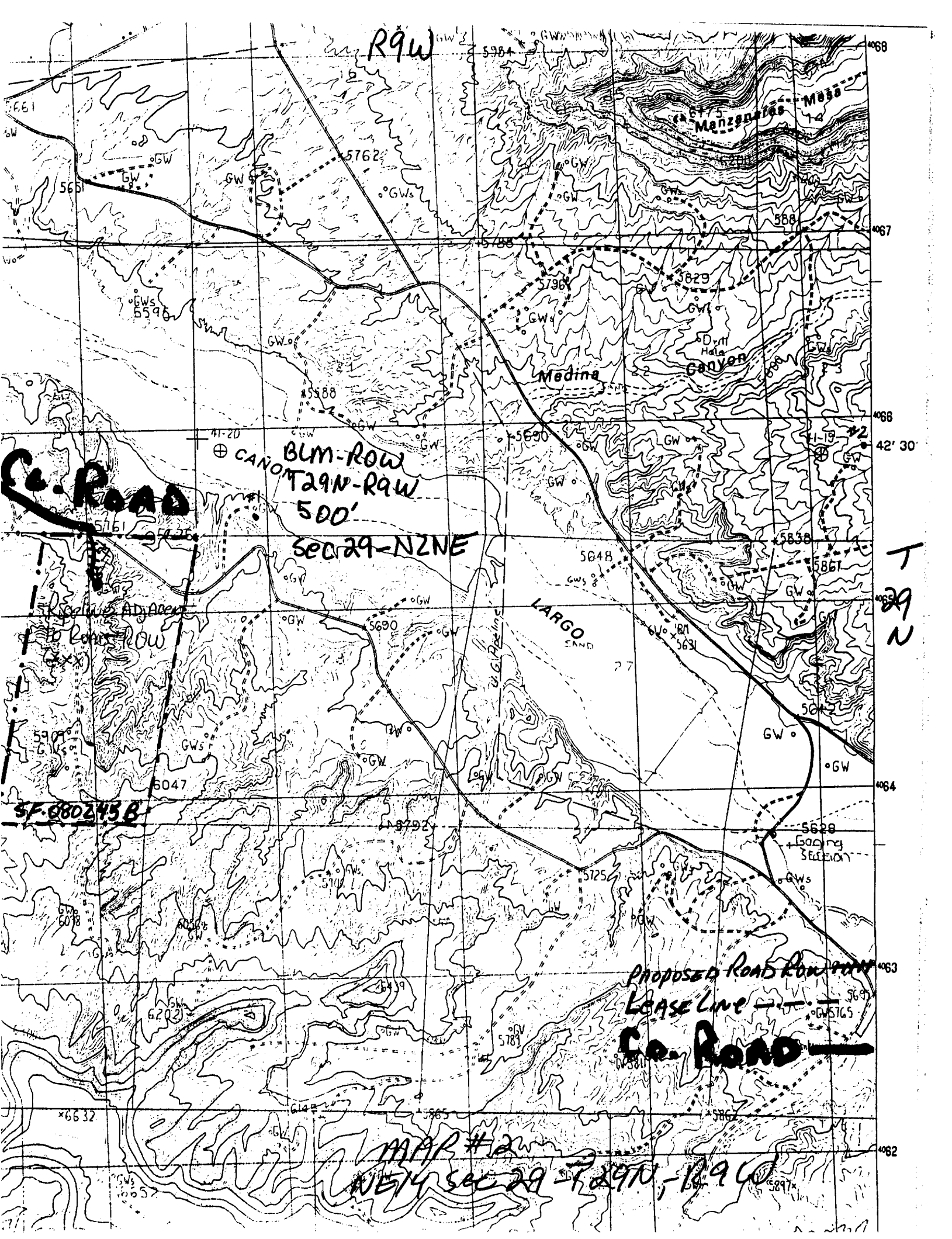
Signature
ROD PINKETT
Printed Name
PETROLEUM ENGINEER
Position
D. J. SIMMONS CO.
Company
APRIL 14, 1989
Date

SURVEYOR CERTIFICATION

I hereby certify that the well location shown on this plat was plotted from field notes of actual surveys made by me or under my supervision, and that the same is true and correct to the best of my knowledge and belief.

Date Surveyed
April 5, 1989
Signature & Seal of Professional Surveyor
Edgar L. Risenhooter
NEW MEXICO
Certification No. 6979
Edgar L. Risenhooter
REGISTERED LAND SURVEYOR





R9W

Manzanitas Mesa

Medina Canyon

LARGO SAND

Co. Road

BLM-ROW
T29N-R9W
500'

SEC 29-N2NE

SF 080243 B

PROPOSED ROAD ROW
LEASE LINE
Co. Road

MAP #2

NE 1/4 SEC 29 - T29N, R9W

T
29
N