

UNITED STATES
DEPARTMENT OF THE INTERIOR
BUREAU OF LAND MANAGEMENT

APPLICATION FOR PERMIT TO DRILL, DEEPEN, OR PLUG BACK

1a. TYPE OF WORK

DRILL ☒

DEEPEN ☐

PLUG BACK ☐

b. TYPE OF WELL

OIL
WELL ☐

GAS
WELL ☐

OTHER

SINGLE
ZONE ☒

MULTIPLE
ZONE ☐

2. NAME OF OPERATOR

TIFFANY GAS COMPANY

3. ADDRESS OF OPERATOR

P.O. DRAWER 3307, FARMINGTON, NM 87499

4. LOCATION OF WELL (Report location clearly and in accordance with any State requirements.)*
At surface

1450' FNL & 1600' FEL
At proposed prod. zone

SAME

14. DISTANCE IN MILES AND DIRECTION FROM NEAREST TOWN OR POST OFFICE*

9 Miles Southeast of Shiprock, NM

15. DISTANCE FROM PROPOSED*
LOCATION TO NEAREST
PROPERTY OR LEASE LINE, FT.
(Also to nearest drlg. unit line, if any)

1450'

16. NO. OF ACRES IN LEASE

4800'

17. NO. OF ACRES ASSIGNED
TO THIS WELL

40 (joint)

18. DISTANCE FROM PROPOSED LOCATION*
TO NEAREST WELL, DRILLING, COMPLETED,
OR APPLYING FOR, ON THIS LEASE, FT.

612'

19. PROPOSED DEPTH

657'

20. ROTARY OR CABLE TOOLS

Rotary

21. ELEVATIONS (SHOW whether DF, RT, GR, etc.)

5000' GR

DEVELOPMENT OF WELL IS LIMITED BY
SUBJECT TO STATE REQUIREMENTS ATTACHED

22. APPROX. DATE WORK WILL START*

June 1989

This action is subject to technical and
procedural review pursuant to 43 CFR 3165.3
and appeal pursuant to 43 CFR 3165.4.

23. PROPOSED CASING AND CEMENTING PROGRAM

SIZE OF HOLE	SIZE OF CASING	WEIGHT PER FOOT	SETTING DEPTH	QUANTITY OF CEMENT
8 3/4"	7"	20#	60'	20 CF
6 1/4"	4 1/2"	10.5#	652'	140 CF

Operator plans to set 4 1/2" casing at top of Dakota, drill one to two feet into Dakota
pay sand, and complete in open hole.

Multiple requirements attached.

RECEIVED
JUL 31 1989
OIL CON. DIV
DIST. 3

IN ABOVE SPACE DESCRIBE PROPOSED PROGRAM: If proposal is to deepen or plug back, give data on present productive zone and proposed new productive zone. If proposal is to drill or deepen directionally, give pertinent data on subsurface locations and measured and true vertical depths. Give blowout preventer program, if any.

SIGNED

JIM HICKS

TITLE Agent/Tiffany Gas Co.

DATE 4/04/89

(This space for Federal or State office use)

PERMIT NO.

APPROVAL DATE

APPROVED
AS AMENDED

APPROVED BY

TITLE

CONDITIONS OF APPROVAL, IF ANY:

Held 06/04 FOR NSL

NMCCC

*See Instructions On Reverse Side

JUL 26 1989
AREA MANAGER

NEW MEXICO OIL CONSERVATION COMMISSION
WELL LOCATION AND ACREAGE DEDICATION PLAT

Form C-102
Supersedes C-428
Effective 1-1-85

All distances must be from the outer boundaries of the Section.

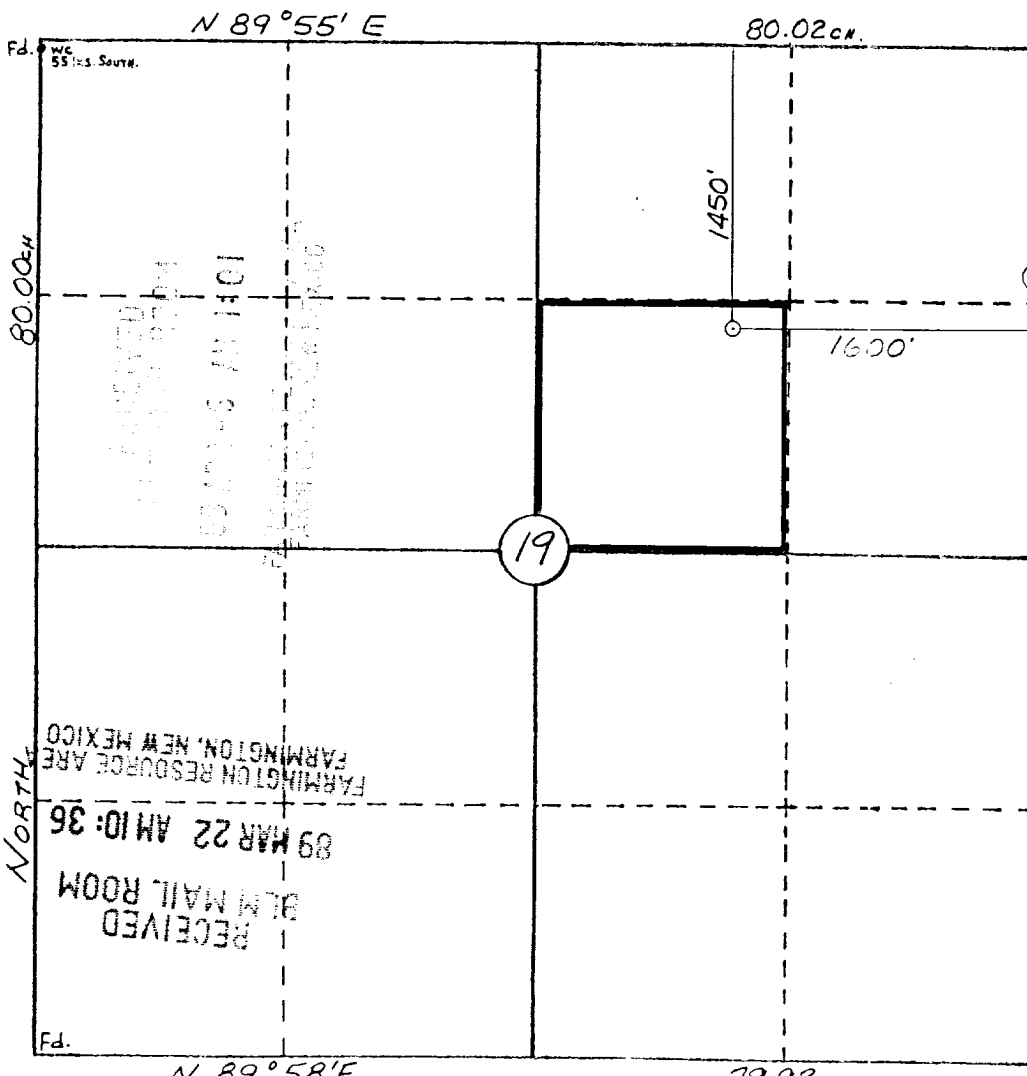
Operator TIFFANY GAS COMPANY			Lease USG Section 19		Well No. 50
Unit Letter G	Section 19	Township 29 N	Range 16 W	County San Juan	
Actual Footage Location of Wells 1450 feet from the North line and 1600 feet from the East line					
Ground Level Elev. 5000	Producing Formation DAKOTA	Pool HOGBACK DAKOTA		Dedicated Acreage 40 <i>JT w/13,15</i> Acres	

1. Outline the acreage dedicated to the subject well by colored pencil or hatchure marks on the plat below.
2. If more than one lease is dedicated to the well, outline each and identify the ownership thereof (both as to working interest and royalty).
3. If more than one lease of different ownership is dedicated to the well, have the interests of all owners been consolidated by communitization, unitization, force-pooling, etc?

☐ Yes ☐ No If answer is "yes," type of consolidation _____

If answer is "no," list the owners and tract descriptions which have actually been consolidated. (Use reverse side of this form if necessary.) _____

No allowable will be assigned to the well until all interests have been consolidated (by communitization, unitization, forced-pooling, or otherwise) or until a non-standard unit, eliminating such interests, has been approved by the Commission.



CERTIFICATION

I hereby certify that the information contained herein is true and complete to the best of my knowledge and belief.

Name
JIM HICKS
Position
AGENT
Company
TIFFANY GAS COMPANY
Date
03/21/89

I hereby certify that the well location shown on this plat was plotted from field notes of actual surveys made by me or under my supervision, and that the same is true and correct to the best of my knowledge and belief.

Date Surveyed
WILLIAM E. MAHAR
WILLIAM E. MAHAR II
Registered Professional Engineer and Land Surveyor

Certificate No.
8466

