

Submit to Appropriate
District Office
State Lease - 4 copies
Fee Lease - 3 copies

State of New Mexico
Energy, Minerals and Natural Resources Department

OIL CONSERVATION DIVISION

P.O. Box 2088
Santa Fe, New Mexico 87504-2088

DISTRICT I
P.O. Box 1980, Hobbs, NM 88240

DISTRICT II
P.O. Drawer DD, Artesia, NM 88210

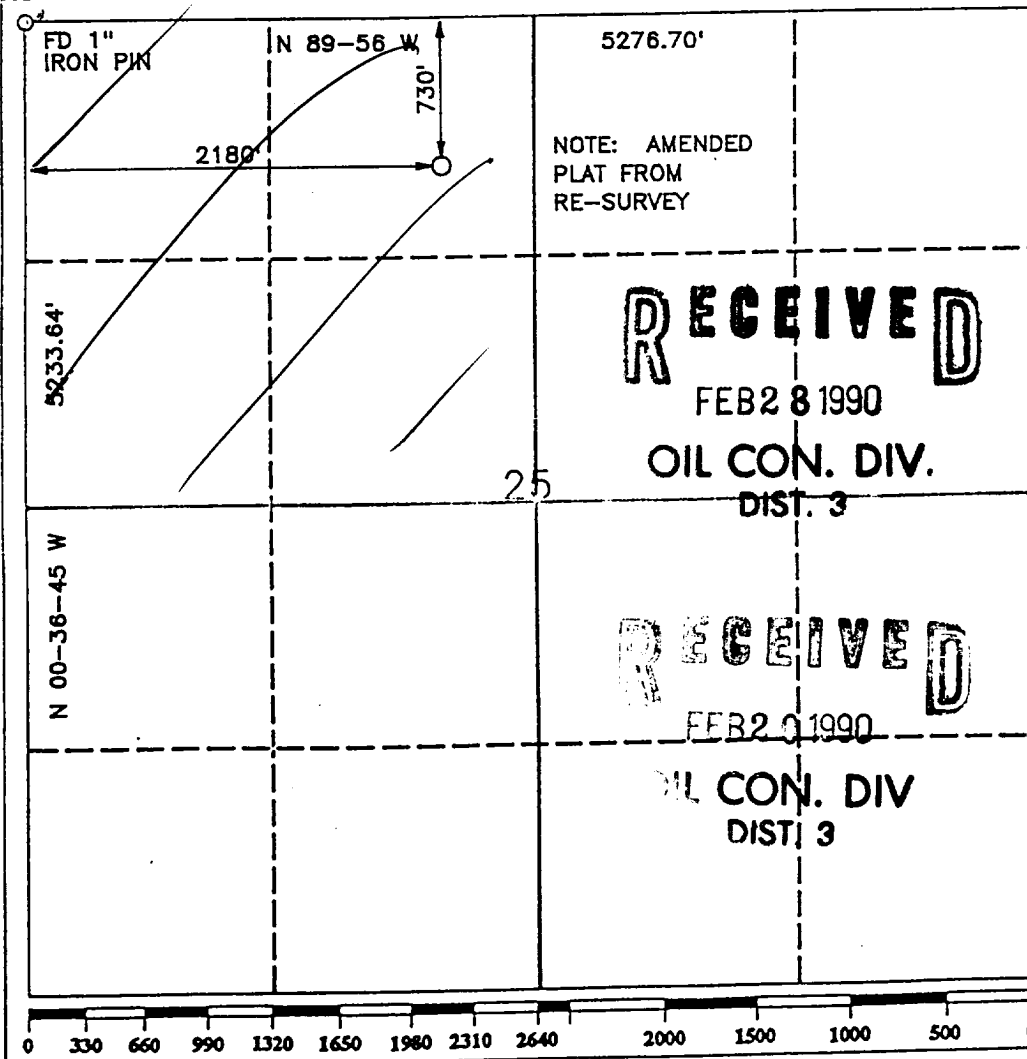
DISTRICT III
1000 Rio Brazos Rd., Aztec, NM 87410

WELL LOCATION AND ACREAGE DEDICATION PLAT

All Distances must be from the outer boundaries of the section

Operator BANNON ENERGY INC.			Lease <i>Sullivan</i> J.B.		Well No. NO. 1
Unit Letter C	Section 25	Township T.29 N.	Range R.11 W.	County SAN JUAN	
Actual Footage Location of Well: 730 feet from the NORTH line and 2180 feet from the WEST line					
Ground level Elev. 5487	Producing Formation Fruitland Sand		Pool Aztec Fruitland Sand		Dedicated Acreage: 160 Acres

- Outline the acreage dedicated to the subject well by colored pencil or hatchure marks on the plat below.
- If more than one lease is dedicated to the well, outline each and identify the ownership thereof (both as to working interest and royalty).
- If more than one lease of different ownership is dedicated to the well, have the interest of all owners been consolidated by communitization, unitization, force-pooling, etc.?
☐ Yes ☐ No If answer is "yes" type of consolidation _____
If answer is "no" list the owners and tract descriptions which have actually been consolidated. (Use reverse side of this form if necessary.)
No allowable will be assigned to the well until all interests have been consolidated (by communitization, unitization, forced-pooling, or otherwise) or until a non-standard unit, eliminating such interest, has been approved by the Division.



OPERATOR CERTIFICATION

I hereby certify that the information contained herein is true and complete to the best of my knowledge and belief.

Signature *W.J. Holcomb*

Printed Name
W.J. Holcomb

Position
Agent

Company
Bannon Energy, Inc.

Date
2-27-90

SURVEYOR CERTIFICATION

I hereby certify that the well location shown on this plat was plotted from field notes of actual surveys made by me or under my supervision, and that the same is true and correct to the best of my knowledge and belief.

Date Surveyed **FEB 26, 1990**
Signature and Seal of Professional Surveyor
R. Howard Daggett
R. HOWARD DAGGETT
PROFESSIONAL SURVEYOR

Registered Professional
Certificate No. **9679**
Land Surveyor