

UNITED STATES
DEPARTMENT OF THE INTERIOR
BUREAU OF LAND MANAGEMENT

APPLICATION FOR PERMIT TO DRILL, DEEPEN, OR PLUG BACK

1a. TYPE OF WORK

DRILL ☒

DEEPEN ☐ PLUG BACK ☐

b. TYPE OF WELL

OIL WELL ☐

GAS WELL ☒

Coal Seam

OTHER

SINGLE ZONE ☒

MULTIPLE ZONE ☐

2. NAME OF OPERATOR

Amoco Production Company

3. ADDRESS OF OPERATOR

2325 East 30th Street, Farmington NM 87401

4. LOCATION OF WELL (Report location clearly and in accordance with any State requirements.)*

At surface 2250' FNL x 910' FEL

At proposed prod. zone

Same

14. DISTANCE IN MILES AND DIRECTION FROM NEAREST TOWN OR POST OFFICE*

28 miles northeast of Aztec NM

15. DISTANCE FROM PROPOSED*

LOCATION TO NEAREST PROPERTY OR LEASE LINE, FT.
(Also to nearest drlg. unit line, if any) 910'

18. DISTANCE FROM PROPOSED LOCATION* TO NEAREST WELL, DRILLING, COMPLETED, OR APPLIED FOR, ON THIS LEASE, FT.

16. NO. OF ACRES IN LEASE

688.73 ac.

19. PROPOSED DEPTH
See attached plan 3441'

17. NO. OF ACRES ASSIGNED TO THIS WELL

320 E/2

20. ROTARY OR CABLE TOOLS

Rotary

21. ELEVATIONS (Show whether DF, RT, GR, etc.)

6273' GR

DRILLING OPERATIONS AUTHORIZED ARE
SUBJECT TO COMPLIANCE WITH ATTACHED

22. APPROX. DATE WORK WILL START*

As soon as permitted

23. PROPOSED CASING AND CEMENTING PROGRAM

procedural review pursuant to 43 CFR 3105.3
and special provisions of 43 CFR 3105.4.

SIZE OF HOLE	SIZE OF CASING	WEIGHT PER FOOT	SETTING DEPTH	QUANTITY OF CEMENT
12-1/4"	9-5/8"	36# K55	250'	200 cf Class B
8-3/4"	7"	20# K55	2984'	838 cf Class B
6-1/4"	5-1/2"	23# P110	3181'	

Notice of Staking submitted 04/06/89.

This well was formerly named Florance 36 (Dak/MV) 36A, 36E, 137 (FT) #3

Lease description:

T30N-R8W, NMPM

Sec. 3: Lots 1,2, S/2 NE/4, SE/4

Sec. 9: NE/4 SE/4, E/2 NE/4

Sec. 10: Lot 3, NW/4, NW/4 SW/4

RECEIVED

DEC1 4 1989

OIL CON. DIV
DIST. 3

IN ABOVE SPACE DESCRIBE PROPOSED PROGRAM: If proposal is to deepen or plug back, give data on present productive zone and proposed new productive zone. If proposal is to drill or deepen directionally, give pertinent data on subsurface locations and measured and true vertical depths. Give blowout preventer program, if any.

24.

SIGNED

J. L. Hampton

TITLE Admin. Supv.

DATE 5/3/89

(This space for Federal or State office use)

PERMIT NO.

APPROVAL DATE

APPROVED BY

CONDITIONS OF APPROVAL, IF ANY:

TITLE

*Had C-104 until Florance-
36A is changed to R1
NMOC*

*See Instructions On Reverse Side

APPROVED

DEC 08 1989

AREA MANAGER

Submit to Appropriate
District Office
State Lease - 4 copies
Fee Lease - 3 copies

State of New Mexico
Energy, Minerals and Natural Resources Department

Form C-102
Revised 1-1-89

OIL CONSERVATION DIVISION

P.O. Box 2088
Santa Fe, New Mexico 87504-2088

DISTRICT I
P.O. Box 1980, Hobbs, NM 88240

DISTRICT II
P.O. Drawer DD, Artesia, NM 88210

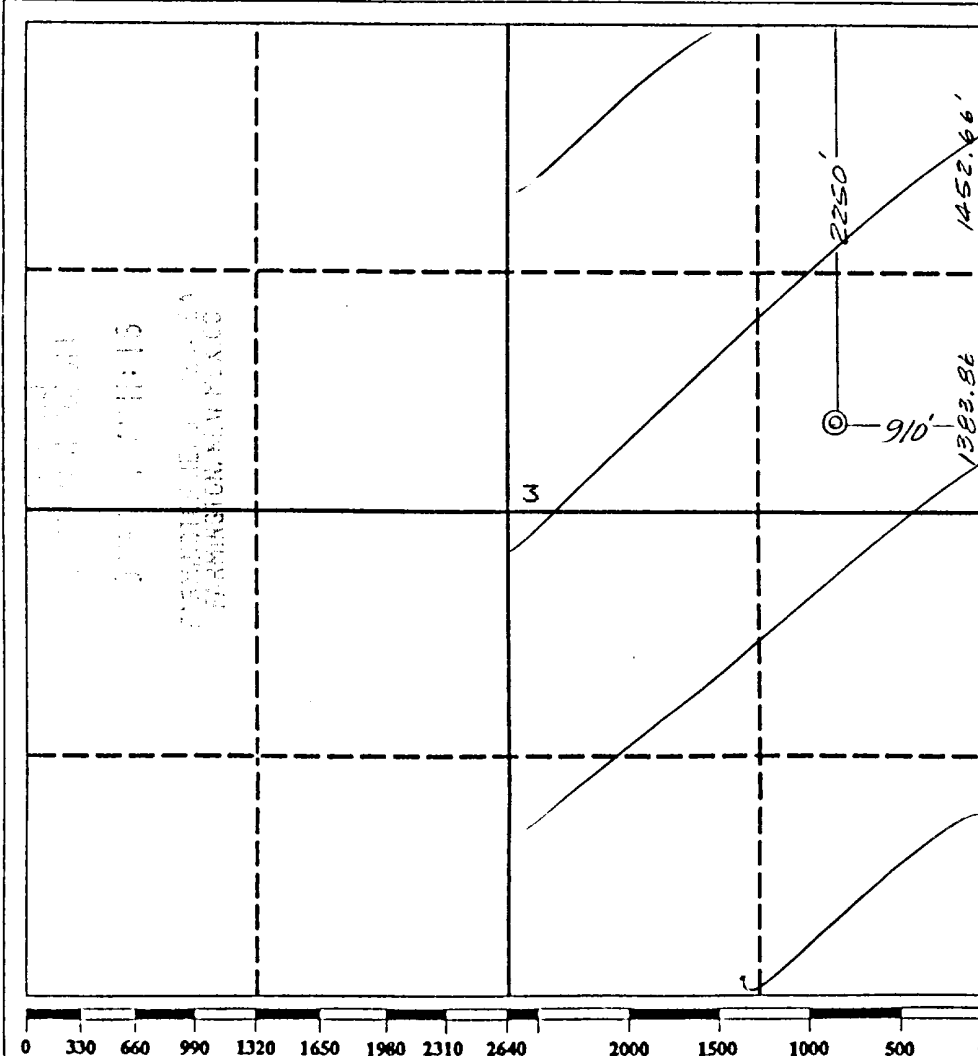
DISTRICT III
1000 Rio Brazos Rd., Aztec, NM 87410

WELL LOCATION AND ACREAGE DEDICATION PLAT

All Distances must be from the outer boundaries of the section

Operator AMOCO PRODUCTION COMPANY			Lease Florence G		Well No. # 3
Unit Letter H	Section 3	Township 30 NORTH	Range B WEST	County SAN JUAN	
Actual Footage Location of Well: 2250 feet from the NORTH line and 910 feet from the EAST line					
Ground level Elev. 6273	Producing Formation Fruitland	Pool Basin Fruitland Coal Gas			Dedicated Acreage: 320 E/2 Acres

1. Outline the acreage dedicated to the subject well by colored pencil or hatchure marks on the plat below.
2. If more than one lease is dedicated to the well, outline each and identify the ownership thereof (both as to working interest and royalty).
3. If more than one lease of different ownership is dedicated to the well, have the interest of all owners been consolidated by communitization, unitization, force-pooling, etc.?
☐ Yes ☐ No If answer is "yes" type of consolidation _____
If answer is "no" list the owners and tract descriptions which have actually been consolidated. (Use reverse side of this form if necessary.)
No allowable will be assigned to the well until all interests have been consolidated (by communitization, unitization, forced-pooling, or otherwise) or until a non-standard unit, eliminating such interest, has been approved by the Division.



OPERATOR CERTIFICATION

I hereby certify that the information contained herein is true and complete to the best of my knowledge and belief.

Signature
C. B. Douglas
Printed Name
C. B. Douglas
Position
Dist. Admin. Supv.
Company
Amoco Production
Date
April 6, 1989

SURVEYOR CERTIFICATION

I hereby certify that the well location shown on this plat was plotted from field notes of actual surveys made by me or under my supervision, and that the same is true and correct to the best of my knowledge and belief.

Date Surveyed
April 4, 1989

Signature & Seal of Professional Surveyor
GARY D. VANN
7016
7016

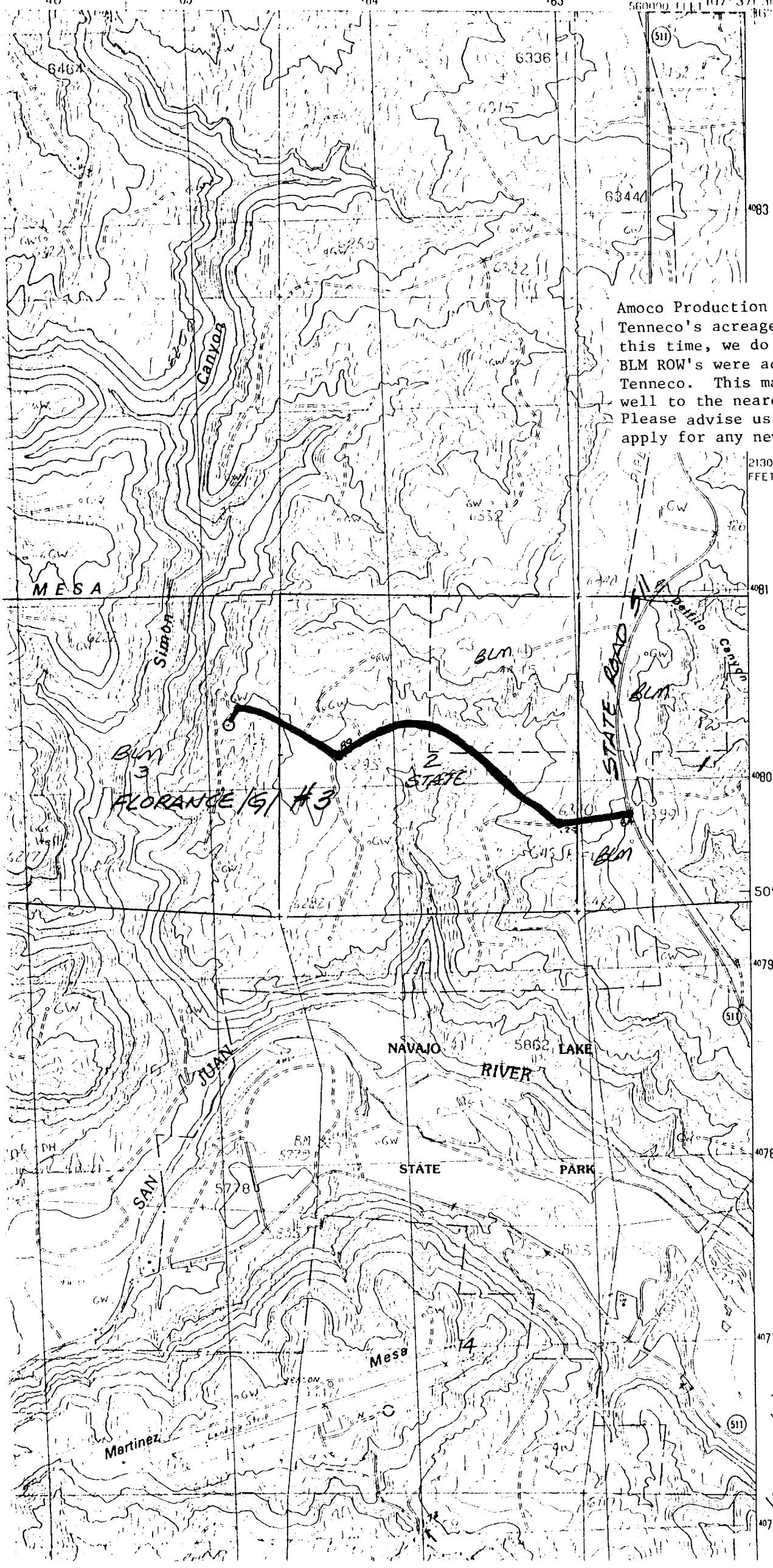


EXHIBIT B

Amoco Production acquired Tenneco's acreage 12/9/88. At this time, we do not know which BLM ROW's were acquired by Tenneco. This map shows the well to the nearest county road. Please advise us if we need to apply for any new road ROW's.

2130 000
FEET

T31N RBW
T30N RBW

(PINE RIVER)