

UNITED STATES
DEPARTMENT OF THE INTERIOR
BUREAU OF LAND MANAGEMENT

APPLICATION FOR PERMIT TO DRILL, DEEPEN, OR PLUG BACK

1a. TYPE OF WORK

DRILL ☒

DEEPEN ☐

PLUG BACK ☐

b. TYPE OF WELL

OIL
WELL ☐

GAS
WELL ☒

OTHER

SINGLE
ZONE ☒

MULTIPLE
ZONE ☐

2. NAME OF OPERATOR

MESA OPERATING LIMITED PARTNERSHIP

3. ADDRESS OF OPERATOR

P.O. BOX 2009, AMARILLO, TEXAS 79189

4. LOCATION OF WELL (Report location clearly and in accordance with any State and Federal requirements)

At surface

1430' FNL/1710' FEL

At proposed prod. zone

965'N 1150'E

14. DISTANCE IN MILES AND DIRECTION FROM NEAREST TOWN OR POST OFFICE*

4 miles NE from Bloomfield, New Mexico

15. DISTANCE FROM PROPOSED*

LOCATION TO NEAREST
PROPERTY OR LEASE LINE, FT.
(Also to nearest drlg. unit line, if any)

1175'

16. NO. OF ACRES IN LEASE

305.6

17. NO. OF ACRES ASSIGNED
TO THIS WELL

E/2 305.06

18. DISTANCE FROM PROPOSED LOCATION*

TO NEAREST WELL, DRILLING, COMPLETED,
OR APPLIED FOR, ON THIS LEASE, FT.

125'

19. PROPOSED DEPTH

2350'

20. ROTARY OR CABLE TOOLS

Rotary

21. ELEVATIONS (Show whether DF, RT, GR, etc.)

5859' This action is subject to technical and

23. 5876 procedural review pursuant to 43 CFR 3165.3
and appeal pursuant to 43 CFR 3165.4. PROPOSED CASING AND CEMENTING PROGRAM

22. APPROX. DATE WORK WILL START*

SIZE OF HOLE	SIZE OF CASING	WEIGHT PER FOOT	SETTING DEPTH	QUANTITY OF CEMENT
12 1/4"	8 5/8"	24#	200'	150 sx "B" + 2% CaCl (Surface)
7 7/8"	5 1/2"	17#	2350'	250 Poz/250 "B" (Surface)

Propose to spud well with 12 1/4" hole and drill to 200' and set 8 5/8" surface casing. Will cement with 150 sx of Class "B" and raise cement to surface. Will nipple up 3000 psi BOP assembly and drill 7 7/8" hole to TD of \pm 2350' with fresh water mud system. Will then log well and evaluate for possible commercial production. If successful, will then run 5 1/2" casing to \pm 2350' and cement with 250 sx Pozmix followed by 250 sx Class "B" cement. Will move off drilling rig and move in completion unit.

xc: BLM-Farmington (0+5), NMOCD-Aztec (1), WF, Reg, Expl., Land, Drilling

IN ABOVE SPACE DESCRIBE PROPOSED PROGRAM: If proposal is to deepen or plug back, give data on present productive zone and proposed new productive zone. If proposal is to drill or deepen directionally, give pertinent data on subsurface locations and measured and true vertical depths. Give blowout preventer program, if any.

24.

SIGNED

R. E. Machis

TITLE

Regulatory Agent

DATE 9/5/89

(This space for Federal or State office use)

APPROVED
AS AMENDED

PERMIT NO.

APPROVAL DATE

APPROVED BY

TITLE

CONDITIONS OF APPROVAL, IF ANY:

DATE 9/21/89
AREA MANAGER

NMOCD

*See Instructions On Reverse Side

DISTRICT I
P.O. Box 1980, Hobbs, NM 88240

OIL CONSERVATION DIVISION

P.O. Box 2088

Santa Fe, New Mexico 87504-2088

DISTRICT II
P.O. Drawer DD, Artesia, NM 88210

DISTRICT III
1000 Rio Brazos Rd., Aztec, NM 87410

WELL LOCATION AND ACREAGE DEDICATION PLAT

All Distances must be from the outer boundaries of the section

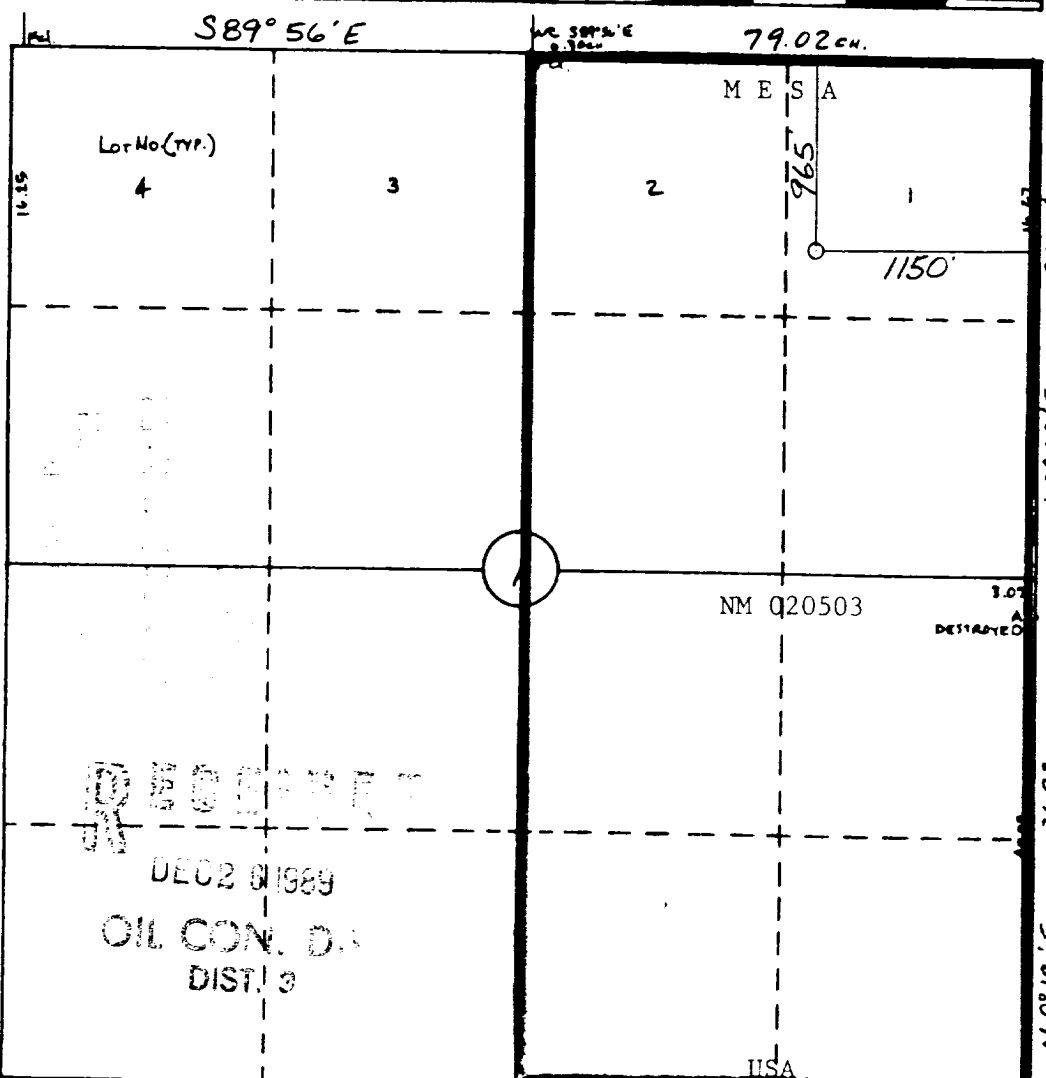
Operator MESA OPERATING LIMITED PARTNERSHIP			Lease FC FEDERAL		Well No. 6
Unit Letter A	Section 1	Township 29 N	Range 11 W	County San Juan	
Actual Footage Location of Well: 965 feet from the North line and 1150 feet from the East line					
Ground level Elev. 5876	Producing Formation Fruitland Coal	Pool Basin Fruitland Coal		Dedicated Acreage: E/2 305.06 Acres	

1. Outline the acreage dedicated to the subject well by colored pencil or hatchure marks on the plat below.
2. If more than one lease is dedicated to the well, outline each and identify the ownership thereof (both as to working interest and royalty).
3. If more than one lease of different ownership is dedicated to the well, have the interest of all owners been consolidated by communitization, unitization, force-pooling, etc.?
☐ Yes ☐ No If answer is "yes" type of consolidation _____

If answer is "no" list the owners and tract descriptions which have actually been consolidated. (Use reverse side of this form if necessary.)

No allowable will be assigned to the well until all interests have been consolidated (by communitization, unitization, forced-pooling, or otherwise) or until a non-standard unit, eliminating such interest, has been approved by the Division.

0 330 660 990 1320 1650 1980 2310 2640 2970 3300 3630 3960 4290 4620 4950 5280 5610 5940 6270 6600 6930 7260 7590 7920 8250 8580 8910 9240 9570 9900 0



OPERATOR CERTIFICATION

I hereby certify that the information contained herein is true and complete to the best of my knowledge and belief.

Signature

Printed Name

Carolyn L. McKee

Position

Regulatory Analyst

Company

Mesa Ltd Partnership

Date

10/23/89

SURVEYOR CERTIFICATION

I hereby certify that the well location shown on this plat was plotted from field notes of actual surveys made by me or under my supervision, and that the same is true and correct to the best of my knowledge and belief.

10-19-89

Date Surveyed

William E. Mankie II

Signature of Surveyor

Professional Surveyor

NEW MEXICO

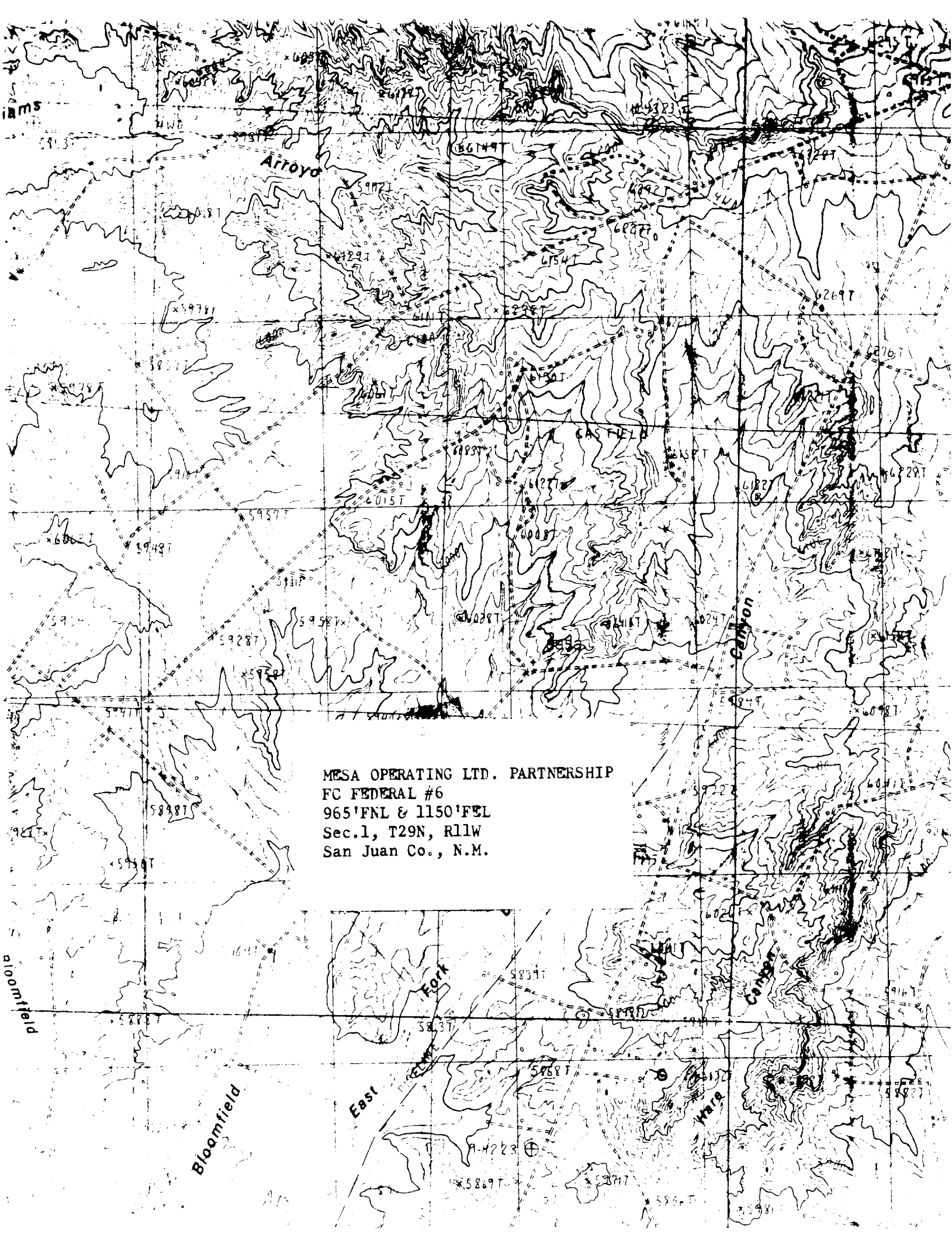
#8466

REGISTERED

CERTIFICATE

PROFESSIONAL LAND SURVEYOR

1988



MESA OPERATING LTD. PARTNERSHIP
FC FEDERAL #6
965'FNL & 1150'FEL
Sec.1, T29N, R11W
San Juan Co., N.M.