

UNITED STATES
DEPARTMENT OF THE INTERIOR
BUREAU OF LAND MANAGEMENT

APPLICATION FOR PERMIT TO DRILL, DEEPEN, OR PLUG BACK

1a. TYPE OF WORK

DRILL ☒

DEEPEN ☐

PLUG BACK ☐

b. TYPE OF WELL

OIL
WELL ☐

GAS
WELL ☒

OTHER

SINGLE
ZONE ☒

MULTIPLE
ZONE ☐

2. NAME OF OPERATOR

BHP Petroleum (Americas) Inc.

3. ADDRESS OF OPERATOR

1560 Broadway, Suite 1900, Denver, CO 80202

4. LOCATION OF WELL (Report location clearly and in accordance with any State requirements.)

At surface

SWSW, 1070' FSL, 1055' FWL
At proposed prod. zone

14. DISTANCE IN MILES AND DIRECTION FROM NEAREST TOWN OR POST OFFICE*

Approximately 5 miles southeast of Farmington, NM

15. DISTANCE FROM PROPOSED*

LOCATION TO NEAREST
PROPERTY OR LEASE LINE, FT.
(Also to nearest drlg. unit line, if any) unit boundary

Approx. 5200' from

16. NO. OF ACRES IN LEASE

2,561.19

18. DISTANCE FROM PROPOSED LOCATION*

TO NEAREST WELL, DRILLING, COMPLETED,
OR APPLIED FOR, ON THIS LEASE, FT.

150'

19. PROPOSED DEPTH

1,600'

17. NO. OF ACRES ASSIGNED
TO THIS WELL

320W/322.46

20. ROTARY OR CABLE TOOLS

Rotary

21. ELEVATIONS (Show whether DF, RT, GR, etc.)

5433' GR

22. APPROX. DATE WORK WILL START*

As soon as approved

23. PROPOSED CASING AND CEMENTING PROGRAM

This action is subject to Bureau and
procedural review pursuant to 43 CFR 3165.3
and appeal pursuant to 43 CFR 3165.4.

SIZE OF HOLE	SIZE OF CASING	WEIGHT PER FOOT	SETTING DEPTH	QUANTITY OF CEMENT
8-3/4"	7"	20#	120'	35 SX
6-1/4"	4 1/2"	9.5#	1600'	145 SX

RECEIVED

JAN 12 1990

OIL CON. DIV.
DIST. 3

IN ABOVE SPACE DESCRIBE PROPOSED PROGRAM: If proposal is to deepen or plug back, give data on present productive zone and proposed new productive zone. If proposal is to drill or deepen directionally, give pertinent data on subsurface locations and measured and true vertical depths. Give blowout-preventer program, if any.

24.

SIGNED

Chuck Williams

TITLE Field Services Administrator DATE 10/30/89

(This space for Federal or State office use)

PERMIT NO.

APPROVAL DATE

APPROVED
AS AMENDED

APPROVED BY

TITLE

CONDITIONS OF APPROVAL, IF ANY:

OK

NMOCD

*See Instructions On Reverse Side

JAN 18 1990

AREA MANAGER

Submit to Appropriate
District Office
State Lease - 4 copies
Fee Lease - 3 copies

State of New Mexico
Energy, Minerals and Natural Resources Department

Form C-102
Revised 1-1-89

OIL CONSERVATION DIVISION

P.O. Box 2088

Santa Fe, New Mexico 87504-2088

DISTRICT I

P.O. Box 1980, Hobbs, NM 88240

DISTRICT II

P.O. Drawer DD, Artesia, NM 88210

DISTRICT III

1000 Rio Brazos Rd., Aztec, NM 87410

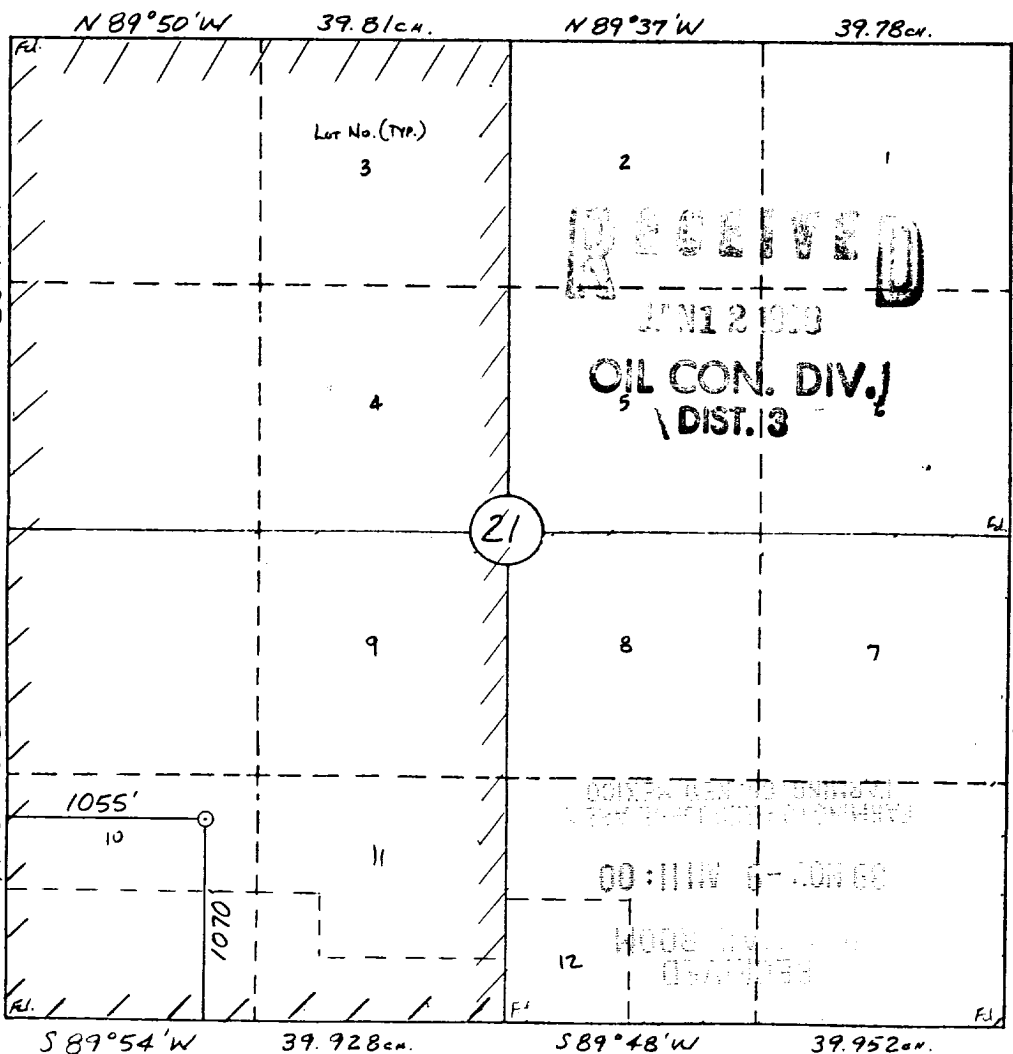
WELL LOCATION AND ACREAGE DEDICATION PLAT

All Distances must be from the outer boundaries of the section

Operator BHP PETROLEUM (AMERICAS) INC.			Lease GALLEGOS CANYON UNIT		Well No. 384
Unit Letter M	Section 21	Township 29 N	Range 12 W	County San Juan	
Actual Footage Location of Well: 1070 feet from the South line and 1055 feet from the West line					
Ground level Elev. 5433	Producing Formation Fruitland Coal		Pool Basin Fruitland Coal		Dedicated Acreage: 320.46 Acres

1. Outline the acreage dedicated to the subject well by colored pencil or hatchure marks on the plat below.
2. If more than one lease is dedicated to the well, outline each and identify the ownership thereof (both as to working interest and royalty).
3. If more than one lease of different ownership is dedicated to the well, have the interest of all owners been consolidated by communitization, unitization, force-pooling, etc.?
☐ Yes ☐ No If answer is "yes" type of consolidation _____
If answer is "no" list the owners and tract descriptions which have actually been consolidated. (Use reverse side of this form if necessary.) _____
No allowable will be assigned to the well until all interests have been consolidated (by communitization, unitization, forced-pooling, or otherwise) or until a non-standard unit, eliminating such interest, has been approved by the Division.

0 330 660 990 1320 1650 1980 2310 2640 2000 1500 1000 500 0



OPERATOR CERTIFICATION

I hereby certify that the information contained herein is true and complete to the best of my knowledge and belief.

Signature
Chuck Williams

Printed Name
Chuck Williams

Position
Field Services Administrator

Company
BHP Petroleum (Americas) Inc.

Date
October 5, 1989

SURVEYOR CERTIFICATION

I hereby certify that the well location shown on this plat was plotted from field notes of actual surveys made by me or under my supervision, and that the same is true and correct to the best of my knowledge and belief.

9-19-89

Date Surveyed
William E. Mink II

Signature of Professional Surveyor

Professional Land Surveyor
#8466

Certificate No.

BHP PETROLEUM (AMERICAS) INC.
#384 GALLEGOS CANYON UNIT
1070' FSL & 1055' FWL
Sec. 21, T29N, R12W
San Juan Co., N.M.

RIVER