

UNITED STATES  
DEPARTMENT OF THE INTERIOR  
BUREAU OF LAND MANAGEMENT

APPLICATION FOR PERMIT TO DRILL, DEEPEN, OR PLUG BACK

1a. TYPE OF WORK

DRILL ☒

DEEPEN ☐

PLUG BACK ☐

b. TYPE OF WELL

OIL  
WELL ☐

GAS  
WELL ☒

OTHER

SINGLE  
ZONE ☒

MULTIPLE  
ZONE ☐

2. NAME OF OPERATOR

BHP Petroleum (Americas) Inc.

3. ADDRESS OF OPERATOR

1560 Broadway, Suite 1900, Denver, CO 80202

4. LOCATION OF WELL (Report location clearly and in accordance with any State requirements.)\*

At surface

SENE 1650' FNL, 985' FEL

At proposed prod. zone

14. DISTANCE IN MILES AND DIRECTION FROM NEAREST TOWN OR POST OFFICE\*

Approximately 5 miles southeast of Farmington, NM

15. DISTANCE FROM PROPOSED\*

LOCATION TO NEAREST  
PROPERTY OR LEASE LINE, FT.  
(Also to nearest drig. unit line, if any) unit boundary

Approx. 4,500' from

16. NO. OF ACRES IN LEASE

2,561.19

18. DISTANCE FROM PROPOSED LOCATION\*

TO NEAREST WELL, DRILLING, COMPLETED,  
OR APPLIED FOR, ON THIS LEASE, FT.

160'

19. PROPOSED DEPTH

1,712'

17. NO. OF ACRES ASSIGNED  
TO THIS WELL

*1/320 3/3.18*

20. ROTARY OR CABLE TOOLS

Rotary

21. ELEVATIONS (Show whether DF, RT, GR, etc.)

5614' GR

DEVELOPMENT OPERATIONS APPROVED ARE  
SUBJECT TO COMPLIANCE WITH ATTACHED

22. APPROX. DATE WORK WILL START\*

This entry is subject to approval  
procedural review pursuant to 43 CFR 3155.3  
and appeal pursuant to 43 CFR 3155.4,  
QUANTITY OF CEMENT

23. PROPOSED CASING AND CEMENTING PROGRAM

SIZE OF HOLE	SIZE OF CASING	WEIGHT PER FOOT	SETTING DEPTH	QUANTITY OF CEMENT
8-3/4"	7"	20#	120'	35 sx
6-1/4"	4 1/2"	9.5#	1712'	150 sx

*190 SX*

RECEIVED

FEB 07 1990

OIL CON. DIV./  
DIST. 3

IN ABOVE SPACE DESCRIBE PROPOSED PROGRAM: If proposal is to deepen or plug back, give data on present productive zone and proposed new productive zone. If proposal is to drill or deepen directionally, give pertinent data on subsurface locations and measured and true vertical depths. Give blowout-preventer program, if any.

24.

SIGNED

*Chuck Williams*  
Chuck Williams

TITLE Field Services Administrator DATE 10/30/89

(This space for Federal or State office use)

PERMIT NO.

APPROVAL DATE

APPROVED  
AS AMENDED

APPROVED BY

TITLE

CONDITIONS OF APPROVAL, IF ANY:

*OK*  
*Q*

NMOCD

\*See Instructions On Reverse Side

DATE  
FEB 02 1990

Ken Townsend

FOR AREA MANAGER

Submit to Appropriate  
District Office  
State Lease - 4 copies  
Fee Lease - 3 copies

DISTRICT I  
P.O. Box 1980, Hobbs, NM 88240

DISTRICT II  
P.O. Drawer DD, Artesia, NM 88210

DISTRICT III  
1000 Rio Brazos Rd., Aztec, NM 87410

State of New Mexico  
Energy, Minerals and Natural Resources Department

OIL CONSERVATION DIVISION

P.O. Box 2088  
Santa Fe, New Mexico 87504-2088

RECEIVED

FEB 07 1990

OIL CON. DIV.  
DIST. 3

WELL LOCATION AND ACREAGE DEDICATION PLAT

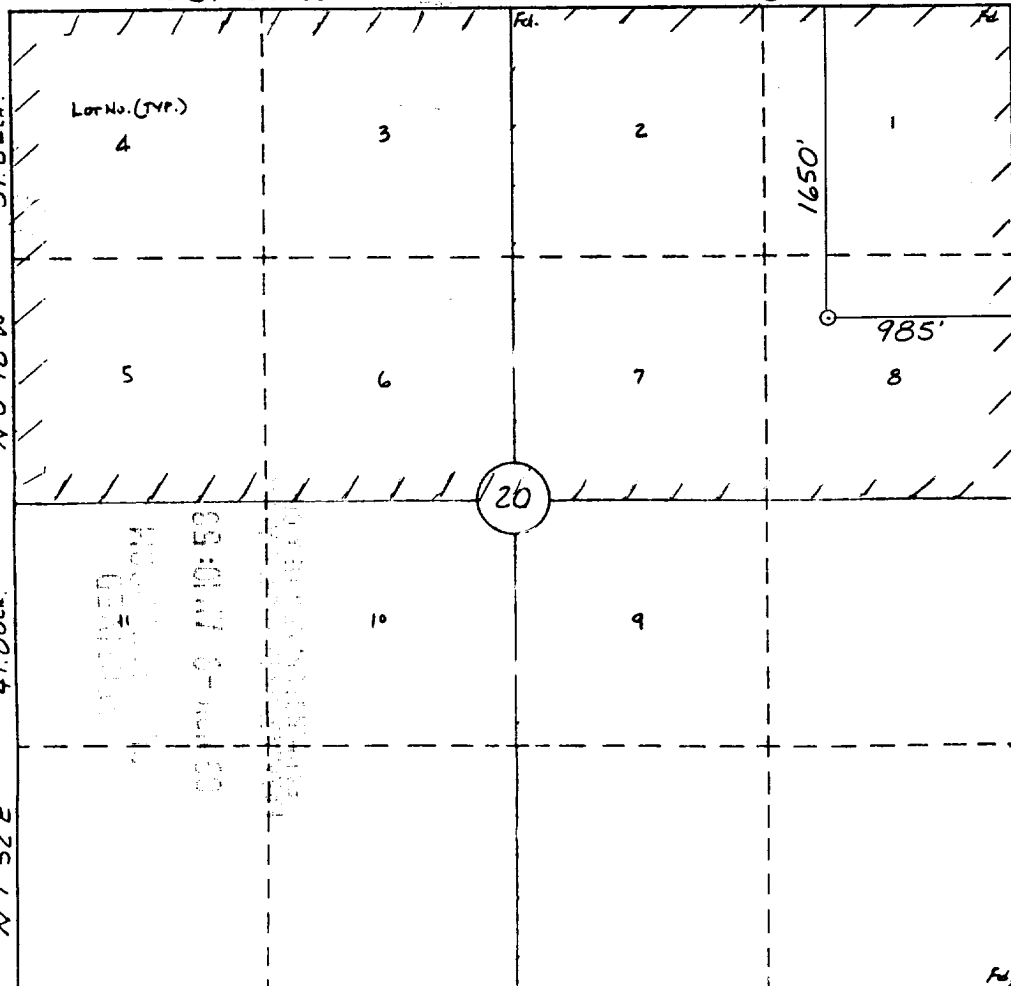
All Distances must be from the outer boundaries of the section

Operator BHP PETROLEUM (AMERICAS) INC.		Lease GALLEGOS CANYON UNIT		Well No. 381
Unit Letter H	Section 20	Township 29 N	Range 12 W	County San Juan
Actual Footage Location of Well: 1650 feet from the North line and 985 feet from the East line				
Ground level Elev. 5614	Producing Formation Fruitland Coal		Pool Basin Fruitland Coal	Dedicated Acreage: 320 3/318
<p>1. Outline the acreage dedicated to the subject well by colored pencil or hatchure marks on the plat below.</p> <p>2. If more than one lease is dedicated to the well, outline each and identify the ownership thereof (both as to working interest and royalty).</p> <p>3. If more than one lease of different ownership is dedicated to the well, have the interest of all owners been consolidated by communitization, unitization, force-pooling, etc.?</p> <p><input type="checkbox"/> Yes <input type="checkbox"/> No If answer is "yes" type of consolidation _____</p> <p>If answer is "no" list the owners and tract descriptions which have actually been consolidated. (Use reverse side of this form if necessary.) _____</p> <p>No allowable will be assigned to the well until all interests have been consolidated (by communitization, unitization, forced-pooling, or otherwise) or until a non-standard unit, eliminating such interest, has been approved by the Division.</p>				

0 330 660 990 1320 1650 1980 2310 2640 2000 1500 1000 500 0

S 89° 54' W

78.38 ch.



OPERATOR CERTIFICATION

I hereby certify that the information contained herein is true and complete to the best of my knowledge and belief.

Signature  
Chuck Williams  
Printed Name  
Chuck Williams  
Position  
Administrator, Field Services  
Company  
BHP PETROLEUM (AMERICAS) INC.  
Date  
September 8, 1989

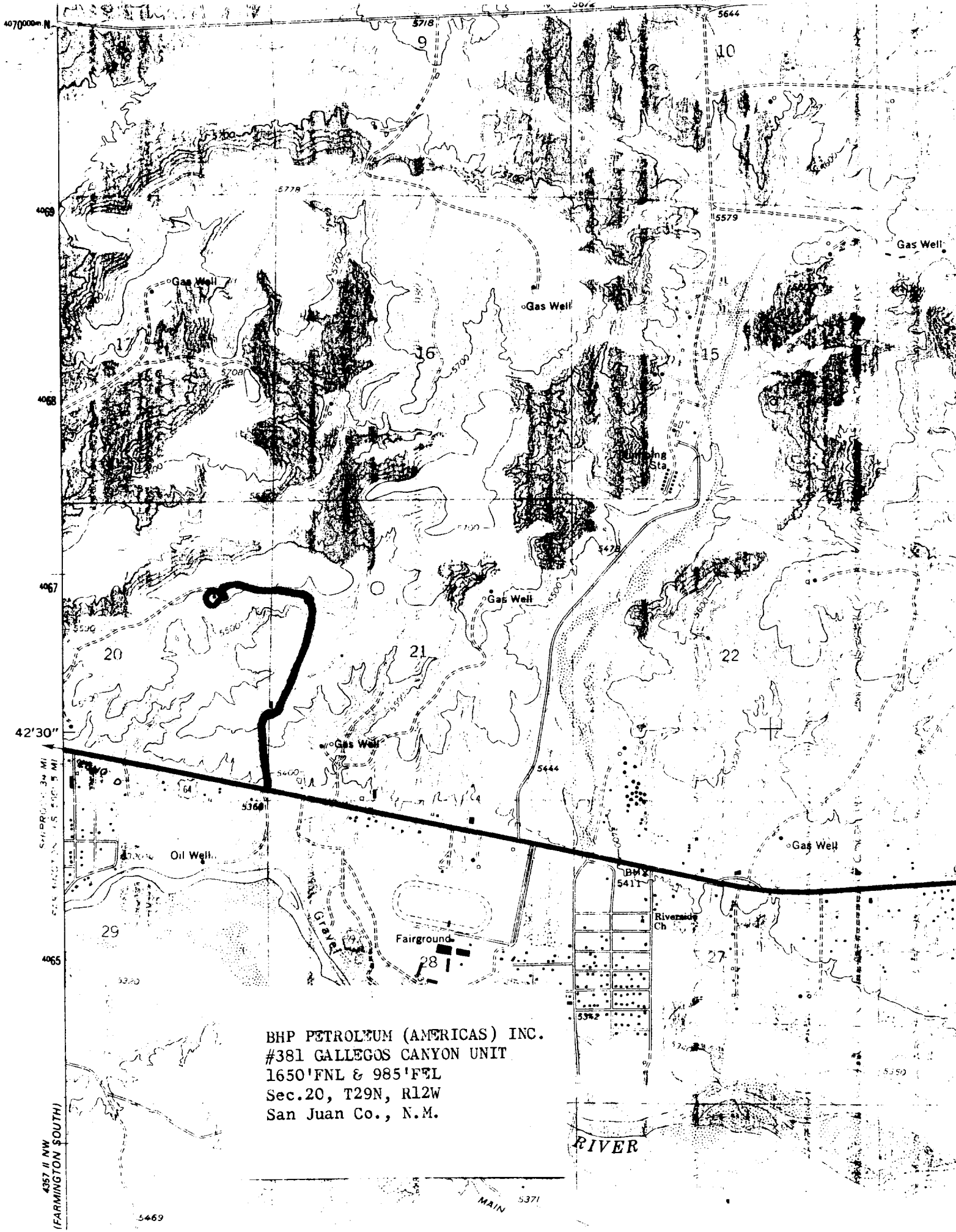
SURVEYOR CERTIFICATION

I hereby certify that the well location shown on this plat was plotted from field notes of actual surveys made by me or under my supervision, and that the same is true and correct to the best of my knowledge and belief.

8-21-89

Date Surveyed  
William E. Mahake II  
Signature & Seal of  
Professional Surveyor

NEW MEXICO  
#8466  
REGISTERED PROFESSIONAL LAND SURVEYOR  
Certificate No. 8466



BHP PETROLEUM (AMERICAS) INC.  
#381 GALLEGOS CANYON UNIT  
1650'FNL & 985'FEL  
Sec.20, T29N, R12W  
San Juan Co., N.M.