

Submit to Appropriate
District Office
State Lease - 6 copies
Fee Lease - 5 copies

State of New Mexico
Energy, Minerals and Natural Resources Department

Form C-101
Revised 1-1-89

OIL CONSERVATION DIVISION

DISTRICT I
P.O. Box 1980, Hobbs, NM 88240

DISTRICT II
P.O. Drawer DD, Artesia, NM 88210

DISTRICT III
1000 Rio Brazos Rd., Aztec, NM 87410

Santa Fe, New Mexico 87504-2088

APR 25 1990

OIL CON. DIV.
DIST. 3

API NO. (assigned by OCD on New Wells)

5. Indicate Type of Lease

STATE ☒ FEE ☐

6. State Oil & Gas Lease No.

E-9229-2

APPLICATION FOR PERMIT TO DRILL, DEEPEN, OR PLUG BACK

1a. Type of Work:

DRILL ☒ RE-ENTER ☐ DEEPEN ☐ PLUG BACK ☐

b. Type of Well:

OIL WELL ☐ GAS WELL ☒ OTHER ☐ SINGLE ZONE ☒ MULTIPLE ZONE ☐

2. Name of Operator

Union Texas Petroleum

3. Address of Operator

375 U.S. Highway 64

7. Lease Name or Unit Agreement Name

New Mexico A Com

8. Well No.

2

9. Pool name or Wildcat

Basin Fruitland Coal

4. Well Location

Unit Letter A : 1100 Feet From The North Line and 790 Feet From The East Line
Section 16 Township 29N Range 12W NMPM San Juan County

10. Proposed Depth

1985

11. Formation

Fruitland Coal

12. Rotary or C.T.

Rotary

13. Elevations (Show whether DF, RT, GR, etc.)

5784

14. Kind & Status Plug. Bond

National Blanket Not selected

15. Drilling Contractor

16. Approx. Date Work will start

5/15/90

17.

PROPOSED CASING AND CEMENT PROGRAM

N/320

SIZE OF HOLE	SIZE OF CASING	WEIGHT PER FOOT	SETTING DEPTH	SACKS OF CEMENT	EST. TOP
12 1/4	9 5/8	32.3	350'	210sxs B	Surface
8 3/4	7	23.0	1985'	95 sxs 65/35	
				100 sxs 50/50	Surface

Union Texas Petroleum, INC. wishes to advise that we intend to drill a 12 1/4" hole with spud mud to 350' and set 9 5/8", 32.3#, K-55 ST&C casing to 350' cementing to surface with 210 sxs (248 cu ft) Class B cement with 2% CaCl2. Wait on cement 12 hours. Nipple up and test BOP. Drill 8 3/4" hole out of surface to 1985' with mud. Log well. Set 7", 23.0#, N-80 LT&C production casing to 1985' cementing to surface with 95 sxs (273 cu ft) 65/35 POZ with 12% gel and 12 1/4# gilsonite/sk, tailed by 100 sxs (157 cu ft) 50/50 Poz w/ 4% gel, 6 1/4# gil/sk and 10# salt/sk. Perforate pay section and if necessary acidize and frac with 250,000# sand in 180,000 gal 30# cross linked gel. Clean up well and install standard production equipment. Test well to reserve pit for a period not to exceed 30 days. Connect well to a gathering system.

IN ABOVE SPACE DESCRIBE PROPOSED PROGRAM: IF PROPOSAL IS TO DEEPEN OR PLUG BACK, GIVE DATA ON PRESENT PRODUCTIVE ZONE AND PROPOSED NEW PRODUCTIVE ZONE. GIVE BLOWOUT PREVENTER PROGRAM, IF ANY.

I hereby certify that the information above is true and complete to the best of my knowledge and belief.

SIGNATURE

Don White

TITLE

REG PERMIT COORD

DATE

4-23-90

TYPE OR PRINT NAME

TELEPHONE NO.

(This space for State Use)

APPROVED BY

31

TITLE

SUPERVISOR DISTRICT #

CONDITIONS OF APPROVAL, IF ANY:

APPROVAL EXPIRES 10-26-90
UNLESS DRILLING IS COMMENCED.
SPUD NOTICE MUST BE SUBMITTED
WITHIN 10 DAYS.

DATE

APR 26 1990

1963

1963

OFFICE OF
THE ATTORNEY GENERAL

1963

Submit to Appropriate
District Office
State Lease - 4 copies
Fee Lease - 3 copies

State of New Mexico
Energy, Minerals and Natural Resources Department

Form C-102
Revised 1-1-89

OIL CONSERVATION DIVISION

P.O. Box 2088

Santa Fe, New Mexico 87504-2088

RECEIVED

APR 25 1990

**OIL CON. DIV.
DIST. 3**

DISTRICT I

P.O. Box 1980, Hobbs, NM 88240

DISTRICT II

P.O. Drawer DD, Artesia, NM 88210

DISTRICT III

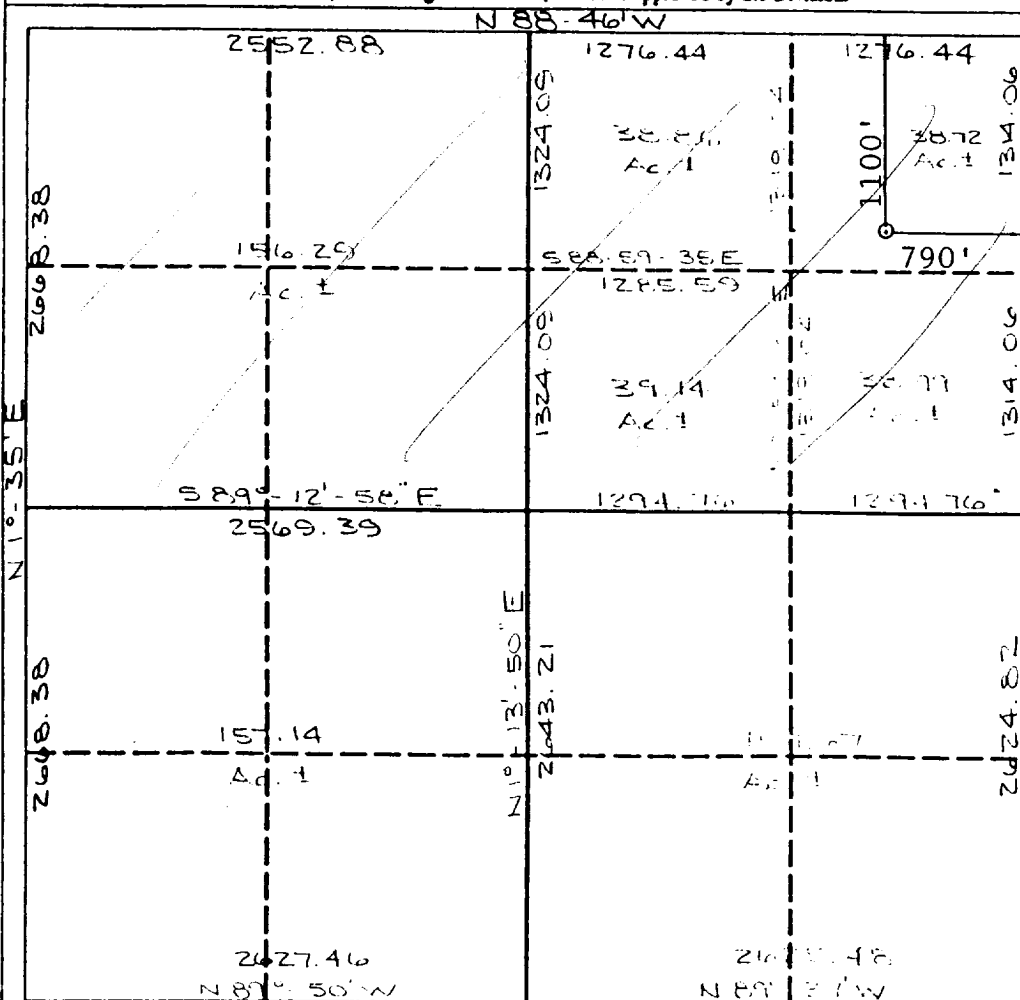
1000 Rio Brazos Rd., Aztec, NM 87410

WELL LOCATION AND ACREAGE DEDICATION PLAT, DIST. 3

All Distances must be from the outer boundaries of the section

Operator UNION TEXAS PETROLEUM			Lease NEW MEXICO "A" COM		Well No. 2
Unit Letter A	Section 16	Township 29N	Range 12W	County NMPM San Juan	
Actual Footage Location of Well: 1100' feet from the North line and 790' feet from the East line					
Ground level Elev. 5784		Producing Formation Fruitland Coal	Pool Basin Fruitland Coal	Dedicated Acreage: 312 N2 320 Acres	

1. Outline the acreage dedicated to the subject well by colored pencil or hatchure marks on the plat below.
2. If more than one lease is dedicated to the well, outline each and identify the ownership thereof (both as to working interest and royalty).
3. If more than one lease of different ownership is dedicated to the well, have the interest of all owners been consolidated by communitization, unitization, force-pooling, etc.?
☐ Yes ☐ No If answer is "yes" type of consolidation _____
If answer is "no" list the owners and tract descriptions which have actually been consolidated. (Use reverse side of this form if necessary).
No allowable will be assigned to the well until all interests have been consolidated (by communitization, unitization, forced-pooling, or otherwise) or until a non-standard unit, eliminating such interest, has been approved by the Division.



OPERATOR CERTIFICATION

I hereby certify that the information contained herein is true and complete to the best of my knowledge and belief.

Signature: *Ken White*
Printed Name: **KEN WHITE**
Position: **REG PERMIT COORD**
Company: **UNION TEXAS PETROLEUM**
Date: **4-23-90**

SURVEYOR CERTIFICATION

I hereby certify that the well location shown on this plat was plotted from field notes of actual surveys made by me or under my supervision, and that the same is true and correct to the best of my knowledge and belief.

Date Surveyed: **February 13, 1990**
Signature & Seal of Professional Surveyor: *Cecil B. Tullis*
Cecil B. Tullis
Certificate No.: **9672**

1. 1990年12月25日，在“九七”香港回归前，香港各界人士纷纷发表文章，就香港前途问题提出自己的看法。

ALL INFORMATION CONTAINED
HEREIN IS UNCLASSIFIED

[illegible]