

UNITED STATES  
DEPARTMENT OF THE INTERIOR  
BUREAU OF LAND MANAGEMENT

APPLICATION FOR PERMIT TO DRILL, DEEPEN, OR PLUG BACK

1a. TYPE OF WORK

DRILL ☒

DEEPEN ☐

PLUG BACK ☐

b. TYPE OF WELL

OIL  
WELL ☐

GAS  
WELL ☒

OTHER

SINGLE  
ZONE ☒

MULTIPLE  
ZONE ☐

2. NAME OF OPERATOR

BHP Petroleum (Americas) Inc.

3. ADDRESS OF OPERATOR

5847 San Felipe Suite 3600 Houston, Texas 77057-3005

4. LOCATION OF WELL (Report location clearly and in accordance with any State requirements.)\*

At surface

NW SE

At proposed prod. zone

1620 FSL 8 1850 FEL

14. DISTANCE IN MILES AND DIRECTION FROM NEAREST TOWN OR POST OFFICE\*

Approximately 5 miles southeast of Farmington N.M.

15. DISTANCE FROM PROPOSED\*

LOCATION TO NEAREST  
PROPERTY OR LEASE LINE, Approx 3,660'

(Also to nearest drig. unit line, if any) from unit boundary 2,561.19

18. DISTANCE FROM PROPOSED LOCATION\*

TO NEAREST WELL, DRILLING, COMPLETED,  
OR APPLIED FOR, ON THIS LEASE, FT.

< 150'

19. PROPOSED DEPTH

1536'

16. NO. OF ACRES IN LEASE

2,561.19

17. NO. OF ACRES ASSIGNED  
TO THIS WELL

160.04

21. ELEVATIONS (Show whether DF, RT, GR, etc.) This action is subject to technical and  
procedural review pursuant to 43 CFR 3165.3  
and appeal pursuant to 43 CFR 3165.4.  
PROPOSED CASING AND CEMENTING PROGRAM

5393' GR

Rotary

22. APPROX. DATE WORK WILL START\*

Fall 1990

23.

DRILLING OPERATIONS AUTHORIZED ARE  
SUBJECT TO COMPLIANCE WITH ATTACHED  
"GENERAL REQUIREMENTS"

SIZE OF HOLE	SIZE OF CASING	WEIGHT PER FOOT	SETTING DEPTH	QUANTITY OF CEMENT
8 3/4"	7"	20#	±130	50 sx (57.5 cu ft.)
6 1/4"	4 1/2"	10.5#	±1536'	194 sx (239 cu ft.)

RECEIVED

SEP 07 1990

OIL CON. DIST.

IN ABOVE SPACE DESCRIBE PROPOSED PROGRAM: If proposal is to deepen or plug back, give data on present productive zone and proposed new productive zone. If proposal is to drill or deepen directionally, give pertinent data on subsurface locations and measured and true vertical depths. Give blowout preventer program, if any.

24.

SIGNED

*Chuck Williams*  
Chuck Williams

TITLE

Field Services Administrator

DATE

7/17/90

(This space for Federal or State office use)

PERMIT NO.

APPROVAL DATE

APPROVED BY

CONDITIONS OF APPROVAL, IF ANY:

TITLE

NMOCD

\*See Instructions On Reverse Side

Submit to Appropriate  
District Office  
State Leases - 4 copies  
Fee Leases - 3 copies

State of New Mexico  
Energy, Minerals and Natural Resources Department

Form C-102  
Revised 1-1-89

OIL CONSERVATION DIVISION

P.O. Box 2088  
Santa Fe, New Mexico 87504-2088

DISTRICT I  
P.O. Box 1980, Hobbs, NM 88240

DISTRICT II  
P.O. Drawer DD, Artesia, NM 88210

DISTRICT III  
1000 Rio Brazos Rd., Aztec, NM 87410

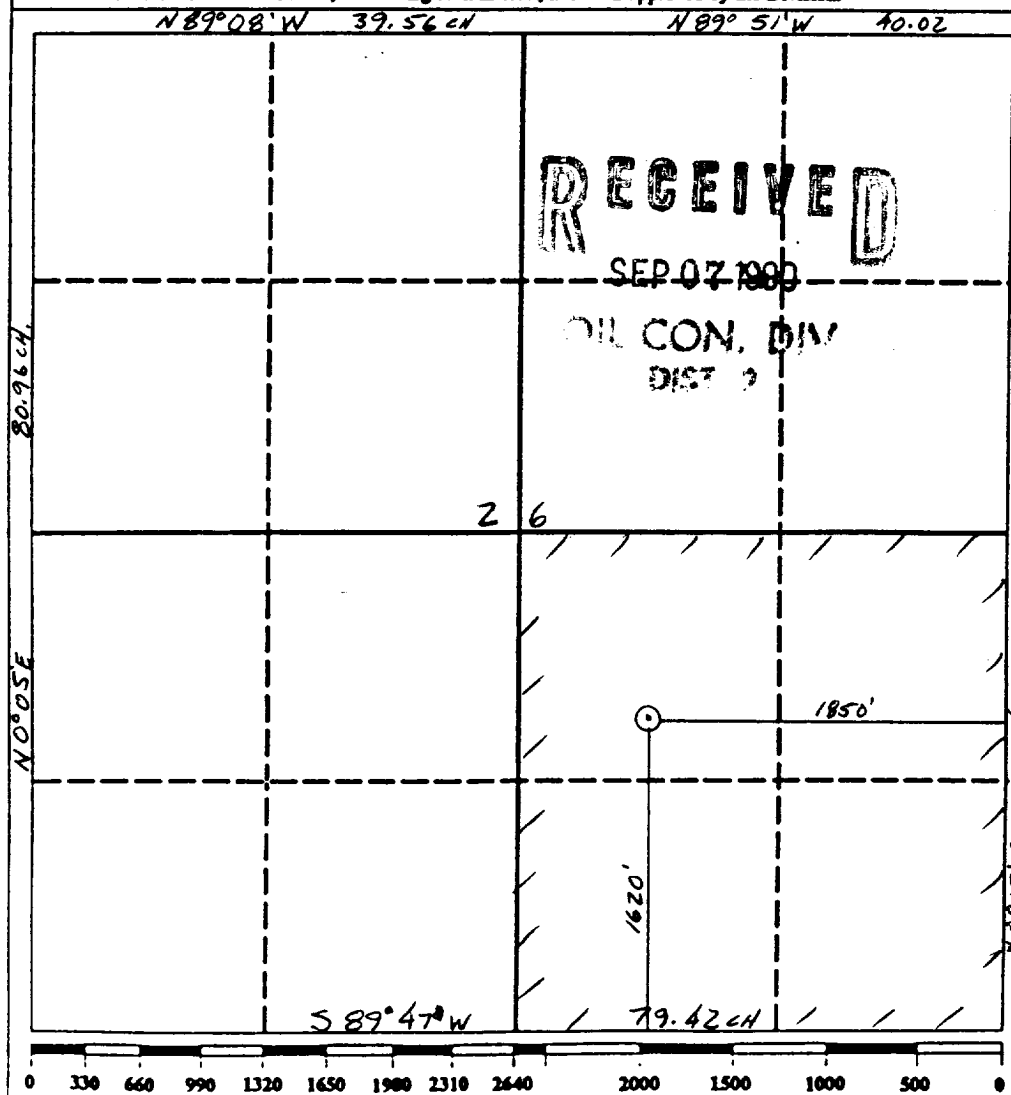
WELL LOCATION AND ACREAGE DEDICATION PLAT

All Distances must be from the outer boundaries of the section

Operator BHP Petroleum (Americas) Incorporated			Lease Gallegos Canyon Unit		Well No. 512
Unit Letter J	Section 26	Township 29N	Range 12W	County San Juan	

Actual Footage Location of Well: 1620 feet from the South line and 1850 feet from the East line					
Ground level Elev. 5393'	Producing Formation Pictured Cliffs		Pool W. Kutz Pictured Cliffs		Dedicated Acreage: 160.04 Acres

1. Outline the acreage dedicated to the subject well by colored pencil or hatchure marks on the plat below.
2. If more than one lease is dedicated to the well, outline each and identify the ownership thereof (both as to working interest and royalty).
3. If more than one lease of different ownership is dedicated to the well, have the interest of all owners been consolidated by communitization, unitization, force-pooling, etc?  
☐ Yes ☐ No If answer is "yes" type of consolidation \_\_\_\_\_  
If answer is "no" list the owners and tract descriptions which have actually been consolidated. (Use reverse side of this form if necessary). \_\_\_\_\_  
No allowable will be assigned to the well until all interests have been consolidated (by communitization, unitization, forced-pooling, or otherwise) or until a non-standard unit, eliminating such interest, has been approved by the Division.



OPERATOR CERTIFICATION

I hereby certify that the information contained herein is true and complete to the best of my knowledge and belief.

Signature *Chuck Williams*  
Printed Name  
Chuck Williams  
Position  
Field Services Administrator  
Company  
BHP Petroleum (Americas) Inc  
Date  
August 3, 1990

SURVEYOR CERTIFICATION

I hereby certify that the well location shown on this plat was plotted from field notes of actual surveys made by me or under my supervision, and that the same is true and correct to the best of my knowledge and belief. 7-11-90

Date Surveyed  
Roy A. Rush

Signature & Seal of Professional Surveyor  
*Roy A. Rush*  
8894  
Certificate  
8894  
NEW MEXICO  
REGISTERED PROFESSIONAL LAND SURVEYOR

BHP Petroleum Inc.  
Gallegos Canyon Unit #512  
1620' FSL & 1850' FEL  
Sec. 26, T29N, R12W  
San Juan Co. NM

