

UNITED STATES
DEPARTMENT OF THE INTERIOR
BUREAU OF LAND MANAGEMENT

APPLICATION FOR PERMIT TO DRILL, DEEPEN, OR PLUG BACK

30-045-28310

1a. TYPE OF WORK

DRILL ☒

DEEPEN ☐

PLUG BACK ☐

b. TYPE OF WELL

OIL
WELL ☐

GAS
WELL ☒

OTHER

SINGLE
ZONE ☒

MULTIPLE
ZONE ☐

2. NAME OF OPERATOR

BHP Petroleum (Americas) Inc.

3. ADDRESS OF OPERATOR

5847 San Felipe Ste 3600 Houston TX 77057-3005

4. LOCATION OF WELL (Report location clearly and in accordance with any State requirements.)*

At surface

SWSW

At proposed prod. zone

720 FSL & 1155 FSL

14. DISTANCE IN MILES AND DIRECTION FROM NEAREST TOWN OR POST OFFICE*

Approximately 3 miles south of Farmington, New Mexico

15. DISTANCE FROM PROPOSED*

LOCATION TO NEAREST PROPERTY OR LEASE LINE, FT.
(Also to nearest drig. unit line, if any) Unit Boundary

Approx. 6435' from

18. DISTANCE FROM PROPOSED LOCATION*
TO NEAREST WELL, DRILLING, COMPLETED,
OR APPLIED FOR, ON THIS LEASE, FT.

150'

16. NO. OF ACRES IN LEASE

2,561.19 1160

19. PROPOSED DEPTH

1757'

17. NO. OF ACRES ASSIGNED
TO THIS WELL

320

20. ROTARY OR CABLE TOOLS

Rotary

21. ELEVATIONS (Show whether DF, RT, GR, etc.)

5851' GR

This action is subject to technical and
procedural review pursuant to 43 CFR 3165.3

22. APPROX. DATE WORK WILL START*

Fall 1990

23. and appeal pursuant to 43 CFR 3165.4

DRILLING OPERATIONS AUTHORIZED ARE
SUBJECT TO COMPLIANCE WITH ATTACHED
GENERAL CONDITIONS

SIZE OF HOLE	SIZE OF CASING	WEIGHT PER FOOT	SETTING DEPTH	QUANTITY OF CEMENT
8 3/4"	7"	20#	± 130"	50' SX (57.5 cu.ft.)
6 1/4"	4 1/2"	10.5#	± 1757"	221' SX (273 cu.ft.)

RECEIVED
OCT 1 1990
OIL CON. DIV.
DIST. 3

IN ABOVE SPACE DESCRIBE PROPOSED PROGRAM: If proposal is to deepen or plug back, give data on present productive zone and proposed new productive zone. If proposal is to drill or deepen directionally, give pertinent data on subsurface locations and measured and true vertical depths. Give blowout preventer program, if any.

24.

SIGNED

Chuck Williams

TITLE

Field Services Administrator

DATE

8/1/90

(This space for Federal or State office use)

PERMIT NO.

APPROVAL DATE

APPROVED BY

TITLE

DATE

CONDITIONS OF APPROVAL, IF ANY:

Held C-184 N540

For John Kelber

*See Instructions On Reverse Side

Submit to Appropriate
District Office
State Lease - 4 copies
Fee Lease - 3 copies

State of New Mexico
Energy, Minerals and Natural Resources Department

Form C-882
Revised 1-4-89

OIL CONSERVATION DIVISION

P.O. Box 2088

Santa Fe, New Mexico 87504-2088

DISTRICT I

P.O. Box 1980, Hobbs, NM 88240

DISTRICT II

P.O. Drawer DD, Artesia, NM 88210

DISTRICT III

1000 Rio Brazos Rd., Aztec, NM 87410

WELL LOCATION AND ACREAGE DEDICATION PLAT

All Distances must be from the outer boundaries of the section

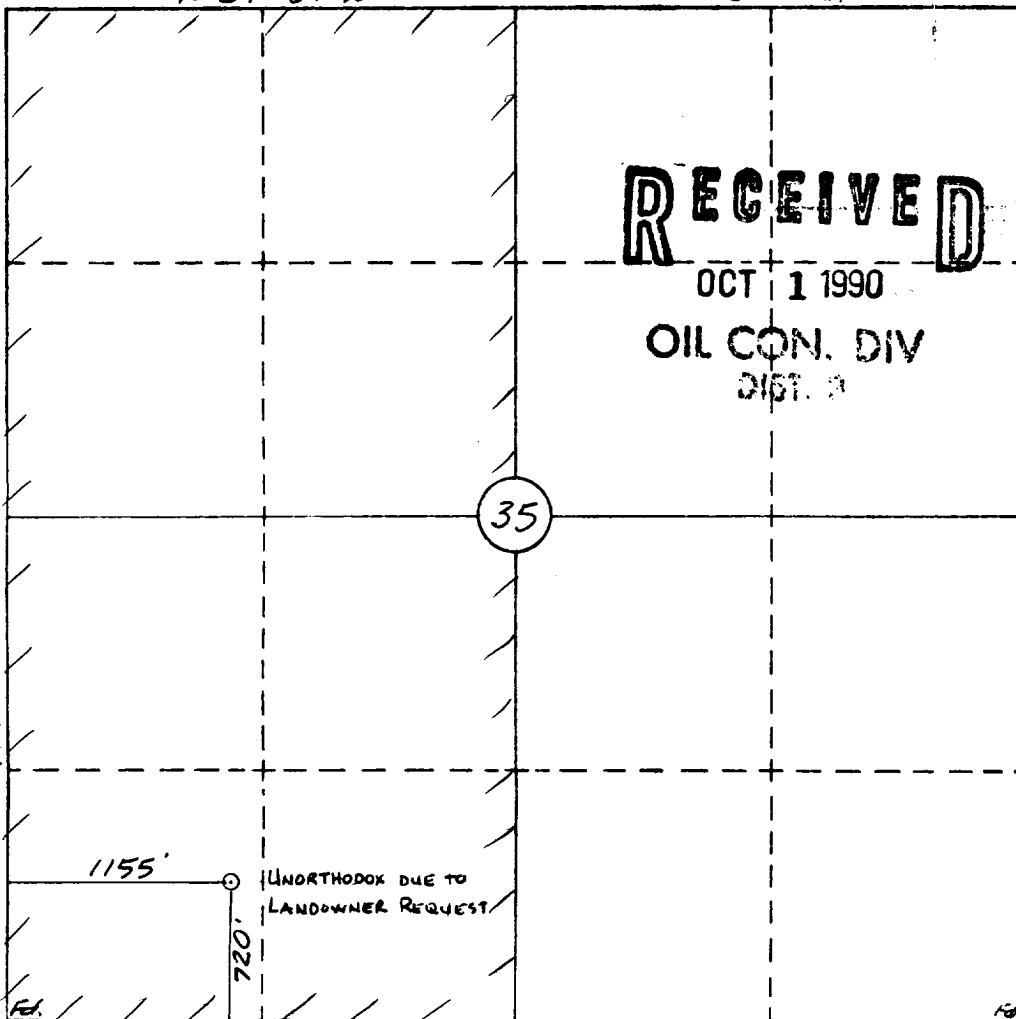
Operator BHP PETROLEUM (AMERICAS) INC.			Lease GALLEGOS CANYON UNIT		Well No. 396
Unit Letter M	Section 35	Township 29 N	Range 13 W	County San Juan	
Actual Footage Location of Well: 720 feet from the South line and 1155 feet from the West line					
Ground level Elev. 5851	Producing Formation Fruitland Coal		Pool Basin Fruitland Coal		Dedicated Acreage 320 Acres

1. Outline the acreage dedicated to the subject well by colored pencil or hatchure marks on the plat below.
2. If more than one lease is dedicated to the well, outline each and identify the ownership thereof (both as to working interest and royalty).
3. If more than one lease of different ownership is dedicated to the well, have the interest of all owners been consolidated by communitization, unitization, force-pooling, etc.?
☐ Yes ☐ No If answer is "yes" type of consolidation _____
If answer is "no" list the owners and tract descriptions which have actually been consolidated. (Use reverse side of this form if necessary.) _____
No allowable will be assigned to the well until all interests have been consolidated (by communitization, unitization, forced-pooling, or otherwise) or until a non-standard unit, eliminating such interest, has been approved by the Division.

0 330 660 990 1320 1650 1980 2310 2640 2970 3300 3630 3960 4290 4620 4950 5280 5610 5940 6270 6600

N 89° 57' W

80.24 ch.



OPERATOR CERTIFICATION

I hereby certify that the information contained herein is true and complete to the best of my knowledge and belief.

Signature
Chuck Williams
Printed Name
Chuck Williams
Position
Field Services Administrator
Company
BHP Petroleum (Americas) Inc.
Date
7/26/90

SURVEYOR CERTIFICATION

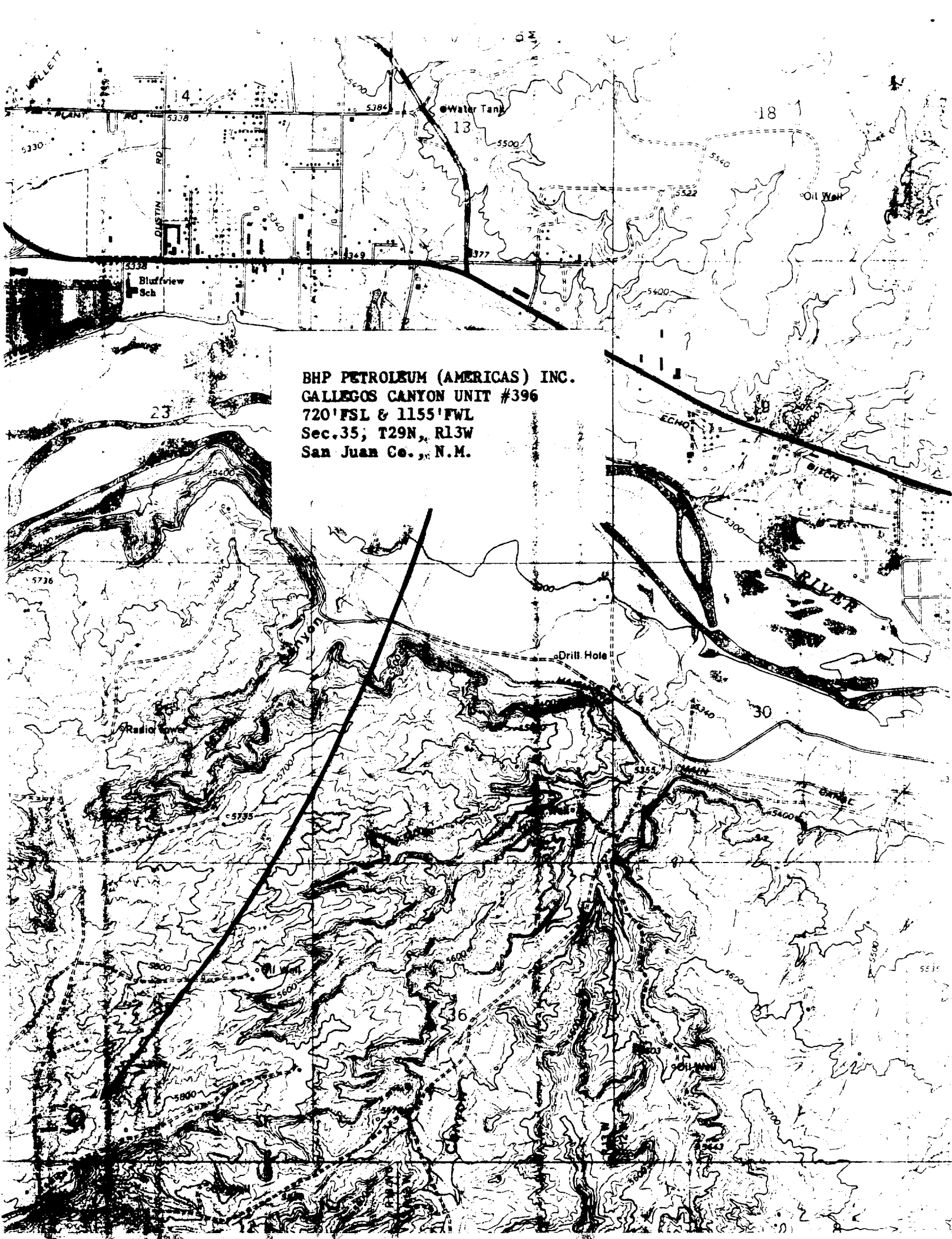
I hereby certify that the well location shown on this plat was plotted from field notes of actual surveys made by me or under my supervision, and that the same is true and correct to the best of my knowledge and belief.

7-13-90

Date Surveyed
William F. Mahnke II

Signature of State Professional Surveyor
William F. Mahnke II

Professional Surveyor
WILLIAM F. MAHNKE II
New Mexico
#8466
Certification No. **8466**
PROFESSIONAL LAND SURVEYOR



BHP PETROLEUM (AMERICAS) INC.
GALLEGOS CANYON UNIT #396
720' FSL & 1155' FWL
Sec. 35; T29N, R13W
San Juan Co., N.M.