

UNITED STATES  
DEPARTMENT OF THE INTERIOR  
BUREAU OF LAND MANAGEMENT

30-045-28764

APPLICATION FOR PERMIT TO DRILL, DEEPEN, OR PLUG BACK

1. TYPE OF WORK  
 DRILL       DEEPEN       PLUG BACK

2. TYPE OF WELL  
 OIL WELL       GAS WELL       OTHER       SINGLE ZONE       MULTIPLE ZONE

2. NAME OF OPERATOR  
 BHP Petroleum (Americas), Inc. 2217

3. ADDRESS OF OPERATOR  
 P.O. Box 977 Farmington, New Mexico

4. LOCATION OF WELL (Report location clearly and in accordance with any State requirements.)  
 At surface  
 1000' FSL and 790' FWL  
 At proposed prod. zone  
 Same

4. DISTANCE IN MILES AND DIRECTION FROM NEAREST TOWN OR POST OFFICE\*  
 4.5 miles southeast of Farmington, New Mexico

18. DISTANCE FROM PROPOSED LOCATION TO NEAREST PROPERTY OR LEASE LINE, FT. (Also to deepest drig. unit line, if any)      320'

16. NO. OF ACRES IN LEASE      2,899.75

17. NO. OF ACRES ASSIGNED TO THIS WELL      319.68

18. DISTANCE FROM PROPOSED LOCATION TO NEAREST WELL, DRILLING, COMPLETION, OR APPLIED FOR, ON THIS LEASE, FT.      920'

19. PROPOSED DEPTH      1500'

20. ROTARY OR CABLE TOOLS  
 Rotary

21. MEASUREMENTS (Show whether DF, RT, GR, etc.)  
 5565' GR

22. APPROX. DATE WORK WILL START\*  
 As soon as approved

5. LEASE DESIGNATION AND SERIAL NO.  
 SFO78109

6. IF INDIAN, ALLOTTEE OR TRIBE NAME

7. UNIT AGREEMENT NAME  
 Gallegos Canyon Unit

8. FARM OR LEASE NAME  
 2038  
 Gallegos Canyon Unit

9. WELL NO.  
 411

10. FIELD AND POOL, OR WILDCAT  
 Basin Fruitland Coal 71629

11. SEC. T. R. M., OR B.L. AND SURVEY OR AREA  
 Sec. 34, T29N, R12W, NMPM

12. COUNTY OR PARISH  
 San Juan

13. STATE  
 NM

23. PROPOSED CASING AND CEMENTING PROGRAM

SIZE OF HOLE	SIZE OF CASING	WEIGHT PER FOOT	SETTING DEPTH	QUANTITY OF CEMENT
8 3/4"	7"	20# K-55	140'	50 sx (59 cu ft) Circ to surface
6 1/4"	4 1/2"	10.5# K-55	1500'	230 sx (286 cu ft) Circ to surface

Propose to spud in San Jose Formation. Will drill a 8 3/4" hole to a TD of 140'. Run and cement surface casing with cement returns to surface. WOC 12 hours. Test to 2000 psi/30 minutes. Drill a 6 1/4" hole to a TD of 1500' using fresh water mud. No abnormal pressures or poisonous gases are anticipated. Adequate weight material will be on location to control flows from the Farmington sands. Run logs at TD. Run and cement production casing with cement returns to surface. WOC 12 hours. Move out drilling rig and move in completion unit. Pressure test to 2500 psi/30 minutes prior to perforating. Run cased hole correlation logs. Perforate Fruitland Coals and stimulate using a fresh water based gel or foam system.

30' of new, on lease, access road BLM ROW is applied for via this APD. All existing access road BLM ROW has been applied for via Form 299.

Surface ownership is BLM.

RECEIVED  
AUG 27 1992

24. SIGNED J. Fred Lowrey TITLE Operations Superintendent DATE 07/24/92

(This space for Federal or State office use)

PERMIT NO. \_\_\_\_\_ APPROVAL DATE \_\_\_\_\_

APPROVE \_\_\_\_\_ TITLE \_\_\_\_\_

CONDITIONS OF APPROVAL \_\_\_\_\_

**APPROVED  
AS AMENDED**

**AUG 07 1992**

*Oil Con. Div.*  
OIL CON. DIV.  
DIST. 3

NMOCD

**AREA MANAGER**

\*See Instructions On Reverse Side

Submit to Appropriate District Office  
 State Leases - 4 copies  
 Fee Leases - 3 copies

State of New Mexico  
 Energy, Minerals and Natural Resources Department

Form C-182  
 Revised 1-1-89

**OIL CONSERVATION DIVISION**  
 P.O. Box 2088  
 Santa Fe, New Mexico 87504-2088

RECEIVED  
 OLM

22 JUL 27 PM 3:35

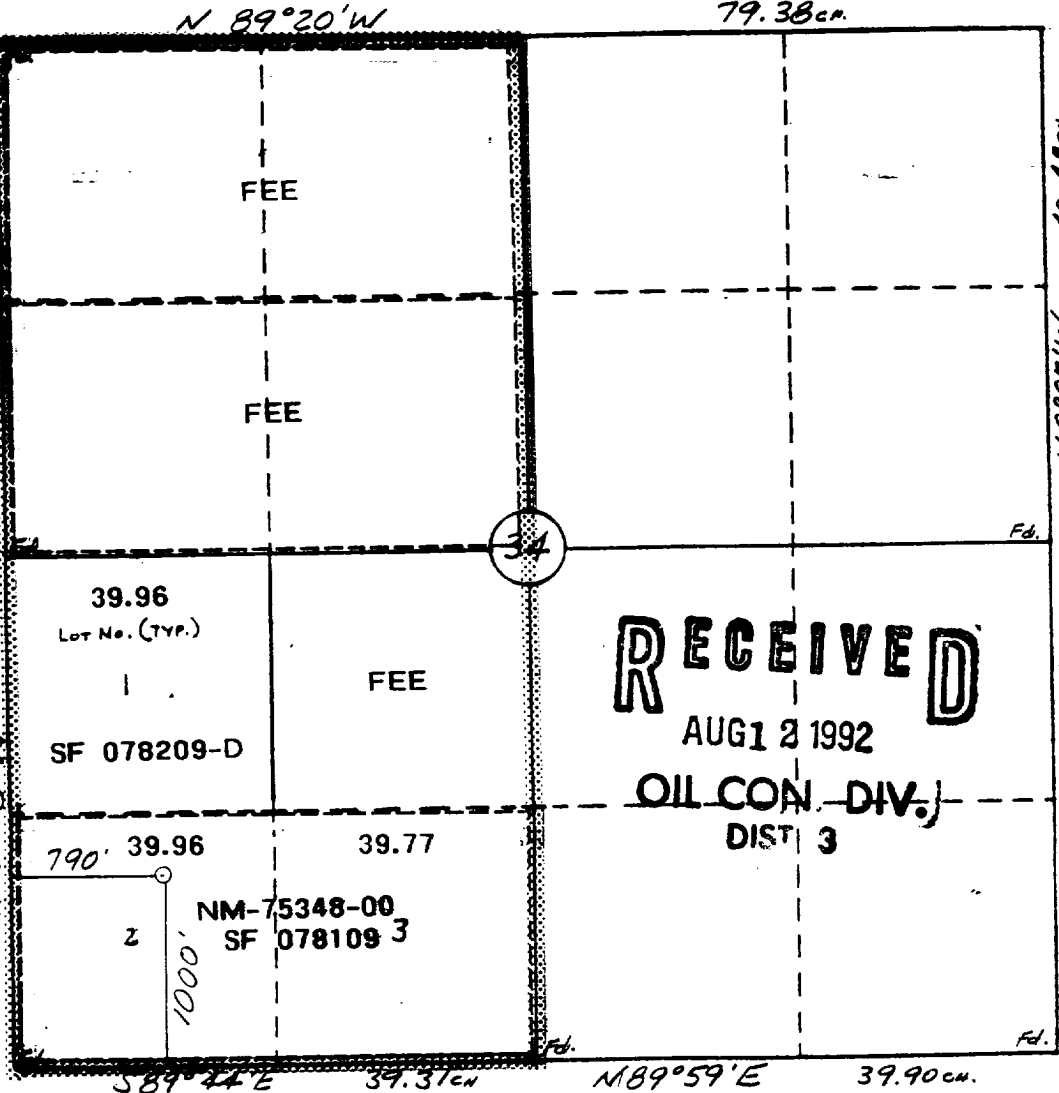
**DISTRICT I**  
 P.O. Box 1980, Hobbs, NM 88240

**DISTRICT II**  
 P.O. Drawer DD, Artesia, NM 88210

**DISTRICT III**  
 1000 Rio Brazos Rd., Aztec, NM 87410

**WELL LOCATION AND ACREAGE DEDICATION PLAT**  
 All Distances must be from the outer boundaries of the section

Operator <b>BHP PETROLEUM (AMERICAS) INC.</b>			Lease <b>GALLEGOS CANYON UNIT</b>		Well No. <b>411</b>
Unit Letter <b>M</b>	Section <b>34</b>	Township <b>29 N</b>	Range <b>12 W</b>	County <b>San Juan</b>	<b>NMPM</b>
Actual Footage Location of Well: <b>1000</b> feet from the <b>South</b> line and <b>790</b> feet from the <b>West</b> line					
Ground level Elev. <b>5565</b>	Producing Formation <b>Fruitland Coal</b>		Pool <b>Basin Fruitland Coal</b>		Dedicated Acreage: <b>319.62</b> Acres
1. Outline the acreage dedicated to the subject well by colored pencil or ink on the plat below. 2. If more than one lease is dedicated to the well, outline each and identify the ownership thereof (both as to working interest and royalty). 3. If more than one lease of different ownership is dedicated to the well, have the interest of all owners been consolidated by communitization, unitization, force-pooling, etc.? <input checked="" type="checkbox"/> Yes <input type="checkbox"/> No    If answer is "yes" type of consolidation: <u>Unitization</u> If answer is "no" list the owners and trust descriptions which have actually been consolidated. (Use reverse side of this form if necessary). No allowance will be assigned to the well until all interests have been consolidated (by communitization, unitization, force-pooling, or otherwise) or until a non-standard unit, eliminating such interest, has been approved by the Division.					



**OPERATOR CERTIFICATION**  
 I hereby certify that the information contained herein is true and complete to the best of my knowledge and belief.

Signature: Fred Lowery  
 Printed Name: Fred Lowery  
 Position: Operations Superintendent  
 Company: BHP Petroleum (Americas), Inc.  
 Date: 07/24/92

**SURVEYOR CERTIFICATION**  
 I hereby certify that the well location shown on this plat was plotted from field notes of actual surveys made by me or under my supervision, and that the same is true and correct to the best of my knowledge and belief.

Date Surveyed: 6-2-92  
 Signature: William E. Mahanke II  
 Professional Seal of William E. Mahanke II, Surveyor, New Mexico, #8466

**RECEIVED**  
 AUG 2 1992  
 OIL CON. DIV.  
 DIST 3

# VICINITY MAP

R 12 W

BHP Petroleum (Americas), Inc.  
G.C.U. #411  
1000' FSL and 790' FWL  
Sec. 34, T29N, R12W  
San Juan Co., N.M.

T  
2  
9  
N

