

UNITED STATES
DEPARTMENT OF THE INTERIOR

BUREAU OF LAND MANAGEMENT *30-045-28802*

APPLICATION FOR PERMIT TO DRILL, DEEPEN, OR PLUG BACK

1a. TYPE OF WORK

DRILL ☒

DEEPEN ☐

PLUG BACK ☐

b. TYPE OF WELL

OIL
WELL ☐

GAS
WELL ☒

OTHER

SINGLE
ZONE ☒

MULTIPLE
ZONE ☐

2. NAME OF OPERATOR

20572
SG Interests I, Ltd. Attn: A. M. O'Hare

3. ADDRESS OF OPERATOR

PO Box 421, Blanco NM 87412-0421 (505) 325-5599

4. LOCATION OF WELL (Report location clearly and in accordance with any State requirements.)*

At surface
870'
1725'
840' FSL, *1685'* FWL
At proposed prod. zone
same

14. DISTANCE IN MILES AND DIRECTION FROM NEAREST TOWN OR POST OFFICE*

Approximately 3.5 miles southeast of Bloomfield

15. DISTANCE FROM PROPOSED*

LOCATION TO NEAREST
PROPERTY OR LEASE LINE, FT.
(Also to nearest drlg. unit line, if any)

840'

16. NO. OF ACRES IN LEASE

560

17. NO. OF ACRES ASSIGNED
TO THIS WELL

W/320

18. DISTANCE FROM PROPOSED LOCATION*

TO NEAREST WELL, DRILLING, COMPLETED,
OR APPLIED FOR, ON THIS LEASE, FT.

1200'

19. PROPOSED DEPTH

1970'

20. ROTARY OR CABLE TOOLS

Rotary

21. ELEVATIONS (Show whether DF, RT, GR, etc.)

5667' GL, 5680' KB

*This action is subject to technical and
procedural review pursuant to 43 CFR 3165.3
and appeal pursuant to 43 CFR 3165.4.*

22. APPROX. DATE WORK WILL START*

October 15, 1992

23.

PROPOSED CASING AND CEMENTING PROGRAM

DRILLING OPERATIONS AUTHORIZED ARE
SUBJECT TO COMPLIANCE WITH ATTACHED
GENERAL REQUIREMENTS.

SIZE OF HOLE	SIZE OF CASING	WEIGHT PER FOOT	SETTING DEPTH
12-1/4"	8-5/8"	24#, J-55	250'
7-7/8"	5-1/2"	15.5#, J-55	1970'

QUANTITY OF CEMENT
200 sx Class B w/2% CaCl₂
200 sx 65/35 Pozmix w/6% ge.
100 sx Class B w/2% CaCl₂ ta.

SG Interests I, Ltd. is proposing to drill a vertical well to develop the Basin Fruitland Coal formation at the above described site in accordance with the drilling and surface use programs attached to this application.

This application is also serving as an application to obtain BLM road right-of-way. The right-of-way will consist of a new road from location west to an existing road. The proposed right-of-way crosses the SW/4 of sec. 31, T29N, R10W, the E/2 of sec. 7, NE/4 and W/2 of sec. 18, T28N, R10W, and the NE/4 of sec. 13, T28N, R11W. The distance is approximately 2.5 miles and the right-of-way width requested is 30'.

If there are any questions please contact A. M. O'Hare at (505) 325-5599.

IN ABOVE SPACE DESCRIBE PROPOSED PROGRAM: If proposal is to deepen or plug back, give data on present productive zone and proposed new productive zone. If proposal is to drill or deepen directionally, give pertinent data on subsurface locations and measured and true vertical depths. Give blowout preventer program, if any.

24.

SIGNED

Dana M. Hyde

TITLE Agent for SG Interests

DATE *9-18-92*

(This space for Federal or State office use)

PERMIT NO.

RECEIVED

APPROVAL DATE

APPROVED
AS AMENDED

APPROVED BY

Oct 27 1992

TITLE

CONDITIONS OF APPROVAL, IF ANY:

OK @ OIL CON. DIV
DIST. 3

NMOCD

Oct 23 1992
[Signature]
AREA MANAGER

Submit to Appropriate
District Office
State Lease - 4 copies
Fee Lease - 3 copies

State of New Mexico
Energy, Minerals and Natural Resources Department

RECEIVED
BLM

Form C-102
Revised 1-1-89

OIL CONSERVATION DIVISION

DISTRICT I
P.O. Box 1980, Hobbs, NM 88240

P.O. Box 2088

Santa Fe, New Mexico 87504-2088

92 OCT -2 AM 7:44

DISTRICT II
P.O. Drawer DD, Artesia, NM 88210

019 FARMINGTON, N.M.

DISTRICT III
1000 Rio Brazos Rd., Aztec, NM 87410

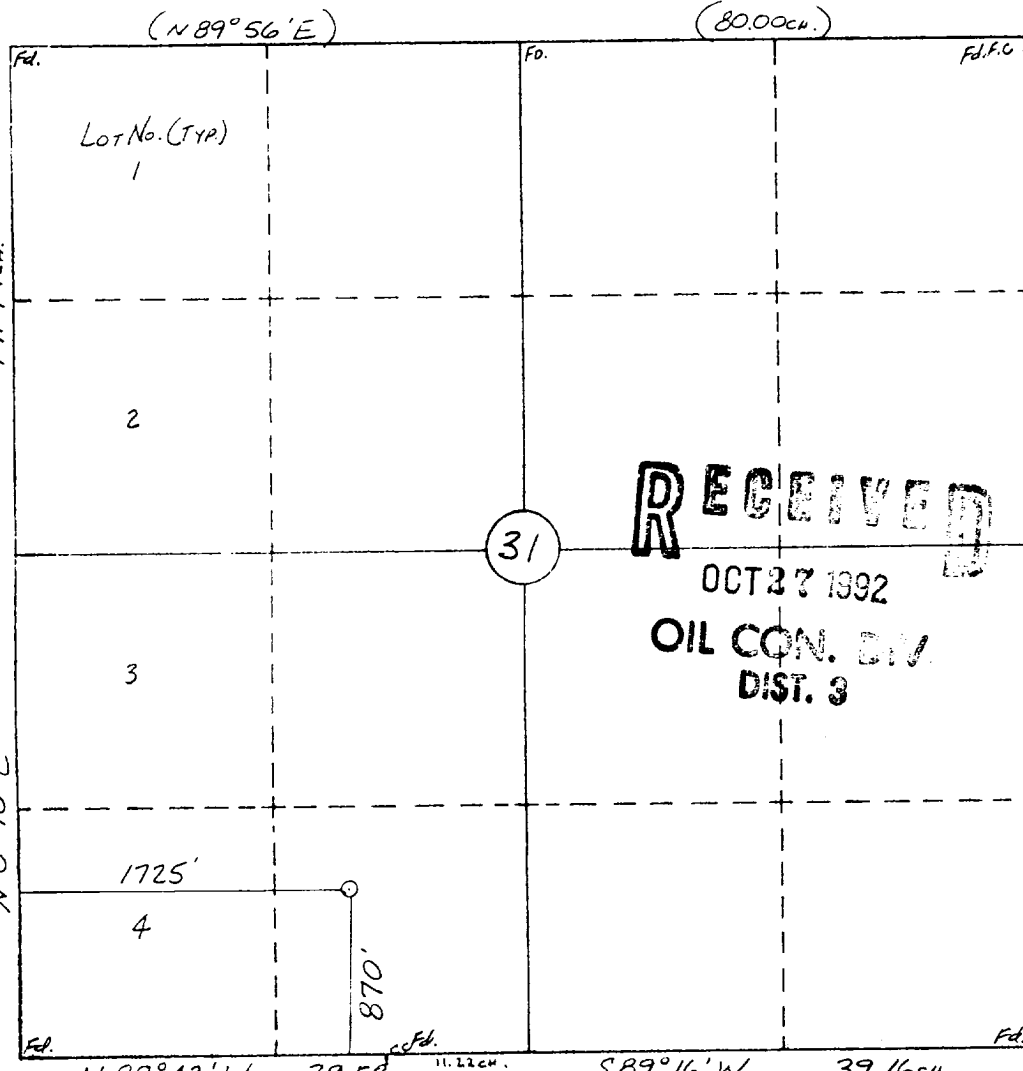
WELL LOCATION AND ACREAGE DEDICATION PLAT

All Distances must be from the outer boundaries of the section

Operator S G INTERESTS I, LTD.			Lease FEDERAL 29-10-31		Well No. 2
Unit Letter N	Section 31	Township 29 N	Range 10 W	County San Juan	
Actual Footage Location of Well 870 feet from the South line and 1725 feet from the West line					
Ground level Elev. 5666	Producing Formation Coal		Pool Baria Est	Dedicated Acreage 32.0 Acres	

- Outline the acreage dedicated to the subject well by colored pencil or hachure marks on the plat below.
- If more than one lease is dedicated to the well, outline each and identify the ownership thereof (both as to working interest and royalty).
- If more than one lease of different ownership is dedicated to the well, have the interest of all owners been consolidated by communitization, unitization, force-pooling, etc.?
☐ Yes ☐ No If answer is "yes" type of consolidation _____
If answer is "no" list the owners and tract descriptions which have actually been consolidated. (Use reverse side of this form if necessary.)
No allowable will be assigned to the well until all interests have been consolidated (by communitization, unitization, forced-pooling, or otherwise) or until a non-standard unit, eliminating such interest, has been approved by the Division.

0 330 660 990 1320 1650 1980 2310 2640 2000 1500 1000 500 0



OPERATOR CERTIFICATION

I hereby certify that the information contained herein is true and complete to the best of my knowledge and belief.

Signature
Dana M. Hyde
Printed Name
DANA M. Hyde
Position
Agent for SG Interests, Inc.
Company
Marathon Resources, Inc.
Date
9-29-92

SURVEYOR CERTIFICATION

I hereby certify that the well location shown on this plat was plotted from field notes of actual surveys made by me or under my supervision, and that the same is true and correct to the best of my knowledge and belief.

9-26-92

Date Surveyed
William E. Mahnke II

Signature & Seal of
Professional Surveyor
#8466
Certificate No. 8466
PROFESSIONAL LAND SURVEYOR

SG Interests I, Ltd
Federal 29-10-31 #2
870' FSL, 1725' FWL
Sec. 31, T29N, R10W
San Juan Co., NM

This is a detailed topographic map of a region in San Juan County, New Mexico. The map features a grid system with section numbers (e.g., 36, 37, 38, 39, 40, 41, 42, 43, 44, 45, 46, 47, 48, 49, 50, 51, 52, 53, 54, 55, 56, 57, 58, 59, 60, 61, 62, 63, 64, 65, 66, 67, 68, 69, 70, 71, 72, 73, 74, 75, 76, 77, 78, 79, 80, 81, 82, 83, 84, 85, 86, 87, 88, 89, 90, 91, 92, 93, 94, 95, 96, 97, 98, 99, 100) and section letters (e.g., A, B, C, D, E, F, G, H, I, J, K, L, M, N, O, P, Q, R, S, T, U, V, W, X, Y, Z). The map shows a complex terrain with numerous contour lines indicating elevation. Key geographical features include Tom Gale Canyon, Sullivan Canyon, and Crighion Canyon. Several survey points are marked with numbers and letters, such as 5681, 5682, 5683, 5684, 5685, 5686, 5687, 5688, 5689, 5690, 5691, 5692, 5693, 5694, 5695, 5696, 5697, 5698, 5699, 5700, 5701, 5702, 5703, 5704, 5705, 5706, 5707, 5708, 5709, 5710, 5711, 5712, 5713, 5714, 5715, 5716, 5717, 5718, 5719, 5720, 5721, 5722, 5723, 5724, 5725, 5726, 5727, 5728, 5729, 5730, 5731, 5732, 5733, 5734, 5735, 5736, 5737, 5738, 5739, 5740, 5741, 5742, 5743, 5744, 5745, 5746, 5747, 5748, 5749, 5750, 5751, 5752, 5753, 5754, 5755, 5756, 5757, 5758, 5759, 5760, 5761, 5762, 5763, 5764, 5765, 5766, 5767, 5768, 5769, 5770, 5771, 5772, 5773, 5774, 5775, 5776, 5777, 5778, 5779, 5780, 5781, 5782, 5783, 5784, 5785, 5786, 5787, 5788, 5789, 5790, 5791, 5792, 5793, 5794, 5795, 5796, 5797, 5798, 5799, 5800, 5801, 5802, 5803, 5804, 5805, 5806, 5807, 5808, 5809, 5810, 5811, 5812, 5813, 5814, 5815, 5816, 5817, 5818, 5819, 5820, 5821, 5822, 5823, 5824, 5825, 5826, 5827, 5828, 5829, 5830, 5831, 5832, 5833, 5834, 5835, 5836, 5837, 5838, 5839, 5840, 5841, 5842, 5843, 5844, 5845, 5846, 5847, 5848, 5849, 5850, 5851, 5852, 5853, 5854, 5855, 5856, 5857, 5858, 5859, 5860, 5861, 5862, 5863, 5864, 5865, 5866, 5867, 5868, 5869, 5870, 5871, 5872, 5873, 5874, 5875, 5876, 5877, 5878, 5879, 5880, 5881, 5882, 5883, 5884, 5885, 5886, 5887, 5888, 5889, 5890, 5891, 5892, 5893, 5894, 5895, 5896, 5897, 5898, 5899, 5900, 5901, 5902, 5903, 5904, 5905, 5906, 5907, 5908, 5909, 5910, 5911, 5912, 5913, 5914, 5915, 5916, 5917, 5918, 5919, 5920, 5921, 5922, 5923, 5924, 5925, 5926, 5927, 5928, 5929, 5930, 5931, 5932, 5933, 5934, 5935, 5936, 5937, 5938, 5939, 5940, 5941, 5942, 5943, 5944, 5945, 5946, 5947, 5948, 5949, 5950, 5951, 5952, 5953, 5954, 5955, 5956, 5957, 5958, 5959, 5960, 5961, 5962, 5963, 5964, 5965, 5966, 5967, 5968, 5969, 5970, 5971, 5972, 5973, 5974, 5975, 5976, 5977, 5978, 5979, 5980, 5981, 5982, 5983, 5984, 5985, 5986, 5987, 5988, 5989, 5990, 5991, 5992, 5993, 5994, 5995, 5996, 5997, 5998, 5999, 6000. The map also shows various other features such as roads, rivers, and landmarks. The title block in the top left corner provides information about the map's origin and purpose.