

UNITED STATES
DEPARTMENT OF THE INTERIOR
BUREAU OF LAND MANAGEMENT

30-045-29045

APPLICATION FOR PERMIT TO DRILL, DEEPEN, OR PLUG BACK

5. LEASE DESIGNATION
SF078109

6. INDIAN, ALLOTTEE, TRIBE NAME

7. UNIT AGREEMENT NAME
GALLEGOS CANYON UNIT

8. FARM OR LEASE NAME
GALLEGOS CANYON UNIT 2038

9. WELL NO. **421**

10. FIELD and POOL or WILDCAT
Basin Fruitland Coal 7/16/29

11. SEC., T., R., M., or BLK
Sec. 31, T29N, R12W, NMPM

12. COUNTY or PARISH
San Juan

13. STATE
NM

1a. TYPE of WORK
DRILL ☒ DEEPEN ☐ PLUG BACK ☐

b. TYPE of WELL
OIL WELL ☐ GAS WELL ☒ OTHER ☐ SINGLE ZONE ☒ MULTIPLE ZONE ☐

2. NAME of OPERATOR
BHP Petroleum (Americas), Inc. 2217

3. ADDRESS of OPERATOR
P.O. Box 977 Farmington, NM 87499

4. LOCATION of WELL
1605' FSL & 1150' FWL

14. DISTANCE IN MILES and DIRECTION from NEAREST TOWN
2.6 miles southeast of Farmington, NM

15. DISTANCE from PROPOSED LOCATION to NEAREST PROPERTY or LEASE LINE, Ft. **1150'**

16. NO. of ACRES in LEASE **1440 (e)**

17. NO. of ACRES ASSIGNED to WELL **307.82**

18. DISTANCE from PROPOSED LOCATION to NEAREST WELL, DRILLING, COMPLETED, or APPLIED FOR, ON THIS LEASE, Ft. **+/- 100'**

19. PROPOSED DEPTH **1567'**

20. ROTARY or CABLE TOOLS
Rotary

21. ELEVATIONS (Show DF, RT, GR, etc.)
5505' GR

22. APPROX. DATE WORK WILL START
As soon as approved

23. PROPOSED CASING and CEMENTING PROGRAM

SIZE of HOLE	SIZE of CASING	WEIGHT per FOOT	SETTING DEPTH	QUANTITY of CEMENT
8 3/4"	7"	20#K-55	130'	35 sx (41 cu ft) circ to surface
6 1/4"	4 1/2"	10.5#K-55	1567'	200 sx (248 cu ft) circ to surface

BHP Petroleum (Americas), Inc. proposes to spud in the Nacimiento Formation. Will drill an 8-3/4" hole to a TD of 130'. Run and cement surface casing with cement returns to surface. WOC 12 hours. Test casing to 2000 psi for 30 minutes. Drill a 6-1/4" hole to TD of 1567' using fresh water mud. No abnormal pressures or poisonous gases are anticipated. Adequate weight material will be on location to control flows from the Farmington sands. Run logs at TD. Run and cement production casing with cement returns to surface. WOC 12 hrs. Move out drilling rig and move in completion unit. Pressure test to 2500 psi for 30 minutes prior to perforating. Run cased hole correlation logs. Perforate Fruitland Coal and stimulate using a fresh water based gel or foam system.

Surface ownership is Fee.

RECEIVED
DEC 23 1993
OIL CON. DIV. I
DIST. 3

RECEIVED
DEC 21 1993
DISTRICT MANAGER

24. SIGNED: BRED LOWERY TITLE: Operations Superintendent DATE: 11/29/93

(This space for Federal or State office use)

PERMIT NO. _____ APPROVAL DATE _____

APPROVED BY [Signature] TITLE NMOC DATE DEC 21 1993

CONDITIONS of APPROVAL, IF ANY: _____

DISTRICT MANAGER

Submit to Appropriate
District Office
State Lease - 4 copies
Fee Lease - 3 copies

State of New Mexico
Energy, Minerals and Natural Resources Department

Form C-102
Revised 1-1-89

OIL CONSERVATION DIVISION

P.O. Box 2088
Santa Fe, New Mexico 87504-2088

DISTRICT I
P.O. Box 1980, Hobbs, NM 88240

DISTRICT II
P.O. Drawer DD, Artesia, NM 88210

DISTRICT III
1000 Rio Brazos Rd., Aztec, NM 87410

WELL LOCATION AND ACREAGE DEDICATION PLAT

All Distances must be from the outer boundaries of the section

COPIES - 1 PH 2-42

CTO MINERALS, NM

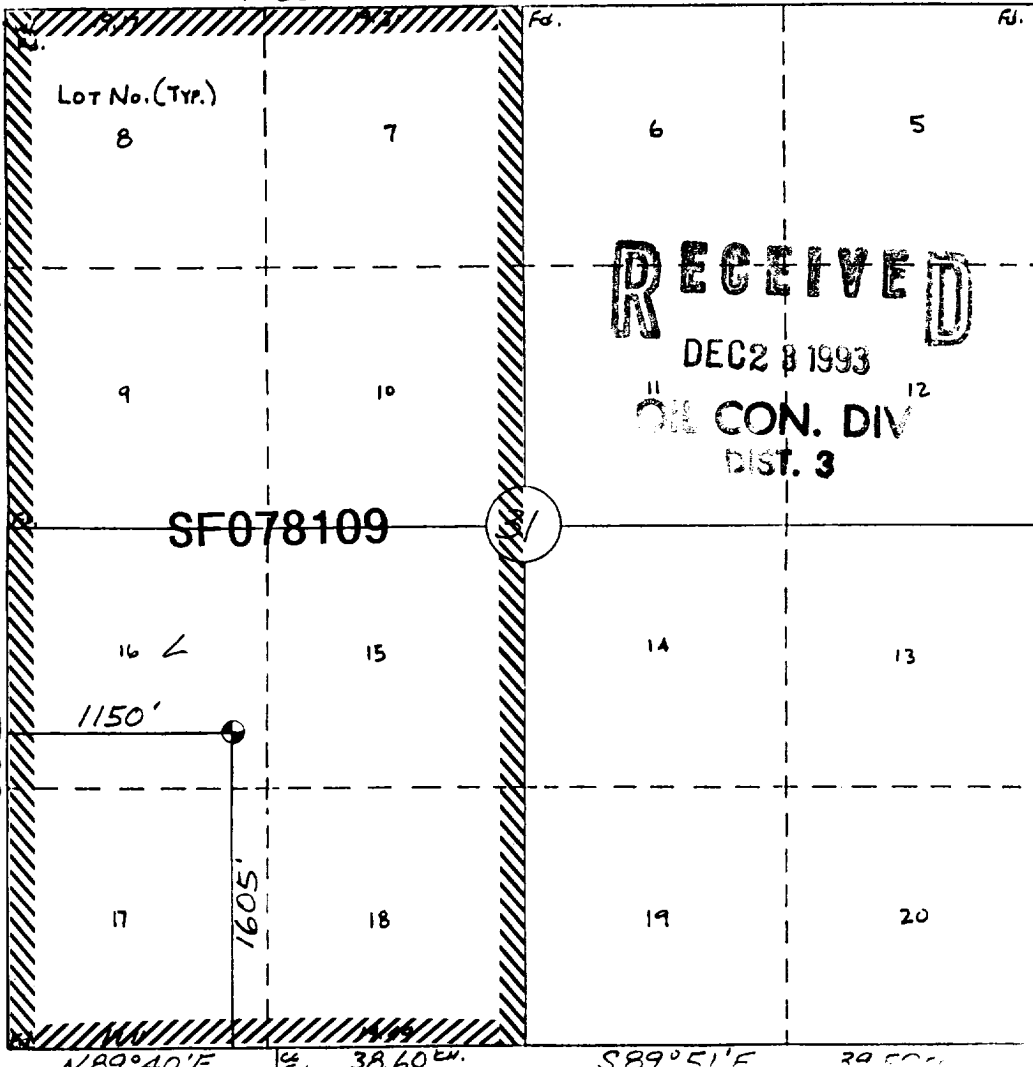
Operator BHP PETROLEUM (AMERICAS) INC.			Lease GALLEGOS CANYON UNIT		Well No. 421
Unit Letter L	Section 31	Township 29 N	Range 12 W	County San Juan	
Actual Footage Location of Well: 1605 feet from the South line and 1150 feet from the West line					
Ground level Elev. 5505	Producing Formation FRUITLAND COAL		Pool BASIN FRUITLAND COAL		Dedicated Acreage: 307.82 Acres

1. Outline the acreage dedicated to the subject well by colored pencil or hatchure marks on the plat below.
2. If more than one lease is dedicated to the well, outline each and identify the ownership thereof (both as to working interest and royalty).
3. If more than one lease of different ownership is dedicated to the well, have the interest of all owners been consolidated by communitization, unitization, force-pooling, etc.?
☒ Yes ☐ No If answer is "yes" type of consolidation UNIT
If answer is "no" list the owners and tract descriptions which have actually been consolidated. (Use reverse side of this form if necessary.)
No allowable will be assigned to the well until all interests have been consolidated (by communitization, unitization, forced-pooling, or otherwise) or until a non-standard unit, eliminating such interest, has been approved by the Division.

330 660 990 1320 1650 1980 2310 2640 2000 1500 1000 500 0

S89°33'W

77.10 ch.



OPERATOR CERTIFICATION

I hereby certify that the information contained herein is true and complete to the best of my knowledge and belief

Signature
FRED LOWERY
Printed Name
FRED LOWERY
Position
OPERATION SUPT.
Company
BHP PETROLEUM
Date
11-4-93

SURVEYOR CERTIFICATION

I hereby certify that the well location shown on this plat was plotted from field notes or actual surveys made by me or under my supervision, and that the same is true and correct to the best of my knowledge and belief.
28 Oct., 1993

Date Surveyed
William E. Mahnke II

Signature & Seal of Professional Surveyor
WILLIAM E. MAHNKE II
NEW MEXICO
#8466
Certified No. 8466
REGISTERED PROFESSIONAL LAND SURVEYOR

BHP PETROLEUM (AMERICA'S) INC.
G.C.U. #421
1605' FSL & 1150' FWL
Sec. 31, T29N, R12W
San Juan County, New Mexico

