

UNITED STATES
DEPARTMENT OF THE INTERIOR
BUREAU OF LAND MANAGEMENT

30-045-29057

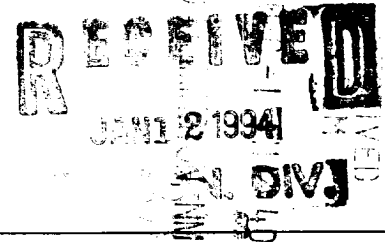
APPLICATION FOR PERMIT TO DRILL, DEEPEN, OR PLUG BACK

1a. TYPE of WORK DRILL <input checked="" type="checkbox"/> DEEPEN <input type="checkbox"/> PLUG BACK <input type="checkbox"/>				5. LEASE DESIGNATION NM03526
b. TYPE of WELL OIL WELL <input type="checkbox"/> GAS WELL <input checked="" type="checkbox"/> OTHER <input type="checkbox"/> SINGLE ZONE <input checked="" type="checkbox"/> MULTIPLE ZONE <input type="checkbox"/>				6. INDIAN, ALLOTTEE, TRIBE NAME
2. NAME of OPERATOR BHP Petroleum (Americas), Inc.				7. UNIT AGREEMENT NAME GALLEGOS CANYON UNIT
3. ADDRESS of OPERATOR P.O. Box 977 Farmington, NM 87499				8. FARM OR LEASE NAME GALLEGOS CANYON UNIT 2038
4. LOCATION of WELL 885' FSL & 1450' FWL				9. WELL NO. 519
14. DISTANCE IN MILES and DIRECTION from NEAREST TOWN 2.8 miles southeast of Farmington, NM				10. FIELD and POOL or WILDCAT Pictured Cliffs 79680
15. DISTANCE from PROPOSED LOCATION to NEAREST PROPERTY or LEASE LINE, Ft. 885'				11. SEC., T., R., M., or BLK Sec. 21, T29N, R12W, NMPM
16. NO. of ACRES in LEASE 160 (e)		17. NO. of ACRES ASSIGNED to WELL 160.30		12. COUNTY or PARISH San Juan
18. DISTANCE from PROPOSED LOCATION to NEAREST WELL, DRILLING, COMPLETED, or APPLIED FOR, ON THIS LEASE, Ft. +/- 300'		19. PROPOSED DEPTH 1549'		13. STATE NM
21. ELEVATIONS (Show DF, RT, GR, etc.) 5410' GR				22. APPROX. DATE WORK WILL START As soon as approved
23. PROPOSED CASING and CEMENTING PROGRAM				
SIZE of HOLE	SIZE of CASING	WEIGHT per FOOT	SETTING DEPTH	
8 3/4"	7"	20#K-55	130'	35 sx (41 cu ft) circ to surface
6 1/4"	4 1/2"	10.5#K-55	1549'	195 sx (242 cu ft) circ to surface

BHP Petroleum (Americas), Inc. proposes to spud in the Nacimiento Formation. Will drill an 8-3/4" hole to a TD of 130'. Run and cement surface casing with cement returns to surface. WOC 12 hours. Test casing to 2000 psi for 30 minutes. Drill a 6-1/4" hole to TD of 1549' using fresh water mud. No abnormal pressures or poisonous gases are anticipated. Adequate weight material will be on location to control flows from the Farmington sands. Run logs at TD. Run and cement production casing with cement returns to surface. WOC 12 hrs. Move out drilling rig and move in completion unit. Pressure test to 2500 psi for 30 minutes prior to perforating. Run cased hole correlation logs. Perforate Pictured Cliffs and stimulate using a fresh water based gel or foam system.

30' of new, on lease, access road BLM Row is applied for via this APD.

Surface ownership is BLM.



24. SIGNED: Jared Lowery TITLE: Operations Superintendent DATE: 11/29/93

(This space for Federal or State office use)

PERMIT NO. _____ APPROVAL DATE _____

APPROVED BY _____ TITLE _____ DATE _____

CONDITIONS of APPROVAL, IF ANY:

AMOC

DISTRICT MANAGER

APPROVED
AS AMENDED
JAN 07 1994

OIL CONSERVATION DIVISION

P.O. Box 2088
Santa Fe, New Mexico 87504-2088

DISTRICT I
P.O. Box 1980, Hobbs, NM 88240

DISTRICT II
P.O. Drawer DD, Artesia, NM 88210

DISTRICT III
1000 Rio Brazos Rd., Aztec, NM 87410

WELL LOCATION AND ACREAGE DEDICATION PLAT

All Distances must be from the outer boundaries of the section

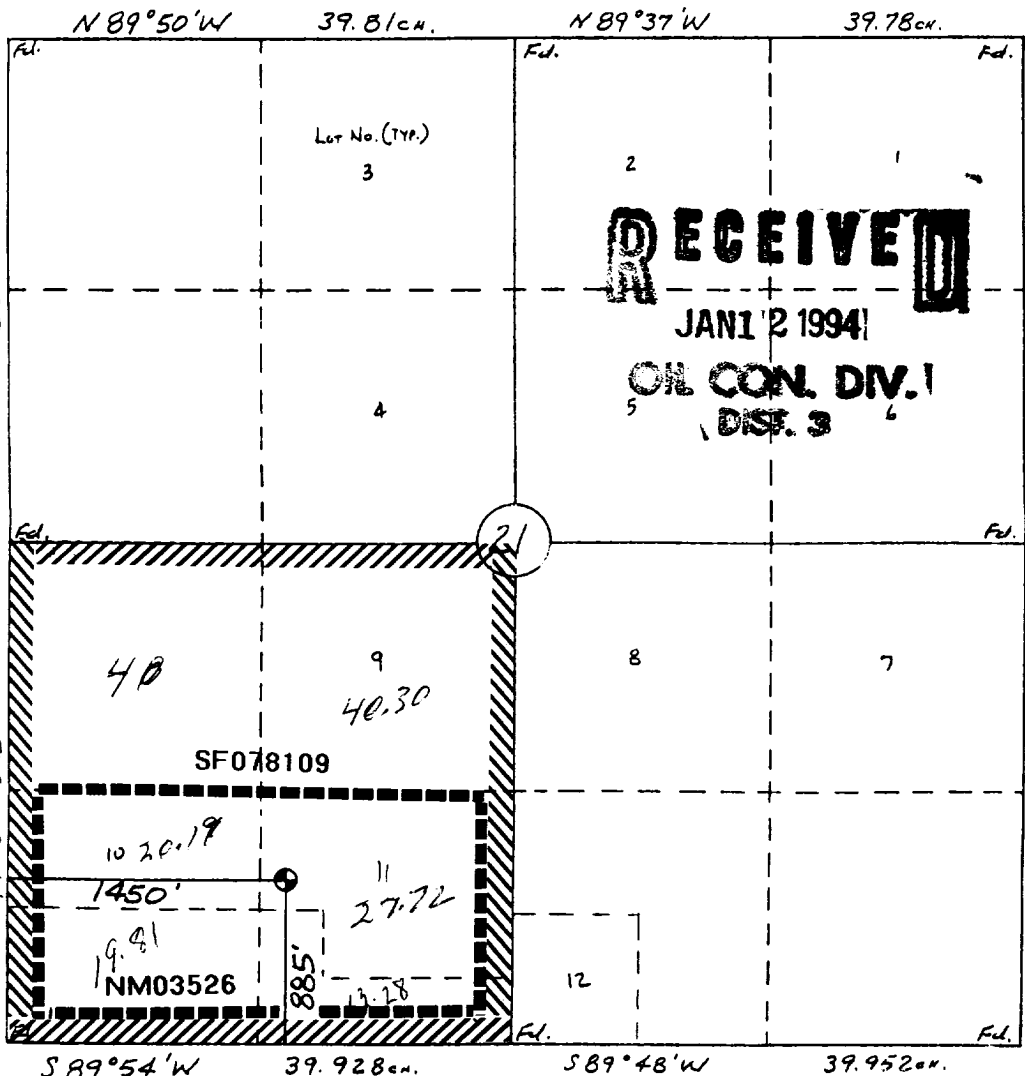
Operator BHP PETROLEUM (AMERICAS) INC.			Lease GALLEGOS CANYON UNIT		Well No. 519
Unit Letter N	Section 21	Township 29 N	Range 12 W	County San Juan	
Actual Footage Location of Well: 885 feet from the South line and 1450 feet from the West line					
Ground level Elev. 5410	Producing Formation PICTURED CLIFF		Pool WEST KUTZ PICTURED CLIFF		Dedicated Acreage: 16.30 Acres

- Outline the acreage dedicated to the subject well by colored pencil or hatchure marks on the plat below.
- If more than one lease is dedicated to the well, outline each and identify the ownership thereof (both as to working interest and royalty).
- If more than one lease of different ownership is dedicated to the well, have the interest of all owners been consolidated by communitization, unitization, force-pooling, etc.?
☒ Yes ☐ No If answer is "yes" type of consolidation **UNITIZATION**

If answer is "no" list the owners and tract descriptions which have actually been consolidated. (Use reverse side of this form if necessary.)

No allowable will be assigned to the well until all interests have been consolidated (by communitization, unitization, forced-pooling, or otherwise) or until a non-standard unit, eliminating such interest, has been approved by the Division.

0 330 660 990 1320 1650 1980 2310 2640 2000 1500 1000 500 0



OPERATOR CERTIFICATION

I hereby certify that the information contained herein is true and complete to the best of my knowledge and belief.

Signature

Printed Name

FRED LOWERY

Position

OPERATIONS SUPT.

Company

BHP PETROLEUM

Date

11-4-93

SURVEYOR CERTIFICATION

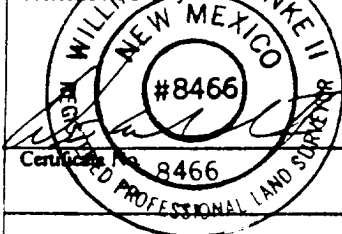
I hereby certify that the well location shown on this plat was plotted from field notes of actual surveys made by me or under my supervision, and that the same is true and correct to the best of my knowledge and belief.

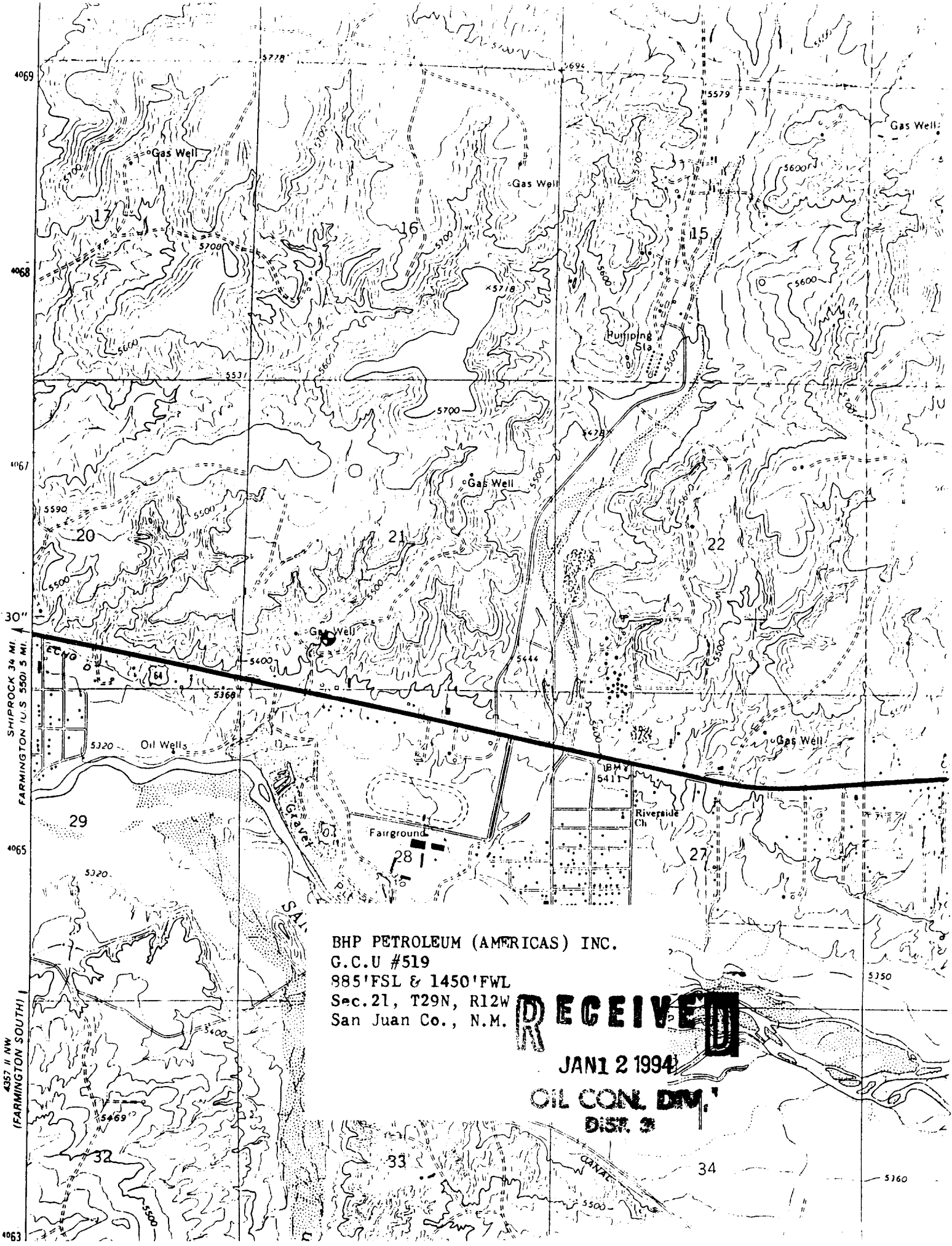
1 Nov., 1993

Date Surveyed

William E. Mahnke II

Signature of Seal of Professional Surveyor





BHP PETROLEUM (AMERICAS) INC.
G.C.U #519
985'FSL & 1450'FWL
Sec.21, T29N, R12W
San Juan Co., N.M.

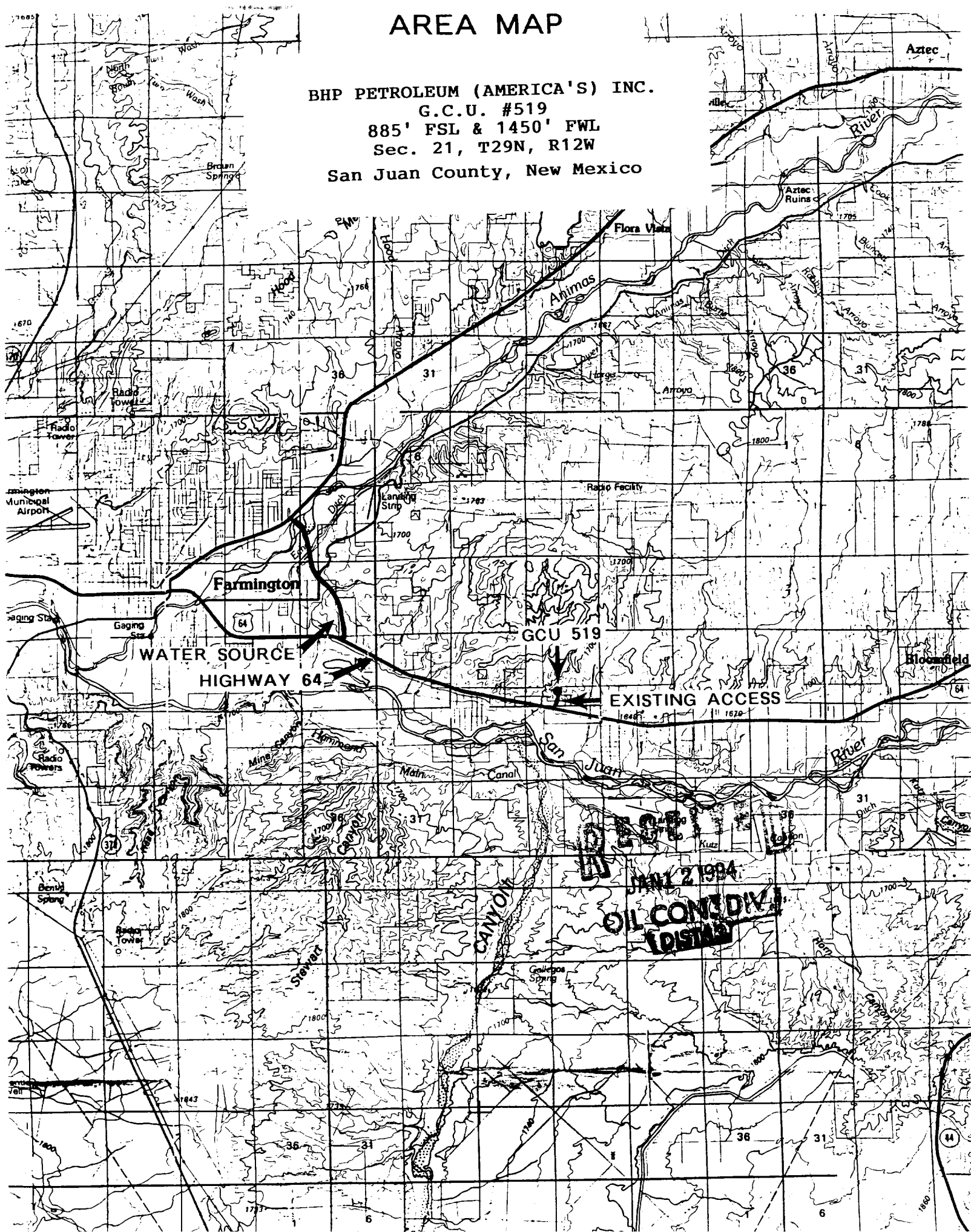
RECEIVED

JAN 12 1994

OIL CON. DIV.
DIST. 3

AREA MAP

BHP PETROLEUM (AMERICA'S) INC.
G.C.U. #519
885' FSL & 1450' FWL
Sec. 21, T29N, R12W
San Juan County, New Mexico



RESTRICTED
JAN 2 1984
OIL CONSID DIV
FOSTER

