

UNITED STATES
DEPARTMENT OF THE INTERIOR
BUREAU OF LAND MANAGEMENT

APPLICATION FOR PERMIT TO DRILL, DEEPEN, OR PLUG BACK

1a. TYPE of WORK DRILL <input checked="" type="checkbox"/> DEEPEN <input type="checkbox"/> PLUG BACK <input type="checkbox"/>				5. LEASE DESIGNINATION SF080600	
b. TYPE of WELL OIL WELL <input type="checkbox"/> GAS WELL <input checked="" type="checkbox"/> OTHER <input type="checkbox"/> SINGLE ZONE <input checked="" type="checkbox"/> MULTIPLE ZONE <input type="checkbox"/>				6. INDIAN, ALLOTTEE, TRIBE NAME	
2. NAME of OPERATOR BHP Petroleum (Americas), Inc.				7. UNIT AGREEMENT NAME GALLEGOS CANYON UNIT	
3. ADDRESS of OPERATOR P.O. Box 977 Farmington, NM 87499				8. FARM OR LEASE NAME GALLEGOS CANYON UNIT	
4. LOCATION of WELL 1187' FSL & 945' FWL				9. WELL NO. 538	
14. DISTANCE IN MILES and DIRECTION from NEAREST TOWN 1.6 miles east of Farmington, NM				10. FIELD and POOL or WILDCAT Pictured Cliffs	
15. DISTANCE from PROPOSED LOCATION to NEAREST PROPERTY or LEASE LINE, Ft. 945'				11. SEC., T., R., M., or BLK Sec. 17, T29N, R12W, NMPM	
16. NO. of ACRES in LEASE 160 (e)		17. NO. of ACRES ASSIGNED to WELL 156.92		12. COUNTY or PARISH San Juan	
18. DISTANCE from PROPOSED LOCATION to NEAREST WELL, DRILLING COMPLETED, or APPLIED FOR, ON THIS LEASE, Ft. +/- 150'		19. PROPOSED DEPTH 1685'		13. STATE NM	
21. ELEVATIONS (Show DF, RT, GR, etc.) 5543' GR				22. APPROX. DATE WORK WILL START As soon as approved	
23. PROPOSED CASING and CEMENTING PROGRAM				20. ROTARY or CABLE TOOLS Rotary	
SIZE of HOLE	SIZE of CASING	WEIGHT per FOOT	SETTING DEPTH	QUANTITY of CEMENT	
8 3/4"	7"	20#K-55	130'	35 sx (41 cu ft) circ to surface	
6 1/4"	4 1/2"	10.5#K-55	1685'	215 sx (267 cu ft) circ to surface	

BHP Petroleum (Americas), Inc. proposes to spud in the Nacimiento Formation. Will drill an 8-3/4" hole to a TD of 130'. Run and cement surface casing with cement returns to surface. WOC 12 hours. Test casing to 2000 psi for 30 minutes. Drill a 6-1/4" hole to TD of 1685' using fresh water mud. No abnormal pressures or poisonous gases are anticipated. Adequate weight material will be on location to control flows from the Farmington sands. Run logs at TD. Run and cement production casing with cement returns to surface. WOC 12 hrs. Move out drilling rig and move in completion unit. Pressure test to 2500 psi for 30 minutes prior to perforating. Run cased hole correlation logs. Perforate Pictured Cliffs and stimulate using a fresh water based gel or foam system.

Surface ownership is Fee.

RECEIVED
JAN 26 1994
OIL CON. DIV
DIST. 3

24. SIGNED: BREN LOWERY TITLE: Operations Superintendent DATE: 11/29/93

(This space for Federal or State office use)

PERMIT NO. _____ APPROVAL DATE _____
APPROVED BY _____ TITLE _____ DATE _____
CONDITIONS of APPROVAL, IF ANY: _____

APPROVED
AS AMENDED

JAN 20 1994
DISTRICT MANAGER

U.S. AIR FORCE
OFFICE OF THE
JOINT CHIEFS OF STAFF

WASHINGTON, D.C.

U.S. AIR FORCE

1950

U.S. AIR FORCE
OFFICE OF THE
JOINT CHIEFS OF STAFF

WASHINGTON, D.C.

U.S. AIR FORCE

1950

OIL CONSERVATION DIVISION

P.O. Box 2088

Santa Fe, New Mexico 87504-2088

DISTRICT 1

P.O. Box 1980, Hobbs, NM 88240

DISTRICT II

P.O. Drawer DD, Artesia, NM 88210

DISTRICT III

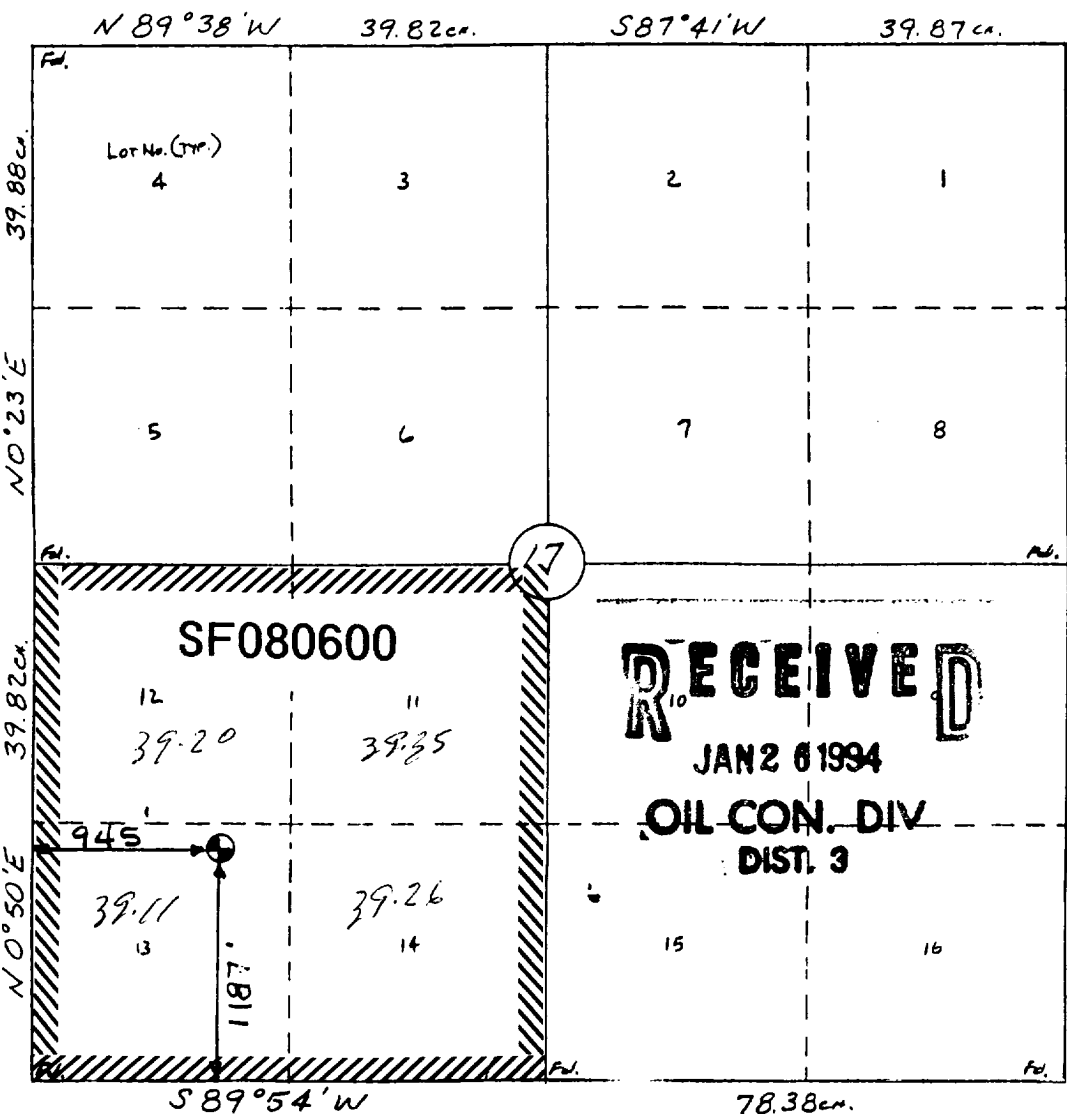
1000 Rio Brazos Rd., Aztec, NM 87410

WELL LOCATION AND ACREAGE DEDICATION PLAT

All Distances must be from the outer boundaries of the section

Operator BHP PETROLEUM (AMERICAS) INC.		Lease GALLEGOS CANYON UNIT		Well No 538
Unit Letter M	Section 17	Township 29 N	Range 12 W NMPM	County San Juan
Actual Footage Location of Well: 1187 feet from the South line and 945 feet from the West line				
Ground level Elev. 5543	Producing Formation PICTURED CLIFF	Pool WEST KUTZ PICTURED CLIFF	Dedicated Acreage: 156.92 Acres	

1. Outline the acreage dedicated to the subject well by colored pencil or hatchure marks on the plat below.
2. If more than one lease is dedicated to the well, outline each and identify the ownership thereof (both as to working interest and royalty).
3. If more than one lease of different ownership is dedicated to the well, have the interest of all owners been consolidated by communitization, unitization, force-pooling, etc.?
☐ Yes ☐ No If answer is "yes" type of consolidation _____
- If answer is "no" list the owners and tract descriptions which have actually been consolidated. (Use reverse side of this form if necessary.) _____
- No allowable well be assigned to the well until all interests have been consolidated (by communitization, unitization, forced-pooling, or otherwise) or until a non-standard unit, eliminating such interest, has been approved by the Division.



OPERATOR CERTIFICATION

I hereby certify that the information contained herein is true and complete to the best of my knowledge and belief.

Signature _____

Printed Name

FRED LOWERY

Position

OPERATION SUPT.

Company

BHP PETROLEUM

Date _____

11-04-93

SURVEYOR CERTIFICATION

I hereby certify that the well location shown on this plat was plotted from field notes of actual surveys made by me or under my supervision, and that the same is true and correct to the best of my knowledge and belief.

22 Oct., 1993

Date Surveyed _____

William E. Mahnke II

Signature & Seal of Professional Surveyor

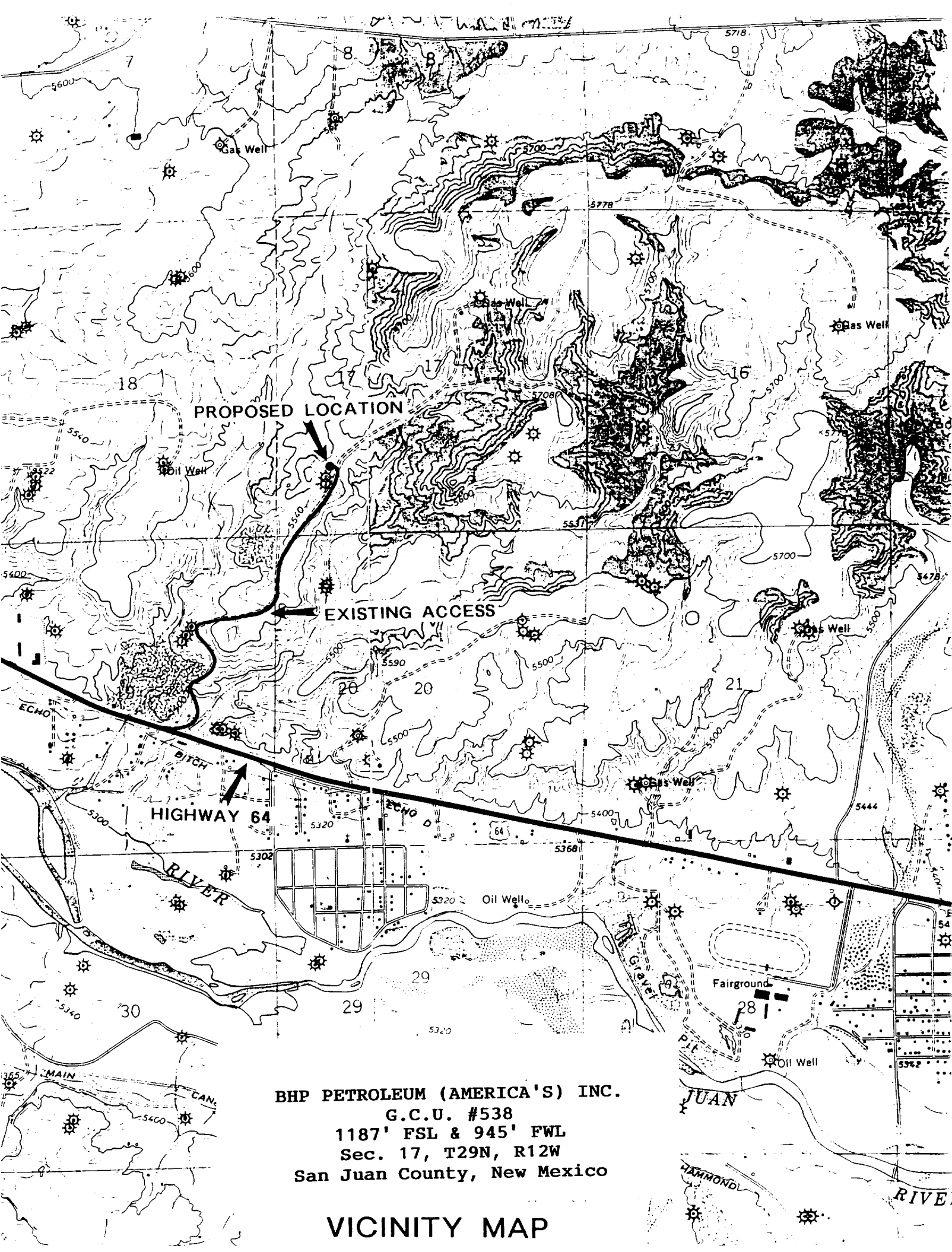
WILLIAM

WILEY

REC-3

Certificate No. 84

ERED PR



BHP PETROLEUM (AMERICA'S) INC.
G.C.U. #538
1187' FSL & 945' FWL
Sec. 17, T29N, R12W
San Juan County, New Mexico

VICINITY MAP