

UNITED STATES
DEPARTMENT OF THE INTERIOR
BUREAU OF LAND MANAGEMENT

APPLICATION FOR PERMIT TO DRILL, DEEPEN, OR PLUG BACK

1a. TYPE of WORK

DRILL ☒

DEEPEN ☐

PLUG BACK ☐

b. TYPE of WELL

OIL WELL ☐

GAS WELL ☒

OTHER

SINGLE ZONE ☒

MULTIPLE ZONE ☐

2. NAME of OPERATOR

BHP Petroleum (Americas), Inc. *API: 30-045-29074*

3. ADDRESS of OPERATOR

P.O. Box 977 Farmington, NM 87499

4. LOCATION of WELL

1462' FNL & 1160' FEL

14. DISTANCE IN MILES and DIRECTION from NEAREST TOWN

2.1 miles southeast of Farmington, NM

5. LEASE DESIGNATION

SF080723

6. INDIAN, ALLOTTEE, TRIBE NAME

7. UNIT AGREEMENT NAME

GALLEGOS CANYON UNIT

8. FARM OR LEASE NAME

GALLEGOS CANYON UNIT *2038*

9. WELL NO.

539

10. FIELD and POOL or WILDCAT

Pictured Cliffs *29680*

11. SEC., T., R., M., or BLK

Sec. 20, T29N, R12W, NMPM

12. COUNTY or PARISH

San Juan

13. STATE

NM

15. DISTANCE from PROPOSED LOCATION to NEAREST PROPERTY or LEASE LINE, Ft.

1160'

16. NO. of ACRES in LEASE

520 (e)

17. NO. of ACRES ASSIGNED to WELL

158.02

18. DISTANCE from PROPOSED LOCATION to NEAREST WELL, DRILLING, COMPLETED, or APPLIED FOR, ON THIS LEASE, Ft.

+/- 125'

19. PROPOSED DEPTH

1734'

20. ROTARY or CABLE TOOLS

Rotary

21. ELEVATIONS (Show DF, RT, GR, etc.)

5613' GR

This action is subject to technical and procedural review pursuant to 43 CFR 3125.3 and appeal pursuant to 43 CFR 3125.4.

22. APPROX. DATE WORK WILL START

As soon as approved

23. PROPOSED CASING and CEMENTING PROGRAM

SIZE of HOLE	SIZE of CASING	WEIGHT per FOOT	SETTING DEPTH	QUANTITY of CEMENT
8 3/4"	7"	20#K-55	130'	35 sx (41 cu ft) circ to surface
6 1/4"	4 1/2"	10.5#K-55	1734'	220 sx (273 cu ft) circ to surface

BHP Petroleum (Americas), Inc. proposes to spud in the Nacimiento Formation. Will drill an 8-3/4" hole to a TD of 130'. Run and cement surface casing with cement returns to surface. WOC 12 hours. Test casing to 2000 psi for 30 minutes. Drill a 6-1/4" hole to TD of 1734' using fresh water mud. No abnormal pressures or poisonous gases are anticipated. Adequate weight material will be on location to control flows from the Farmington sands. Run logs at TD. Run and cement production casing with cement returns to surface. WOC 12 hrs. Move out drilling rig and move in completion unit. Pressure test to 2500 psi for 30 minutes prior to perforating. Run cased hole correlation logs. Perforate Pictured Cliffs and stimulate using a fresh water based gel or foam system.

Surface ownership is Fee.

RECEIVED

JAN 31 1994

OIL CON. DIV

DIST

24.

SIGNED:

John Lowrey

TITLE:

Operations Superintendent

DATE:

11/29/93

(This space for Federal or State office use)

PERMIT NO.

APPROVAL DATE

APPROVED BY

CONDITIONS of APPROVAL, IF ANY:

TITLE

DATE

JAN 27 1994

DISTRICT MANAGER

APPROVED
AS AMENDED

Submit to Appropriate
District Office
Site Lease - 4 copies
Fee Lease - 3 copies

State of New Mexico
Energy, Minerals and Natural Resources Department

Form C-102
Revised 1-1-89

OIL CONSERVATION DIVISION

DISTRICT I
P.O. Box 1980, Hobbs, NM 88240

P.O. Box 2088

Santa Fe, New Mexico 87504-2088

DISTRICT II
P.O. Drawer DD, Artesia, NM 88210

DISTRICT III
1000 Rio Brazos Rd., Aztec, NM 87410

WELL LOCATION AND ACREAGE DEDICATION PLAT

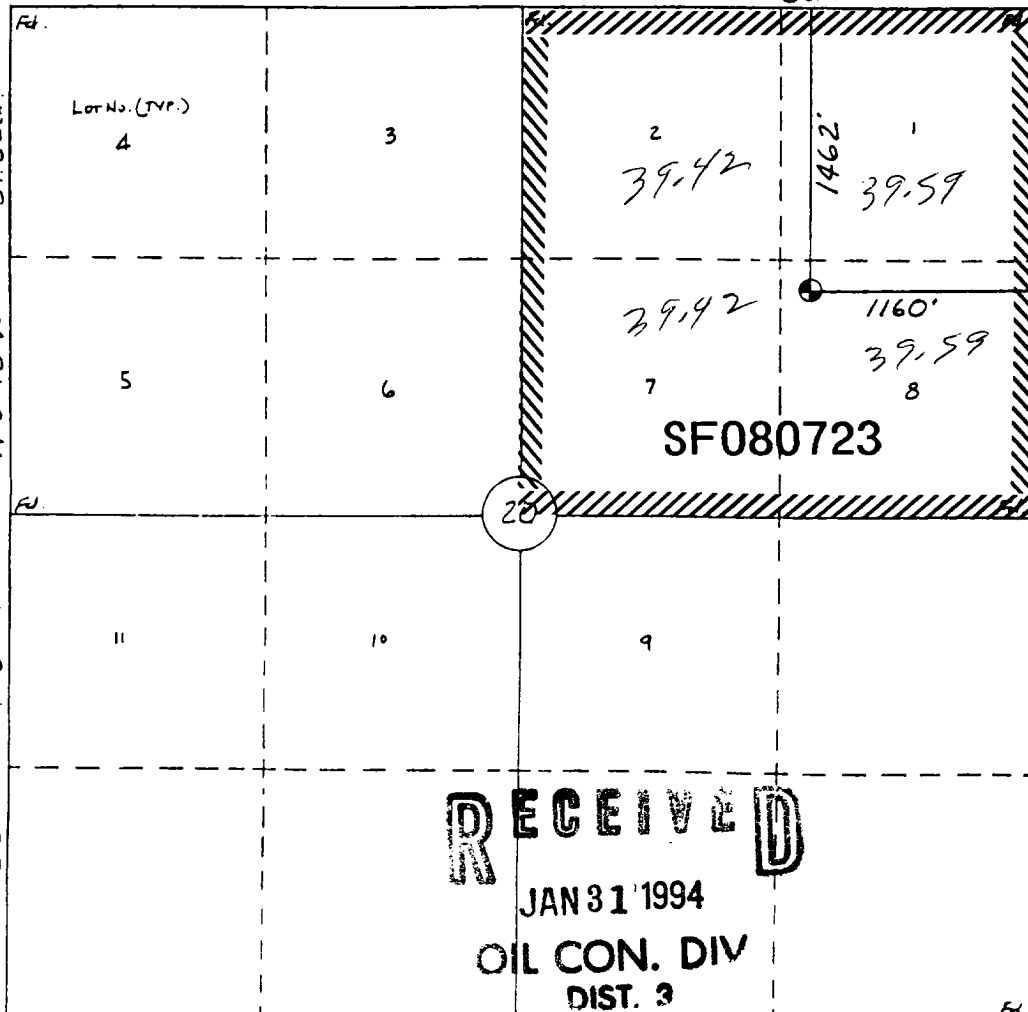
All Distances must be from the outer boundaries of the section

Operator BHP PETROLEUM (AMERICAS) INC.			Lease GALLEGOS CANYON UNIT		Well No. 539
Unit Letter H	Section 20	Township 29 N	Range 12 W	County San Juan	
Actual Footage Location of Well: 1462 feet from the North line and 1160 feet from the East line					
Ground level Elev. 5613	Producing Formation PICTURED CLIFF		Pool WEST KUTZ PICTURED CLIFF		Dedicated Acreage: 158.02 Acres
<p>1. Outline the acreage dedicated to the subject well by colored pencil or hatchure marks on the plat below.</p> <p>2. If more than one lease is dedicated to the well, outline each and identify the ownership thereof (both as to working interest and royalty).</p> <p>3. If more than one lease of different ownership is dedicated to the well, have the interest of all owners been consolidated by communitization, unitization, force-pooling, etc.? <input type="checkbox"/> Yes <input type="checkbox"/> No If answer is "yes" type of consolidation _____</p> <p>If answer is "no" list the owners and tract descriptions which have actually been consolidated. (Use reverse side of this form if necessary.) _____</p> <p>No allowable will be assigned to the well until all interests have been consolidated (by communitization, unitization, forced-pooling, or otherwise) or until a non-standard unit, eliminating such interest, has been approved by the Division.</p>					

0 330 660 990 1320 1650 1980 2310 2640 2000 1500 1000 500 0

S 89°54' W

78.38 ch.



OPERATOR CERTIFICATION

I hereby certify that the information contained herein is true and complete to the best of my knowledge and belief.

Signature

Printed Name
FRED LOWERY

Position
OPERATION SUPT.

Company
BHP PETROLEUM

Date
11-4-93

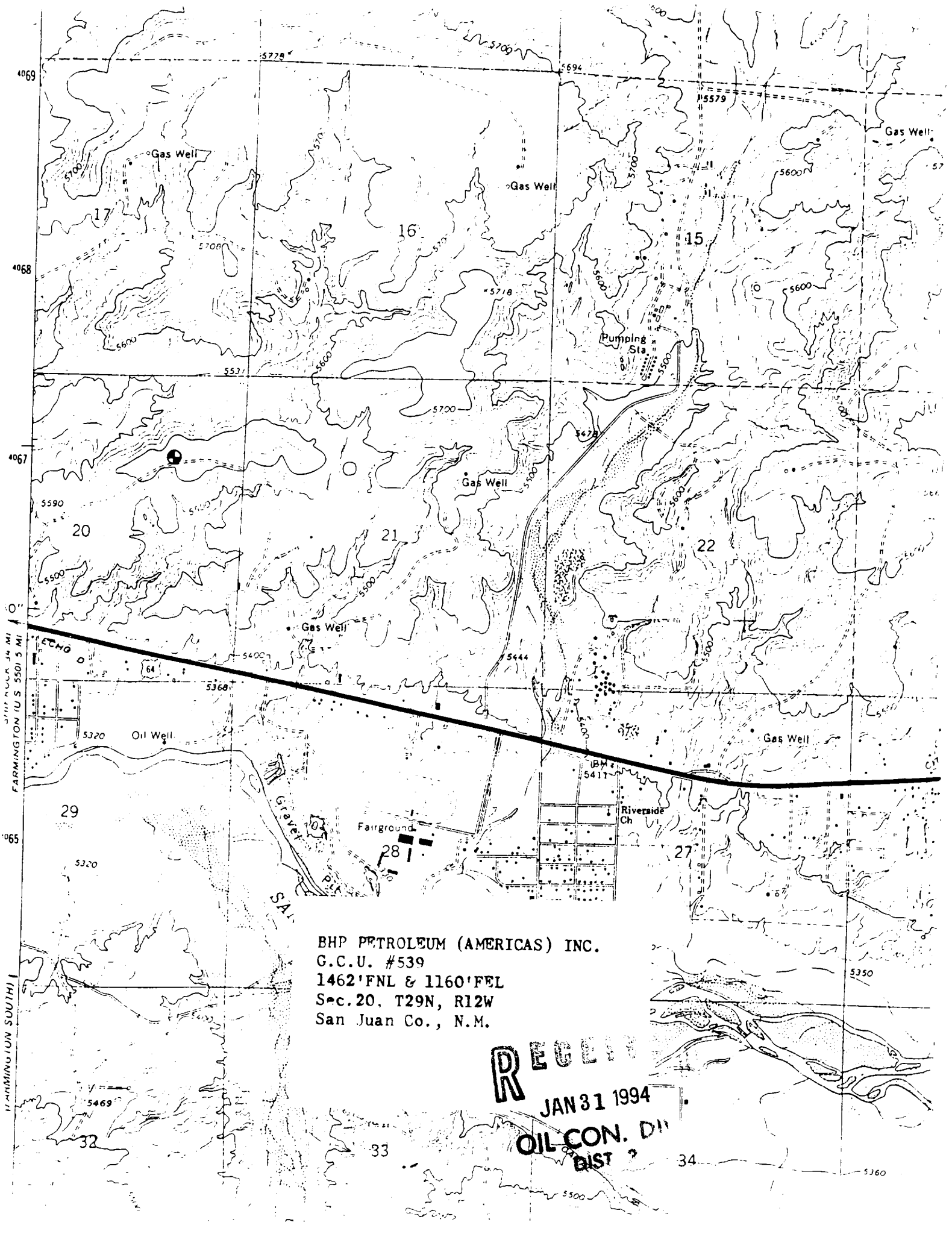
SURVEYOR CERTIFICATION

I hereby certify that the well location shown on this plat was plotted from field notes of actual surveys made by me or under my supervision, and that the same is true and correct to the best of my knowledge and belief.
14 Oct., 1993

Date Surveyed
William E. Mahnke II

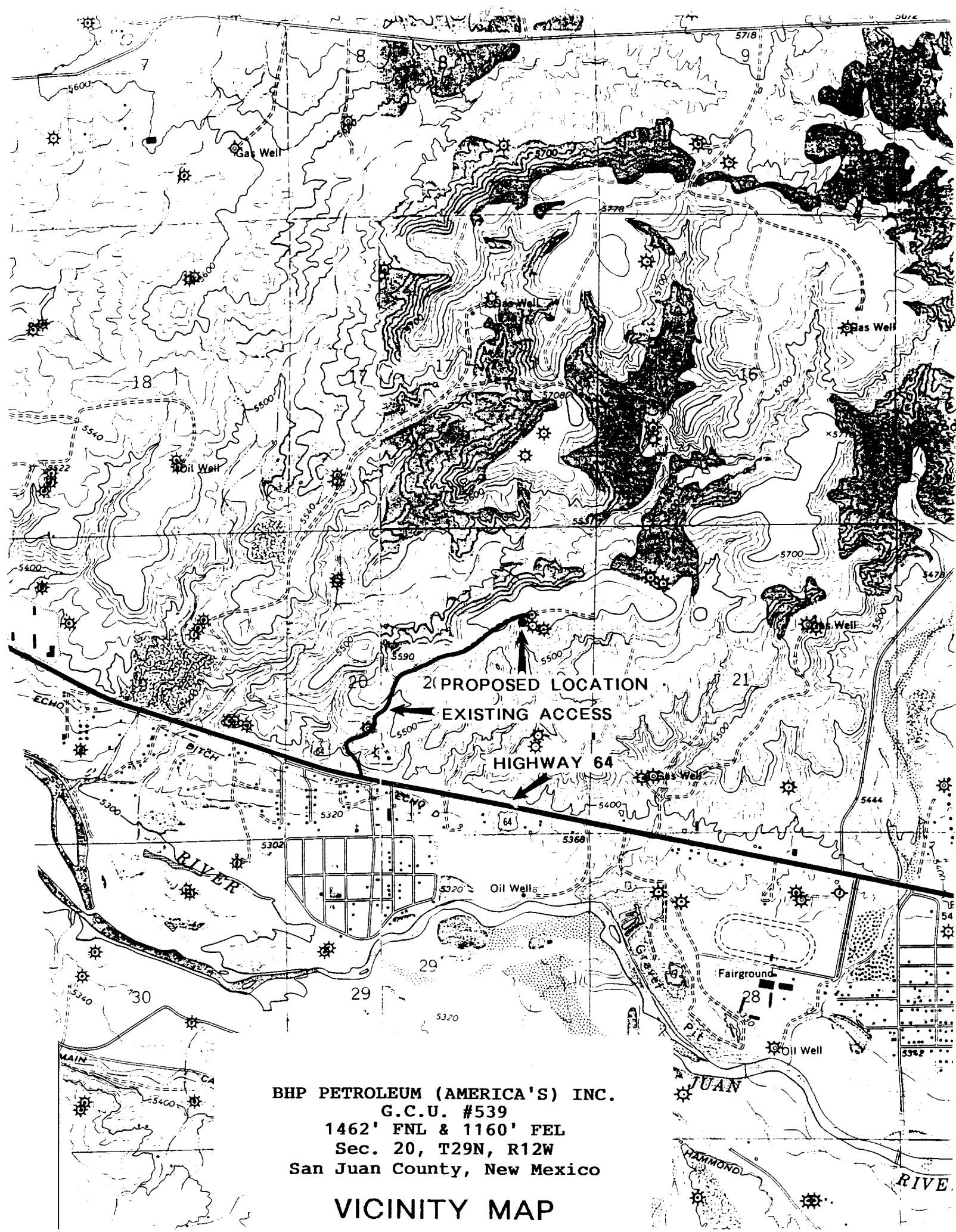
Signature & Seal of
Professional Surveyor





BHP PETROLEUM (AMERICAS) INC.
G.C.U. #539
1462'FNL & 1160'FEL
Sec. 20, T29N, R12W
San Juan Co., N.M.

RECEIVED
JAN 31 1994
OIL CON. DIST.



BHP PETROLEUM (AMERICA'S) INC.
G.C.U. #539
1462' FNL & 1160' FEL
Sec. 20, T29N, R12W
San Juan County, New Mexico

VICINITY MAP

