

District I  
PO Box 1980, Hobbs, NM 88241-1980  
District II  
811 South First, Artesia, NM 88210  
District III  
1000 Rio Brazos Rd., Aztec, NM 87410  
District IV  
2040 South Pacheco, Santa Fe, NM 87505

State of New Mexico  
Energy, Minerals & Natural Resources Department

OIL CONSERVATION DIVISION

2040 South Pacheco  
Santa Fe, NM 87505

Form C-10

Revised October 18, 1999

Instructions on back

Submit to Appropriate District Office

State Lease - 6 Copy

Fee Lease - 5 Copy



AMENDED REPORT

APPLICATION FOR PERMIT TO DRILL, RE-ENTER, DEEPEN, PLUG BACK, OR ADD A ZONE

<sup>1</sup> Operator Name and Address. <b>Merrion Oil &amp; Gas Corporation</b> 610 Reilly Avenue Farmington, New Mexico 87401		<sup>2</sup> OGRID Number 014634
<sup>4</sup> Property Code 22345		<sup>3</sup> API Number 30-045-29519
<sup>5</sup> Property Name <b>Boice Com</b>		<sup>6</sup> Well No. 1

<sup>7</sup> Surface Location

UL or lot no.	Section	Township	Range	Lot Idn	Feet from the	North/South line	Feet from the	East/West line	County
D	15	29N	13W		670 feet	North	1290'	West	San Juan

<sup>8</sup> Proposed Bottom Hole Location If Different From Surface

UL or lot no.	Section	Township	Range	Lot Idn	Feet from the	North/South line	Feet from the	East/West line	County
160									
<sup>9</sup> Proposed Pool 1 Eulcher Katz Pictured Cliffs					<sup>10</sup> Proposed Pool 2				

<sup>11</sup> Work Type Code N	<sup>12</sup> Well Type Code G	<sup>13</sup> Cable/Rotary Rotary	<sup>14</sup> Lease Type Code P	<sup>15</sup> Ground Level Elevation 5335'
<sup>16</sup> Multiple No	<sup>17</sup> Proposed Depth 1350' KB	<sup>18</sup> Formation Pictured Cliffs	<sup>19</sup> Contractor L&B Speed Drill	<sup>20</sup> Spud Date As Soon As Permitted

<sup>21</sup> Proposed Casing and Cement Program

Hole Size	Casing Size	Casing weight/foot	Setting Depth	Sacks of Cement	Estimated TOC
8-3/4"	7" J55	23 ppf	~120' KB	~30 sx (36 cuft)	Surface
6-1/4"	4-1/2" J55	10.5 ppf	~1350' KB	~113 sx (166 cuft)	Surface

<sup>22</sup> Describe the proposed program. If this application is to DEEPEN or PLUG BACK give the data on the present productive zone and proposed new productive zone. Describe the blowout prevention program, if any. Use additional sheets if necessary.

Merrion Oil & Gas proposes to drill 8<sup>3</sup>/<sub>4</sub>" hole with native mud to approx. 120' KB and set 7" 23# J55 surface casing, cement to surface with ~30 sx 'B' w/ 2% CaCl<sub>2</sub> (36 ft<sup>3</sup>). Will drill 6<sup>1</sup>/<sub>4</sub>" hole to TD @ approx. 1350' KB with low solids non-dispersed gel mud system. Run open hole surveys. If appears productive, will set 4<sup>1</sup>/<sub>2</sub>" 10.5 ppf J55 production casing from TD to surface. Will cement with 25 sx 'B' (30 ft<sup>3</sup>) lead slurry followed by 38 sx 'B' w/ 2% SMS (77 ft<sup>3</sup>) and tail in with 50 sx 'B' (59 ft<sup>3</sup>) cement to fill from total depth to surface. Top of cement should circulate to surface ( will adjust volumes based upon caliper log). If cement does not reach surface, a temperature log or cement bond log will be run to determine top of cement.

Will test Pictured Cliffs through perforated casing. Will fracture stimulate and put on for production test.

Drilling operations below surface casing will be conducted with a double ram type BOP in place, minimum working pressure 1000 psig.

This well is located within the City Limits of Farmington and a permit application has been filed with the City.

Formation tops: Kirtland - Surface, Fruitland - 809', Pictured Cliffs 1162'.

<sup>23</sup> I hereby certify that the information given above is true and complete to the best of my knowledge and belief.

Signature:

Printed name:

Steven S. Dunn

Title:

Drilling & Production Manager

Date:

January 22, 1998

Phone:

505-327-9801

OIL CONSERVATION DIVISION

Approved by:

Title:

DEPUTY OIL & GAS INSPECTOR, DIST. #3

Approval Date:

JAN 26 1998

Expiration Date:

JAN 26 1999

Conditions of Approval:

Attached ☐

HOLD C-104 FOR NSL

District I  
PO Box 1980, Hobbs, NM 88241-1980  
District II  
PO Drawer DD, Artesia, NM 88211-0719  
District III  
1000 Rio Brazos Rd., Aztec, NM 87410  
District IV  
PO Box 2088, Santa Fe, NM 87504-2088

State of New Mexico  
Energy, Minerals & Natural Resources Department

OIL CONSERVATION DIVISION  
PO Box 2088  
Santa Fe, NM 87504-2088

Form C-102  
Revised February 21, 1994  
Instructions on back  
Submit to Appropriate District Office  
State Lease - 4 Copies  
Fee Lease - 3 Copies

☐ AMENDED REPORT

WELL LOCATION AND ACREAGE DEDICATION PLAT

<sup>1</sup> APT Number 30-045-29519		<sup>2</sup> Pool Code 79680		<sup>3</sup> Pool Name WEST Euler Kutz Pictured Cliffs EXT	
<sup>4</sup> Property Code 22345		<sup>5</sup> Property Name Boice Com			<sup>6</sup> Well Number 1
<sup>7</sup> OGRID No. 014634		<sup>8</sup> Operator Name MERRION OIL & GAS			<sup>9</sup> Elevation 5335'

<sup>10</sup> Surface Location

UL or lot no.	Section	Township	Range	Lot Idn	Feet from the	North/South line	Feet from the	East/West line	County
D	15	29 N	13 W	NWNW	670	North	1290	West	San Juan

<sup>11</sup> Bottom Hole Location If Different From Surface

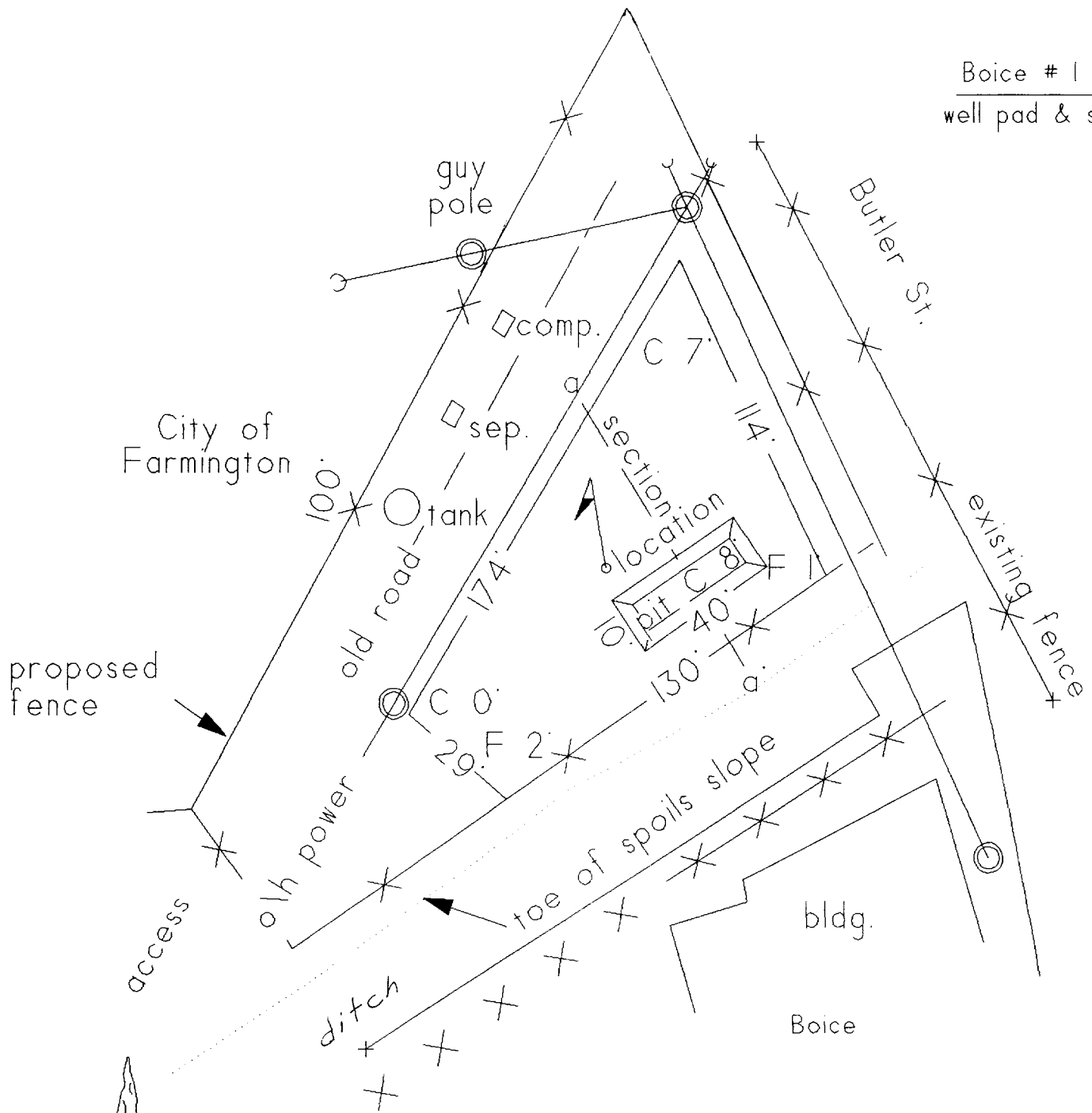
UL or lot no.	Section	Township	Range	Lot Idn	Feet from the	North/South line	Feet from the	East/West line	County

<sup>12</sup> Dedicated Acres 160	<sup>13</sup> Joint or Infill	<sup>14</sup> Consolidation Code	<sup>15</sup> Order No. In progress
--------------------------------------	-------------------------------	----------------------------------	--

NO ALLOWABLE WILL BE ASSIGNED TO THIS COMPLETION UNTIL ALL INTERESTS HAVE BEEN CONSOLIDATED  
OR A NON-STANDARD UNIT HAS BEEN APPROVED BY THE DIVISION

	<p>RECEIVED JAN 20 1998</p> <p>OIL CON. DIV. DIST. 3</p>	<p><sup>17</sup> OPERATOR CERTIFICATION</p> <p>I hereby certify that the information contained herein is true and complete to the best of my knowledge and belief</p> <p><i>Steven S. Dunn</i> Signature Steven S. Dunn Printed Name Drlg &amp; Prod Manager Title 1/22/98 Date</p>
		<p><sup>18</sup> SURVEYOR CERTIFICATION</p> <p>I hereby certify that the well location shown on this plat was plotted from field notes of actual surveys made by me or under my supervision, and that the same is true and correct to the best of my belief.</p> <p><i>Gerard B. Huddleston</i> Signature Gerard B. Huddleston Printed Name 6844 Date of Survey 6844 Seal of Professional Surveyor REGISTERED LAND SURVEYOR 6844</p> <p>Certificate Number</p>

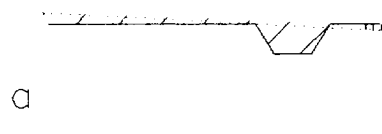
Boice # 1  
well pad & section



0' 50'  
Scale 1" = 50'

cut

till



section