

UNITED STATES
DEPARTMENT OF THE INTERIOR
BUREAU OF LAND MANAGEMENT

APPLICATION FOR PERMIT TO DRILL OR DEEPEN

1a. TYPE OF WORK

DRILL ☒

DEEPEN ☐

b. TYPE OF WELL

OIL WELL ☐

GAS WELL ☒

OTHER

SINGLE ZONE ☒

MULTIPLE ZONE ☐

2. NAME OF OPERATOR

Conoco Inc. 5073

a. ADDRESS AND TELEPHONE NO

10 Desta Dr. Ste 430E, Midland, Tx. 79705-4500

915-686-5794

4. LOCATION OF WELL (Report location clearly and in accordance with any State requirements *)

At surface

1450' FNL & 1505' FWL

At proposed prod. zone

1450' FNL & 1505' FWL

14. DISTANCE IN MILES AND DIRECTION FROM NEAREST TOWN OR POST OFFICE*

5. DISTANCE FROM PROPOSED*

LOCATION TO NEAREST
PROPERTY OR LEASE LINE, FT.
(Also to nearest drlg. unit line, if Any)

16 NO OF ACRES IN LEASE

17. NO. OF ACRES ASSIGNED
TO THIS WELL

8. DISTANCE FROM PROPOSED LOCATION*

TO NEAREST WELL, DRILLING, COMPLETED,
OR APPLIED FOR, ON THIS LEASE, FT.

19. PROPOSED DEPTH

20. ROTARY OR CABLE TOOLS

21. ELEVATIONS (Show whether DF, RT, GR, etc)

5933' GR

This action is subject to technical and
procedural review pursuant to 43 CFR 3165.3
and appeal pursuant to 43 CFR 3165.4.

22. APPROX. DATE WORK WILL START*

4/15/98

23

PROPOSED CASING AND CEMENTING PROGRAM

SIZE OF HOLE	GRADE, SIZE OF CASING	WEIGHT PER FOOT	SETTING DEPTH	QUANTITY OF CEMENT
12-1/4"	K-55, 9-5/8"	36#	250'	135 sxs, circ.
8-3/4"	K-55, 7"	23#	2618'	320 sxs, circ.
6-1/4"	K-55, 4-1/2"	9.5#	6864'	460 sxs, toc @ 2450'

It is proposed to drill a vertical wellbore to the Blanco Mesaverde and Basin Dakota Pools. NOS was filed 2/21/98. The well will be drilled and equipped according to the following additional attachments:

1. Well Location & Acreage Dedication Plat (C-102).
2. Proposed Well Plan Outline.
3. Cementing Plan.
4. Blowout Preventer Hookup.
5. Surface Use Plan with Production Facility Layout.
6. Pipeline survey plat.

DRILLING OPERATIONS AUTHORIZED ARE
SUBJECT TO COMPLIANCE WITH ATTACHED
"GENERAL REQUIREMENTS"

RECEIVED
MAR 25 1998

OIL CON. DIV.
DIST. 3

This application includes ROW's for the well pad, access road and pipeline.

IN ABOVE SPACE DESCRIBE PROPOSED PROGRAM: If proposal is to deepen give data on present productive zone and proposed new productive zone. If proposal is to drill or deepen directionally, give pertinent data on subsurface locations and measured and true vertical depths. Give blowout preventer program, if any.

24.

SIGNED

Mike L. Mankin

TITLE

Mike L. Mankin

Right-of-Way Agent

DATE

March 3, 1998

(This space for Federal or State office use)

PERMIT NO

APPROVAL DATE

MAR 23 1998

Application approval does not warrant or certify that the applicant holds legal or equitable title to those rights in the subject lease which would entitle the applicant to conduct operations thereon.

CONDITIONS OF APPROVAL, IF ANY:

MAR 23 1998

APPROVED BY

/s/ Duane W. Spencer

TITLE

DATE

MAR 23 1998

*See Instructions On Reverse Side

Title 18 U.S.C. Section 1001, makes it a crime for any person knowingly and willfully to make to any department or agency of the United States any false, fictitious or fraudulent statements or representations as to any matter within its jurisdiction

NMOCH

District I
PO Box 1980, Hobbs, NM 88241-1980

State of New Mexico
Energy, Minerals & Natural Resources Department

Form O-102
Revised February 21, 1994

District II
PO Drawer CD, Artesia, NM 88211-0719

OIL CONSERVATION DIVISION

Submit to Appropriate District Office
State Lease - 4 Copies
Fee Lease - 3 Copies

District III
1000 Rio Brazos Rd., Aztec, NM 87410

PO Box 2088
Santa Fe, NM 87504-2088

District IV
PO Box 2088, Santa Fe, NM 87504-2088

☐ AMENDED REPORT

WELL LOCATION AND ACREAGE DEDICATION PLAT

API Number 30-045-99563	Pool Code 72319 / 71599	Pool Name BLANCO MESAVERDE / BASIN DAKOTA
Property Code 22398	Property Name LUDWICK LS	Well Number 18M
OGRID No. 005073	Operator Name CONOCO, INC.	Elevation 5933

10 Surface Location

UL or lot no. F	Section 6	Township 29N	Range 10W	Lot Idn	Feet from the 1450	North/South line NORTH	Feet from the 1505	East/West line WEST	County SAN JUAN
---------------------------	---------------------	------------------------	---------------------	---------	------------------------------	----------------------------------	------------------------------	-------------------------------	---------------------------

11 Bottom Hole Location If Different From Surface

UL or lot no.	Section	Township	Range	Lot Idn	Feet from the	North/South line	Feet from the	East/West line	County
---------------	---------	----------	-------	---------	---------------	------------------	---------------	----------------	--------

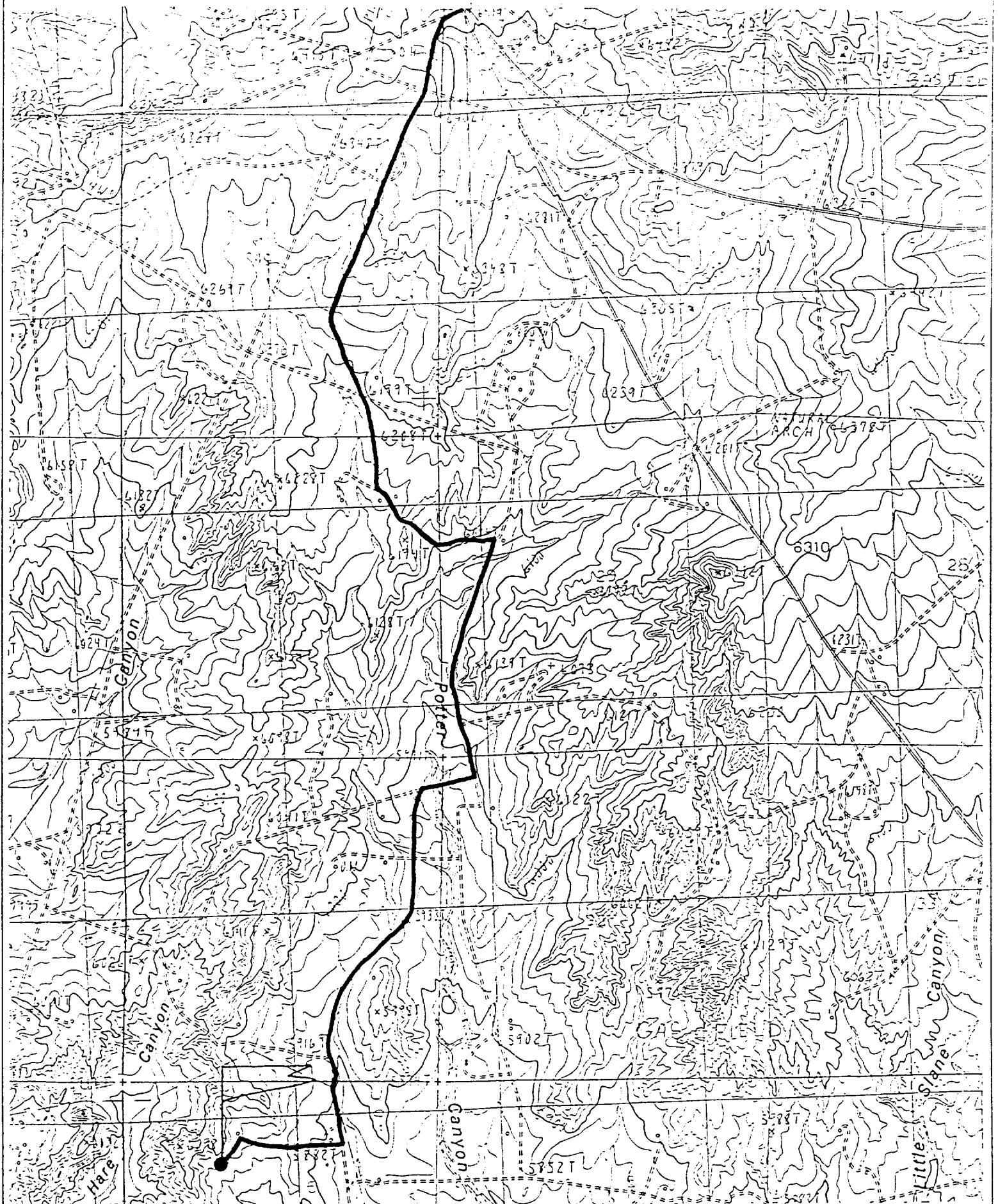
12 Dedicated Acres 294.07 320	13 Joint or Infill	14 Consolidation Code	15 Order No.
---	--------------------	-----------------------	--------------

NO ALLOWABLE WILL BE ASSIGNED TO THIS COMPLETION UNTIL ALL INTERESTS HAVE BEEN CONSOLIDATED
ON A MINOR STANDARD UNIT HAS BEEN APPROVED BY THE DIVISION

1156.32'	1284.36'	2644.62'	7 OPERATOR CERTIFICATION I hereby certify that the information contained herein is true and complete to the best of my knowledge and belief	
1296.24'	1450'	9/8 2K	8	Signature <i>Mike L. Mankin</i> Mike L. Mankin Right-Of-Way Agent Date 2-2-98
1505'	12	13	14	
1295.58'	1229.58'	1450'	15	
2600.40'	19	18	22	8 SURVEYOR CERTIFICATION I hereby certify that the well location shown on this plat was plotted from field notes of actual surveys made by me or under my supervision, and that the same is true and correct to the best of my belief.
1094.94'	1203.18'	2694.78'	23	NEALE C. EDWARDS NEW MEXICO 6887 FEBRUARY 13, 1998 Date of Survey Signature and Seal of Professional Surveyor 6887 Certificate Number

CONOCO, INC. LUDWICK LS #18M

1450' FNL & 1505' FWL SECTION 6, T29N, R10W
N.M.P.M., SAN JUAN COUNTY, NEW MEXICO



PROPOSED WELL PLAN OUTLINE

WELL NAME: LUDWICK LS No. 18M

EST. GL = 5933

LOCATION: SEC 8, T-29N, R-10W, SAN JUAN CO., NM

EST. KB = 5944

TVD IN 1000 MD	FORMATION TOPS & TYPE	DRILLING PROBLEMS	TYPE OF FORMATION EVALUATION	HOLE SIZE	CASING		FRAC GRAD. psi/ft	FORMATION PRESSURE PSI	MUD		DAYS
					SIZE	DEPTH			WT	TYPE	
0				12-1/4"	9-5/8" 38# K-55 ST&C @ 250'			NORMAL	8.4 - 8.8# SPUD MUD		1
				8-3/4"	CIRC CMT				8.4 - 9.0# GEL/WATER		
1	OJAM @ 1015' KRLD @ 1157'	POSSIBLE WATERFLOW								MAINTAIN MW AS LOW AS POSSIBLE CONTROL FLUID LOSS PRIOR TO OJAM	
2	FRLO @ 1975' PCCF @ 2318'	POSSIBLE GAS FLOW POSSIBLE LOST RETURNS POSSIBLE DIFFERENTIAL STICKING		8-3/4"	7" 23# K-55 LTC @ 2618' (special dnft)						5
3	CHRA			6-1/4"	CIRC CMT					AIR/AIR MIST/GAS	
4	CLF/MV @ 4032' MDW @ 4131'	PROBABLE LOST RETURNS IF FLUID IN HOLE					0.5	475 PSI 563 PSI			
5	PTLK @ 4629'										
6	GLLP @ 5842'										
7	GRHN @ 6580' GRAS DKOT @ 6754'	POSSIBLE WATERFLOW POSSIBLE OVERPRESSURE IN DEEP DAKOTA	CASED HOLE LOGS	6-1/4"	4-1/2" 9.5# K-55 LTC @ 6884'		0.5	715 PSI		AIR/AIR MIST/GAS	10
	T.O. @ 6864'				TOC @ 2450'			BHT = 175 deg F			
	NOTE: PERMIT TO 7154'										

DATE 02/26/98

APPROVALS:

09:47 AM

PREPARED:

Ricky Joyce/Ted Kelly
DRILLING ENGINEER

RES. ENGINEER

PROD. ENGINEER

Cly Bins
GEOLOGIST

DRILLING MGR.