

DISTRICT I  
PO Box 1980, Hobbs, NM 88240  
DISTRICT II  
PO Box DD, Artesia, NM 88210  
DISTRICT III  
1000 Rio Brazos Rd., Aztec, NM 87410

DISTRICT IV  
2040 South Pacheco, Santa Fe, NM 87505

# ORIGINAL

## OIL CONSERVATION DIVISION

P.O. Box 2088  
Santa Fe, NM 87504-2088

Form C-101

Revised February 21, 1994

Instructions on back

Submit to Appropriate District Office

State Lease - 6 Copies

Fee Lease - 5 Copies

RECEIVED  
MAY - 7 1999

AMENDED REPORT

### APPLICATION FOR PERMIT TO DRILL, RE-ENTER, DEPEND, PLUGBACK, OR ADD A ZONE

#### 1. OPERATOR NAME AND ADDRESS

Cross Timbers Operating Company Attn: Thomas W. DeLong  
2700 Farmington Avenue, Bldg. K, Ste. 1 Farmington, NM 87401 505-324-1090

LOG NUMBER

167667

API NUMBER

30-045-29922

#### 4. PROPERTY CODE

022669

#### 5. PROPERTY NAME

State Gas Com "BG"

#### 6. WELL NUMBER

1A

#### 7. SURFACE LOCATION

U/I or lot no.	Section	Township	Range	Lot Idn	Feet from the	North/South line	Feet from the	East/West line	County
G	2	29N	10W		1965'	North	1600'	East	San Juan

#### 8. PROPOSED BOTTOM HOLE LOCATION IF DIFFERENT FROM SURFACE

U/I or lot no.	Section	Township	Range	Lot Idn	Feet from the	North/South line	Feet from the	East/West line	County

#### 9. Proposed Pool 1

Basin Dakota (71599)

#### 10. Proposed Pool 2

Blanco Mesa Verde (72319)

11. Work Type Code N	12/ Well Type Code G	13. Cable/Rotary Rotary	14. Lease Type Code State	15. Ground Level Elevation 5988'
16. Multiple NO	17. Proposed Depth 7200'	18. Formation Basin Dakota / Blanco Mesa Verde	19. Contractor	20. Spud Date Spring 1999

#### 21. Proposed Casing and Cement Program

Hole Size	Casing Size	Casing weight/foot	Setting Depth	Sacks of Cement	Estimated TC/C
12-1/4"	8-5/8"	24# / J-55	300' 320	225 sx	Surface
7-7/8"	4-1/2"	10.5# / J-55	7200'	1010 sx	Surface

22. Describe the proposed program. If this application is to DEEPEN or PLUG BACK give the data on the present productive zone and proposed new productive zone. Describe the blowout prevention program, if any. Use additional sheets if necessary.

Surface: 8-5/8", 24#, J-55, STC casing at 300; — 225 sx of Class "B" cement w/2% CaCl, & ¼ pps Flocele (14.8 ppg, 1.34 cu.ft./sx)

Production: 4-1/2", 10.5#, J-55, STC casing at 7,200', w/DVT @ 2,200'

First Stage: Lead: 260 sx of 35:65 Poz "B" cement w/6% Gel, 5 pps Gilsonite, & ¼ pps Celloflake (12.9 ppg, 1.85 cu.ft./sx)

Tail: 150 sx of Class "G" cement w/5 pps Gilsonite, & ¼ pps Celloflake (14.8 ppg, 1.33 cu. Ft./sx)

Second Stage Lead: 500 sx of 35:65 Poz "B" cement w/6% Gel, 5 pps Gilsonite, & ¼ pps Celloflake (12.9 ppg, 1.85 cu.ft./sx)

Tail: 100 sx of Class "G" cement w/5 pps Gilsonite (14.8 ppg, 1.33 cu.ft./sx)

23. I hereby certify that the information given above is true and complete to the best of my knowledge and belief.

Signature:

Printed Name: Thomas W. DeLong

Title: Production Engineer

Date: May 5, 1999

Phone: (505) 324-1090

OIL CONSERVATION DIVISION

5-26-99

APPROVED BY:

TITLE:

DEPUTY OIL & GAS INSPECTOR, DIST. #1

Approval Date:

MAY 26 1999

Expiration Date:

MAY 26 2000

Conditions of Approval:

Attached:

HOLD C104 FOR DAKOTA NSL

District I  
PO Box 1980, Hobbs, NM 88241-1980

State of New Mexico  
Energy, Minerals & Natural Resources Department

Form C-102  
Revised February 21, 1994

District II  
PO Drawer DD, Artesia, NM 88211-0719

OIL CONSERVATION DIVISION  
PO Box 2088  
Santa Fe, NM 87504-2088

Instructions on back  
Submit to Appropriate District Office  
State Lease - 4 Copies  
Fee Lease - 3 Copies

District III  
1000 Rio Brazos Rd., Aztec, NM 87410

District IV  
PO Box 2088, Santa Fe, NM 87504-2088

☐ AMENDED REPORT

WELL LOCATION AND ACREAGE DEDICATION PLAT

*API Number <b>30-045-29922</b>		*Pool Code <b>71599 / 72319</b>	*Pool Name <b>BASIN DAKOTA / BLANCO MESAVERDE</b>
*Property Code <b>022669</b>	*Property Name <b>STATE GAS COM "BG"</b>		*Well Number <b>1A</b>
*GRID No. <b>167067</b>	*Operator Name <b>CROSS TIMBERS OPERATING COMPANY</b>		*Elevation <b>5988'</b>

<sup>10</sup> Surface Location

UL or lot no. <b>G</b>	Section <b>2</b>	Township <b>29N</b>	Range <b>10W</b>	Lot Idn	Feet from the <b>1965</b>	North/South line <b>NORTH</b>	Feet from the <b>1600</b>	East/West line <b>EAST</b>	County <b>SAN JUAN</b>
---------------------------	---------------------	------------------------	---------------------	---------	------------------------------	----------------------------------	------------------------------	-------------------------------	---------------------------

<sup>11</sup> Bottom Hole Location If Different From Surface

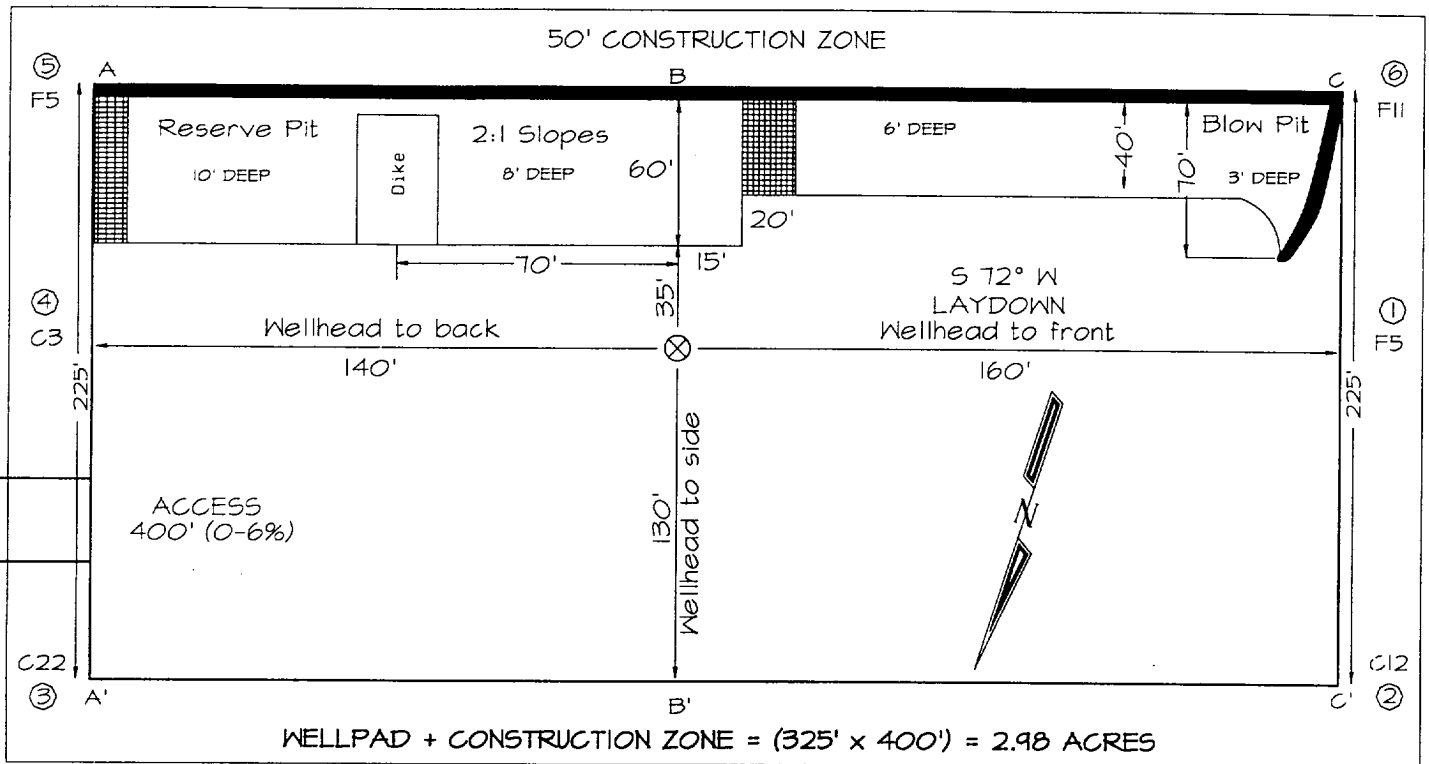
UL or lot no.	Section	Township	Range	Lot Idn	Feet from the	North/South line	Feet from the	East/West line	County
---------------	---------	----------	-------	---------	---------------	------------------	---------------	----------------	--------

<sup>12</sup> Dedicated Acres <b>328.24</b>	<sup>13</sup> Joint or Infill	<sup>14</sup> Consolidation Code	<sup>15</sup> Order No.
--	-------------------------------	----------------------------------	-------------------------

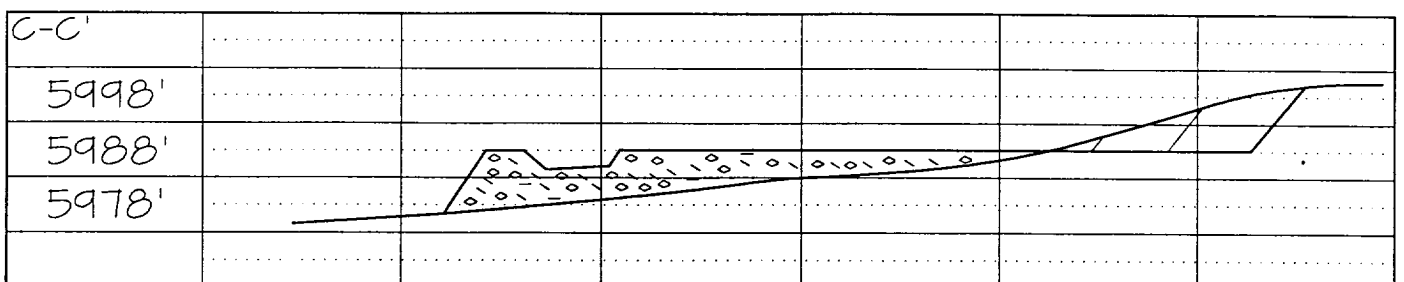
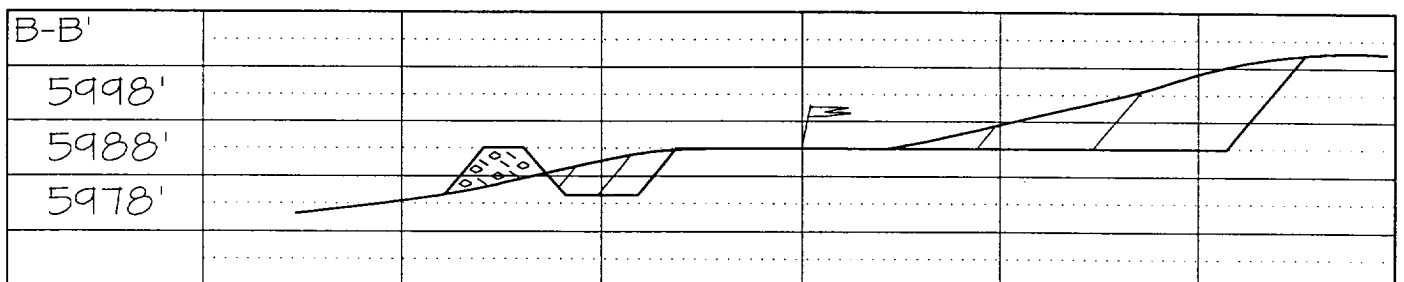
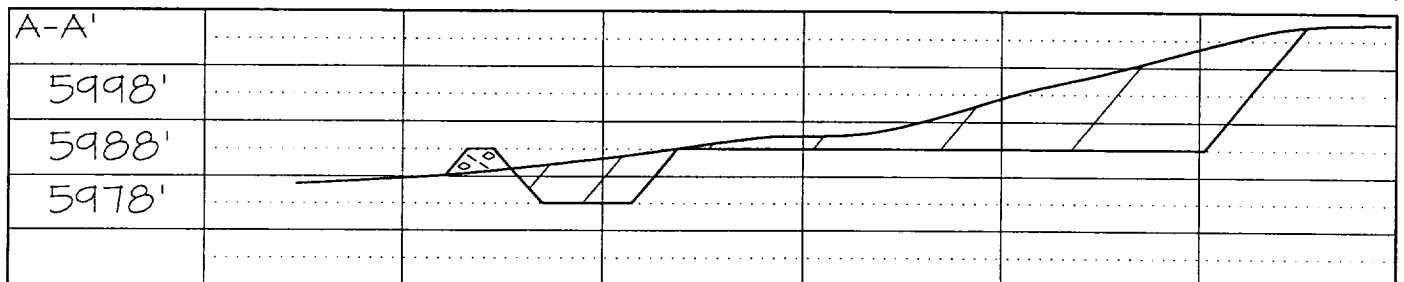
NO ALLOWABLE WILL BE ASSIGNED TO THIS COMPLETION UNTIL ALL INTERESTS HAVE BEEN CONSOLIDATED  
OR A NON-STANDARD UNIT HAS BEEN APPROVED BY THE DIVISION

<p><b>RECEIVED</b> MAY - 7 1999 OIL CON. DIV. DIST. 3</p>	<sup>17</sup> OPERATOR CERTIFICATION I hereby certify that the information contained herein is true and complete to the best of my knowledge and belief.   Signature Thomas W. DeLong Printed Name Production Engineer Title  Date
	<sup>18</sup> SURVEYOR CERTIFICATION I hereby certify that the well location shown on this plat was plotted from field notes of actual surveys made by me or under my supervision, and that the same is true and correct to the best of my belief.  MARCH 22, 1999 Date of Survey Signature and Seal of Professional Surveyor  Certificate Number 6857

**CROSS TIMBERS OPERATING COMPANY STATE GAS COM "BG" #1A**  
**1965' FNL & 1600' FEL SECTION 2, T29N, R10W, NMPM,**  
**SAN JUAN COUNTY, NEW MEXICO**  
**GROUND ELEVATION: 5988' DATE: MARCH 22, 1999**



Reserve Pit Dike: to be 8' above Deep side (overflow - 3' wide and 1' above shallow side).  
 Blow Pit: overflow pipe halfway between top and bottom and to extend over plastic liner and into blow pit.



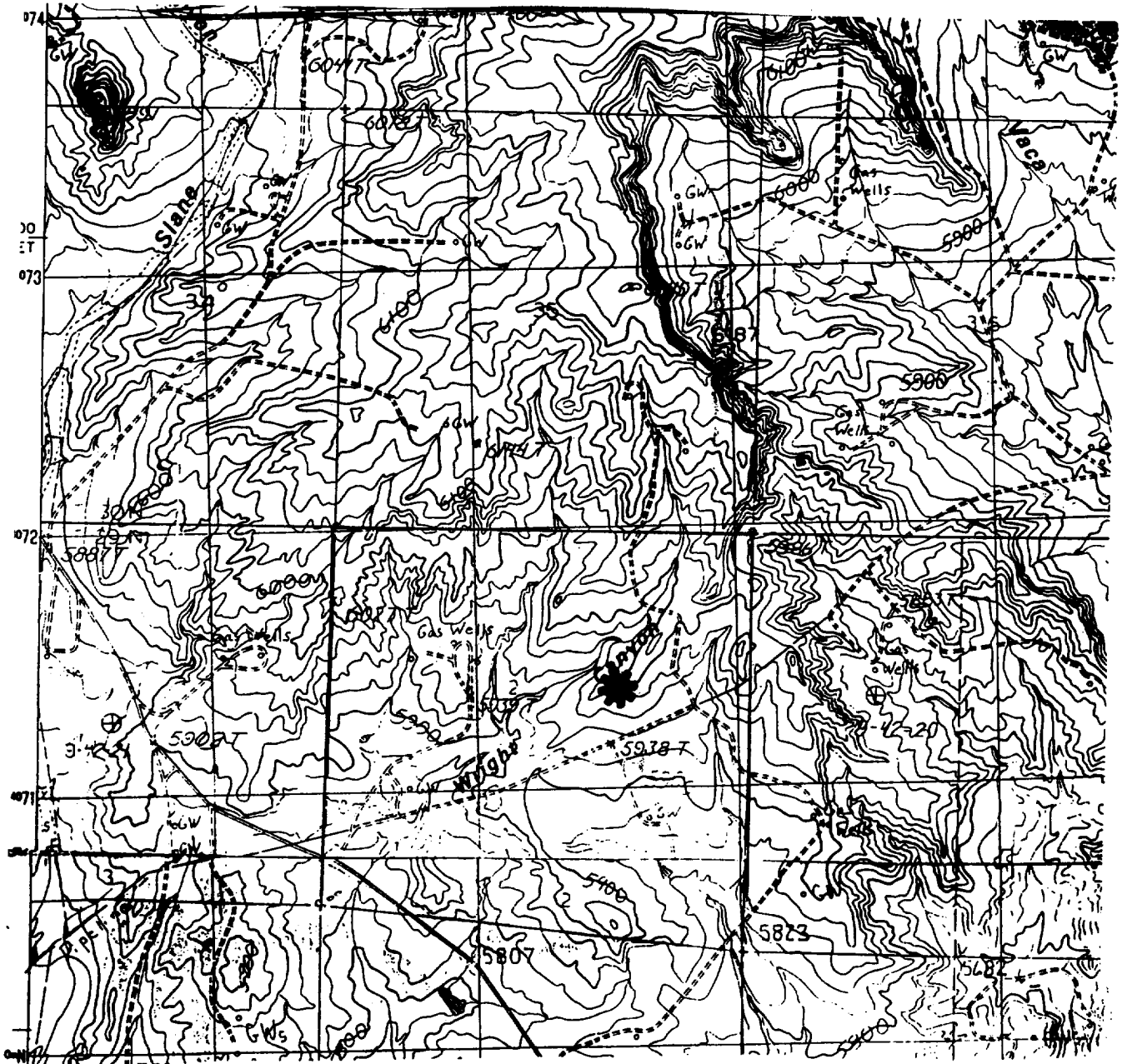
Note: Contractor should call One-Call for location of any marked or unmarked buried pipelines or cables on well pad and/or access road at least two (2) working days prior to construction

**CROSS TIMBERS OPERATING COMPANY**

**STATE GAS COM 'BG'**

**1965' FNL- 1600' FEL, Sec. 2, T29N-R10W**

**Proposed Basin Dakota / Blanco Mesa Verde**



USGS Blanco & Turley, New Mexico // 7.5' Series // Scale 1:24000