

District I

1625 N. French Dr., Hobbs, NM 88240

District II

811 South First, Artesia, NM 88210

District III

1000 Rio Brazos Road, Aztec, NM 87410

District IV

2040 South Pacheco, Santa Fe, NM 87505

State of New Mexico
Energy Minerals and Natural ResourcesOil Conservation Division
2040 South Pacheco
Santa Fe, NM 87505Form C-101
Revised March 17, 1999Submit to appropriate District Office
State Lease - 6 Copies
Fee Lease - 5 Copies

AMENDED REPORT

APPLICATION FOR PERMIT TO DRILL, RE-ENTER, DEEPEN, PLUG BACK, OR ADD A ZONE

¹ Operator Name and Address Amoco Production Company P. O. Box 3092 Houston, Texas 77253		² OGRID Number 000778
³ Property Code 000572	⁵ Property Name Gallegos Canyon Unit Cont	⁴ API Number 30-045-30223
		⁶ Well No. 558

⁷ Surface Location

UL or lot no.	Section	Township	Range	Lot Idn	Feet from the	North/South line	Feet from the	East/West line	County
K	16	29N	12W		1715 ✓	Souh	1670 ✓	West	San Juan

⁸ Proposed Bottom Hole Location If Different From Surface

UL or lot no.	Section	Township	Range	Lot Idn	Feet from the	North/South line	Feet from the	East/West line	County

⁹ Proposed Pool 1**Basin Fruitland Coal**¹⁰ Proposed Pool 2

¹¹ Work Type Code N - New Drill ✓	¹² Well Type Code Gas ✓	¹³ Cable/Rotary Rotary/Top Drive	¹⁴ Lease Type Code State	¹⁵ Ground Level Elevation 5696 ✓
¹⁶ Multiple No	¹⁷ Proposed Depth 1837' ✓	¹⁸ Formation Fruitland Coal	¹⁹ Contractor Aztec	²⁰ Spud Date 6/1/2000

²¹ Proposed Casing and Cement Program

Hole Size	Casing Size	Casing weight/foot	Setting Depth	Sacks of Cement	Estimated TOC
(1) 8 3/4"	7"	23#	135'	115 SXS CLS B	Surface
(2) 6 1/4"	4 1/2"	10.5#	1837'	191 SXS CLS B	Surface

²² Describe the proposed program. If this application is to DEEPEN or PLUG BACK, give the data on the present productive zone and proposed new productive zone. Describe the blowout prevention program, if any. Use additional sheets if necessary.**OBJECTIVE: Drill 150' into the Pictured Cliffs, set 4 1/2" Casing to TD, Stimulate the Fruitland Coal interval.****Run Cased Hole (GR-CCL-TDT) logs: TDT from PBD. GR- CCL from PDTB to Surface.****(1) Circulate Cement to Surface****(2) Set Casing 150' below top of Pictured Cliffs.****Mud Program: 0' - 135' Type - Spud Weight 8.6 - 9.2****135' - TD' Type - Water Weight 8.6 - 9.2****The hole will require sweeps to keep unloaded while fresh water drilling. Let hole conditions dictate frequency****Completion: Rigless, Single Stage Hydraulic Frac.**²³ I hereby certify that the information given above is true and complete to the best of my knowledge and belief.Signature: *Mary Corley*Printed name: **Mary Corley**Title: **Sr. Business Analyst**Date: **04/26/2000**Phone: **281-366-4491**

OIL CONSERVATION DIVISION

Approved by: *Charles T. Lerrin*Title: **DEPUTY OIL & GAS INSPECTOR, DIST. I**Approval Date: **APR 27 2000** Expiration Date: **APR 27 2001**

Conditions of Approval:

Attached

District I
PO Box 1980, Hobbs NM 88241-1980
District II
PO Drawer KK, Artesia, NM 87211-0719
District III
1000 Rio Brazos Rd., Aztec, NM 87410
District IV
PO Box 2088, Santa Fe, NM 87504-2088

State of New Mexico
Energy, Minerals & Natural Resources Department

OIL CONSERVATION DIVISION
PO Box 2088
Santa Fe, NM 87504-2088

Form C-102
Revised February 21, 1994

Instructions on back
Submit to Appropriate District Office
State Lease - 4 Copies
Fee Lease - 3 Copies

☐ AMENDED REPORT

WELL LOCATION AND ACREAGE DEDICATION PLAT

¹ API Number 30-045-30223	² Pool Code 71629	³ Pool Name BASIN FRUITLAND COAL
⁴ Property Code 000572	⁵ Property Name Gallegos Canyon Unit COM	⁶ Well Number # 558
⁷ OGRID No. 000118	⁸ Operator Name AMOCO PRODUCTION COMPANY	⁹ Elevation 5696

¹⁰ Surface Location

UL or Lot No.	Section	Township	Range	Lot Idn	Feet from the	North/South line	Feet from the	East/West line	County
K	16	29 N	12 W		1715	SOUTH	1670	WEST	SAN JUAN

¹¹ Bottom Hole Location If Different From Surface

¹² UL or lot no.	Section	Township	Range	Lot Idn	Feet from the	North/South line	Feet from the	East/West line	County
¹² Dedicated Acres 320 WPC	¹³ Joint or Infill	¹⁴ Consolidation Code	¹⁵ Order No.						

NO ALLOWABLE WILL BE ASSIGNED TO THIS COMPLETION UNTIL ALL INTERESTS HAVE BEEN CONSOLIDATED
OR A NON-STANDARD UNIT HAS BEEN APPROVED BY THE DIVISION

	¹⁷ OPERATOR CERTIFICATION I hereby certify that the information contained herein is true and complete to the best of my knowledge and belief. Signature: Mary Corley Printed Name: MARY CORLEY Title: SR. Business Analyst Date: 4/26/2000
	¹⁸ SURVEYOR CERTIFICATION I hereby certify that the well location shown on this plat was plotted from field notes of actual surveys made by me or under my supervision, and that the same is true and correct to the best of my belief. February 18, 2000 Date of Survey Signature and Seal of Professional Surveyor 7016 Certificate Number

**Amoco Production Company
BOP Pressure Testing Requirements**

Well Name: Gallegos Canyon Unit 567

County: San Juan

State: New Mexico

Formation	TVD	Anticipated Bottom Hole Pressure	Maximum Anticipated Surface Pressure **
Ojo Alamo	Surface		
Kirtland	415'		
Fruitland Coal	1360'		
Pictured Cliffs	1687'		

**** Note:** Determined using the following formula: $ABHP - (.22 * TVD) = ASP$

Requested BOP Pressure Test Exception: 750 PSI

**SAN JUAN BASIN
Fruitland Coal Formation
Pressure Control Equipment**

Background

The objective Fruitland Coal formation maximum surface pressure is anticipated to be less than 1000 PSI, based on shut-in surface pressures from adjacent wells. Pressure control equipment working pressure minimum requirements are therefore 2000 PSI. Equipment to be used will conform to API RP-53 (Figure 2.C.2) for a 2000 PSI system per Federal Onshore Order No. 2. Due to available conventional equipment within the area, 3000 PSI rated pressure control equipment will typically be utilized in a double ram type arrangement. Regional drilling rights to be utilized have substructure height limitations which exclude the use of annular preventers; therefore a rotating head will be installed above these rams. This pressure control equipment will be utilized for conventional drilling below conductor to total depth. No abnormal temperature, pressure, or Hydrogen Sulfide gas is anticipated.

Equipment Specification

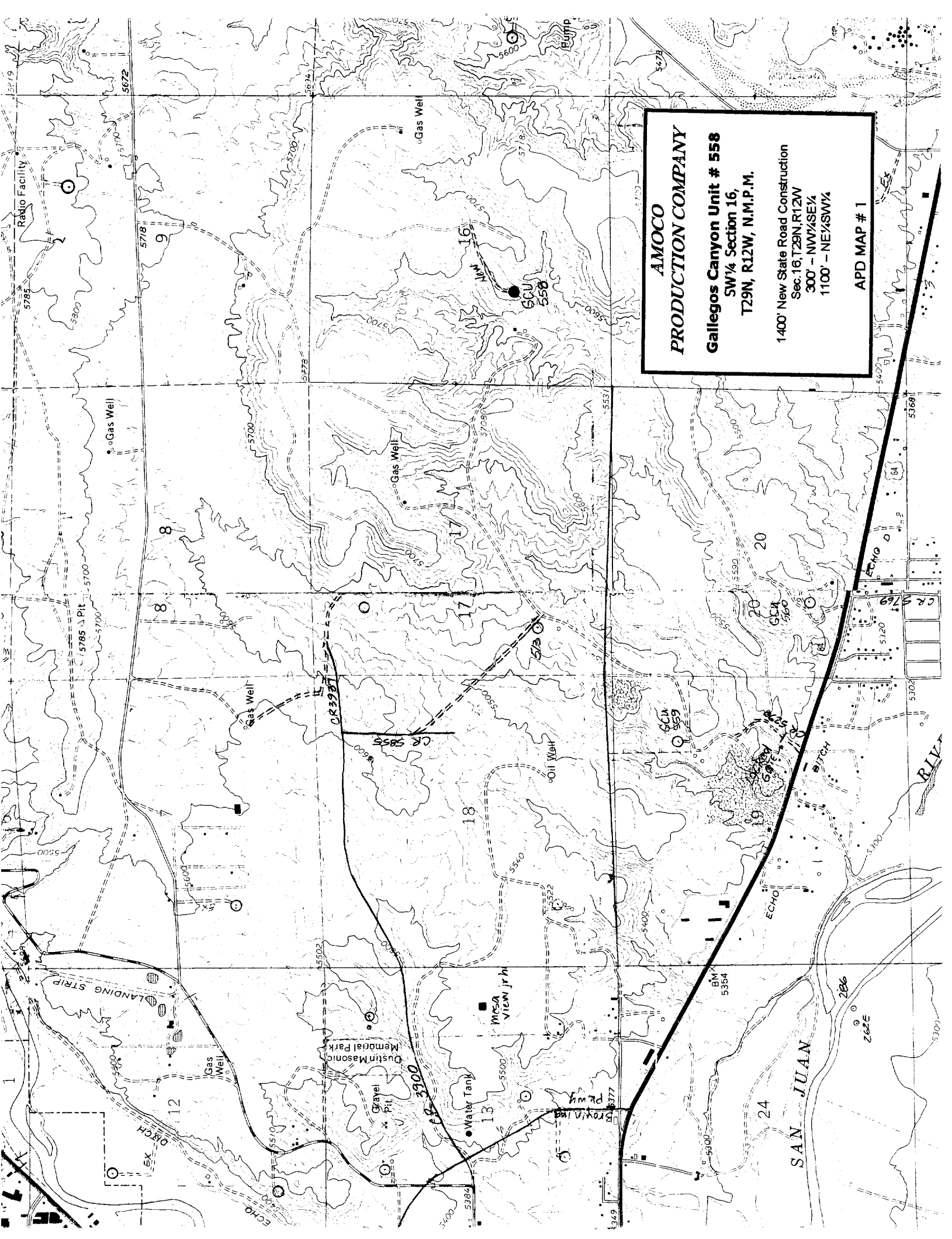
Interval

BOP Equipment

Below conductor casing to total depth

**11" nominal or 7 1/16", 3000 PSI double ram
preventer with rotating head.**

All ram type preventers and related control equipment will be hydraulically tested to 250 PSI (low pressure) and 750 PSI (high pressure), upon installation, following any repairs or equipment replacements, or at 30 day intervals. Accessories to BOP equipment will include Kelly cock, upper Kelly cock with a handle available, floor safety valves and choke manifold which will also be tested to equivalent pressure at the appropriate intervals.



AMOCO
PRODUCTION COMPANY

Gallegos Canyon Unit # 558
SW¼ Section 16,
T29N, R12W, N.M.P.M.

1400' New State Road Construction
Sec. 16, T29N, R12W
300' - NW¼SE¼
1100' - NE¼SW¼

APD MAP # 1