

Form 3180-3  
(December 1989)UNITED STATES  
DEPARTMENT OF THE INTERIOR

## BUREAU OF LAND MANAGEMENT

## APPLICATION FOR PERMIT TO DRILL OR DEEPEN

Form approved:  
Dudger Bureau No.1004-0136  
Expires: December 31, 1991

1a. TYPE OF WORK

b. TYPE OF WELL  
DL WELL ☐  
GAS WELL ☒DRILL ☒ —  
Other ☐DEEPEN ☒MULTIPLE ZONE ☐

2. NAME OF OPERATOR

AMOCO PRODUCTION COMPANY

ATTENTION:

Mary Corloy

3. ADDRESS AND TELEPHONE NO.

P.O. BOX 3092 HOUSTON, TX 77253

281-366-4491

4. LOCATION OF WELL (Report location clearly and in accordance with any State requirements. \*)

At surface

2030' FNL

2440' FWL

At proposed prod. zone

Lot 6

14. DISTANCE IN MILES AND DIRECTION FROM NEAREST TOWN OR POST OFFICE \*

7 1/2 Miles from Farmington, NM

15. DISTANCE FROM PROPOSED\*  
LOCATION TO NEAREST  
PROPERTY OR LEASE LINE, FT.  
(Also to nearest city, road line, if any)16. DISTANCE FROM PROPOSED LOCATION\*  
TO NEAREST WELL, DRILLING, COMPLETED,  
OR APPLIED FOR, ON THIS LEASE, FT.

21. ELEVATIONS (Show whether DJP, RT, GIL, etc.)

5537' - 5484' GR

16. NO. OF ACRES IN LEASE

43102.47

17. NO. OF ACRES ASSIGNED  
TO THIS WELL

W/ 318.97

19. PROPOSED DEPTH

1606' —

20. ROTARY OR CABLE TOOLS

22. APPROX. DATE WORK WILL START \*

07-20-2000

3. LEASE DESIGNATION AND SERIAL NO.

SF - 080047

6. IF INDIAN, ALLOTTEE OR TRIBE NAME

7. UNIT AGREEMENT NAME

8. FARM OR LEASE NAME, WELL NO.

Gallegos Canyon Unit

562

9. API WELL NO.

30-045-30277

10. FIELD AND POOL, OR WILDCAT

Basin Frulland Coal —

11. SEC., T., R., M., OR BLK.  
AND SURVEY OR AREA

Township

Range

12W

12. COUNTY OR PARISH

San Juan

13. STATE

New Mexico

## PROPOSED CASING AND CEMENTING PROGRAM

SIZE OF HOLE	GRADE OF CASING	WEIGHT PER FOOT	SETTING DEPTH	QUANTITY OF CEMENT	DENSITY (lb/gal)	YIELD (bbl)	WATER (gallons)	EXCESS %
8 3/4"	J-65 ST&C 7"	23#	135'	95 SXS (113 CU.FT.) CLS B CIRC TO SURFACE	15.8	1.18	6.25	100%
8 1/4"	J-65 ST&C 4 1/2"	10.5	1606' —	120 SXS (251 CU.FT.) CLS D - LEAD 44 SXS (97 CU.FT.) CLS B - TAIL	15.8	2.08	6.65	70%

NOTICE OF STAKING SUBMITTED 04/28/2000

OBJECTIVE: Drill 150' into the Pictured Cliffs, set 4 1/2" Casing to TD, perf &amp; stimulate the Frulland Coal.

METHOD OF DRILLING: Rotary/Top Drive

DEPTH OF DRILLING: 0' - TD

LOG PROGRAM TYPE: Cased Hole (GR-CCL-TDT)

DEPTH INTERVAL: TDT - PBTD to Top of Liner

GR &amp; CCL - PBTD to 0'

MUD PROGRAM: INTERVAL

TYPE MUD

WEIGHT, #/GAL

0' - 135' (3 JTS)

Spud

8.6 - 9.2

135' - 1606'

Water/LSND

8.8 - 9.2

(1) Circulate Cement to Surface

(2) Set Casing 150' below top of Pictured Cliffs

COMPLETION: Rigless, Single Stage Hydraulic Frac

IN ABOVE SPACE DESCRIBE PROPOSED PROGRAM: If proposal is to deepen, give data on present productive zone and proposed new productive zone. If proposal is to drill or deepen directionally, give pertinent data on subsurface locations and measured and true vertical depths. Give blow-out prevention program, if any.

24.

SIGNED

(This space for Federal or State office use)

TITLE SR Business Analyst

DATE

06-14-2000

PERMIT NO.

APPROVAL DATE

CONDITIONS OF APPROVAL, IF ANY:

APPROVED BY

TITLE

DATE

\*See Instructions On Reverse Side

Title 18 U.S.C. Section 1001, makes it a crime for any person knowingly and willfully to make to any department or agency of the United States any false, fictitious or fraudulent statements or representations as to any matter within its jurisdiction.

AMOCO

HOLD C104 FOR NSL

District I  
PO Box 1980, Hobbs NM 88241-1980  
District II  
PO Drawer KK, Aramis, NM 87211-0719  
District III  
1000 Rio Brazos Rd., Amar, NM 87410  
District IV  
PO Box 2088, Santa Fe, NM 87504-2088

State of New Mexico  
Energy, Minerals & Natural Resources Department

OIL CONSERVATION DIVISION  
PO Box 2088  
Santa Fe, NM 87504-2088

Form C-102  
Revised February 21, 1994

Instructions on back  
Submit to Appropriate District Office  
State Lease - 4 Copies  
Fee Lease - 3 Copies

☒ AMENDED REPORT

### WELL LOCATION AND ACREAGE DEDICATION PLAT

API Number <b>30-045-30277</b>		Well Code <b>71629</b>	Well Name <b>Basin Fruitland Coal</b>
Property Code <b>000570</b>	Property Name <b>Gallegos Canyon Unit</b>		Well Number <b># 562</b>
County No. <b>000778</b>	Operator Name <b>AMOCO PRODUCTION COMPANY</b>		Elevation <b>5557</b>

#### Surface Location

UL or Lot No.	Section	Township	Range	Lot Idn	Feet from the	North/South Line	Feet from the	East/West Line	County
<b>F (Lot 6)</b>	<b>22</b>	<b>29 N</b>	<b>12 W</b>		<b>2030</b>	<b>NORTH</b>	<b>2440</b>	<b>WEST</b>	<b>SAN JUAN</b>

#### Bottom Hole Location If Different From Surface

UL or lot no.	Section	Township	Range	Lot Idn	Feet from the	North/South Line	Feet from the	East/West Line	County

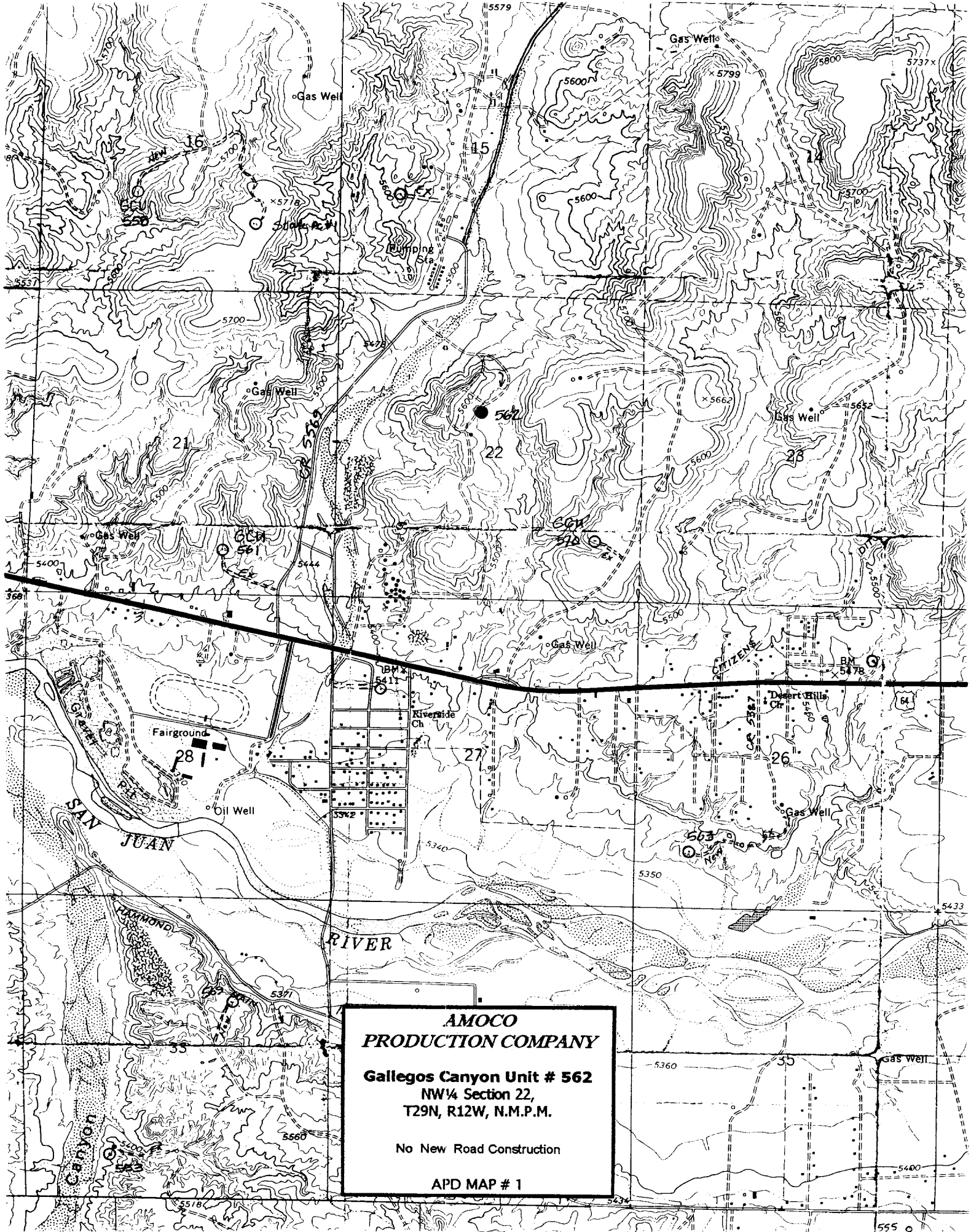
Dedicated Acres <b>318.97</b>	Joint or Infill	Consolidation Code	Order No.
----------------------------------	-----------------	--------------------	-----------

NO ALLOWABLE WILL BE ASSIGNED TO THIS COMPLETION UNTIL ALL INTERESTS HAVE BEEN CONSOLIDATED  
OR A NON-STANDARD UNIT HAS BEEN APPROVED BY THE DIVISION

						<h4>" OPERATOR CERTIFICATION</h4> <p>I hereby certify that the information contained herein is true and complete to the best of my knowledge and belief.</p> <p>Signature: <i>Mary Corley</i>  Printed Name: <b>Mary Corley</b>  Title: <b>Regulatory An</b>  Date: <b>6-1-2000</b></p>	
<h4>" SURVEYOR CERTIFICATION</h4> <p>I hereby certify that the well location above on this plat was plotted from field notes of actual surveys made by me or under my supervision, and that the same is true and correct to the best of my belief.</p> <p>Date of Survey: <b>April 20, 2000</b></p> <p>Signature and Seal of Professional Surveyor:</p> <div style="text-align: center;"> </div>							

(R) - BLM Record

*NSL*



**AMOCO**  
**PRODUCTION COMPANY**  
**Gallegos Canyon Unit # 562**  
NW¼ Section 22,  
T29N, R12W, N.M.P.M.  
  
No New Road Construction  
  
APD MAP # 1

**Amoco Production Company  
BOP Pressure Testing Requirements**

**Well Name:** Gallegos Canyon Unit 562

**County:** San Juan

**State:** New Mexico

Formation	TVD	Anticipated Bottom Hole Pressure	Maximum Anticipated Surface Pressure **
Ojo Alamo	124'		
Kirtland	282'		
Fruitland Coal	1126'		
Pictured Cliffs	1456'		

**\*\* Note:** Determined using the following formula:  $ABHP - (.22 * TVD) = ASP$

<b>Requested BOP Pressure Test Exception: 750 PSI</b>
---

---

**SAN JUAN BASIN  
Fruitland Formation  
Pressure Control Equipment**

**Background**

The objective Fruitland Coal formation maximum surface pressure is anticipated to be less than 1000 PSI, based on shut-in surface pressures from adjacent wells. Pressure control equipment working pressure minimum requirements are therefore 2000 PSI. Equipment to be used will conform to API RP-53 (Figure 2.C.2) for a 2000 PSI system per Federal Onshore Order No. 2. Due to available conventional equipment within the area, 3000 PSI rated pressure control equipment will typically be utilized in a double ram type arrangement. Regional drilling rights to be utilized have substructure height limitations which exclude the use of annular preventers; therefore a rotating head will be installed above these rams. This pressure control equipment will be utilized for conventional drilling below conductor to total depth. No abnormal temperature, pressure, or Hydrogen Sulfide gas is anticipated.

**Equipment Specification**

**Interval**

**BOP Equipment**

Below conductor casing to total depth

11" nominal or 7 1/16", 3000 PSI double ram  
preventer with rotating head.

All ram type preventers and related control equipment will be hydraulically tested to 250 PSI (low pressure) and 750 PSI (high pressure), upon installation, following any repairs or equipment replacements, or at 30 day intervals. Accessories to BOP equipment will include Kelly cock, upper Kelly cock with a handle available, floor safety valves and choke manifold which will also be tested to equivalent pressure at the appropriate intervals.