

UNITED STATES
DEPARTMENT OF THE INTERIOR
BUREAU OF LAND MANAGEMENT

APPLICATION FOR PERMIT TO DRILL, DEEPEN, OR PLUG BACK

1a. Type of Work DRILL	5. Lease Number NM-03999 Unit Reporting Number
1b. Type of Well GAS	6. If Indian, All. or Tribe
2. Operator BURLINGTON RESOURCES Oil & Gas Company	7. Unit Agreement Name
3. Address & Phone No. of Operator PO Box 4289, Farmington, NM 87499 (505) 326-9700	8. Farm or Lease Name Grambling 9. Well Number #5R
4. Location of Well 765' FSL, 1955' FEL Latitude 36° 41.5, Longitude 107° 46.0	10. Field, Pool, Wildcat Blanco Pict'd Cliffs 11. Sec., Twn, Rge, Mer. (NMPM) 0 Sec. 27, T-29-N, R-9-W API # 30-045-30351
14. Distance in Miles from Nearest Town 6 miles from Blanco	12. County San Juan 13. State NM
15. Distance from Proposed Location to Nearest Property or Lease Line 765'	
16. Acres in Lease	17. Acres Assigned to Well 160 SE/4
18. Distance from Proposed Location to Nearest Well, Drlg, Compl, or Applied for on this Lease 125'	
19. Proposed Depth 2237'	20. Rotary or Cable Tools Rotary
21. Elevations (DF, FT, GR, Etc.) 5618' GL	22. Approx. Date Work will Start
23. Proposed Casing and Cementing Program See Operations Plan attached	DRILLING OPERATIONS AUTHORIZED ARE SUBJECT TO COMPLIANCE WITH ATTACHED "GENERAL REQUIREMENTS"
24. Authorized by: <u>Sandy Cole</u> Regulatory/Compliance Supervisor	<u>8-1-09</u> Date

PERMIT NO. _____ APPROVAL DATE _____
APPROVED BY /s/ Jim Lovato TITLE _____ DATE MAR - 9 2001

Archaeological Report to be submitted

Threatened and Endangered Species Report to be submitted

NOTE: This format is issued in lieu of U.S. BLM Form 3160-3

Title 18 U.S.C. Section 1001, makes it a crime for any person knowingly and willfully to make to any department or agency of the United States any false, fictitious or fraudulent statements or presentations as to any matter within its jurisdiction.

District I
PO Box 1980, Hobbs, NM 88241-1980

State of New Mexico
Energy, Minerals & Natural Resources Department

Form C-102
Revised February 21, 1994
Instructions on back
Submit to Appropriate District Office
State Lease - 4 Copies
Fee Lease - 3 Copies

District II
PO Drawer DD, Artesia, NM 88211-0719

OIL CONSERVATION DIVISION
PO Box 2088
Santa Fe, NM 87504-2088

District III
1000 Rio Brazos Rd., Aztec, NM 87410

District IV
PO Box 2088, Santa Fe, NM 87504-2088

☐ AMENDED REPORT

WELL LOCATION AND ACREAGE DEDICATION PLAT

*API Number 30-045- 30351		*Pool Code 72359	*Pool Name Blanco Pictured Cliffs
*Property Code 7054	*Property Name GRAMBLING		*Well Number 5R
*GRID No. 14538	*Operator Name BURLINGTON RESOURCES OIL & GAS COMPANY		*Elevation 5618'

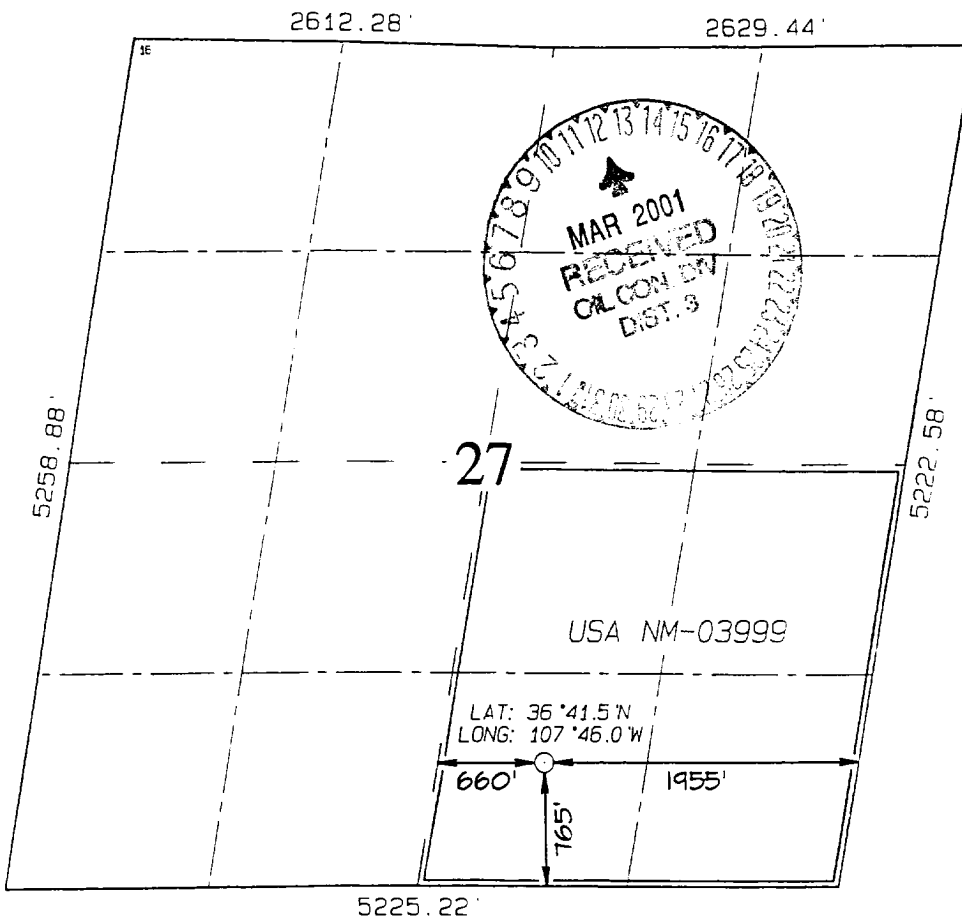
¹⁰ Surface Location

UL or lot no.	Section	Township	Range	Lot Idn	Feet from the	North/South line	Feet from the	East/West line	County
0	27	29N	9W		765	SOUTH	1955	EAST	SAN JUAN

¹¹ Bottom Hole Location If Different From Surface

UL or lot no.	Section	Township	Range	Lot Idn	Feet from the	North/South line	Feet from the	East/West line	County
¹² Dedicated Acres SE/160		¹³ Joint or Infill		¹⁴ Consolidation Code		¹⁵ Order No.			

NO ALLOWABLE WILL BE ASSIGNED TO THIS COMPLETION UNTIL ALL INTERESTS HAVE BEEN CONSOLIDATED OR A NON-STANDARD UNIT HAS BEEN APPROVED BY THE DIVISION



¹⁷ OPERATOR CERTIFICATION
I hereby certify that the information contained herein is true and complete to the best of my knowledge and belief

Peggy Cole
Signature

Peggy Cole
Printed Name

Regulatory Supervisor
Title

8-1-00
Date

¹⁸ SURVEYOR CERTIFICATION

I hereby certify that the well location shown on this plat was plotted from field notes of actual surveys made by me or under my supervision, and that the same is true and correct to the best of my belief.

JUNE 30, 2000
Date of Survey

Signature and Seal of Professional Surveyor

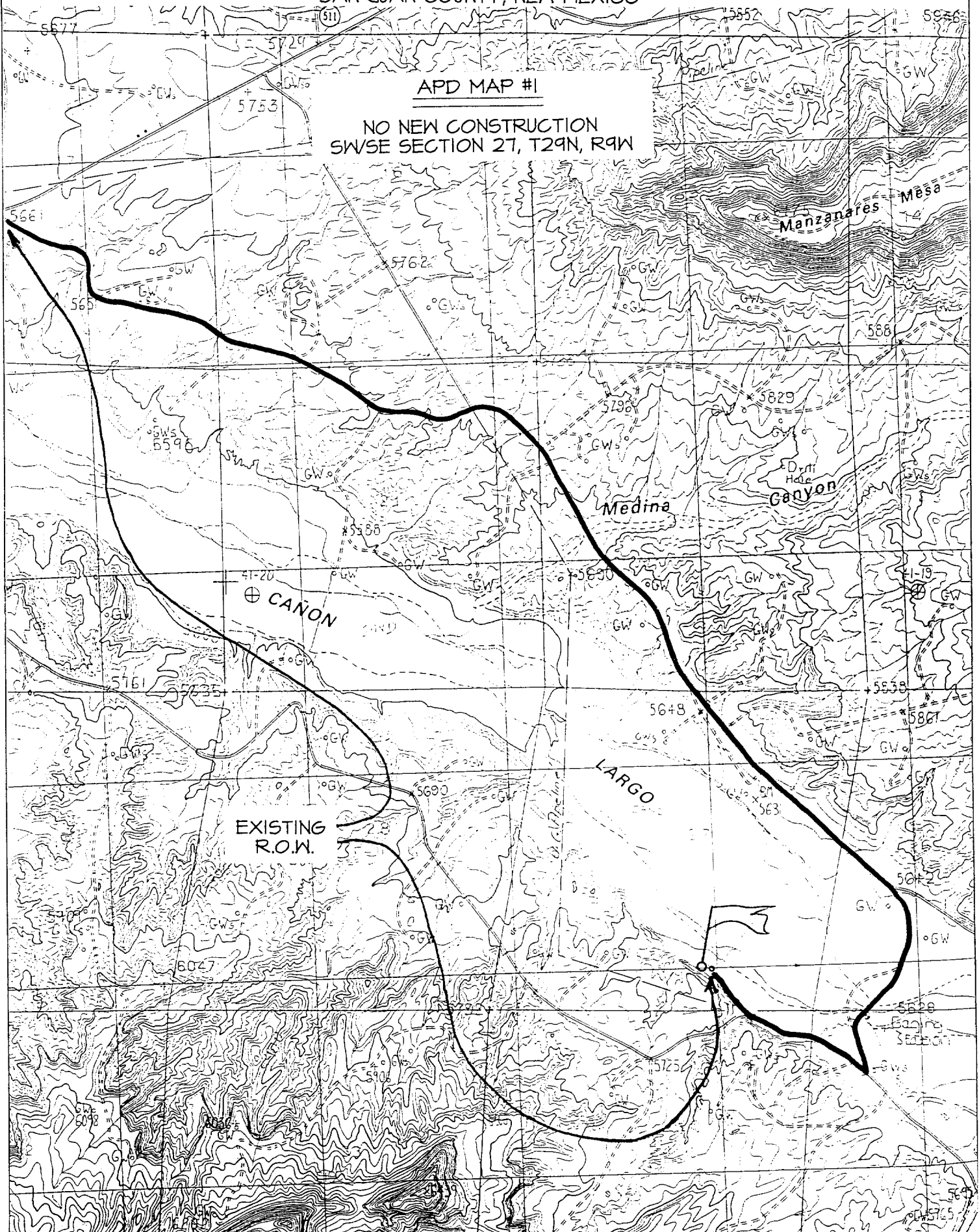
NEALE C. EDWARDS
NEW MEXICO
6857
Certificate Number 6857

BURLINGTON RESOURCES OIL & GAS COMPANY GRAMBLING #5R

765' FSL & 1955' FEL, SECTION 27, T29N, R9W, N.M.P.M.
SAN JUAN COUNTY, NEW MEXICO

APD MAP #1

NO NEW CONSTRUCTION
SW/SE SECTION 27, T29N, R9W



OPERATIONS PLAN

Well Name: Grambling #5R
Location: 765' FSL, 1955' FEL Section 27, T-29-N, R-9-W
San Juan County, New Mexico
Latitude 36° 41.5', Longitude 107° 46.0'
Formation: Blanco Pictured Cliffs
Elevation: 5618' GL

Formation:	Top	Bottom	Contents
Surface	Nacimiento	936'	
Ojo Alamo	936'	1089'	aquifer
Kirtland	1089'	1547'	
Fruitland	1547'	2037'	gas
Pictured Cliffs	2037'		gas
Total Depth	2237'		

Logging Program: cased hole: GR/CCL

Coring Program: none

Mud Program:

<u>Interval</u>	<u>Type</u>	<u>Weight</u>	<u>Vis.</u>	<u>Fluid Loss</u>
0- 120'	Spud	8.4-9.0	40-50	no control
120-2237'	LSND	8.4-9.0	40-60	no control

Casing Program (as listed, equivalent, or better):

<u>Hole Size</u>	<u>Depth Interval</u>	<u>Csq. Size</u>	<u>Wt.</u>	<u>Grade</u>
8 3/4"	0 - 120'	7"	20.0#	J-55
6 1/4"	0 - 2237' —	2 7/8"	6.5#	J-55

Tubing Program: - none

Float Equipment: 7" surface casing - saw tooth guide shoe.
Centralizers will be run in accordance with Onshore Order #2.

2 7/8" production casing - float shoe on bottom. Three centralizers run every other joint above shoe. Seven centralizers run every 3rd joint to the base of the Ojo Alamo @ 1089'. Two turbolizing type centralizers - one below and one into the base of the Ojo Alamo @ 1089'. Standard centralizers thereafter every fourth joint up to the base of the surface pipe.

Wellhead Equipment: 7" x 2 7/8" 2000 psi screw on independent wellhead.

Grambling #5R

Cementing:

7" surface casing - cement with 46 sx Class "B" cement with 1/2# flocele/sx and 3% calcium chloride (54 cu.ft. of slurry, 200% excess to circulate to surface). WOC 8 hrs. Test casing to 600 psi for 30 minutes.

2 7/8" production casing - Lead w/217 sx Class "B" w/3% sodium metasilicate, 1/2 pps cellophane and 10 pps gilsonite. Tail w/90 sx 50/50 Class "B" Poz w/2% gel, 1/2 pps flocele, and 10 pps gilsonite, 2% calcium chloride (752 cu.ft. of slurry, 100% excess to circulate to surface). WOC 8 hrs. If cement does not circulate to surface, a CBL will be run during completion to determine TOC.

BOP and tests:

Surface to TD - 11" 2000 psi (minimum double gate BOP stack (Reference Figure #1 and #2). Prior to drilling out surface casing, test rams to 600 psi/30 min.

Completion - 6" 2000 psi (minimum) double gate BOP stack (Reference Figure #2). Prior to completion operations, test rams and casing to 2000 psi/15 min.

From surface to TD - choke manifold (Reference Figure #3).

Pipe rams will be actuated to least once each day and blind rams actuated once each trip to test proper functioning. An upper kelly cock valve with handle and drill string safety valves to fit each drill string will be maintained and available on the rig floor.

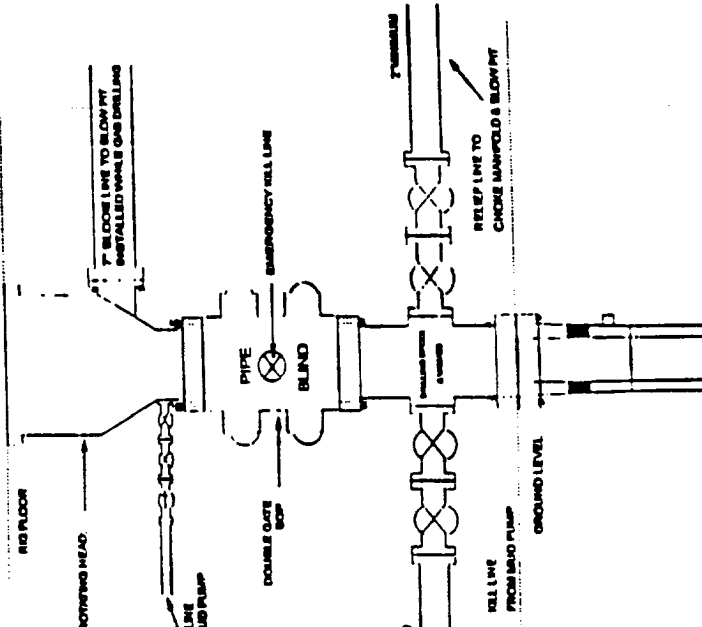
Additional information:

- * The Pictured Cliffs formation will be completed.
- * Anticipated pore pressure for the Pictured Cliffs is 600 psi.
- * This gas is dedicated.
- * The southeast quarter of section 27 is dedicated to the Pictured Cliffs.

Steve Campbell
Drilling Engineer

8/2/2000
Date

BOP Configuration 2M psi System

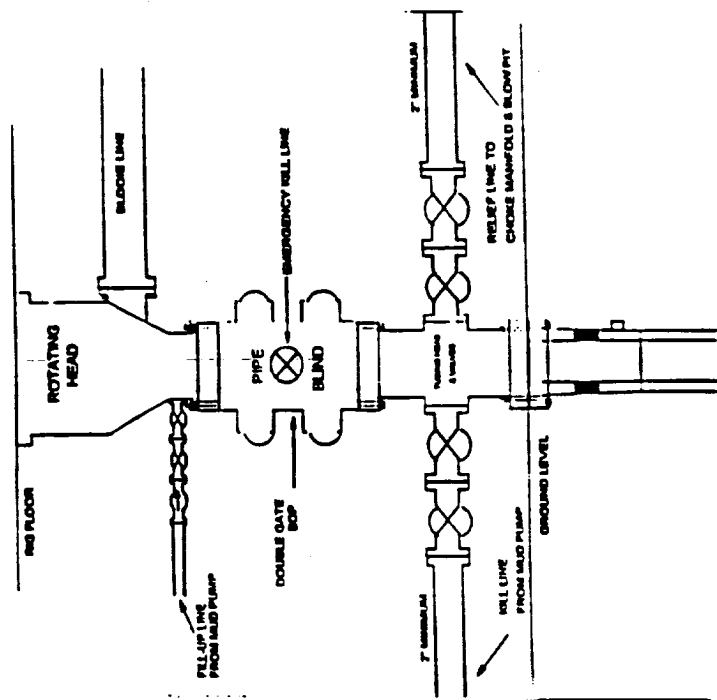


1. 2000psi minimum working pressure double gate BOP to be equipped
line and pipe rams. A Schaeffer Type 50 or equivalent rotating head to be
led on the top of the BOP. All equipment is 2000psi working pressure
or

FIGURE #1

BURLINGTON RESOURCES

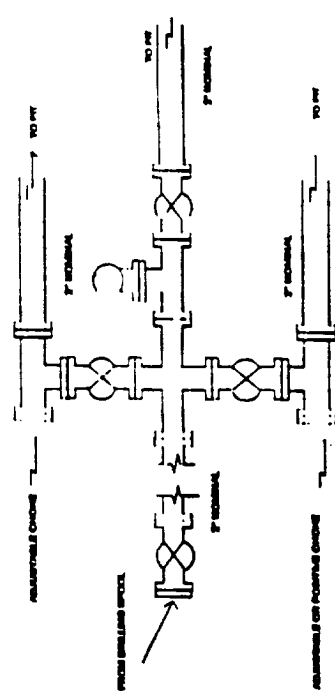
BOP Configuration 2M psi System



Minimum BOP Installation for Completion operations, 7 1/16" Bore (6" Nominal).
2,000 psi minimum working pressure double gate BOP to be equipped with blind
and pipe rams.

FIGURE #2

Choke Manifold Configuration 2M System



Minimum choke manifold installation from surface to Total Depth.
2" minimum, 2000psi working pressure equipment with two chokes.

Figure #3