

UNITED STATES  
DEPARTMENT OF THE INTERIOR  
BUREAU OF LAND MANAGEMENT

APPLICATION FOR PERMIT TO DRILL, DEEPEN, OR PLUG BACK

1a. Type of Work DRILL ✓	5. Lease Number SF-075695 Unit Reporting Number
1b. Type of Well GAS	6. If Indian, All. or Tribe
2. Operator <b>BURLINGTON RESOURCES</b> Oil & Gas Company	7. Unit Agreement Name
3. Address & Phone No. of Operator PO Box 4289, Farmington, NM 87499 (505) 326-9700	8. Farm or Lease Name Cozzens 9. Well Number #3R
4. Location of Well 1420' FNL, 2320' FEL Latitude 36° 42.9, Longitude 108° 00.8	10. Field, Pool, Wildcat Fulcher Kutz P.C. 11. Sec., Twn, Rge, Mer. (NMPM) G Sec. 20, T-29-N, R-11-W API # 30-045-30446
14. Distance in Miles from Nearest Town 4.8 miles to Bloomfield P.O.	12. County San Juan 13. State NM
15. Distance from Proposed Location to Nearest Property or Lease Line 1420'	17. Acres Assigned to Well 160 NE/4
16. Acres in Lease	
18. Distance from Proposed Location to Nearest Well, Drig, Compl, or Applied for on this Lease 655'	
19. Proposed Depth 2031' ✓	20. Rotary or Cable Tools Rotary
21. Elevations (DF, FT, GR, Etc.) 5690' -	22. Approx. Date Work will Start 11-09-00
23. Proposed Casing and Cementing Program See Operations Plan attached	
24. Authorized by: <u>Joel Farrell</u> Regulatory/Compliance Supervisor	Date

PERMIT NO. \_\_\_\_\_ APPROVAL DATE \_\_\_\_\_  
APPROVED BY /s/ Joel Farrell TITLE \_\_\_\_\_ DATE MAR 28

Archaeological Report to be submitted

Threatened and Endangered Species Report to be submitted

NOTE: This format is issued in lieu of U.S. BLM Form 3160-3

Title 18 U.S.C. Section 1001, makes it a crime for any person knowingly and willfully to make to any department or agency of the United States any false, fictitious or fraudulent statements or presentations as to any matter within its jurisdiction.

HOLD C104 FOR NSL

WMOCD

DISTRICT I  
P.O. Box 1980, Hobbs, N.M. 88241-1980

DISTRICT II  
P.O. Drawer DD, Artesia, N.M. 88211-0719

DISTRICT III  
1000 Rio Brazos Rd., Aztec, N.M. 87410

DISTRICT IV  
PO Box 2088, Santa Fe, NM 87504-2088

State of New Mexico  
Energy, Minerals & Natural Resources Department

OIL CONSERVATION DIVISION  
P.O. Box 2088  
Santa Fe, NM 87504-2088

Form C-102  
Revised February 21, 1994

Instructions on back  
Submit to Appropriate District Office  
State Lease - 4 Copies  
Fee Lease - 3 Copies

☐ AMENDED REPORT

WELL LOCATION AND ACREAGE DEDICATION PLAT

<sup>1</sup> API Number 30-045- <u>30446</u>	<sup>2</sup> Pool Code 77200	<sup>3</sup> Pool Name Fulcher Kutz Pictured Cliffs
<sup>4</sup> Property Code 18500	<sup>5</sup> Property Name COZZENS	<sup>6</sup> Well Number 3R
<sup>7</sup> OGRIID No. 14538	<sup>8</sup> Operator Name BURLINGTON OIL AND GAS, INC.	<sup>9</sup> Elevation 5690'

<sup>10</sup> Surface Location

UL or lot no.	Section	Township	Range	Lot Idn	Feet from the	North/South line	Feet from the	East/West line	County
G	20	29-N	11-W		1420'	NORTH	2320'	EAST	SAN JUAN

<sup>11</sup> Bottom Hole Location If Different From Surface

UL or lot no.	Section	Township	Range	Lot Idn	Feet from the	North/South line	Feet from the	East/West line	County
<sup>12</sup> Dedicated Acres NE/160			<sup>13</sup> Joint or Infill		<sup>14</sup> Consolidation Code		<sup>15</sup> Order No.		

NO ALLOWABLE WILL BE ASSIGNED TO THIS COMPLETION UNTIL ALL INTERESTS HAVE BEEN CONSOLIDATED  
OR A NON-STANDARD UNIT HAS BEEN APPROVED BY THE DIVISION

16	FD MARKED STONE WC/4 W/ 3/4" REBAR	N 89-30-17 W 2583.55' (M)	FD 1" CAP ON FENCE CORNER SHIERSHKE, XEMINE ET AL GOINS, M BARANOWSKI, XAVIER S. KRACH, MITCHELL P. CALVIN RODNEY P.	17 OPERATOR CERTIFICATION I hereby certify that the information contained herein is true and complete to the best of my knowledge and belief  Signature <u>Peggy Cole</u> Printed Name <u>Peggy Cole</u> Regulatory Supervisor Title Date <u>11-9-00</u>	
	USA SF-075695 NSL	MILLER, T.B.	2320'		KNOWLES, T.R. SHER, SYLVIA ET VIR
	LAT. 36°42.9'N LONG. 108°00.8'W	N 00-01-54 E 2647.14' (M)			
			FD 3/4" REBAR IN HWY 64	18 SURVEYOR CERTIFICATION I hereby certify that the well location shown on this plat was plotted from field notes of actual surveys made by me or under my supervision and that the same is true and correct to the best of my belief.  Date of Survey Signature and Seal of Professional Surveyor 8894 Certificate Number	

# BURLINGTON OIL AND GAS, INC.

## COZZENS 3R

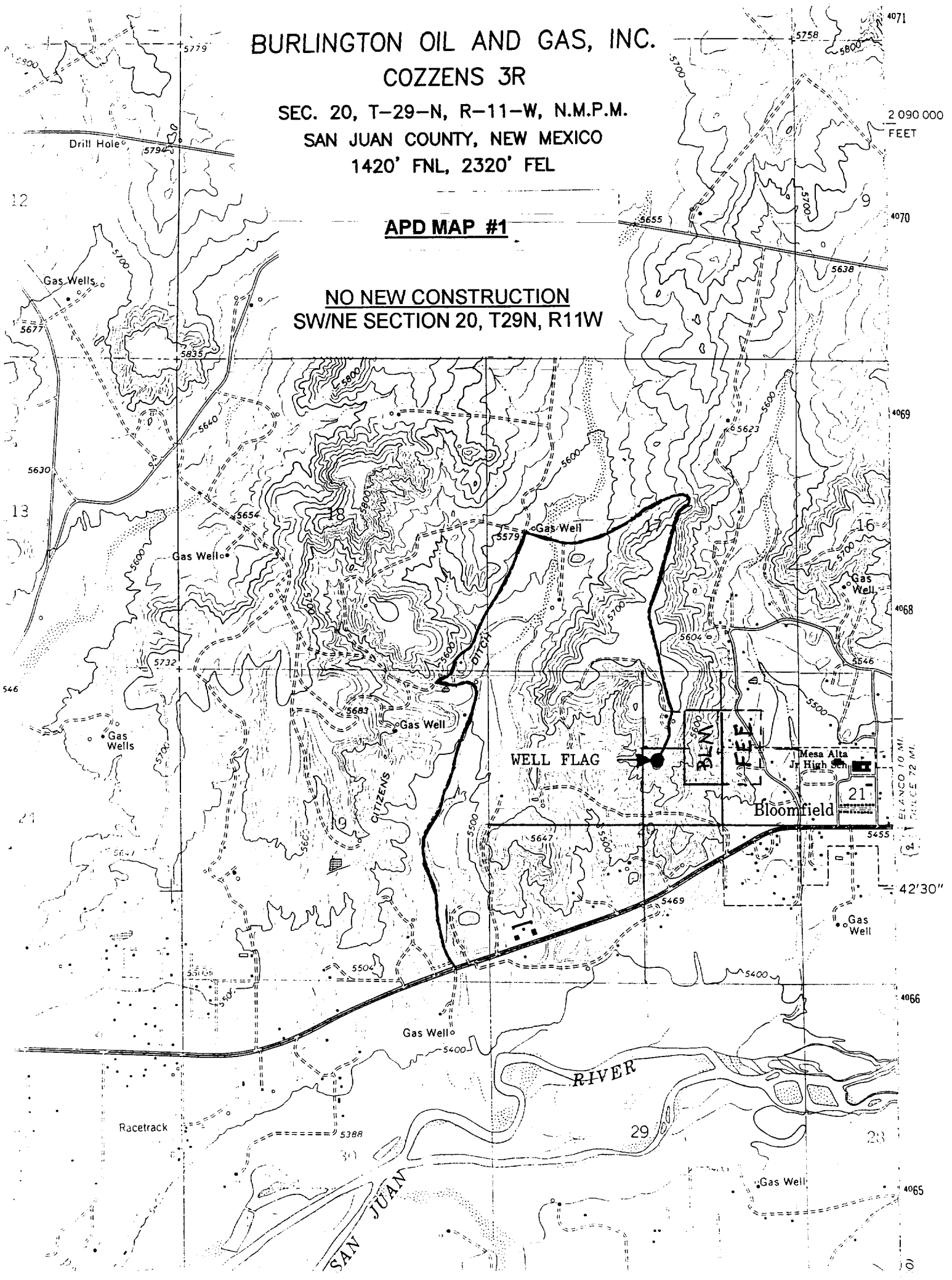
SEC. 20, T-29-N, R-11-W, N.M.P.M.

SAN JUAN COUNTY, NEW MEXICO

1420' FNL, 2320' FEL

**APD MAP #1**

**NO NEW CONSTRUCTION**  
**SW/NE SECTION 20, T29N, R11W**



## OPERATIONS PLAN

**Well Name:** Cozzens #3R  
**Location:** 1420'FNL, 2320'FEL, Section 20, T-29-N, R-11-W  
San Juan County, New Mexico  
Latitude 36° 42.9, Longitude 108° 00.8  
**Formation:** Fulcher Kutz Pictured Cliffs  
**Elevation:** 5690'GR

Formation:	Top	Bottom	Contents
Surface	San Jose	522'	
Ojo Alamo	522'	672'	aquifer
Kirtland	672'	1274'	gas
Fruitland	1274'	1831'	gas
Pictured Cliffs	2487'		gas
<b>Total Depth</b>	<b>2031'</b>		

**Logging Program:** cased hole - CCL-GR TD to surface

**Coring Program:** None

**Mud Program:**

Interval	Type	Weight	Vis.	Fluid Loss
0- 120'	Spud	8.4-9.0	40-50	no control
120-2031'	FW	8.4-9.0	32-45	no control

**Casing Program (as listed, equivalent, or better):**

Hole Size	Depth Interval	Csg.Size	Wt.	Grade
8 3/4"	0 - 120'	7"	20#	J-55
6 1/4"	0 - 2031'	2 7/8"	6.5#	J-55

**Float Equipment:** 7" surface casing - saw tooth guide shoe.  
Centralizers will be run in accordance with Onshore Order #2.

2 7/8" production casing - float shoe on bottom. Three centralizers run every other joint above shoe. Seven centralizers run every 3rd joint to the base of the Ojo Alamo @ 672. Two turbolizing type centralizers - one below and one into the base of the Ojo Alamo @ 672'. Standard centralizers thereafter every fourth joint up to the base of the surface pipe.

**Wellhead Equipment:** 7" x 2 7/8" 2000 psi screw on independent wellhead.

**Cementing:**

7" surface casing - cement with 46 sx Class "B" cement with 1/4# flocele/sx and 3% calcium chloride (54 cu.ft. of slurry, 200% excess to circulate to surface). WOC 8 hrs. Test casing to 600 psi for 30 minutes.

2 7/8" production casing - Lead w/193 sx Class "B" w/3% sodium metasilicate, 1/2 pps flocele, 10 pps gilsonite. Tail w/90 sx 50/50 Class "B" Poz w/2% gel, 2% calcium chloride, 1/4 pps flocele, 5 pps gilsonite (683 cu.ft. of slurry, 100% excess to circulate to surface). WOC 8 hrs. If cement does not circulate to surface, a CBL will be run during completion to determine TOC.

Note: If open hole logs are run, cement volumes will be based on 25% excess over caliper volumes.

**BOP and tests:**

Surface to TD - 11" 2000 psi (minimum double gate BOP stack (Reference Figure #1 and #2). Prior to drilling out surface casing, test rams to 600 psi/30 min.

Completion - 6" 2000 psi (minimum) double gate BOP stack (Reference Figure #2). Prior to completion operations, test rams and casing to 2000 psi/15 min.

From surface to TD - choke manifold (Reference Figure #3).

Pipe rams will be actuated to least once each day and blind rams actuated once each trip to test proper functioning. An upper kelly cock valve with handle and drill string safety valves to fit each drill string will be maintained and available on the rig floor.

**Additional information:**

- \* The Pictured Cliffs formation will be completed.
- \* Anticipated pore pressure for the Pictured Cliffs is 500 psi.
- \* This gas is dedicated.
- \* The northeast quarter of Section 20 is dedicated to the Pictured Cliffs.

Erin J. Giles  
Drilling Engineer

11/15/00  
Date