

UNITED STATES
DEPARTMENT OF THE INTERIOR
BUREAU OF LAND MANAGEMENT

APPLICATION FOR PERMIT TO DRILL, DEEPEN, OR PLUG BACK

1a. Type of Work DRILL	5. Lease Number SF-065557-A Unit Reporting Number
1b. Type of Well GAS	6. If Indian, All. or Tribe
2. Operator BURLINGTON RESOURCES Oil & Gas Company	7. Unit Agreement Name
3. Address & Phone No. of Operator PO Box 4289, Farmington, NM 87499 (505) 326-9700	8. Farm or Lease Name Cornell 9. Well Number #1R
4. Location of Well 1640' FNL, 1030' FEL Latitude 36° 44.6, Longitude 108° 02' 47"	10. Field, Pool, Wildcat Fulcher Kutz P.C. 11. Sec., Twn, Rge, Mer. (NMPM) H Sec. 12, T-29-N, R-12-W API # 30-045-30447
14. Distance in Miles from Nearest Town 7.1 miles to Aztec, NM P.O.	12. County San Juan 13. State NM
15. Distance from Proposed Location to Nearest Property or Lease Line 1030'	17. Acres Assigned to Well 157.22 NE/4
16. Acres in Lease	
18. Distance from Proposed Location to Nearest Well, Drlg, Compl, or Applied for on this Lease 2800'	
19. Proposed Depth 2086'	20. Rotary or Cable Tools Rotary
21. Elevations (DF, FT, GR, Etc.) 5735' GR	22. Approx. Date Work will Start 11-9-00
23. Proposed Casing and Cementing Program See Operations Plan attached	
24. Authorized by: <u>[Signature]</u> Regulatory/Compliance Supervisor	Date

PERMIT NO. _____ APPROVAL DATE 1/12/01
APPROVED BY _____ TITLE _____ DATE 1/12/01

Archaeological Report to be submitted

Threatened and Endangered Species Report to be submitted

NOTE: This format is issued in lieu of U.S. BLM Form 3160-3

Title 18 U.S.C. Section 1001, makes it a crime for any person knowingly and willfully to make to any department or agency of the United States any false, fictitious or fraudulent statements or presentations as to any matter within its jurisdiction.

NMDCD

DISTRICT I
P.O. Box 1980, Hobbs, N.M. 88241-1980

DISTRICT II
P.O. Drawer DD, Artesia, N.M. 88211-0719

DISTRICT III
1000 Rio Brazos Rd., Aztec, N.M. 87410

DISTRICT IV
PO Box 2088, Santa Fe, NM 87504-2088

State of New Mexico
Energy, Minerals & Natural Resources Department

OIL CONSERVATION DIVISION
P.O. Box 2088
Santa Fe, NM 87504-2088

Form C-102
Revised February 21, 1994
Instructions on back
Submit to Appropriate District Office
State Lease - 4 Copies
Fee Lease - 3 Copies

☐ AMENDED REPORT

WELL LOCATION AND ACREAGE DEDICATION PLAT

¹ API Number 30-045-30447	² Pool Code 77200	³ Pool Name Fulcher Kutz Pictured Cliffs
⁴ Property Code 6928	⁵ Property Name CORNELL	⁶ Well Number 1R
⁷ GRID No. 14538	⁸ Operator Name BURLINGTON RESOURCES OIL & GAS INC.	⁹ Elevation 5735

¹⁰ Surface Location									
UL or lot no.	Section	Township	Range	Lot Idn	Feet from the	North/South line	Feet from the	East/West line	County
H	12	29-N	12-W		1640	NORTH	1030	EAST	SAN JUAN

¹¹ Bottom Hole Location If Different From Surface									
UL or lot no.	Section	Township	Range	Lot Idn	Feet from the	North/South line	Feet from the	East/West line	County
¹² Dedicated Acres NE/157.22			¹³ Joint or Infill		¹⁴ Consolidation Code		¹⁵ Order No.		

NO ALLOWABLE WILL BE ASSIGNED TO THIS COMPLETION UNTIL ALL INTERESTS HAVE BEEN CONSOLIDATED
OR A NON-STANDARD UNIT HAS BEEN APPROVED BY THE DIVISION

¹⁶ BLM B.C. 1974		N 89°20'52" W 5306.80' (M)		BLM B.C. 1974		¹⁷ OPERATOR CERTIFICATION	
LOT 4		LOT 3		LOT 2		I hereby certify that the information contained herein is true and complete to the best of my knowledge and belief	
LOT 5		LOT 6		LOT 7		Signature Peggy Cole	
LOT 12		LOT 11		LOT 10		Printed Name Regulatory Supervisor	
LOT 13		LOT 14		LOT 15		Title 11-9-00	
LOT 16		LOT 17		LOT 18		Date	
LOT 19		LOT 20		LOT 21		¹⁸ SURVEYOR CERTIFICATION	
LOT 22		LOT 23		LOT 24		I hereby certify that the well location shown on this plat was plotted from field notes of actual surveys made by me or under my supervision and that the same is true and correct to the best of my belief.	
LOT 25		LOT 26		LOT 27		Date of Survey	
LOT 28		LOT 29		LOT 30		Signature and Seal of Professional Surveyor	
LOT 31		LOT 32		LOT 33		Certificate Number 8894	

BURLINGTON RESOURCES OIL & GAS INC.

CORNELL 1R

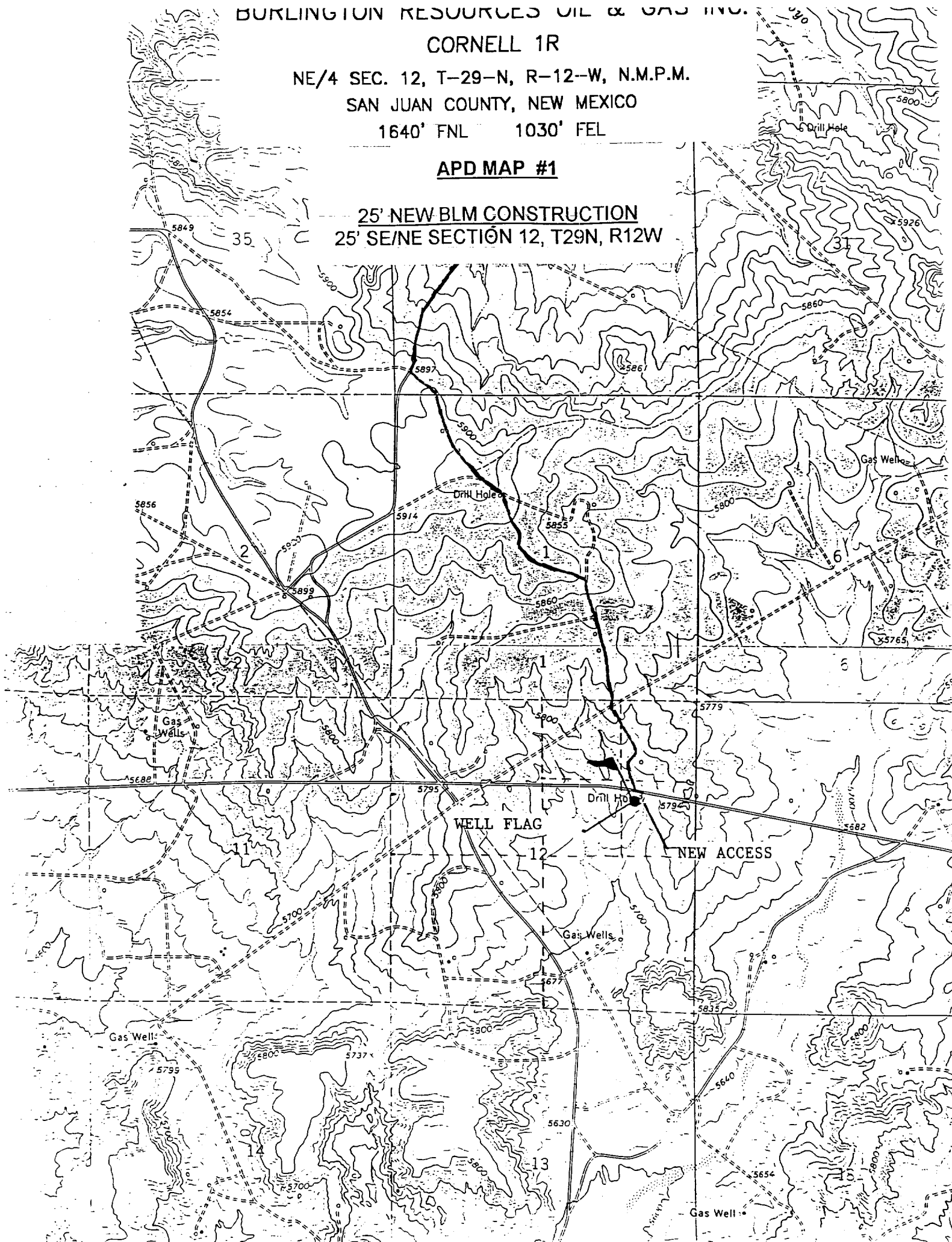
NE/4 SEC. 12, T-29-N, R-12-W, N.M.P.M.

SAN JUAN COUNTY, NEW MEXICO

1640' FNL 1030' FEL

APD MAP #1

25' NEW BLM CONSTRUCTION
25' SE/NE SECTION 12, T29N, R12W



OPERATIONS PLAN

Well Name: Cornell #1R
Location: 1640' FNL, 1030' FEL, Section 12, T-29-N, R-12-W
San Juan County, New Mexico
Latitude 36° 44.6, Longitude 108° 02.7
Formation: Fulcher Kutz Pictured Cliffs
Elevation: 5735' GR

Formation:	Top	Bottom	Contents
Surface	San Jose	549'	
Ojo Alamo	549'	676'	aquifer
Kirtland	676'	1297'	gas
Fruitland	1297'	1886'	gas
Pictured Cliffs	1886'		gas
Total Depth	2086'		

Logging Program: cased hole - CCL-GR TD to surface

Coring Program: None

Mud Program:

Interval	Type	Weight	Vis.	Fluid Loss
0-120'	Spud	8.4-9.0	40-50	no control
120-2086'	FW	8.4-9.0	32-45	no control

Casing Program (as listed, equivalent, or better):

Hole Size	Depth Interval	Csg. Size	Wt.	Grade
8 3/4"	0 - 120'	7"	20#	J-55
6 1/4"	0 - 2086'	2 7/8"	6.5#	J-55

Float Equipment: 7" surface casing - saw tooth guide shoe.
Centralizers will be run in accordance with Onshore Order #2.

2 7/8" production casing - float shoe on bottom. Three centralizers run every other joint above shoe. Seven centralizers run every 3rd joint to the base of the Ojo Alamo @ 676'. Two turbolizing type centralizers - one below and one into the base of the Ojo Alamo @ 676'. Standard centralizers thereafter every fourth joint up to the base of the surface pipe.

Wellhead Equipment: 7" x 2 7/8" 2000 psi screw on independent wellhead.

Cementing:

7" surface casing - cement with 46 sx Class "B" cement with 1/4# flocele/sx and 3% calcium chloride (54 cu.ft. of slurry, 200% excess to circulate to surface). WOC 8 hrs. Test casing to 600 psi for 30 minutes.

2 7/8" production casing - Lead w/200 sx Class "B" w/3% sodium metasilicate, 1/2 pps flocele, 10 pps gilsonite. Tail w/90 sx 50/50 Class "B" Poz w/2% gel, 2% calcium chloride, 1/4 pps flocele, 5 pps gilsonite (701 cu.ft. of slurry, 100% excess to circulate to surface). WOC 8 hrs. If cement does not circulate to surface, a CBL will be run during completion to determine TOC.

Note: If open hole logs are run, cement volumes will be based on 25% excess over caliper volumes.

BOP and tests:

Surface to TD - 11" 2000 psi (minimum double gate BOP stack (Reference Figure #1 and #2)). Prior to drilling out surface casing, test rams to 600 psi/30 min.

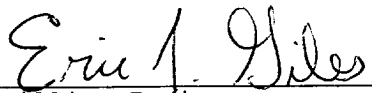
Completion - 6" 2000 psi (minimum) double gate BOP stack (Reference Figure #2). Prior to completion operations, test rams and casing to 2000 psi/15 min.

From surface to TD - choke manifold (Reference Figure #3).

Pipe rams will be actuated to least once each day and blind rams actuated once each trip to test proper functioning. An upper kelly cock valve with handle and drill string safety valves to fit each drill string will be maintained and available on the rig floor.

Additional information:

- * The Pictured Cliffs formation will be completed.
- * Anticipated pore pressure for the Pictured Cliffs is 500 psi.
- * This gas is dedicated.
- * The northeast quarter of Section 12 is dedicated to the Pictured Cliffs.



Drilling Engineer

11/15/00

Date