

District I
1625 N. French Dr., Hobbs, NM 88240
District II
811 South First, Artesia, NM 88210
District III
1000 Rio Brazos Rd., Aztec, NM 87410
District IV
2040 South Pacheco, Santa Fe, NM 87505

State of New Mexico
Energy, Minerals & Natural Resources

OIL CONSERVATION DIVISION
2040 South Pacheco
Santa Fe, NM 87505

Form C-101
Revised March 12, 1999

Submit to Appropriate District Office
State Lease - 6 Copies
Fee Lease - 5 Copies

☐ AMENDED REPORT

APPLICATION FOR PERMIT TO DRILL, RE-ENTER, DEEPEN, PLUGBACK, OR ADD A ZONE

¹ Operator Name and Address. Richardson Operating Co. 1700 Lincoln, Suite 1700, Denver, Co. 80203		² OGRID Number 019219
³ API Number 30-0 45-30460		
⁴ Property Code 27065	⁵ Property Name ROPCO 8	⁶ Well No. 4

⁷ Surface Location

UL or lot no. J	Section 8	Township 29n	Range 14w	Lot Idn	Feet from the 1607	North/South line South	Feet from the 1451	East/West line East	County SJ
--------------------	--------------	-----------------	--------------	---------	-----------------------	---------------------------	-----------------------	------------------------	--------------

⁸ Proposed Bottom Hole Location If Different From Surface

UL or lot no.	Section	Township	Range	Lot Idn	Feet from the	North/South line	Feet from the	East/West line	County
---------------	---------	----------	-------	---------	---------------	------------------	---------------	----------------	--------

⁹ Proposed Pool 1 Twin Mounds PC	¹⁰ Proposed Pool 2
--	-------------------------------

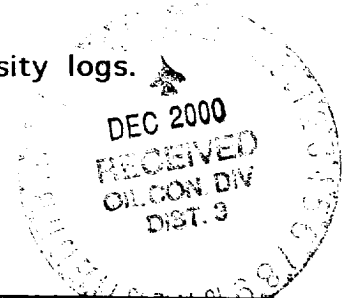
¹¹ Work Type Code N	¹² Well Type Code G	¹³ Cable/Rotary R	¹⁴ Lease Type Code P	¹⁵ Ground Level Elevation 5270
¹⁶ Multiple Yes	¹⁷ Proposed Depth 1,200'	¹⁸ Formation Lewis	¹⁹ Contractor Ludwig	²⁰ Spud Date 1-10-01

²¹ Proposed Casing and Cement Program

Hole Size	Casing Size	Casing weight/foot	Setting Depth	Sacks of Cement	Estimated TOC
8-3/4"	7"	20	120'	30 sx	Surface
6-1/4"	4-1/2"	10.5	1,200'	140 sx	Surface

²² Describe the proposed program. If this application is to DEEPEN or PLUG BACK give the data on the present productive zone and proposed new productive zone. Describe the blowout prevention program, if any. Use additional sheets if necessary.

Will use 2000# BOP and run Induction/GR, cement bond, & density logs.
Will cement surface and long strings with Class B + additives.



²³ I hereby certify that the information given above is true and complete to the best of my knowledge and belief.

Signature:

Brian Wood

Printed name:

Brian Wood

Title:

Consultant

Date:

December 22, 2000

Phone:

(505) 466-8120

OIL CONSERVATION DIVISION

Approved by:

[Signature]

Title: DEPUTY OIL & GAS INSPECTOR, DIST. 3

Approval Date:

DEC 26 2000

Expiration Date:

DEC 26 2001

Conditions of Approval:

Attached ☐

State of New Mexico
Energy, Minerals & Mining Resources Department

Form C - 102

OIL CONSERVATION DIVISION
2040 South Pacheco
Santa Fe, NM 87505

☐ AMENDED REPORT

WELL LOCATION AND ACREAGE DEDICATION PLAT

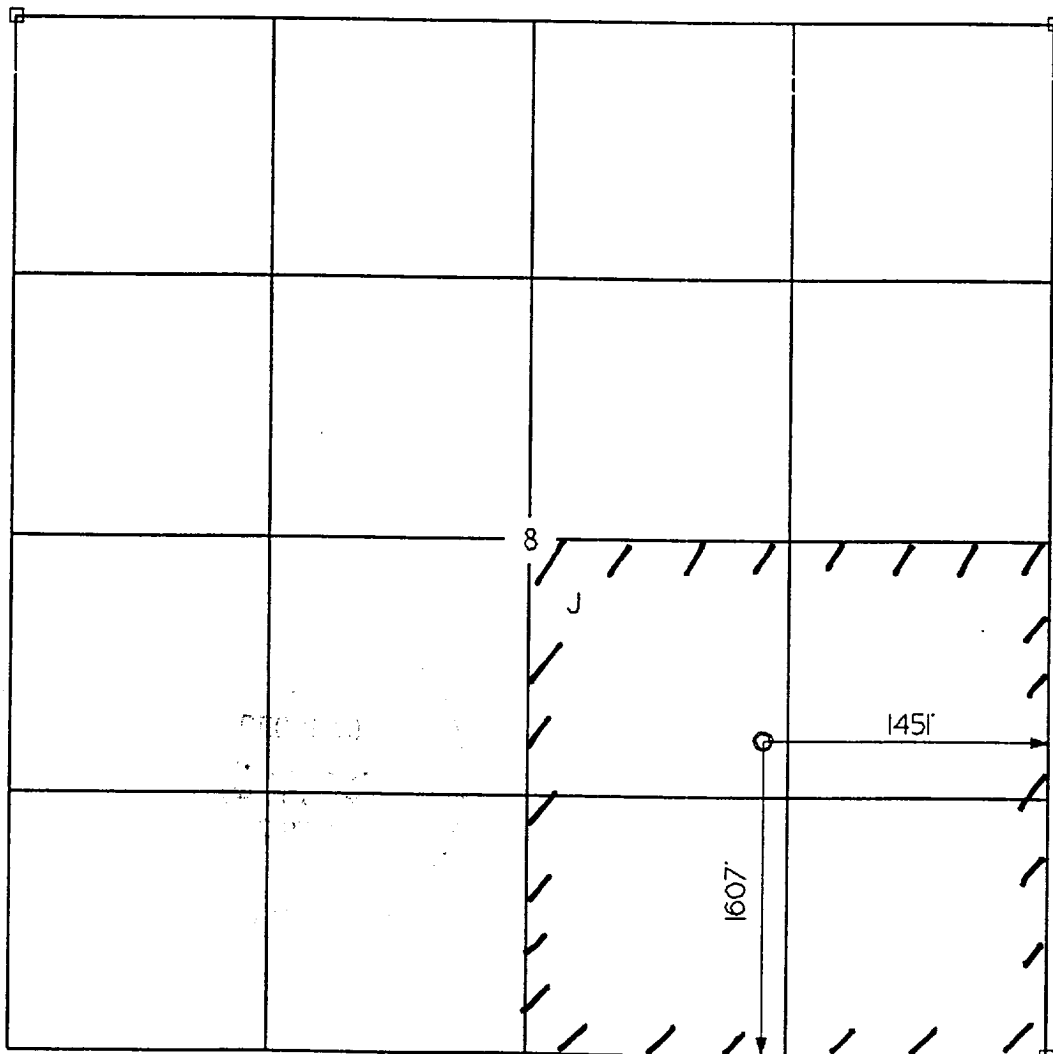
APA Number 30:045-3046 0	Pool Code 86620 -	Pool Name TWIN MOUNDS PC-
Property Code 27065	Property Name ROPCO	Well Number 8 - 4
OGRID No. 019219	Operator Name -RICHARDSON OPERATING COMPANY	Elevation 5270' -

Surface Location									
UL or Lot J	Sec. 8	Twp. 29 N.	Rge. 14 W.	Lot Idn.	Feet from > 1607	North/South South	Feet from > 1451	East/West EAST	County SAN JUAN

Bottom Hole Location If Different From Surface									
UL or Lot	Sec.	Twp.	Rge.	Lot Idn.	Feet from >	North/South	Feet from >	East/West	County

Dedication 1605E4	Joint ?	Consolidation	Order No.
-----------------------------	---------	---------------	-----------

NO ALLOWABLE WILL ASSIGNED TO THIS COMPLETION UNTIL ALL INTERESTS HAVE BEEN CONSOLIDATED
OR A NON-STANDARD UNIT HAS BEEN APPROVED BY THE DIVISION



OPERATOR CERTIFICATION	
I hereby certify that the information contained herein is true and complete to the best of my knowledge and belief.	
Signature	<i>Brian Wood</i>
Printed Name	BRIAN WOOD
Title	CONSULTANT
Date	DEC. 22, 2000
SURVEYOR CERTIFICATION	
I hereby certify that the well location on this plat was plotted from field notes of actual surveys made by me or under my supervision, and that the same is true and correct to the best of my belief.	
Date of Survey	27 OCTOBER 2000
Signature and Seal of Professional Surveyor	<i>G. E. Hubbleston</i> 6844 REGISTERED LAND SURVEYOR