

UNITED STATES
DEPARTMENT OF THE INTERIOR
BUREAU OF LAND MANAGEMENT

APPLICATION FOR PERMIT TO DRILL, DEEPEN, OR PLUG BACK

1a. Type of Work DRILL	5. Lease Number SF-078813 Unit Reporting Number
1b. Type of Well GAS	6. If Indian, All. or Tribe
2. Operator BURLINGTON RESOURCES Oil & Gas Company	7. Unit Agreement Name
3. Address & Phone No. of Operator PO Box 4289, Farmington, NM 87499 (505) 326-9700	8. Farm or Lease Name Cooper 9. Well Number #6R
4. Location of Well 900' FNL, 1300' FWL Latitude 36° 45.5'N, Longitude 108° 02.2'W	10. Field, Pool, Wildcat Fulcher Kutz Pictured Cliffs 11. Sec., Twn, Rge, Mer. (NMPM) Sec. 6, T-29-N, R-11-W API # 30-045-30469
14. Distance in Miles from Nearest Town 6 miles from Aztec P.O.	12. County San Juan 13. State NM
15. Distance from Proposed Location to Nearest Property or Lease Line 900'	
16. Acres in Lease	17. Acres Assigned to Well 137.8 NW/4
18. Distance from Proposed Location to Nearest Well, Drlg, Compl, or Applied for on this Lease 700'	
19. Proposed Depth 2180' <small>This action is subject to technical and procedural review pursuant to 43 CFR 3165.3 and appeal pursuant to 43 CFR 3165.4.</small>	20. Rotary or Cable Tools Rotary
21. Elevations (DF, FT, GR, Etc.) 5802' GR	22. Approx. Date Work will Start
23. Proposed Casing and Cementing Program See Operations Plan attached	DRILLING OPERATIONS AUTHORIZED ARE SUBJECT TO COMPLIANCE WITH ATTACHED "GENERAL REQUIREMENTS"
24. Authorized by: <u>[Signature]</u> Regulatory/Compliance Supervisor	Date <u>11-21-00</u>

PERMIT NO. _____ APPROVAL DATE 11/14/01
APPROVED BY [Signature] TITLE AFM minerals DATE 11/19/01

Archaeological Report to be submitted

Threatened and Endangered Species Report to be submitted

NOTE: This format is issued in lieu of U.S. BLM Form 3160-3

Title 18 U.S.C. Section 1001, makes it a crime for any person knowingly and willfully to make to any department or agency of the United States any false, fictitious or fraudulent statements or presentations as to any matter within its jurisdiction.

DISTRICT I
P.O. Box 1980, Hobbs, N.M. 88241-1980

DISTRICT II
P.O. Drawer DD, Artesia, N.M. 88211-0719

DISTRICT III
1000 Rio Brazos Rd., Aztec, N.M. 87410

DISTRICT IV
PO Box 2088, Santa Fe, NM 87504-2088

State of New Mexico
Energy, Minerals & Natural Resources Department

OIL CONSERVATION DIVISION

P.O. Box 2088
Santa Fe, NM 87504-2088

Form C-102
Revised February 21, 1994

Instructions on back
Submit to Appropriate District Office
State Lease - 4 Copies
Fee Lease - 3 Copies

☐ AMENDED REPORT

WELL LOCATION AND ACREAGE DEDICATION PLAT

¹ API Number 30-045- 30469	² Pool Code 77200	³ Pool Name Fulcher Kutz Pictured Cliffs
⁴ Property Code 18498	⁵ Property Name COOPER	⁶ Well Number 6R
⁷ GRID No. 14538	⁸ Operator Name BURLINGTON OIL AND GAS, INC.	⁹ Elevation 5802'

¹⁰ Surface Location

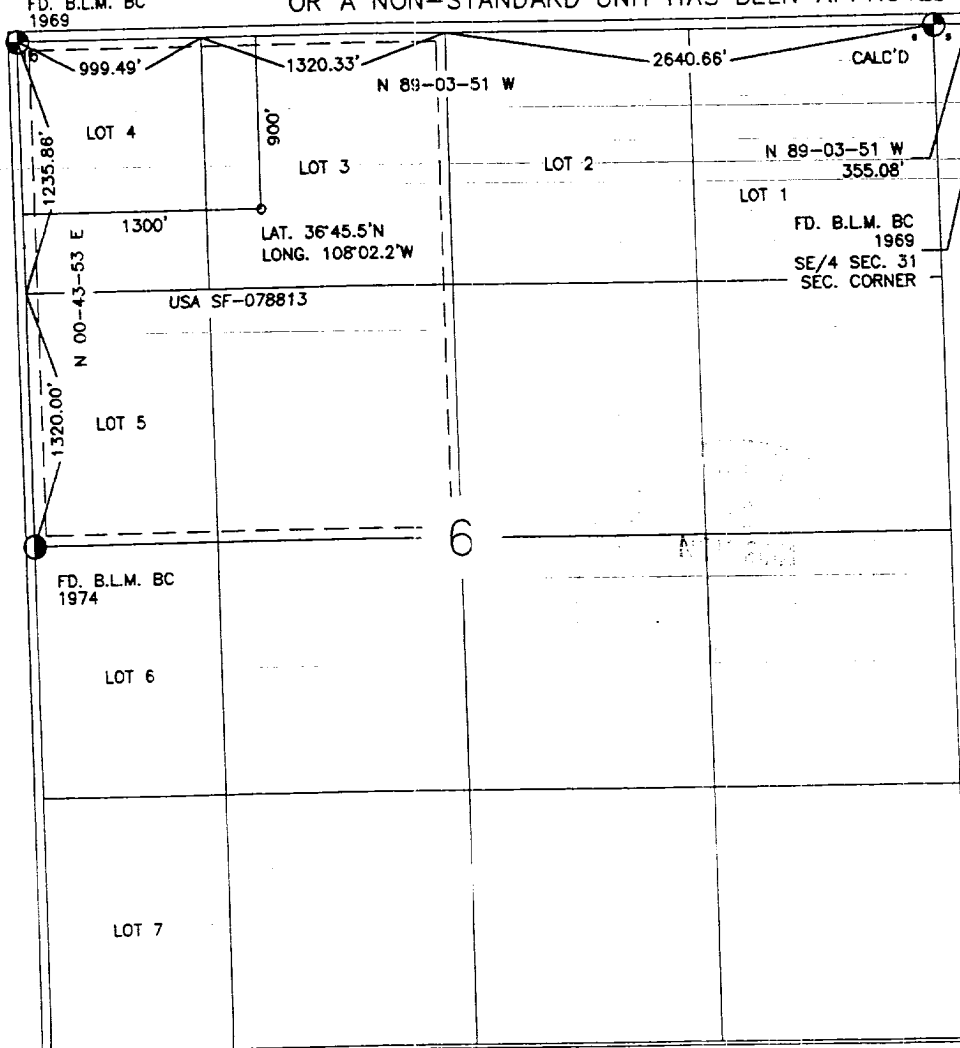
UL or lot no.	Section	Township	Range	Lot Idn	Feet from the	North/South line	Feet from the	East/West line	County
C	6	29-N	1'-W		900'	NORTH	1300'	WEST	SAN JUAN

¹¹ Bottom Hole Location If Different From Surface

UL or lot no.	Section	Township	Range	Lot Idn	Feet from the	North/South line	Feet from the	East/West line	County
¹² Dedicated Acres NW/137.8			¹³ Joint or Infill		¹⁴ Consolidation Code		¹⁵ Order No.		

NO ALLOWABLE WILL BE ASSIGNED TO THIS COMPLETION UNTIL ALL INTERESTS HAVE BEEN CONSOLIDATED
OR A NON-STANDARD UNIT HAS BEEN APPROVED BY THE DIVISION

FD. B.L.M. BC
1969



¹⁷ OPERATOR CERTIFICATION

I hereby certify that the information contained herein is true and complete to the best of my knowledge and belief

Signature

Peggy Cole

Printed Name

Regulatory Supervisor

Title

Date

11-20-00

¹⁸ SURVEYOR CERTIFICATION

I hereby certify that the well location shown on this plat was plotted from field notes of actual surveys made by me or under my supervision, and that the same is true and correct to the best of my belief.

Date of Survey

Signature and Seal of Professional Surveyor

8894

Certificate Number

OPERATIONS PLAN

Well Name: Cooper #6R
Location: 900' FNL, 1300' FWL, Section 6, T-29-N, R-11-W
San Juan County, New Mexico
Latitude 36° 45.5, Longitude 108° 02.2
Formation: Fulcher Kutz Pictured Cliffs
Elevation: 5802' GR

Formation:	Top	Bottom	Contents
Surface	San Jose	621'	
Ojo Alamo	621'	744'	aquifer
Kirtland	744'	1361'	gas
Fruitland	1361'	1980'	gas
Pictured Cliffs	1980'		gas
Total Depth	2180'		

Logging Program: cased hole - CCL-GR TD to surface

Coring Program: None

Mud Program:

Interval	Type	Weight	Vis.	Fluid Loss
0- 120'	Spud	8.4-9.0	40-50	no control
120-2180'	FW	8.4-9.0	32-45	no control

Casing Program (as listed, equivalent, or better):

Hole Size	Depth Interval	Csg. Size	Wt.	Grade
8 3/4"	0 - 120'	7"	20#	J-55
6 1/4"	0 - 2180'	2 7/8"	6.5#	J-55

Float Equipment: 7" surface casing - saw tooth guide shoe.
Centralizers will be run in accordance with Onshore Order #2.

2 7/8" production casing - float shoe on bottom. Three centralizers run every other joint above shoe. Seven centralizers run every 3rd joint to the base of the Ojo Alamo @ 744'. Two turbolizing type centralizers - one below and one into the base of the Ojo Alamo @ 744'. Standard centralizers thereafter every fourth joint up to the base of the surface pipe.

Wellhead Equipment: 7" x 2 7/8" 2000 psi screw on independent wellhead.

Cementing:

7" surface casing - cement with 46 sx Class "B" cement with 1/4# flocele/sx and 3% calcium chloride (54 cu.ft. of slurry, 200% excess to circulate to surface). WOC 8 hrs. Test casing to 600 psi for 30 minutes.

2 7/8" production casing - Lead w/211 sx Class "H" w/3% sodium metasilicate, 1/2 pps flocele, 10 pps gilsonite. Tail w/90 sx 50/50 Class "H" Poz w/2% gel, 2% calcium chloride, 1/4 pps flocele, 5 pps gilsonite (733 cu.ft. of slurry, 100% excess to circulate to surface). WOC 8 hrs. If cement does not circulate to surface, a CBL will be run during completion to determine TOC.

Note: If open hole logs are run, cement volumes will be based on 25% excess over caliper volumes.

BOP and tests:

Surface to TD - 11" 2000 psi (minimum double gate BOP stack (Reference Figure #1 and #2). Prior to drilling out surface casing, test rams to 600 psi/30 min.

Completion - 6" 2000 psi (minimum) double gate BOP stack (Reference Figure #2). Prior to completion operations, test rams and casing to 2000 psi/15 min.

From surface to TD - choke manifold (Reference Figure #3).

Pipe rams will be actuated to least once each day and blind rams actuated once each trip to test proper functioning. An upper kelly cock valve with handle and drill string safety valves to fit each drill string will be maintained and available on the rig floor.

Additional information:

- * The Pictured Cliffs formation will be completed.
- * Anticipated pore pressure for the Pictured Cliffs is 500 psi.
- * This gas is dedicated.
- * The northwest quarter of Section 6 is dedicated to the Pictured Cliffs.


Drilling Engineer

11/21/00
Date

BURLINGTON OIL AND GAS, INC.

COOPER 6R

SEC. 6, T-29-N, R-11-W, N.M.P.M.

SAN JUAN COUNTY, NEW MEXICO

900' FNL, 1300' FWL

APD MAP #1

700' NEW B.L.M. CONSTRUCTION
400' NE/NW SECTION 6, T29N, R11W
300' SE/NW SECTION 6, T29N, R11W

