

District I
PO Box 1980, Hobbs, NM 88241-1980
District II
811 S. 1st Street, Artesia, NM 88210-2834
District III
1000 Rio Brazos Rd., Aztec, NM 87410
District IV
2040 South Pacheco, Santa Fe, NM 87505

State of New Mexico
Energy, Minerals & Natural Resources Department

OIL CONSERVATION DIVISION
2040 South Pacheco
Santa Fe, NM 87505

Form C-101
Revised October 18, 1999
Instructions on back
Submit to Appropriate District Office
State Lease - 6 Copies
Fee Lease - 5 Copies

☐ AMENDED REPORT

APPLICATION FOR PERMIT TO DRILL, RE-ENTER, DEEPEN, PLUG BACK, OR ADD A ZONE

¹ Operator name and Address Cross Timbers Operating Company 2700 Farmington Ave., Bldg. K. Ste 1 Farmington, NM 87401		² OGRID Number 167067
⁴ Property Code 22782	⁵ Property Name McDaniel Gas Com "B"	³ API Number 30-0 45-30612
		⁶ Well No. #1R

⁷ Surface Location

UL or lot no.	Section	Township	Range	Lot. Idn	Feet from the	North/South Line	Feet from the	East/West line	County
A	26	29N	10W		665'	North	840'	East	San Juan

⁸ Proposed Bottom Hole Location If Different From Surface

UL or lot no.	Section	Township	Range	Lot. Idn	Feet from the	North/South Line	Feet from the	East/West line	County

⁹ Proposed Pool 1

Basin Dakota

¹⁰ Proposed Pool 2

¹¹ Work Type Code N	¹² Well Type Code G	¹³ Cable/Rotary R	¹⁴ Lease Type Code P (private)	¹⁵ Ground Level Elevation 5,524' Ground Level
¹⁶ Multiple No	¹⁷ Proposed Depth 6,700'	¹⁸ Formation Dakota	¹⁹ Contractor Bearcat Drilling	²⁰ Spud Date May, 2001

²¹ Proposed Casing and Cement Program

Hole Size	Casing Size	Casing weight/foot	Setting Depth	Sacks of Cement	Estimated TOC
12-1/4"	8-5/8"	24.0 #/ft	370'	+ -277 sx	Surface
7-7/8"	4-1/2"	10.5 #/ft	6,700'	+ -1,100 sx	Surface

²² Describe the proposed program. If this application is to DEEPEN or PLUG BACK give the data on the present productive zone and proposed new productive zone. Describe the blowout prevention program, if any. Use additional sheets if necessary.

Drill to 370' Run new 8-5/8" csg. Cmt csg w/277 sx cl "B" cmt (15.6 ppg, 1.18 cuft/sx) w/2% CaCl & 1/4# Celloflake. Attempt to circ cmt to surface. NU BOP. Test BOP. Mix mud. Drill ahead w/7-7/8 hole.

Drill to TD (@ 6,700'). Log well. Run new 4-1/2" csg to btm. Cmt csg with approx +-900 sx Lite-Crete cmt w/1/4# celloflake @ 9.5 ppg. 2.51 cuft/sx followed by +-200 sx cl "G" 50/50 poz cmt mixed @ 13.0 ppg. 1.42 cuft/sx. Attempt to circ cmt to surface. Final cement volumes will be determined from caliper log + 30%. See enclosed drawing for BOP stack configuration.

²³ I hereby certify that the information given above is true and complete to the best of my knowledge and belief.

Signature:

Printed name: Jeffrey W. Patton

Title: Drilling Engineer

OIL CONSERVATION DIVISION

Approved by:

Title: DEPUTY OIL & GAS INSPECTOR, DIST. 43

Approval Date: APR - 2 2001

Expiration Date: APR - 2 2002

DISTRICT I
P.O. Box 1980, Hobbs, N.M. 88241-1980

DISTRICT II
P.O. Drawer DD, Artesia, N.M. 88211-0719

DISTRICT III
1000 Rio Brazos Rd., Aztec, N.M. 87410

DISTRICT IV
PO Box 2088, Santa Fe, NM 87504-2088

State of New Mexico
Energy, Minerals & Natural Resources Department

OIL CONSERVATION DIVISION
P.O. Box 2088
Santa Fe, NM 87504-2088

Form C-102
Revised February 21, 1994
Instructions on back
Submit to Appropriate District Office
State Lease - 4 Copies
Fee Lease - 3 Copies

☐ AMENDED REPORT

WELL LOCATION AND ACREAGE DEDICATION PLAT

¹ API Number 30-045-3061.2		² Pool Code 71599	³ Pool Name BASIN DAKOTA
⁴ Property Code 22782	⁵ Property Name MCDANIEL GAS COM "B"		⁶ Well Number 1R
⁷ GRID No. 167067	⁸ Operator Name CROSS TIMBERS OPERATING CO.		⁹ Elevation 5524'

¹⁰ Surface Location

UL or lot no.	Section	Township	Range	Lot Idn	Feet from the	North/South line	Feet from the	East/West line	County
A	26	29-N	10-W		665'	NORTH	840'	EAST	SAN JUAN

¹¹ Bottom Hole Location If Different From Surface

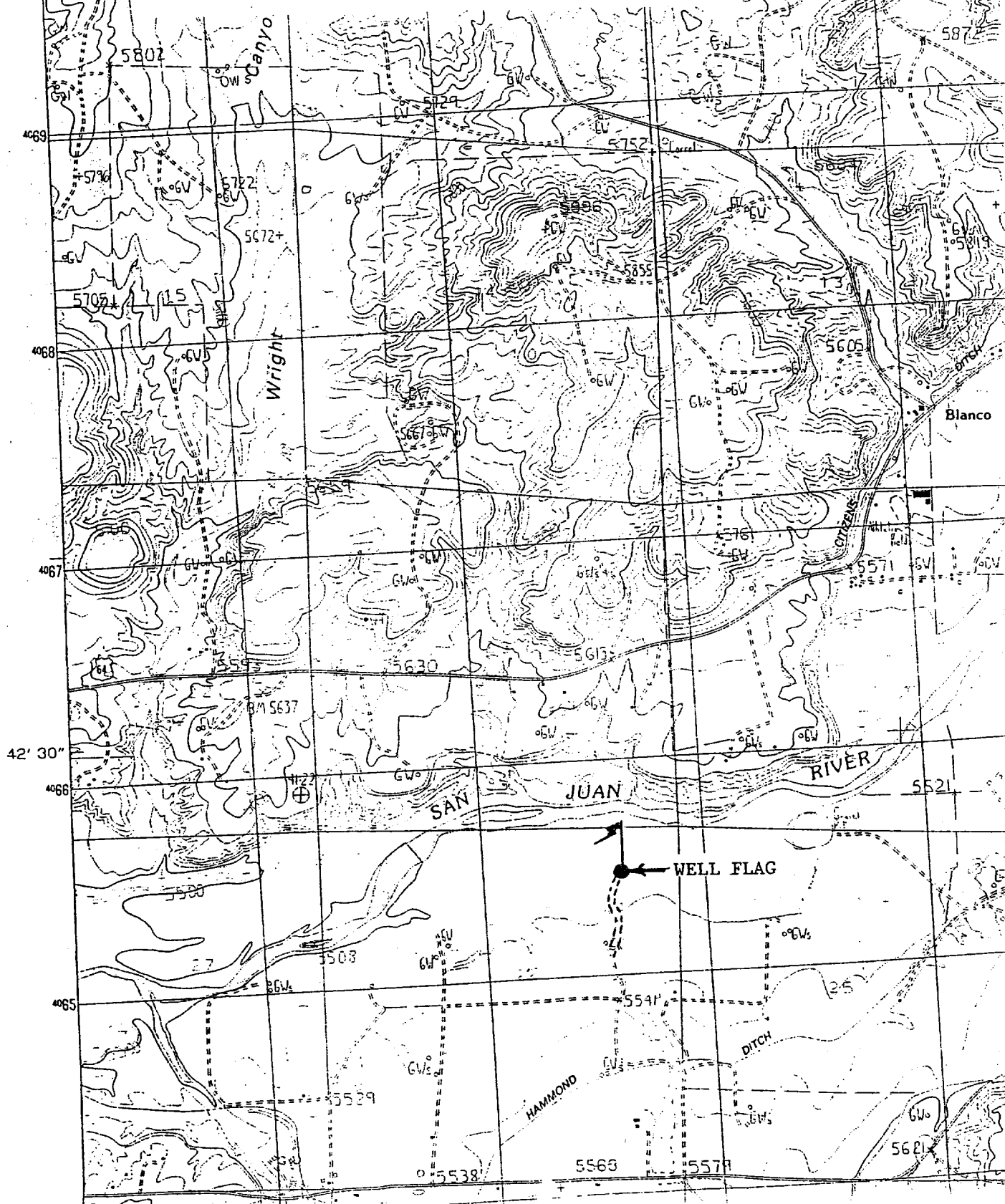
UL or lot no.	Section	Township	Range	Lot Idn	Feet from the	North/South line	Feet from the	East/West line	County
¹² Dedicated Acres 320 N/2		¹³ Joint or Infill		¹⁴ Consolidation Code		¹⁵ Order No.			

NO ALLOWABLE WILL BE ASSIGNED TO THIS COMPLETION UNTIL ALL INTERESTS HAVE BEEN CONSOLIDATED
OR A NON-STANDARD UNIT HAS BEEN APPROVED BY THE DIVISION

<div><p>16</p><p>FD B.L.M. BC 1999 N 86-20-22 W 1294.8' (M) LAT: 36°42'08" N. LONG: 107°50'54" W. 455' 840' 519' S 00-23-49 W 2368.8' (M) 26</p></div>	<div><p>17 OPERATOR CERTIFICATION</p><p>I hereby certify that the information contained herein is true and complete to the best of my knowledge and belief</p><p>Signature <u>Jeffrey W. Patton</u></p><p>Printed Name <u>JEFFREY W PATTON</u></p><p>Title <u>DRILLING ENGINEER</u></p><p>Date <u>4-1-01</u></p></div>
	<div><p>18 SURVEYOR CERTIFICATION</p><p>I hereby certify that the well location shown on this plat was plotted from field notes of actual surveys made by me or under my supervision, and that the same is true and correct to the best of my belief.</p><p>Date of Survey <u>3-09-01</u></p><p>Signature and Seal of Professional Surveyor <u>[Signature]</u></p><p>Certificate Number <u>8894</u></p></div>

CROSS TIMBERS OPERATING COMPANY
MCDANIEL GAS COM "B" #1R
NE/4 SEC. 26, T-29-N, R-10-W, N.M.P.M.,
SAN JUAN COUNTY, NEW MEXICO
665' FNL 840' FEL

4070000=N



BOP SCHEMATIC FOR DRILLING OPERATIONS CLASS 1 (2M) NORMAL PRESSURE

TESTING PROCEDURE

1. Test BOP after installation:

Pressure test BOP to 200-300
psig (low pressure) for 5 min.

Test BOP to Working Press or
to 70% internal yield of surf csg
(10 min).

2. Test operation of (both) rams
on every trip.

3. Check and record Accumulator
pressure on every tour.

4. Re-pressure test BOP stack after
changing out rams.

5. Have kelly cock valve with handle available.

6. Have safety valve and subs to fit all sizes of
drill string.

