

UNITED STATES
DEPARTMENT OF THE INTERIOR
BUREAU OF LAND MANAGEMENT

APPLICATION FOR PERMIT TO DRILL OR DEEPEN

1a. TYPE OF WORK

DRILL ☒DEEPEN ☐

b. TYPE OF WELL

OIL
WELL ☐GAS
WELL ☒

OTHER

SINGLE
ZONE ☐MULTIPLE
ZONE ☒2. NAME OF OPERATOR **AMOCO PRODUCTION COMPANY**
P.O. BOX 3092
HOUSTON , TX 77079

3. ADDRESS AND TELEPHONE NO.

MARY CORLEY
AUTHORIZED REPRESENTATIVEPHONE **281.366.4491** EXT:FAX: **281.366.0700**EMAIL: **corleyml@bp.com**

4. LOCATION OF WELL (Report location clearly and in accordance with any State requirements.)*

At Surface
2380FSL AND 1790FEL NWSE SEC 35 T29N R9W
At proposed prod. zone

14. DISTANCE IN MILES AND DIRECTION FROM THE NEAREST TOWN OR POST OFFICE

15 MILES FROM BLOOMFIELD, NM

15. DISTANCE FROM PROPOSED*

LOCATION TO NEAREST
PROPERTY OR LEASE LINE, FT.
(Also to nearest drg. unit line, if any)18. DISTANCE FROM PROPOSED LOCATION*
TO NEAREST WELL, DRILLING, COMPLETED,
OR APPLIED FOR, ON THIS LEASE FT.

16. NO. ACRES IN LEASE

306.35

19. PROPOSED DEPTH

6759 MD / TVD

17. NO. OF ACRES ASSIGNED

TO THIS WELL

306.35 15

20. ROTARY OR CABLE TOOLS

ROTARY

21. ELEVATIONS (Show whether DF, RT, GR, etc.)

5695 GL

22. APPROX. DATE WORK WILL START*

05/05/2001

23. PROPOSED CASING AND CEMENTING PROGRAM

SIZE OF HOLE	GRADE, SIZE OF CASING	WEIGHT PER FOOT	SETTING DEPTH	QUANTITY OF CEMENT

Notice of Staking Submitted 02/26/2001. Amoco Production Company respectfully request permission to drill the subject well to a total depth of approximately 6759', complete in the Basin Dakota Pool, produce the well for approximately 30 days to establish production rate, add the Blanco Mesaverde Pool and commingle production downhole. Application for downhole commingling authority (NMOCD order R-11363) will be submitted to all appropriate parties for approval after production has been established in the Basin Dakota Pool and prior to completion of and downhole commingling with the Blanco Mesaverde. In support of our application for permit to drill we have attached 8 documents (1 .doc and 7 .pdf files).

THIS ACTION IS SUBJECT TO BUREAU OF LAND MANAGEMENT
PROCEDURAL REVIEW PURSUANT TO 43 CFR 3100.3
AND APPEAL PURSUANT TO 43 CFR 3100.4.

IN ABOVE SPACE DESCRIBE PROPOSED PROGRAM: If proposal is to deepen, give data on present productive zone and proposed productive zone. If proposal is to drill or deepen directionally, give pertinent data on subsurface locations and measured and true vertical depths. Give blowout preventer program, if any.

24. ELECTRONIC SUBMISSION #3346 VERIFIED BY THE BLM WELL INFORMATION SYSTEM
FOR AMOCO PRODUCTION COMPANY SENT TO THE FARMINGTON FIELD OFFICESIGNED **MARY CORLEY**TITLE **AUTHORIZED REPRESENTATIVE**DATE **04/02/2001**

PERMIT NO. _____

APPROVAL DATE **5 / 2 / 01**

Application approval does not warrant or certify that the applicant holds legal or equitable title to those rights in the subject lease which would entitle the applicant to conduct operations thereon.
CONDITIONS OF APPROVAL, IF ANY:

APPROVED BY

/s/ Lee Ottani

TITLE

DATE

UNCLAS

HOLD C104 FOR Case 12672 hearing out

District I
PO Box 1980, Hobbs NM 88241-1980
District II
PO Drawer KK, Artesia, NM 87211-0719
District III
1000 Rio Brazos Rd., Aztec, NM 87410
District IV
PO Box 2088, Santa Fe, NM 87504-2088

State of New Mexico
Energy, Minerals & Natural Resources Department

OIL CONSERVATION DIVISION
PO Box 2088
Santa Fe, NM 87504-2088

Form C-102
Revised February 21, 1994
Instructions on back
Submit to Appropriate District Office
State Lease - 4 Copies
Fee Lease - 3 Copies

☐ AMENDED REPORT

WELL LOCATION AND ACREAGE DEDICATION PLAT

1 API Number 30-045-30619		2 Pool Code 71599 & 72319		3 Pool Name BASIN DAKOTA & BLANCO MESAVERDE	
4 Property Code 000518		5 Property Name Florance			6 Well Number # 117M
7 OGRID No. 000778		8 Operator Name AMOCO PRODUCTION COMPANY			9 Elevation 5695

10 Surface Location

UL or Lot No. J (Lot 10)	Section 35	Township 29 N	Range 9 W	Lot Idn	Feet from the 2380	North/South line SOUTH	Feet from the 1790	East/West line EAST	County SAN JUAN
-----------------------------	---------------	------------------	--------------	---------	-----------------------	---------------------------	-----------------------	------------------------	--------------------

11 Bottom Hole Location If Different From Surface

1 UL or lot no.	2 Section	3 Township	4 Range	5 Lot Idn	6 Feet from the	7 North/South line	8 Feet from the	9 East/West line	10 County
12 Dedicated Acres 306.35		13 Joint or Infill		14 Consolidation Code		15 Order No.			

NO ALLOWABLE WILL BE ASSIGNED TO THIS COMPLETION UNTIL ALL INTERESTS HAVE BEEN CONSOLIDATED
OR A NON-STANDARD UNIT HAS BEEN APPROVED BY THE DIVISION

16				17 OPERATOR CERTIFICATION			
				<p>I hereby certify that the information contained herein is true and complete to the best of my knowledge and belief.</p> <p>Signature: <i>Mary Corley</i></p> <p>Printed Name: MARY CORLEY</p> <p>Title: SR. REGULATORY ANALYST</p> <p>Date: 4-2-01</p>			
18 SURVEYOR CERTIFICATION							
<p>I hereby certify that the well location shown on this plat was plotted from field notes of actual surveys made by me or under my supervision, and that the same is true and correct to the best of my belief.</p> <p>Date of Survey: January 25, 2001</p> <p>Signature and Seal of Professional Surveyor: <i>[Signature]</i></p> <p>7016</p> <p>Certificate Number</p>							

District I
PO Box 1980, Hobbs NM 88241-1980
District II
PO Drawer KK, Artesia, NM 87211-0719
District III
1000 Rio Brazos Rd., Aztec, NM 87410
District IV
PO Box 2088, Santa Fe, NM 87504-2088

State of New Mexico
Energy, Minerals & Natural Resources Department

OIL CONSERVATION DIVISION
PO Box 2088
Santa Fe, NM 87504-2088

Form C-102
Revised February 21, 1994
Instructions on back
Submit to Appropriate District Office
State Lease - 4 Copies
Fee Lease - 3 Copies

☐ AMENDED REPORT

WELL LOCATION AND ACREAGE DEDICATION PLAT

¹ API Number 30-045-30619	² Pool Code 71599 & 72319	³ Pool Name BASIN DAKOTA & BLANCO MESAVERDE
⁴ Property Code 000518	⁵ Property Name Florance	⁶ Well Number # 117M
⁷ OGRID No. 000778	⁸ Operator Name AMOCO PRODUCTION COMPANY	⁹ Elevation 5695

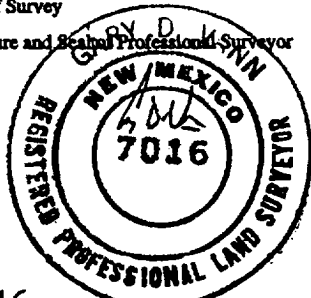
¹⁰ Surface Location

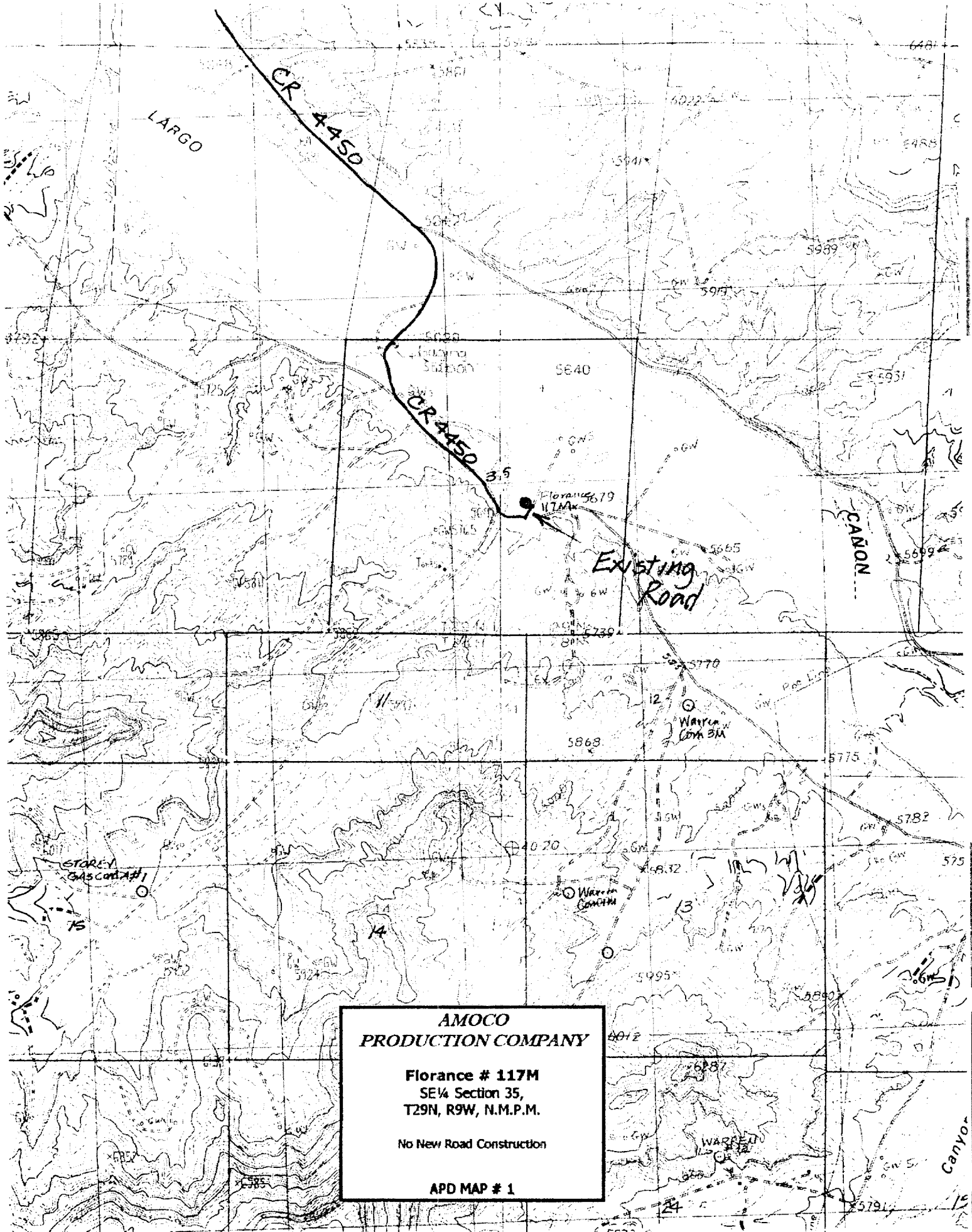
UL or Lot No.	Section	Township	Range	Lot Idn	Feet from the	North/South line	Feet from the	East/West line	County
J (Lot 10)	35	29 N	9 W		2380	SOUTH	1790	EAST	SAN JUAN

¹¹ Bottom Hole Location If Different From Surface

¹ UL or lot no.	Section	Township	Range	Lot Idn	Feet from the	North/South line	Feet from the	East/West line	County
¹² Dedicated Acres 306.35	¹³ Joint or Infill	¹⁴ Consolidation Code	¹⁵ Order No.						

NO ALLOWABLE WILL BE ASSIGNED TO THIS COMPLETION UNTIL ALL INTERESTS HAVE BEEN CONSOLIDATED
OR A NON-STANDARD UNIT HAS BEEN APPROVED BY THE DIVISION

¹⁶	5180(R)				¹⁷ OPERATOR CERTIFICATION
Lot 4	Lot 3	Lot 2	Lot 1		<i>Mary Corley</i> Signature MARY CORLEY Printed Name SR. REGULATORY ANALYST Title 4-2-01 Date
	Lot 6	Lot 7	Lot 8		
5141(R)	Lot 12	Lot 11	Lot 10	Lot 9	¹⁸ SURVEYOR CERTIFICATION I hereby certify that the well location shown on this plat was plotted from field notes of actual surveys made by me or under my supervision, and that the same is true and correct to the best of my belief. January 25, 2001 Date of Survey Signature and Seal of Professional Surveyor  7016 Certificate Number
	Lot 13	Lot 14	Lot 15	Lot 16	
2592(R)	2572(R)				



**AMOCO
PRODUCTION COMPANY**

Florance # 117M
SE 1/4 Section 35,
T29N, R9W, N.M.P.M.

No New Road Construction

APD MAP # 1

**AMOCO PRODUCTION COMPANY
DRILLING AND COMPLETION PROGRAM**

Prospect Name: Florance
Lease: FLORANCE
County: San Juan
State: New Mexico
Date: April 2, 2001

Well No: 117M
Surface Location: 35-29N-9W, 2380 FSL, 1790 FEL
Field: Blanco Mesaverde/Basin Dakota

OBJECTIVE: Drill 400' below the base of the Greenhorn Limestone, set 4" Liner across Dakota, Stimulate LS, CH, MF, PL and DK intervals

METHOD OF DRILLING		APPROXIMATE DEPTHS OF GEOLOGICAL MARKER			
TYPE OF TOOLS		Estimated GL: 5695		Estimated KB: 5709	
Rotary		0 - TD			
LOG PROGRAM		MARKER		SUBSEA	MEAS. DEPTH
TYPE		Ojo Alamo		4623	1086
OPEN HOLE		Fruitland Coal	*	3863	1846
GR-Induction		Pictured Cliffs	*	3608	2101
Density/Neutron		Lewis Shale	#	3515	2194
Sonic		Cliff House	#	1920	3790
CASED HOLE		Menefee Shale	#	1851	3859
GR-CCL-TDT		Point Lookout	#	1341	4369
CBL		Mancos		1203	4507
		Greenhorn		-585	6294
		Bentonite Marker		-650	6359
		Two Wells	#	-706	6415
		Dakota MB	#	-815	6524
		Burro Canyon	*	-990	6699
		Morrison	*	-1040	6749
		TOTAL DEPTH		-1050	6759
REMARKS:		# Probable completion interval		* Possible Pay	
- Please report any flares (magnitude & duration).					
SPECIAL TESTS		DRILL CUTTING SAMPLES		DRILLING TIME	
TYPE		FREQUENCY	DEPTH	FREQUENCY	DEPTH
None		10 feet	Production hole	Geolograph	0-TD
REMARKS:					

MUD PROGRAM:							
Approx. Interval			Type Mud	Weight, #/gal	Vis, sec/qt	W/L cc's/30 min	Other Specification
0	-	120-135	3 jts.	Spud	8.6-9.2		
120-135	-	1796	(1)(2)	Water/LSND	8.6-9.2		
1796	-	6359		Gas/Air/Mist	Volume sufficient to maintain a stable and clean wellbore		
6359		6759		LSND	8.6-9.2		

REMARKS:

- (1) The hole will require sweeps to keep unloaded while fresh water drilling. Let hole conditions dictate frequency.
(2) Top set Fruitland Coal to minimize lost circulation, air volume to maintain hole stability.

CASING PROGRAM: (Normally, tubular goods allocation letter specifies casing sizes to be used. Hole sizes will be governed by Contract)

Casing String	Estimated Depth	Casing Size	Grade	Weight	Hole Size	Landing Pt, Cmt, Etc.
Surface/Conductor	120-135	10 3/4"	J-55 ST&C	40.5#	14.75"	1
Intermediate 1	1796	7 5/8"	K-55 LT&C	26.4#	9.875"	1,2
Intermediate 2	6359	5 1/2"	K-55 LT&C	15.5#	6.75"	4
Production (liner)	6759	4"	K-55 H 511	11#	4.75"	3

REMARKS:

- (1) Circulate Cement to Surface
(2) Set casing 50' above Fruitland Coal
(3) Liner Lap should be a minimum of 100'
(4) Bring cement 200' above 7 5/8" shoe

CORING PROGRAM:

None

COMPLETION PROGRAM:

Rigless, 4-6 Stage Limited Entry Hydraulic Frac

GENERAL REMARKS:

Notify BLM/NMOCD 24 hours prior to Spud, BOP testing, and Casing and Cementing.

Form 46 Reviewed by: Logging program reviewed by: N/A

PREPARED BY:	APPROVED:	DATE:	
KAS/KAT		March 8, 2001	
Form 46 12-00 KAT		Version 1.0	

Cementing Program: FLORANCE 117M

	Surface	Intermediate	I2	Liner
Excess %, Bit	100%	80	50	10
Excess %, Caliper	NA	NA	NA	30
BHST (est deg. F)	60	120	150	160
Pipe Movement	NA	Rotate/Reciprocate	Rotate/Reciprocate	as per Liner Co.
Rate Max (bpm)	7	4	4	2
Rate Recommended (bpm)	6	4	3	2
Pressure, Max (psi)	200	2000	2000	2000
Shoe Joint	40	80	80	40
Batch Mix	NA	NA	NA	NA
Circulating prior cmting (hr)	0.5	1.5	2.5	2
Time Between Stages, (hr)	NA	NA	NA	NA
Special Instructions	1,6,7	1,6,8	1,6,9	2,3,4,6

1. Do not wash pumps and lines.
2. Wash pumps and lines.
3. Reverse out
4. Run Blend Test on Cement
5. Record Rate, Pressure, and Density on 3.5" disk
6. Confirm densitometer with pressurized mud scales
7. 1" cement to surface if cement is not circulated.
8. If cement is not circulated to surface, run temp. survey 10-12 hr. after landing plug.

Notes:

- *Do not wash up on top of plug. Wash lines before displacing liner cement job to minimize drillout.
- ** After cement set time the liner top will be drilled out and liner circulated clean with treated water.
- *** Run TMD cased hole logs to identify pay; Perforating and CH logs can be run rigless.

Surface:

Preflush	20 bbl.	FreshWater	
Slurry 1	120sx Class G Cement		139cuft
TOC@Surface	+ 2% CaCl ₂ (accelerator)		
	0.25 #/sk Cellophane Flake (lost circulation additive)		0.5563cuft/ft OH
	0.1% D46 antifoam		100% excess
Slurry Properties:	Density (lb/gal)	Yield (ft ³ /sk)	Water (gal/sk)
Slurry 1	15.8	1.16	4.95
Casing Equipment:	10-3/4", 8R, ST&C 1 Guide Shoe 1 Top Wooden Plug 1 Autofill insert float valve 4 Centralizers 1 Stop Ring 1 Thread Lock Compound		

**Amoco Production Company
BOP Pressure Testing Requirements**

Well Name: FLORANCE 117M
County: San Juan

State: New Mexico

Formation	TVD	Anticipated Bottom Hole Pressure	Maximum Anticipated Surface Pressure **
Ojo Alamo	1086		
Fruitland Coal	1846		
PC	2101		
Lewis Shale	2194		
Cliff House	3790	500	0
Menefee Shale	3859		
Point Lookout	4369	600	0
Mancos	4507		
Dakota	6415	2600	1609

**** Note: Determined using the following formula: $ABHP - (.22 * TVD) = ASP$**

Requested BOP Pressure Test Exception: 3000 PSI
--

**SAN JUAN BASIN
Dakota Formation
Pressure Control Equipment**

Background

The objective Dakota formation maximum surface pressure is anticipated to be less than 1000 PSI, based on shut-in surface pressures from adjacent wells. Pressure control equipment working pressure minimum requirements are therefore 2000 PSI. Equipment to be used will conform to API RP-53 (Figure 2.C.2) for a 2000 PSI system per Federal Onshore Order No. 2. Due to available conventional equipment within the area, 3000 PSI rated pressure control equipment will typically be utilized in a double ram type arrangement. Regional drilling rights to be utilized have substructure height limitations which exclude the use of annular preventers; therefore a rotating head will be installed above these rams. This pressure control equipment will be utilized for conventional drilling below conductor to total depth in the Basin Dakota. No abnormal temperature, pressure, or H₂S anticipated.

Equipment Specification

Interval

Below conductor casing to total depth

BOP Equipment

**11" nominal or 7 1/16", 3000 PSI
double ram preventer with rotating
head.**

All ram type preventers and related control equipment will be hydraulically tested to 250 PSI (low pressure) and 2000 PSI (high pressure), upon installation, following any repairs or equipment replacements, or at 30 day intervals. Accessories to BOP equipment will include kelly cock, upper kelly cock with a handle available, floor safety valves and choke manifold which will also be tested to equivalent pressure.