

UNITED STATES  
DEPARTMENT OF THE INTERIOR  
BUREAU OF LAND MANAGEMENT

FORM APPROVED  
Budget Bureau No. 1004-0135  
Expires: March 31, 1993

**SUNDRY NOTICES AND REPORTS ON WELLS**

Do not use this form for proposals to drill or to deepen or reentry to a different reservoir.  
Use "APPLICATION FOR PERMIT---" for such proposals

*SUBMIT IN TRIPLICATE*

5. Lease Designation and Serial No.  
SF080247 -A

6. If Indian, Allottee or Tribe Name

7. If Unit or CA, Agreement Designation

8. Well Name and No.

Simmons S 1C

9. API Well No.

30-045-30649

10. Field and Pool, or Exploratory Area

Blanco Mesa Verde

11. County or Parish, State

San Juan County, NM

1. Type of Well

☐ Oil ☒ Gas ☐ Other

2. Name of Operator

D.J. Simmons Co.

3. Address and Telephone No.

1009 Ridgeway Place, Suite 200, Farmington NM 87401 (505) 326-3753

4. Location of Well (Footage, Sec., T., R., M., or Survey Description)

Surface Location: 1050' FSL x 1080' FEL, Section 25, T29N, R9W  
BHL: 695' FSL x 1849' FEL, Section 25, T29N, R9W

12. CHECK APPROPRIATE BOX(s) TO INDICATE NATURE OF NOTICE, REPORT, OR OTHER DATA

TYPE OF SUBMISSION

☐ Notice of Intent

☒ Subsequent Report

☐ Final Abandonment Notice

TYPE OF ACTION

☐ Abandonment

☐ Recompletion

☐ Plugging Back

☐ Casing Repair

☐ Altering Casing

☒ Other Completion Operations

☐ Change of Plans

☐ New Construction

☐ Non-Routine Fracturing

☐ Water Shut-Off

☐ Conversion to Injection

☐ Dispose Water

(Note: Report results of multiple completion on Well Completion or Recompletion Report and Log form.)

13. Describe Proposed or Completed Operations (Clearly state all pertinent details, and give pertinent dates, including estimated date of starting any proposed work. If well is directionally drilled, give subsurface locations and measured and true vertical depth for all markers and zones pertinent to this work.)\*

Completion operations reports from 11/20/01 - 12/14/01 are attached.

14. I hereby certify that the foregoing is true and correct

Signed

Robert R. Griffiee

Title Operations Manager

Date: 12/30/01

(This space for Federal or State office use)

Approved by

Title

Date

Conditions of approval, if any:

Title 18 U.S.C. Section 1001, makes it a crime for any person knowingly and willfully to make to any department or agency of the United States any false, fictitious or fraudulent statements or representations as to any matter within its jurisdiction.

\*See Instruction on Reverse Side

---

**D.J. SIMMONS,  
INC.**

---

12/5/01

Clean and jet cement from rig pit. NU Blooie line. RU floor. PU bit and TIH on 2 3/8" tbg. Tag sand @ 3730'. Air package booster being repaired. Secure well, SDFN.

12/6/01

Rig on standby waiting for booster.

12/7/01

TIH with 10 stands. Clean out sand w/air mist to 4653'. Circulate sand out. TOH 11 stands. Secure well, SDFN.

12/08/01

SICP = 650 psi. TIH with 10 stands. Tag 60' of new fill. Clean out sand. Tag composite bridge plug at 4670'. Drill out plug in 25 minutes. Clean out sand. Secure well and SDFN.

12/10/01

SICP = 500psi. Blow well down. TIH and tag 40' of new fill @ 5000'. Clean out to 5247'. TOH with 25 stds. Flow well back, making gas & water. Rig up to flow back over night. 2 man flow back crew, flowed well all night.

12/11/01

Flow well natural 2 hrs. TIH, tag 40' of new fill. Clean out to 5273'. Circulate sand & water out of well bore. TOH with 24 stands. Rig up to flowback overnight. Flow well back all night.

12/12/01

RU pump, kill well w/3 bbls of 3% KCL. TIH and tag 30' of new fill. Clean out to 5372' with air/mist. TOH with 24 stands. RU to flow overnight.

12/13/01

Kill tubing with 3% KCL water. TIH, no fill. PU power swivel and clean out to 5372'. RD swivel. TOH and lay down bit. Install expendable check in tubing and seating nipple 1 jt from bottom. TIH 20 stands. Drain equip, secure well, SDFN.

12/14/01

SICP = 420 psi. Blow well down. TIH to 5373'. Circ w/ air mist. Lay down 19 joints of tubing. Land tubing at 4969' RKB. Pump off expendable check @725 psi. RD and move to Simmons E3C. Well released to production foreman. Note 151 total jts in well. SN 1 joint from bottom @ 4936'.

## **D.J. SIMMONS, INC.**

### **Simmons S1C Completion Reports**

11/20/01  
MIRU DJS Rig 111.

11/21/01, 11/23/01, 11/24/01, 11/26/01, 11/27/01  
Work on Rig

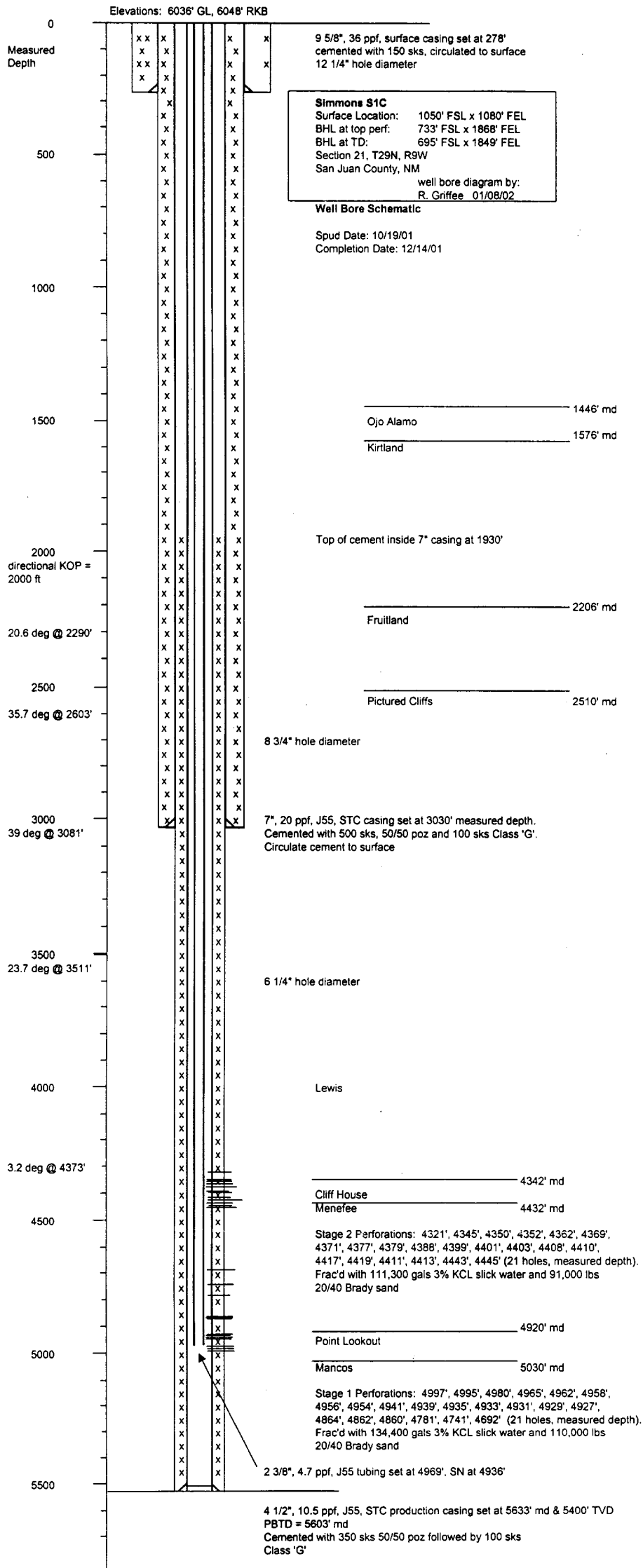
11/28/01  
PU bit, and 2 3/8" tubing. TIH and tag cement at 5406'.

11/29/01  
Pick up power swivel. Drill cement, float collar and cement to 5603'. RU Blue Jet. Ran CBL log from 5603 to 2800', good cement throughout. TOC 1930'. SDFN.

11/30/01  
RU Blue Jet. Ran GSL log from PBDT to 3000'. RD Blue Jet. PU casing scraper and TIH on tubing. SDFN.

12/03/01  
T.OH. Lay down scraper & bit. RU Blue Jet and check depths. Perforate First Stage, 21 holes, one each at 4997', 4995', 4980', 4965', 4962', 4958', 4956', 4954', 4941', 4939', 4935', 4933', 4931', 4929', 4927', 4864', 4862', 4860', 4781', 4741', and 4692'. Inspect gun. RD wireline for frac.  
Service rig, standby for Frac job

12/4/01  
RU American Energy and Stinger. Heated frac water overnight. Break down first stage perforations with 1500 gals of 15% HCL dropping 35 balls at 1 ball per bbl. Did not ball off. RU Blue Jet and ran junk basket to knock balls of perf's. Frac stage 1 with 134,400 gals 3% KCL slick water and 110,000 lbs of 20/40 Brady sand. Average pressure 1100 psi at 41 bpm. ISIP = vacuum. RU Blue Jet and set Weatherford composite plug @4670'. Pressure test plug to 3000 psi. Perforate Second Stage, 21 holes, one each at 4321', 4345', 4350', 4352', 4362', 4369', 4371', 4377', 4379', 4388', 4399', 4401', 4403', 4408', 4410', 4417', 4419', 4411', 4413', 4443', and 4445'. Break down second stage perforations with 1500 gals 15% HCL dropping 35 balls at 1 ball per bbl. RU Blue Jet and ran junk basket to knock balls off perf's. Frac Stage 2 with 131,040 gals 3% KCL slick water and 91,000 lbs of 20/40 Brady sand. Sanded off on 2# sand segment. Average pressure 2100 psi at 40 bpm. ISIP = 2300 psi. Rig down all equipment and SDFN.



*mtf*