

DISTRICT I  
1625 N. French Dr., Hobbs, NM 88240

DISTRICT II  
811 South Frist, Artesia, NM 88210

DISTRICT III  
1000 Rio Brazos Rd., Aztec, NM 87410

DISTRICT IV  
2040 South Pacheco, Santa Fe, NM 87505

State of New Mexico  
Energy, Minerals and Natural Resources

OIL CONSERVATION DIVISION

2040 South Pacheco  
Santa Fe, NM 87505

Form C-10

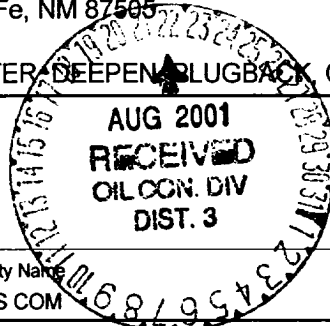
Revised March 25, 1999

Instructions on back  
Submit to Appropriate District Office  
State Lease - 6 Copie  
Fee Lease - 5 Copie

☐ AMENDED REPORT

APPLICATION FOR PERMIT TO DRILL, RE-ENTER, DEEPEN, PLUG BACK, OR ADD A ZONE

<sup>1</sup> Operator Name and Address Four Star Oil and Gas Co. 3300 N. Butler Ave, Ste100 Farmington NM 87401				<sup>2</sup> OGRID Number 131994
<sup>3</sup> API Number 30-045-30782				
<sup>4</sup> Property Code 17693		<sup>5</sup> Property Name KEYS COM		<sup>6</sup> Well No. 2



<sup>7</sup> Surface Location

UI or lot no	Section	Township	Range	Lot.Idn	Feet From The	North/South Line	Feet From The	East/West Line	County
L	32	29N	10W		1760	SOUTH	905	WEST	San Juan

<sup>8</sup> Proposed Bottom Hole Location If Different From Surface

UI or lot no	Section	Township	Range	Lot.Idn	Feet From The	North/South Line	Feet From The	East/West Line	County
<sup>9</sup> Proposed Pool 1 Chacra					<sup>10</sup> Proposed Pool 2				

<sup>11</sup> Work Type Code N	<sup>12</sup> WellType Code G	<sup>13</sup> Rotary or C.T. R	<sup>14</sup> Lease Type Code S	<sup>15</sup> Ground Level Elevation 5763'
<sup>16</sup> Multiple NO	<sup>17</sup> Proposed Depth 3200'	<sup>18</sup> Formation CHACRA	<sup>19</sup> Contractor KEY	<sup>20</sup> Spud Date 10/1/01

<sup>21</sup> Proposed Casing and Cement Program

SIZE OF HOLE	SIZE OF CASING	WEIGHT PER FOOT	SETTING DEPTH	SACKS OF CEMENT	EST. TOP
12-3/4"	8-5/8"	24#	350'	260	SURFACE
7-7/8"	4-1/2"	11.6#	3200'	665	SURFACE

<sup>22</sup> Describe the proposed program. If this application is to DEEPEN or PLUG BACK give the data on the present productive zone and proposed new productive zone. Describe the blowout prevention program, if any. Use additional sheets if necessary.

Four Star Oil and Gas Company proposes to drill this development well to a depth of 3200'. This well will test the productivity of the Chacra formation. If the well is unproductive, it will be plugged and abandoned as per state requirements.  
Bond coverage for this well is provided by State Bond NO. 247878

A threatened and endangered species survey has been performed.

<sup>23</sup> I hereby certify that the rules and regulations of the Oil Conservation Division have been complied with and that the information given above is true and complete to the best of my knowledge and belief.

Signature Arthur D. Archibeque

Printed Name Arthur D. Archibeque

Title Eng. Assistant

Date 8/22/01

Telephone 325-4397

OIL CONSERVATION DIVISION

Approved By: [Signature]

Title: DEPUTY OIL & GAS INSPECTOR, DIST. 35

Approval Date: AUG 22 2001

Expiration Date: AUG 22 2002

Conditions of Approval:  
Attached

DISTRICT I  
P.O. Box 1980, Hobbs, N.M. 88241-1980

DISTRICT II  
P.O. Drawer DD, Artesia, N.M. 88211-0719

DISTRICT III  
1000 Rio Brazos Rd., Aztec, N.M. 87410

DISTRICT IV  
PO Box 2088, Santa Fe, NM 87504-2088

State of New Mexico  
Energy, Minerals & Natural Resources Department

OIL CONSERVATION DIVISION

P.O. Box 2088  
Santa Fe, NM 87504-2088

Form C-102

Revised February 21, 1994

Instructions on back

Submit to Appropriate District Office

State Lease - 4 Copies

Fee Lease - 3 Copies

☐ AMENDED REPORT

WELL LOCATION AND ACREAGE DEDICATION PLAT

<sup>1</sup> API Number 30-065-30782	<sup>2</sup> Pool Code 82329	<sup>3</sup> Pool Name otero Chacra
<sup>4</sup> Property Code 17693	<sup>5</sup> Property Name KEYS COM	<sup>6</sup> Well Number 2
<sup>7</sup> GRID No. 131994	<sup>8</sup> Operator Name FOUR STAR OIL & GAS	<sup>9</sup> Elevation 5763

<sup>10</sup> Surface Location

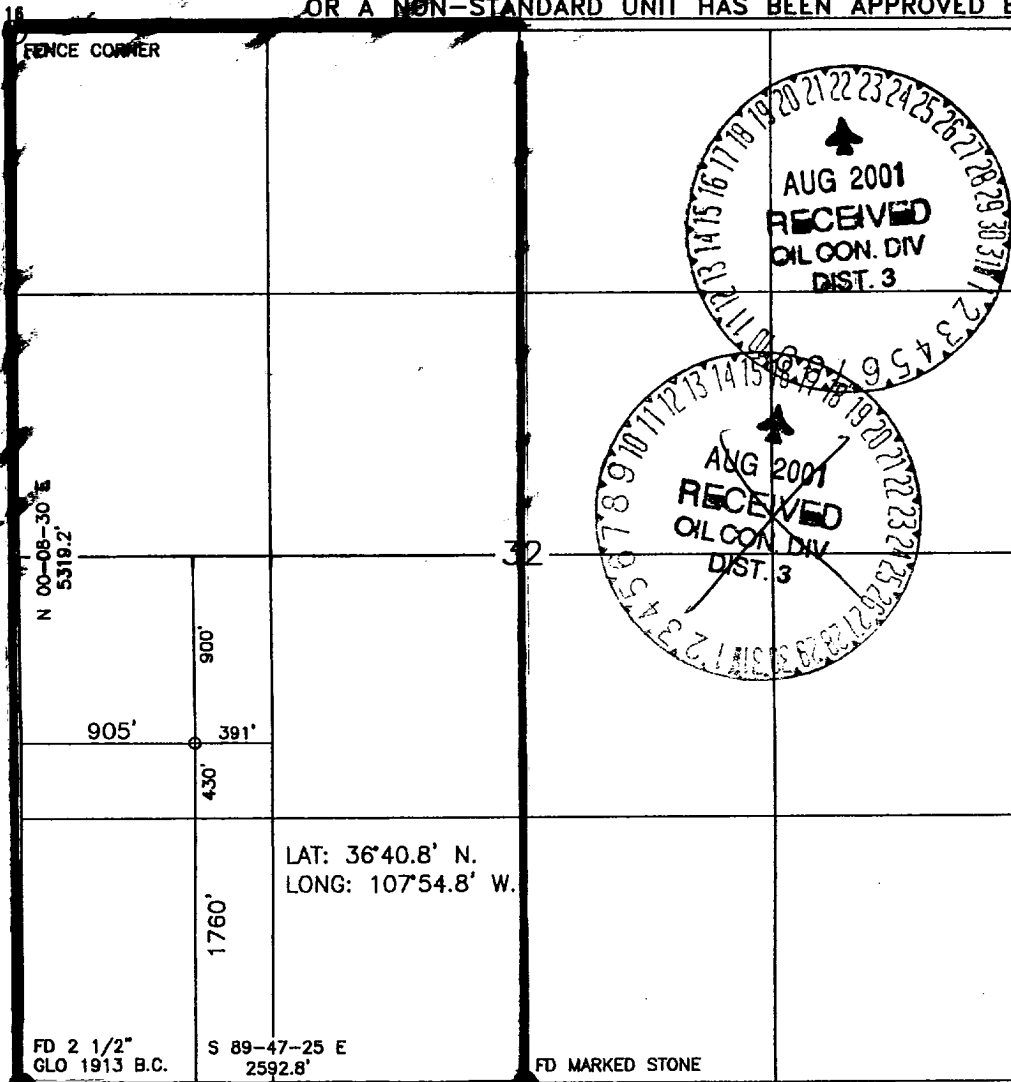
UL or lot no.	Section	Township	Range	Lot Idn	Feet from the	North/South line	Feet from the	East/West line	County
L	32	29-N	10-W		1760	SOUTH	905	WEST	SAN JUAN

<sup>11</sup> Bottom Hole Location If Different From Surface

UL or lot no.	Section	Township	Range	Lot Idn	Feet from the	North/South line	Feet from the	East/West line	County

<sup>12</sup> Dedicated Acres 160 <del>5/4</del> SW 4	<sup>13</sup> Joint or Infill	<sup>14</sup> Consolidation Code	<sup>15</sup> Order No.
--	-------------------------------	----------------------------------	-------------------------

NO ALLOWABLE WILL BE ASSIGNED TO THIS COMPLETION UNTIL ALL INTERESTS HAVE BEEN CONSOLIDATED  
OR A NON-STANDARD UNIT HAS BEEN APPROVED BY THE DIVISION



17

OPERATOR CERTIFICATION

I hereby certify that the information contained herein is true and complete to the best of my knowledge and belief

Arthur D. Archibegue  
Signature  
Arthur D. Archibegue  
Printed Name  
Engineer Assistant  
Title  
7/16/01  
Date

18 SURVEYOR CERTIFICATION

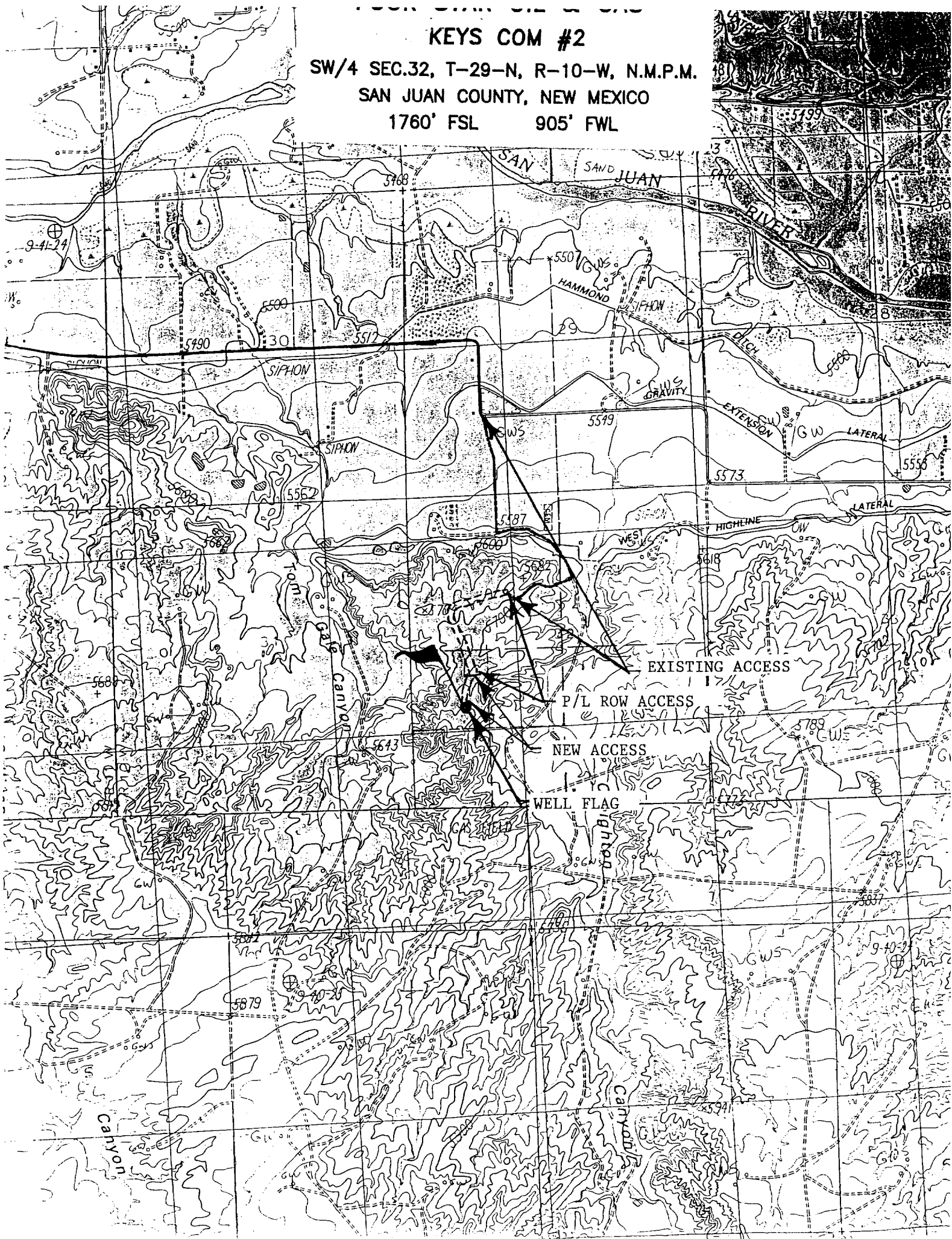
I hereby certify that the well location shown on this plat was plotted from field notes of actual surveys made by me or under my supervision, and that the same is true and correct to the best of my belief.

7-5-89 A. RUSH  
Date of Survey  
Signature and Seal of Professional Surveyor:  
8894  
PROFESSIONAL LAND SURVEYOR  
8894

Certificate Number

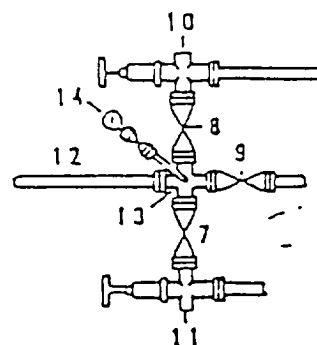
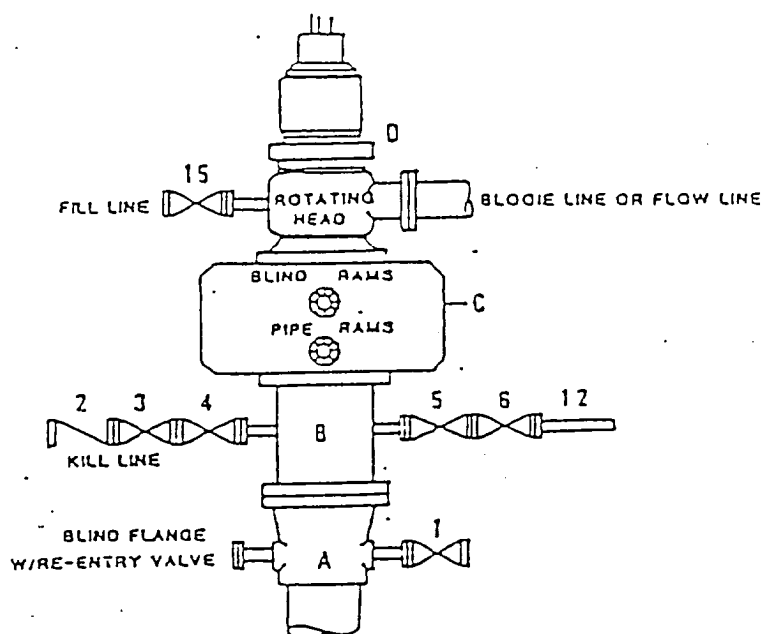
KEYS COM #2

SW/4 SEC.32, T-29-N, R-10-W, N.M.P.M.  
SAN JUAN COUNTY, NEW MEXICO  
1760' FSL 905' FWL



DRILLING CONTROL  
CONDITION II-B 3000 WP  
FOR AIR DRILLING OR  
WHERE NITROGEN OR AIR BLOWS ARE EXPECTED

H<sub>2</sub>S TRIM REQUIRED  
YES \_\_\_\_\_ NO \_\_\_\_\_



DRILLING CONTROL

MATERIAL LIST - CONDITION II - B

- |                |   |
|----------------|---|
| A              | Texaco Wellhead   |
| B              | 3000# W.P. drilling spool with a 2" minimum flanged outlet for kill line and 3" minimum flanged outlet for choke line.  |
| C              | 3000# W.P. Dual ram type preventer, hydraulic operated with 1" steel, 3000# W.P. control lines (where sub-structure height is adequate, 2 - 3000# W.P. single ram type preventers may be utilized). |
| D              | Rotating Head with fill up outlet and extended Bloodie Line.  |
| 1,3,4,<br>7,8, | 2" minimum 3000# W.P. flanged full opening steel gate valve, or Halliburton Lo Torc Plug valve.   |
| 2              | 2" minimum 3000# W.P. back pressure valve.  |
| 5,6,9          | 3" minimum 3000# W.P. flanged full opening steel gate valve, or Halliburton Lo Torc Plug valve.   |
| 12             | 3" minimum schedule 80, Grade "H", seamless line pipe.  |
| 13             | 2" minimum x 3" minimum 3000# W.P. flanged cross.   |
| 10,11          | 2" minimum 3000# W.P. adjustable choke bodies.  |
| 14             | Cameron Mud Gauge or equivalent (location optional in choke line).  |
| 15             | 2" minimum 3000# W.P. flanged or threaded full opening steel gate valve, or Halliburton Lo Torc Plug valve.   |

BTJ

TEXACO, INC.  
DALLAS, TEXAS

BTJ