

District I
PO Box 1980, Hobbs, NM 88241-1980
District II
811 S. 1st Street, Artesia, NM 88210-2834
District III
1000 Rio Brazos Rd., Aztec, NM 87410
District IV
2040 South Pacheco, Santa Fe, NM 87505

OIL CONSERVATION DIVISION
2040 South Pacheco
Santa Fe, NM 87505

☐ AMENDED REPORT

APPLICATION FOR PERMIT TO DRILL, RE-ENTER, DEEPEN, PLUGBACK, OR ADD A ZONE

¹ Operator name and Address Cross Timbers Operating Company 2700 Farmington Ave., Bldg. K. Ste 1 Farmington, NM 87401		² OGRID Number 167067
⁴ Property Code 22611		³ API Number 30-0 45-30834
⁵ Property Name Garcia Gas Com "B"		⁶ Well No. #1M

⁷ Surface Location

UL or lot no.	Section	Township	Range	Lot. Idn	Feet from the	North/South Line	Feet from the	East/West line	County
0	21	29N	10W		805'	South	1,730'	East	San Juan

⁸ Proposed Bottom Hole Location If Different From Surface

UL or lot no.	Section	Township	Range	Lot. Idn	Feet from the	North/South Line	Feet from the	East/West line	County
⁹ Proposed Pool 1 Basin Dakota					¹⁰ Proposed Pool 2 Blanco Mesaverde				

¹¹ Work Type Code N	¹² Well Type Code G	¹³ Cable/Rotary R	¹⁴ Lease Type Code P (private)	¹⁵ Ground Level Elevation 5,518' Ground Level
¹⁶ Multiple Yes	¹⁷ Proposed Depth 6,875'	¹⁸ Formation Dakota	¹⁹ Contractor Bearcat Drilling	²⁰ Spud Date Oct, 2001

²¹ Proposed Casing and Cement Program

Hole Size	Casing Size	Casing weight/foot	Setting Depth	Sacks of Cement	Estimated TOC
12-1/4"	9-5/8"	36.0 #/ft	160'	+100 sx	Surface
8-3/4"	7"	20.0 #/ft	3,500'	+400 sx	Surface
6-1/4"	4-1/2"	10.5 #/ft	6,875'	+290 sx	3,000'

²² Describe the proposed program. If this application is to DEEPEN or PLUG BACK give the data on the present productive zone and proposed new productive zone. Describe the blowout prevention program, if any. Use additional sheets if necessary

Dr1 to 160' Run new 9-5/8" csg. Cmt csg w/100 sx cl "B" cmt (15.6 ppg, 1.18 cuft/sx) w/2% CaCl & 1/4# Celloflake. Attempt to circ cmt to surface. NU BOP. Test BOP. Mix mud. Drill ahead w/8-3/4" hole to 3,500'. Run new 7" csg. Cmt csg w/400 sx Premium Lite HS cmt (12.5 ppg, 2.00 cuft/sx). Attempt to cmt to surf.
Dr1 to TD (@ 6,875'). Log well. Run new 4-1/2" csg to btm. Cmt csg with approx +-290 sx Premium Lite HS cement (12.5 ppg, 2.00 cuft/sx). Est top of cmt @ 3,000'.
See enclosed drawing for BOP stack configuration.

²³ I hereby certify that the information given above is true and complete to the best of my knowledge and belief.

Signature:

Jeffrey W. Patton

Printed name: Jeffrey W. Patton 9/17/01

Title: Drilling Engineer

OIL CONSERVATION DIVISION

Approved by:

Title: DEPUTY OIL & GAS INSPECTOR, DIST. 4

Approval Date: SEP 20 2001

Expiration Date: SEP 20 2002

6

DISTRICT I
1625 N. French Dr., Hobbs, N.M. 88240

REC'D / SAN JUAN

State of New Mexico
Energy, Minerals & Natural Resources Department

Form C-102
Revised August 15, 2000

DISTRICT II
811 South First, Artesia, N.M. 88210

AUG 21 2001

Submit to Appropriate District Office
State Lease - 4 Copies
Fee Lease - 3 Copies

DISTRICT III
1000 Rio Brazos Rd., Aztec, N.M. 87410

OIL CONSERVATION DIVISION

2040 South Pacheco
Santa Fe, NM 87505

☐ AMENDED REPORT

DISTRICT IV
2040 South Pacheco, Santa Fe, NM 87505

WELL LOCATION AND ACREAGE DEDICATION PLAT

¹ API Number 30-045-30834	² Pool Code 71599	³ Pool Name BASIN DAKOTA
⁴ Property Code 22611	⁵ Property Name GARCIA GAS COM B	⁶ Well Number 1M
⁷ GRID No. 167067	⁸ Operator Name XTO ENERGY INC.	⁹ Elevation 5518'

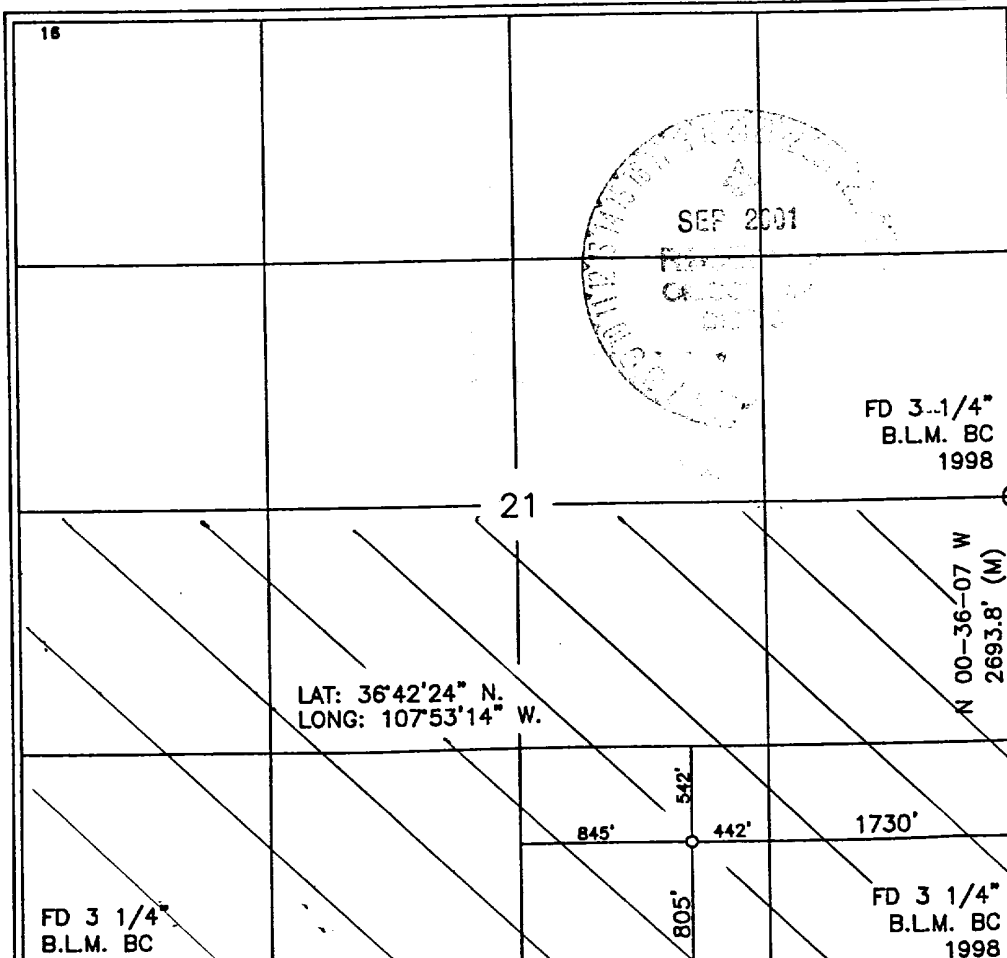
¹⁰ Surface Location

UL or lot no.	Section	Township	Range	Lot Idn	Feet from the	North/South line	Feet from the	East/West line	County
0	21	29-N	10-W		805'	SOUTH	1730'	EAST	SAN JUAN

¹¹ Bottom Hole Location If Different From Surface

UL or lot no.	Section	Township	Range	Lot Idn	Feet from the	North/South line	Feet from the	East/West line	County
¹² Dedicated Acres 320 S/2		¹³ Joint or Infill		¹⁴ Consolidation Code		¹⁵ Order No.			

NO ALLOWABLE WILL BE ASSIGNED TO THIS COMPLETION UNTIL ALL INTERESTS HAVE BEEN CONSOLIDATED
OR A NON-STANDARD UNIT HAS BEEN APPROVED BY THE DIVISION



17 OPERATOR CERTIFICATION

I hereby certify that the information contained herein
is true and complete to the best of my knowledge and
belief

Signature Jeffrey W. Patton
Printed Name JEFFREY W. PATTON
Title DRILLING ENGINEER
Date 9-17-01

18 SURVEYOR CERTIFICATION

I hereby certify that the well location shown on this plat
was plotted from field notes of actual surveys made by
me or under my supervision and that the same is true
and correct to the best of my knowledge and belief

Date of Survey 8-13-01
Signature and Seal of Professional Surveyor [Signature]
Certificate Number 8894

DISTRICT I
1625 N. French Dr., Hobbs, N.M. 88240

DISTRICT II
811 South First, Artesia, N.M. 88210

DISTRICT III
1000 Rio Brazos Rd., Aztec, N.M. 87410

DISTRICT IV
2040 South Pacheco, Santa Fe, NM 87505

REC'D / SAN JUAN State of New Mexico
Energy, Minerals & Natural Resources Department

AUG 21 2001

Form C-102
Revised August 15, 2000

Submit to Appropriate District Office
State Lease - 4 Copies
Fee Lease - 3 Copies

OIL CONSERVATION DIVISION

2040 South Pacheco
Santa Fe, NM 87505

☐ AMENDED REPORT

WELL LOCATION AND ACREAGE DEDICATION PLAT

¹ API Number 30-045-30834	² Pool Code 72319	³ Pool Name BLANCO MESAVERDE
⁴ Property Code 22611	⁵ Property Name GARCIA GAS COM B	⁶ Well Number 1M
⁷ OGRID No. 167067	⁸ Operator Name XTO ENERGY INC.	⁹ Elevation 5518'

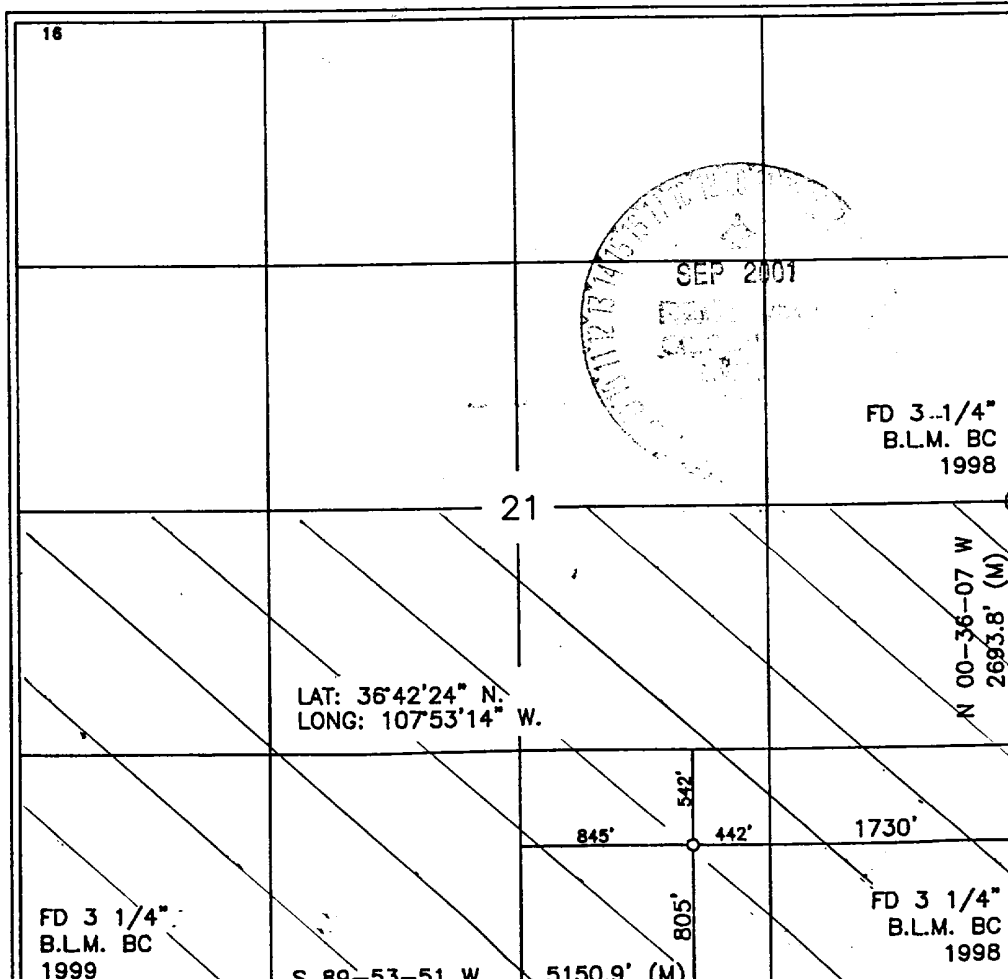
¹⁰ Surface Location

UL or lot no.	Section	Township	Range	Lot Idn	Feet from the	North/South line	Feet from the	East/West line	County
0	21	29-N	10-W		805'	SOUTH	1730'	EAST	SAN JUAN

¹¹ Bottom Hole Location If Different From Surface

UL or lot no.	Section	Township	Range	Lot Idn	Feet from the	North/South line	Feet from the	East/West line	County
¹² Dedicated Acres 320 5/2		¹³ Joint or Infill		¹⁴ Consolidation Code		¹⁵ Order No.			

NO ALLOWABLE WILL BE ASSIGNED TO THIS COMPLETION UNTIL ALL INTERESTS HAVE BEEN CONSOLIDATED
OR A NON-STANDARD UNIT HAS BEEN APPROVED BY THE DIVISION



17 OPERATOR CERTIFICATION

I hereby certify that the information contained herein
is true and complete to the best of my knowledge and
belief

Signature Jeffrey W. Patton
Printed Name JEFFREY W. PATTON
Title DRILLING ENGINEER
Date 9-17-01

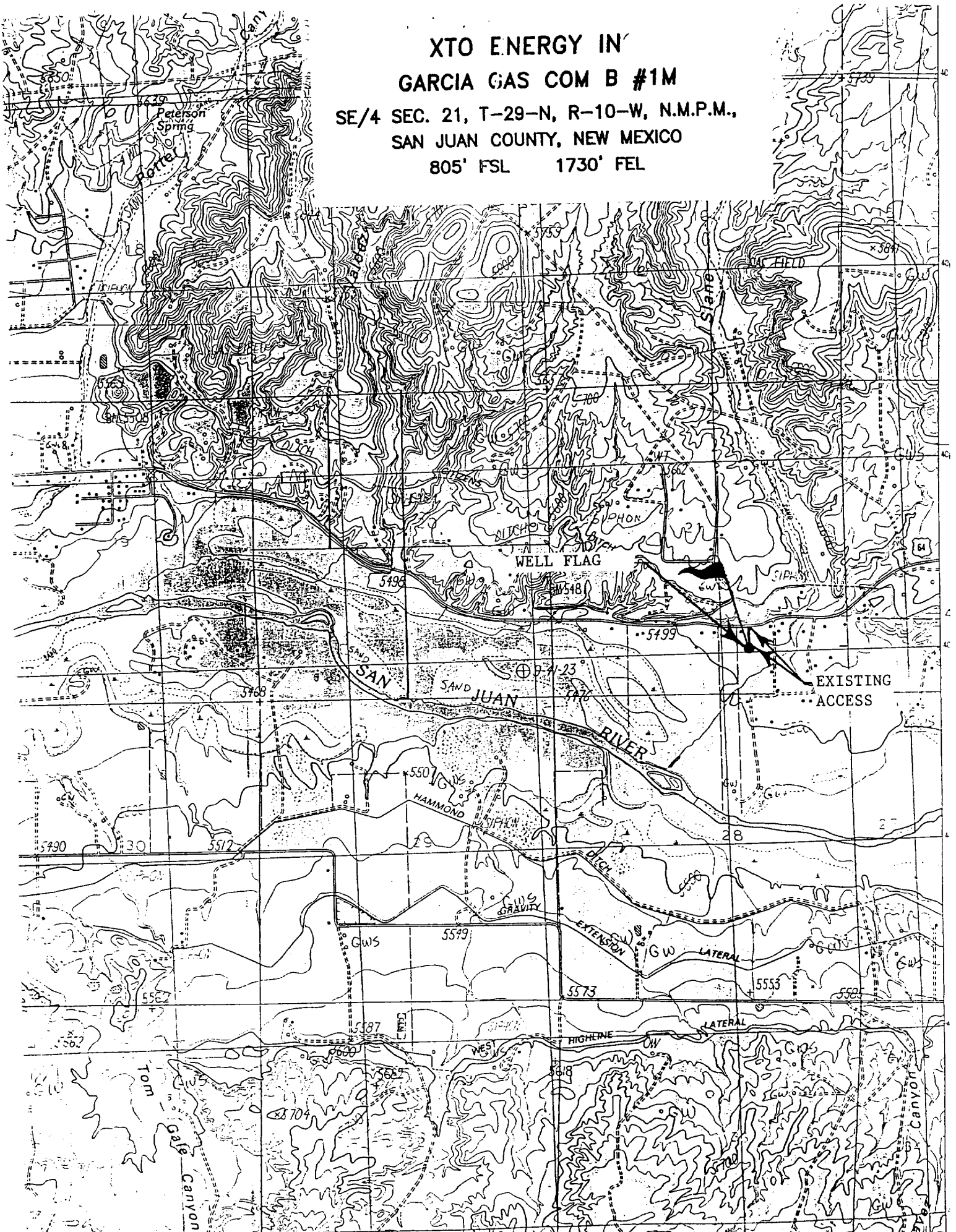
18 SURVEYOR CERTIFICATION

I hereby certify that the well location shown on this plat
was plotted from field notes of actual surveys made by
me or under my supervision and that the same is true
and correct to the best of my knowledge and belief

Date of Survey 8-13-01
Signature and Seal of Professional Surveyor [Signature]
Certificate Number 8894

XTO ENERGY IN
GARCIA GAS COM B #1M

SE/4 SEC. 21, T-29-N, R-10-W, N.M.P.M.,
SAN JUAN COUNTY, NEW MEXICO
805' FSL 1730' FEL





Cross Timbers Operating Company

BOP SCHEMATIC FOR DRILLING OPERATIONS CLASS 1 (2M) NORMAL PRESSURE

