

District I  
PO Box 1980, Hobbs, NM 88241-1980  
District II  
811 S. 1st Street, Artesia, NM 88210-2834  
District III  
1000 Rio Brazos Rd., Aztec, NM 87410  
District IV  
2040 South Pacheco, Santa Fe, NM 87505

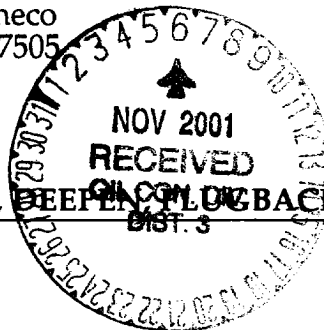
Energy, Minerals & Natural Resources Department

Revised October 18, 199

OIL CONSERVATION DIVISION

2040 South Pacheco  
Santa Fe, NM 87505

Instructions on bac  
Submit to Appropriate District O  
State Lease - 6 Copie  
Fee Lease - 5 Copie



☐ AMENDED REPORT

APPLICATION FOR PERMIT TO DRILL, RE-ENTER, ~~DEEPEN~~ PLUG BACK, OR ADD A ZONE

XTO ENERGY INC. 2700 FARMINGTON AVENUE SUITE K-1 FARMINGTON, NM 87401	<sup>1</sup> Operator name and Address	<sup>2</sup> OGRID Number 167067
		<sup>3</sup> API Number 30-0 45-30932
	<sup>4</sup> Property Code 29078	<sup>5</sup> Property Name Armenta Gas Com "G"

<sup>7</sup> Surface Location									
UL or lot no.	Section	Township	Range	Lot. Idn	Feet from the	North/South Line	Feet from the	East/West line	County
H	27	29 N	10 W		2,254'	North	698'	East	San Juan

<sup>8</sup> Proposed Bottom Hole Location If Different From Surface

UL or lot no.	Section	Township	Range	Lot. Idn	Feet from the	North/South Line	Feet from the	East/West line	County

<sup>9</sup> Proposed Pool 1 Basin Fruitland Coal	<sup>10</sup> Proposed Pool 2
--	-------------------------------

<sup>11</sup> Work Type Code N	<sup>12</sup> Well Type Code G	<sup>13</sup> Cable/Rotary Rotary	<sup>14</sup> Lease Type Code Fee	<sup>15</sup> Ground Level Elevation 5,512'
<sup>16</sup> Multiple No	<sup>17</sup> Proposed Depth 1,950'	<sup>18</sup> Formation Fruitland Coal	<sup>19</sup> Contractor Stewart Bros. Drlg	<sup>20</sup> Spud Date Est 12/01

<sup>21</sup> Proposed Casing and Cement Program

Hole Size	Casing Size	Casing weight/foot	Setting Depth	Sacks of Cement	Estimated TOC
8-3/4"	7"	20#, J-55, STC	200' —	50	Surface
6-1/4"	4-1/2"	10.5#, J-55, STC	1,950' —	125	Surface —

<sup>22</sup> Describe the proposed program. If this application is to DEEPEN or PLUG BACK give the data on the present productive zone and proposed new productive zone. Describe the blowout prevention program, if any. Use additional sheets if necessary

Surface: 50 sacks of Class "B" cement containing 2% CaCl<sub>2</sub> & 1/4 pps celloflake (14.8 ppg, 1.34 cuft/sx). Circulate cement to surface.  
Production: 125 sx type III Premium Lite FM (65%/35%/6%) with 1/4 #/sx celloflake & 2% CaCl<sub>2</sub> (12.5 ppg & 2.01 cuft/sx)  
Remarks: use 25% excess over volume calculated from open hole logs to bring TOC to surface.  
BOP program: 11" x 3000 psig double ram BOP.

<sup>23</sup> I hereby certify that the information given above is true and complete to the best of my knowledge and belief.

Signature:

*Jeffrey W. Patton*

Printed name: Jeffrey W. Patton

Title: Drilling Engineer

OIL CONSERVATION DIVISION

Approved by:

Title: DEPUTY OIL & GAS INSPECTOR, DIST. 3

Approval Date:

NOV - 6 2001

Expiration Date:

NOV - 6 2002

DISTRICT I  
1625 N. French Dr., Hobbs, N.M. 88240

DISTRICT II  
811 South First, Artesia, N.M. 88210

DISTRICT III  
1000 Rio Brazos Rd., Aztec, N.M. 87410

DISTRICT IV  
2040 South Pacheco, Santa Fe, NM 87505

State of New Mexico  
Energy, Minerals & Natural Resources Department

OIL CONSERVATION DIVISION

2040 South Pacheco  
Santa Fe, NM 87505

Form C-1  
Revised August 15, 2001

Submit to Appropriate District Office  
State Lease - 4 Cops.  
Fee Lease - 3 Cops.

☐ AMENDED REPORT

WELL LOCATION AND ACREAGE DEDICATION PLAT

<sup>1</sup> API Number 30045-30932	<sup>2</sup> Pool Code 71629	<sup>3</sup> Pool Name BASIN FRUITLAND COAL
<sup>4</sup> Property Code 29078	<sup>5</sup> Property Name ARMENTA GAS COM G	<sup>6</sup> Well Number 1
<sup>7</sup> OGED No. 167067	<sup>8</sup> Operator Name XTO ENERGY INC.	<sup>9</sup> Elevation 5512'

<sup>10</sup> Surface Location

UL or lot no.	Section	Township	Range	Lot Idn	Feet from the	North/South line	Feet from the	East/West line	County
H	27	29-N	10-W		2254	NORTH	698	EAST	SAN JUAN

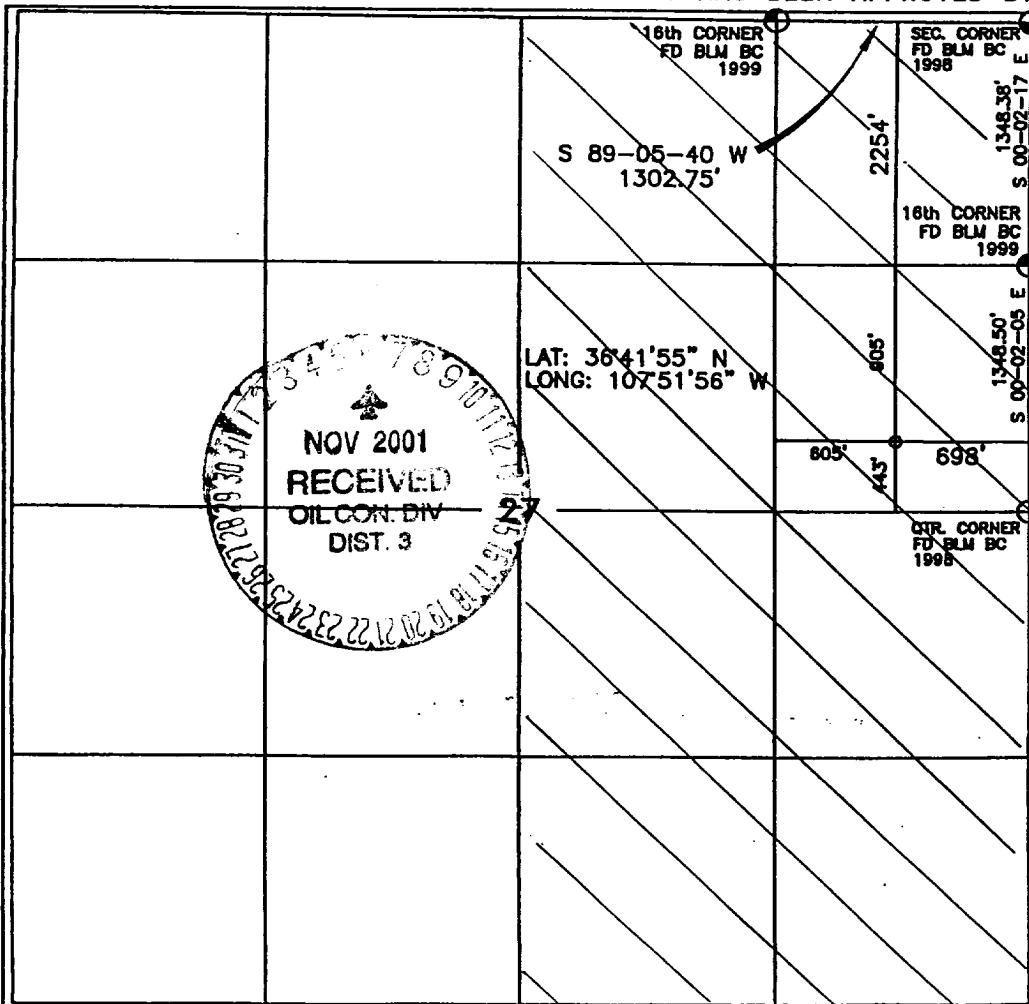
<sup>11</sup> Bottom Hole Location If Different From Surface

UL or lot no.	Section	Township	Range	Lot Idn	Feet from the	North/South line	Feet from the	East/West line	County

<sup>12</sup> Dedicated Acres 320.00 E/2	<sup>13</sup> Joint or Infill	<sup>14</sup> Consolidation Code	<sup>15</sup> Order No.
---	-------------------------------	----------------------------------	-------------------------

NO ALLOWABLE WILL BE ASSIGNED TO THIS COMPLETION UNTIL ALL INTERESTS HAVE BEEN CONSOLIDATED OR A NON-STANDARD UNIT HAS BEEN APPROVED BY THE DIVISION

16



17 OPERATOR CERTIFICATION

I hereby certify that the information contained herein is true and complete to the best of my knowledge and belief.

Signature Jeffrey W. Patton

Printed Name JEFFREY W. PATTON

Title DRILLING ENGINEER

Date 11-2-01

18 SURVEYOR CERTIFICATION

I hereby certify that the well location shown on this plat was plotted from field notes of actual surveys made by me or under my supervision, and that the same is true and correct to the best of my knowledge.

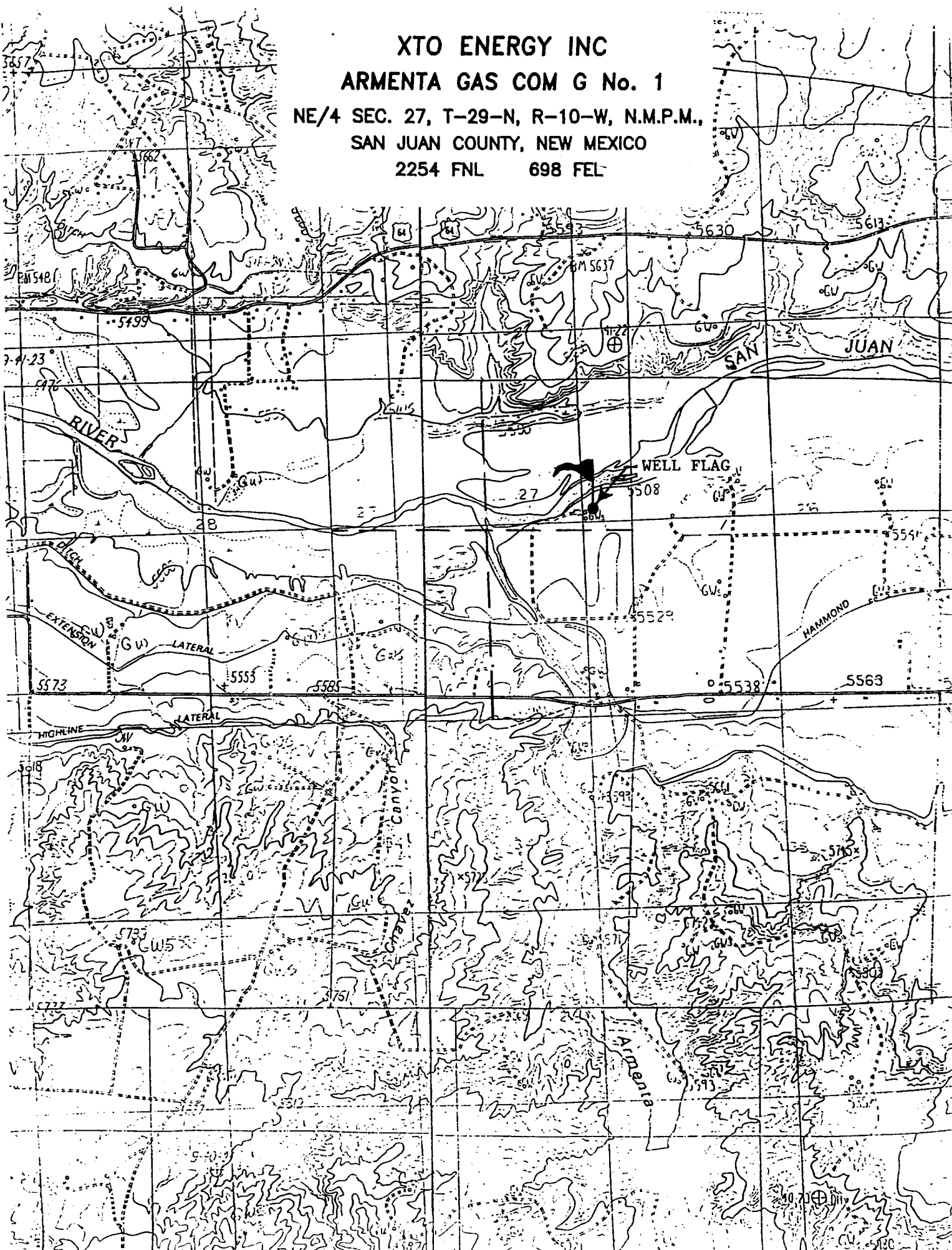
Date of Survey 11-2-01  
Signature and Seal of Professional Surveyor

Jeffrey W. Patton

8894

Certificate Number

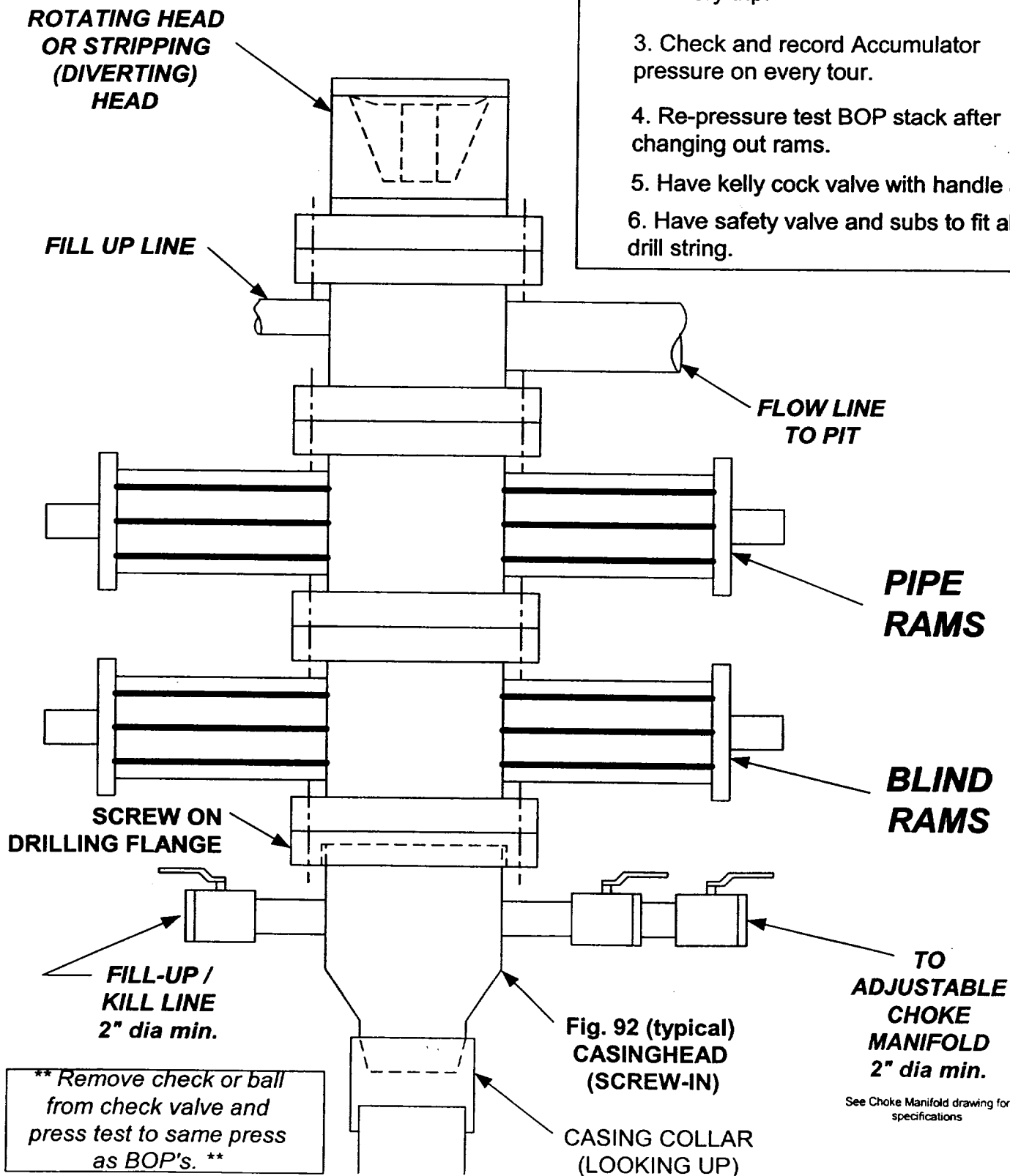
**XTO ENERGY INC**  
**ARMENTA GAS COM G No. 1**  
**NE/4 SEC. 27, T-29-N, R-10-W, N.M.P.M.,**  
**SAN JUAN COUNTY, NEW MEXICO**  
**2254 FNL 698 FEL**





**Cross Timbers Operating Company**

## **BOP SCHEMATIC FOR DRILLING OPERATIONS CLASS 1 (2M) NORMAL PRESSURE**



### **1. Test BOP after installation:**

Pressure test BOP to 200-300 psig (low pressure) for 5 min.

Test BOP to Working Press or to 70% internal yield of surf csg (10 min).

2. Test operation of (both) rams on every trip.

3. Check and record Accumulator pressure on every tour.

4. Re-pressure test BOP stack after changing out rams.

5. Have kelly cock valve with handle available.

6. Have safety valve and subs to fit all sizes of drill string.

**TESTING  
PROCEDURE**