

District I  
1625 N. French Dr., Hobbs, NM 88240  
District II  
811 South First, Artesia, NM 88210  
District III  
1000 Rio Brazos Road, Aztec, NM 87410  
District IV  
1220 S. St. Francis Dr., Santa Fe, NM 87505

State of New Mexico  
Energy Minerals and Natural Resources

Oil Conservation Division  
1220 South St. Francis Dr.  
Santa Fe, NM 87505

Form C-101  
Revised March 17, 1999

Submit to appropriate District Office  
State Lease - 6 Copies  
Fee Lease - 5 Copies

☐ AMENDED REPORT

APPLICATION FOR PERMIT TO DRILL, RE-ENTER, DEEPEN, PLUGBACK, OR ADD A ZONE

<sup>1</sup> Operator Name and Address <b>Richardson Operating Company (303) 830-8000 1700 Lincoln St., Suite 1700, Denver, Co. 80203</b>		<sup>2</sup> OGRID Number <b>19219</b>
<sup>3</sup> Property Code <b>29133</b>	<sup>4</sup> Property Name <b>Ropco 16</b>	<sup>5</sup> API Number <b>30-045-30993</b>
		<sup>6</sup> Well No. <b>2</b>

<sup>7</sup> Surface Location									
UL or lot no.	Section	Township	Range	Lot Idn	Feet from the	North/South line	Feet from the	East/West line	County
<b>C</b>	<b>16</b>	<b>29n</b>	<b>14w</b>		<b>1186</b>	<b>North</b>	<b>1392</b>	<b>West</b>	<b>SJ</b>

<sup>8</sup> Proposed Bottom Hole Location If Different From Surface									
UL or lot no.	Section	Township	Range	Lot Idn	Feet from the	North/South line	Feet from the	East/West line	County

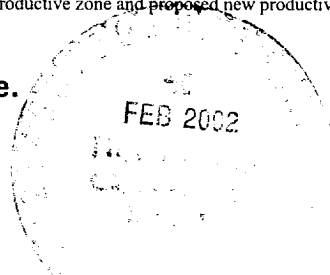
<sup>9</sup> Proposed Pool 1 <b>Twin Mounds Picture Cliffs Ext.</b>	<sup>10</sup> Proposed Pool 2
--	-------------------------------

<sup>11</sup> Work Type Code <b>N</b>	<sup>12</sup> Well Type Code <b>G</b>	<sup>13</sup> Cable/Rotary <b>R</b>	<sup>14</sup> Lease Type Code <b>S</b>	<sup>15</sup> Ground Level Elevation <b>5190'</b>
<sup>16</sup> Multiple <b>No</b>	<sup>17</sup> Proposed Depth <b>1,050'</b>	<sup>18</sup> Formation <b>Lewis</b>	<sup>19</sup> Contractor	<sup>20</sup> Spud Date <b>3-1-02</b>

<sup>21</sup> Proposed Casing and Cement Program					
Hole Size	Casing Size	Casing weight/foot	Setting Depth	Sacks of Cement	Estimated TOC
<b>8-3/4"</b>	<b>7"</b>	<b>20</b>	<b>120'</b>	<b>60 sx</b>	<b>Surface</b>
<b>6-1/4"</b>	<b>4-1/2"</b>	<b>10.5</b>	<b>1,050'</b>	<b>145 sx</b>	<b>Surface</b>

<sup>22</sup> Describe the proposed program. If this application is to DEEPEN or PLUG BACK, give the data on the present productive zone and proposed new productive zone.  
Describe the blowout prevention program, if any. Use additional sheets if necessary.

**Will use 2000# BOP and run logs and DST as appropriate.**



<sup>23</sup> I hereby certify that the information given above is true and complete to the best of my knowledge and belief. Signature: <i>Brian Wood</i>		OIL CONSERVATION DIVISION <i>Se</i>	
Printed name: <b>Brian Wood</b>		Approved by: <i>[Signature]</i>	
Title: <b>Consultant</b>		Title: <b>DEPUTY OIL &amp; GAS INSPECTOR, DIST. #2</b>	
Date: <b>Feb. 9, 2002</b>		Approval Date: <b>FEB 11 2002</b> Expiration Date: <b>FEB 11 2003</b>	
Phone: <b>(505) 466-8120</b>		Conditions of Approval: Attached <input type="checkbox"/>	

State of New Mexico  
Energy, Minerals & Mining Resources Department  
OIL CONSERVATION DIVISION  
2040 South Pacheco  
Santa Fe, NM 87505

Form C - 102

☐ AMENDED REPORT

WELL LOCATION AND ACREAGE DEDICATION PLAT

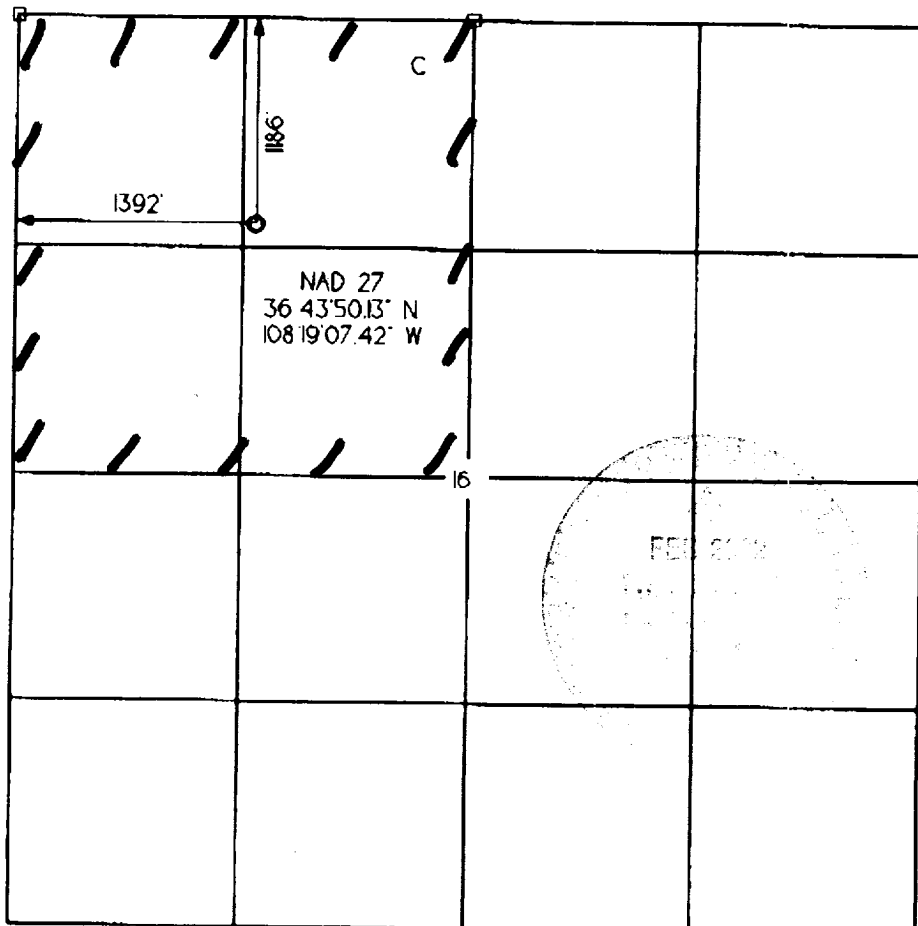
APA Number <b>30-045-30993</b>	Pool Code <b>86620</b>	Pool Name <b>TWIN MOUNDS PICTURED CLIFFS</b>
Property Code <b>24133</b>	Property Name <b>ROPCO 16</b>	Well Number <b>2</b>
OGRID No. <b>019219</b>	Operator Name <b>RICHARDSON OPERATING COMPANY</b>	Elevation <b>5190'</b>

Surface Location									
UL or Lot <b>C</b>	Sec. <b>16</b>	Twp. <b>29 N.</b>	Rge. <b>14 W.</b>	Lot Idn.	Feet From <b>1186'</b>	North/South <b>NORTH</b>	Feet From <b>1392'</b>	East/West <b>WEST</b>	County <b>SAN JUAN</b>

Bottom Hole Location if Different From Surface									
UL or Lot	Sec.	Twp.	Rge.	Lot Idn.	Feet From	North/South	Feet From	East/West	County

Dedication <b>160</b>	Joint ?	Consolidation	Order No.
--------------------------	---------	---------------	-----------

NO ALLOWABLE WELL ASSIGNED TO THIS COMPLETION UNTIL ALL INTERESTS HAVE BEEN CONSOLIDATED  
OR A NON-STANDARD UNIT HAS BEEN APPROVED BY THE DIVISION



<b>OPERATOR CERTIFICATION</b> I hereby certify that the information contained herein is true and complete to the best of my knowledge and belief. Signature <i>Brian Wood</i>	
Printed Name <b>BRIAN WOOD</b>	
Title <b>CONSULTANT</b>	
Date <b>FEB. 9, 2002</b>	
<b>SURVEYOR CERTIFICATION</b> I hereby certify that the well location on this plat was plotted from field notes of actual surveys made by me or under my supervision, and that the same is true and correct to the best of my belief. Date of Survey	
Signature of Professional Surveyor 	