

UNITED STATES
DEPARTMENT OF THE INTERIOR
BUREAU OF LAND MANAGEMENT

APPLICATION FOR PERMIT TO DRILL OR DEEPEN

1 a TYPE OF WORK

DRILL ☒DEEPEN ☐

b TYPE OF WELL

Oil ☐
Well ☐Gas ☒
Well ☒Other ☐SINGLE ☒
ZONE ☒MULTIPLE ☐
ZONE ☐

2 Name of Operator

Dugan Production Corp.

3 Address and Telephone No

P.O. Box 420, Farmington, NM 87499 (505) 325 - 1821

LOCATION OF WELL (Report location clearly and in accordance with any State requirements *)

At surface 1870' FSL & 1960' FEL

At proposed prod. zone

same

5 LEASE DESIGNATION AND SERIAL NO

"SF-078110

6 IF IN AN ALLOTTED OR TRIBE NAME

7 UNIT AGREEMENT NAME

8 FARM OR LEASE NAME WELL NO

Federal I #10

9 API Well No

30-045- 31033

10 FIELD AND POOL OR WILDCAT

Harper Hill FR Sand PC

11 SEC., T., R., M. OR BLK
AND SURVEY OR AREA

Unit J

Sec. 10, T29N, R14W

12 COUNTY OR PARISH

San Juan

13 STATE

NM

14 DISTANCE IN MILES AND DIRECTION FROM NEAREST TOWN OR POST OFFICE*

1 mile west of Farmington, New Mexico

15 DISTANCE FROM PROPOSED*

LOCATION TO NEAREST
PROPERTY OR LEASE LINE, FT

1870'

16 NO. OF ACRES IN LEASE

2,555.47

17 NO. OF ACRES ASSIGNED
TO THIS WELL

160

SE/4

18 DISTANCE FROM PROPOSED LOCATION*

TO NEAREST WELL, DRILLING, COMPLETED, 1700'
OR APPLIED FOR, ON THIS LEASE, FT

19 PROPOSED DEPTH

1075'

20 ROTARY OR CABLE TOOLS

Rotary

21 ELEVATIONS (Show whether DF, RT, GR, etc.)

G.L. 5401'

22 APPROX. DATE WORK WILL START*

ASAP

PROPOSED CASING AND CEMENTING PROGRAM

23	SIZE OF HOLE	GRADES, SIZES OF CASING	WEIGHT PER FOOT	SETTING DEPTH	QUANTITY OF CEMENT
	8-3/4"	7"	20#	120	70 cu.ft. circ. to surf.
	6-1/4"	4 1/2"	10.5#	1075	165 cu.ft. circ. to surf.

A water based gel-mud will be used to drill surface and production casing hole. Standard 2,000 psi BOP will be used to drill production hole. The Pictured Cliffs Sandstone will be completed from approximately 925' - 935'. The interval will be fractured.

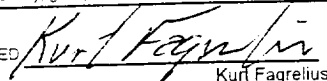
DRILLING OPERATIONS AUTHORIZED ARE
SUBJECT TO COMPLIANCE WITH ATTACHED
"GENERAL REQUIREMENTS"

This action is subject to technical and
procedural review pursuant to 43 CFR 3160.4
and appeal pursuant to 43 CFR 3165.4.

IN ABOVE SPACE DESCRIBE PROPOSED PROGRAM. If proposal is to deepen, give data on present productive zone and proposed new productive zone. If proposal is to drill or deepen directionally, give pertinent data on subsurface locations and measured and true vertical depths. Give blowout preventer program, if any.

24

SIGNED


Kurt Fagrelus

Title Geologist

Date 3/18/2002

(This space for Federal or State office use)

PERMIT NO

APPROVAL DATE

Application approval does not warrant or certify that the applicant has legal or equitable title to those rights in the subject lease which would entitle the applicant to conduct operations thereon.
CONDITIONS OF APPROVAL, IF ANY:

Approved by


David J. Mankiewicz

Date

JUL - 3

*See Instructions on Reverse Side

Title 18 U.S.C. Section 1001 makes it a crime for any person knowingly and willfully to make to any department or agency of the United States any false, fictitious or fraudulent statements or representations as to any matter within its jurisdiction.

NLM/DOF

District I
PO Box 1980, Hobbs, NM 88241-1980

District II
PO Drawer CO, Artesia, NM 88211-0719

District III
1000 Rio Brazos Rd., Aztec, NM 87410

District IV
PO Box 2088, Santa Fe, NM 87504-2088

State of New Mexico
Energy, Minerals & Natural Resources Dept.

OIL CONSERVATION DIVISION
PO Box 2088
Santa Fe, NM 87504-2088

Form O-100
Revised February 21, 1994
Instructions on back
Submit to Appropriate District Office
State Lease - 4 Copies
Fee Lease - 3 Copies

☐ AMENDED REPORT

WELL LOCATION AND ACREAGE DEDICATION PLAT

*API Number 30-045-31033		*Pool Code 78150	*Pool Name HARPER HILL FRUITLAND SAND PICTURED CLIFFS
*Property Code 3682	*Property Name FEDERAL I		*Well Number 10
*OSPRIC No. 006515	*Operator Name DUGAN PRODUCTION CORPORATION		*Elevation 5401'

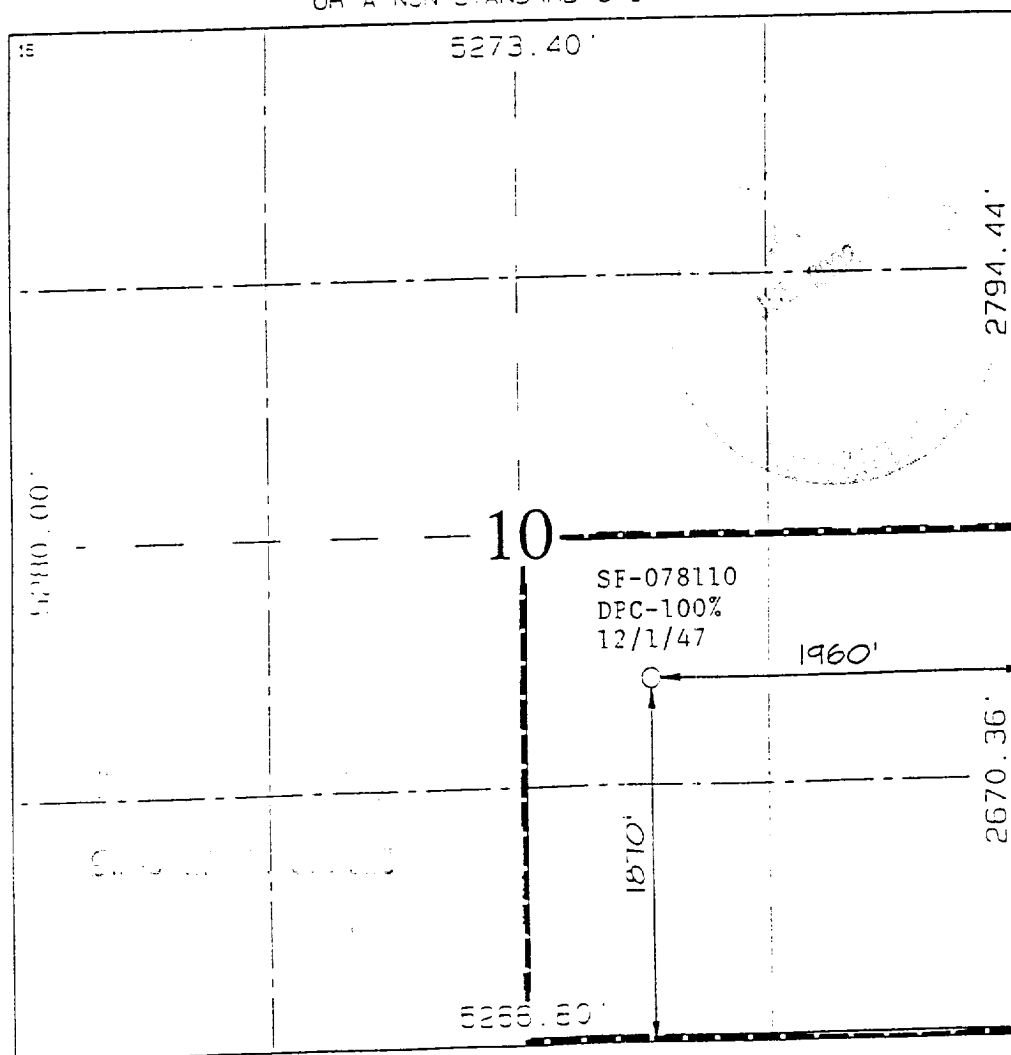
10 Surface Location

UL or lot no.	Section	Township	Range	Lot 10n	Feet from the	North/South line	Feet from the	East/West line	County
J	10	29N	14W		1870	SOUTH	1960	EAST	SAN JUAN

11 Bottom Hole Location If Different From Surface

UL or lot no.	Section	Township	Range	Lot 10n	Feet from the	North/South line	Feet from the	East/West line	County
12 Dedicated Acres 160.0 Acres - (SE/4)					13 Point on Infill		14 Consolidation Code		15 Order No.

NO ALLOWABLE WILL BE ASSIGNED TO THIS COMPLETION UNTIL ALL INTERESTS HAVE BEEN CONSOLIDATED
OR A NON-STANDARD UNIT HAS BEEN APPROVED BY THE DIVISION



17 OPERATOR CERTIFICATION

I hereby certify that the information contained herein is true and complete to the best of my knowledge and belief.

Kurt Fagrelus
Signature

Kurt Fagrelus
Printed Name

Geologist
Title

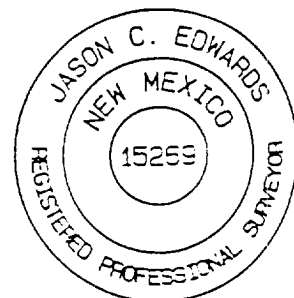
March 18, 2002
Date

18 SURVEYOR CERTIFICATION

I hereby certify that the well location shown on this plat was plotted from field notes of actual surveys made by me or under my supervision, and that the same is true and correct to the best of my belief.

Survey Date: FEBRUARY 18, 2002

Signature and Seal of Professional Surveyor



JASON C. EDWARDS
Certificate Number 15259

DUGAN PRODUCTION CORPORATION FEDERAL #10 EXHIBIT E.

1870' FSL & 1960' FEL, SECTION 10, T29N, N14W, N.M.P.M.
SAN JUAN COUNTY, NEW MEXICO

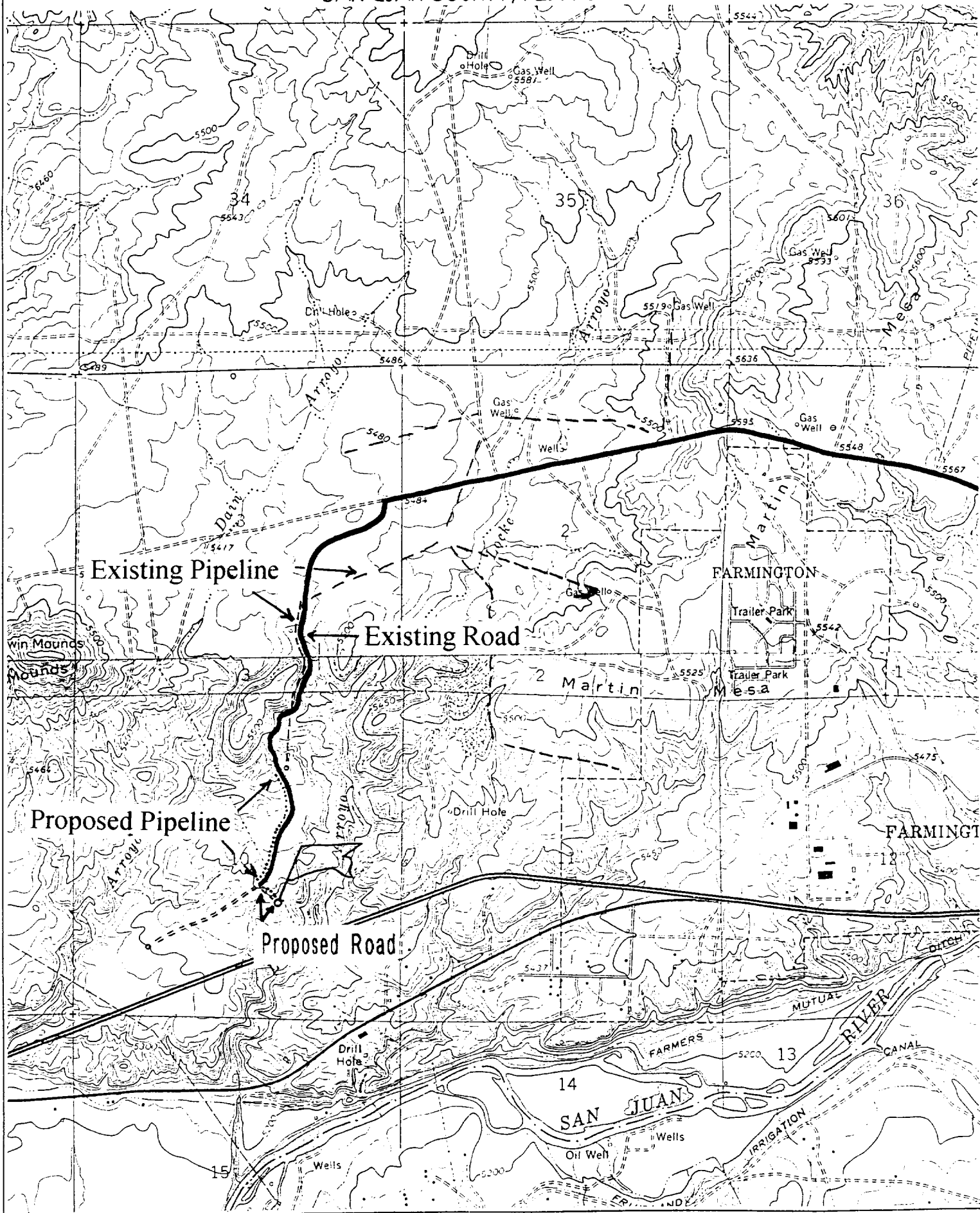


EXHIBIT B
OPERATIONS PLAN
Federal I #10

APPROXIMATE FORMATION TOPS:

Kirtland - surface
Fruitland - 620'
Pictured Cliffs - 925'

Total Depth 1,075'

LOGGING PROGRAM: Run cased hole CNL-CDL Catch samples every 10 feet from 600 feet to total depth.

CASING PROGRAM:

Hole <u>Size</u>	Casing <u>Size</u>	Setting <u>Wt./ft. Depth</u>	Grade and <u>Condition</u>
8-3/4"	7"	20# ± 120'	J-55
6-1/4"	4-1/2"	10.5# ± 1075'	J-55

Plan to drill a 8-3/4" hole and set 120' of 7" OD, 20#, J-55 surface casing; then plan to drill a 6-1/4" hole to total depth with gel-water-mud program to test Fruitland Sand/PC Formation. 4½", 10.5# J-55 casing will be run and cemented. Cased hole CNL-CDL log will be run. Productive zone will be perforated and fractured. After frac the well will be cleaned out and production equipment will be installed.

CEMENTING PROGRAM: All volumes are contingent upon Caliper logs.

Surface: Cement with 70 cu.ft. Class "B" neat. Circulate to surface

Production Stage - Cement with 100 cu.ft. 2% Lodense with 1/4# celloflake/sx followed by 65 cu.ft. Class "B" with 1/4# celloflake/sx.
Total cement slurry for production stage is 165-cu.ft. Circulate to surface.

An adequate spacer will be pumped ahead of the cement slurry to help prevent mud contamination of the cement. An adequate number of casing centralizers will be run through usable water zones to ensure that casing is centralized through these zones. The adequate number of centralizers will be determined based on API standards. Centralizers to impart a swirling action around the casing will be used just below and into the base of the lowest usable water zone. These devices will assist mud displacement, increase cement bonding potential and create an effective hydraulic seal. A chronological log will be kept which records the pump rate, pump pressure, slurry density, and slurry volume for the cement job. The log will be sent to the BLM after completion of the job.

WELLHEAD EQUIPMENT:

Huber 7" x 4-1/2" casing head, 1000#WP, tested to 2000#

Huber 4-1/2" x 2-7/8" tubing head, 1000# WP, tested to 2000#

BOP and Related Equipment will include for a 2000 psi system: (Exhibit D).

Annual preventer, double ram, or 2 rams with one being blind and one being a pipe ram

Kill line (2" minimum)

1 kill line valve (2" minimum)

1 choke line valve

2 chokes

Upper kelly cock valve with handle available

Safety valve and subs to fit all drill string connections in use

Pressure gauge on choke manifold

2" minimum choke line

Fill-up line

Dugan Prod.Corp. Office & Radio Dispatch: 325-1821

Kurt Fagrelus 325-4327

Mark Brown

327-3632

John Alexander 325-6927

John Roe

326-1034