

District I  
PO Box 1980, Hobbs, NM 88241-1980  
District II  
811 S. 1st Street, Artesia, NM 88210-2834  
District III  
1000 Rio Brazos Rd., Aztec, NM 87410  
District IV  
2040 South Pacheco, Santa Fe, NM 87505

State of New Mexico  
Energy, Minerals & Natural Resources Department

OIL CONSERVATION DIVISION  
2040 South Pacheco  
Santa Fe, NM 87505

Form C-101  
Revised October 18, 1999  
Instructions on back  
Submit to Appropriate District Office  
State Lease - 6 Copies  
Fee Lease - 5 Copies

☐ AMENDED REPORT

APPLICATION FOR PERMIT TO DRILL, RE-ENTER, DEEPEN, PLUGBACK, OR ADD A ZONE

<sup>1</sup> Operator name and Address <b>XTO ENERGY INC.</b> <del>Cross Timbers Operating Company</del> 2700 Farmington Ave., Bldg. K. Ste 1 Farmington, NM 87401		<sup>2</sup> OGRID Number 167067
<sup>4</sup> Property Code 22825	<sup>5</sup> Property Name State Gas Com "BR" APR 2002 RECEIVED OIL CON DIV UNIT 3	<sup>3</sup> API Number 30-0 45-31058
		<sup>6</sup> Well No. #1G

<sup>7</sup> Surface Location									
UL or lot no.	Section	Township	Range	Lot. Idn	Feet from the	North/South Line	Feet from the	East/West line	County
C	2	29N	10W		845'	North	2600'	West	San Juan

<sup>8</sup> Proposed Bottom Hole Location If Different From Surface									
UL or lot no.	Section	Township	Range	Lot. Idn	Feet from the	North/South Line	Feet from the	East/West line	County
<sup>9</sup> Proposed Pool 1 Basin Dakota					<sup>10</sup> Proposed Pool 2 Blanco Mesaverde				

<sup>11</sup> Work Type Code N	<sup>12</sup> Well Type Code G	<sup>13</sup> Cable/Rotary R	<sup>14</sup> Lease Type Code State	<sup>15</sup> Ground Level Elevation 5,984' Ground Level
<sup>16</sup> Multiple Yes	<sup>17</sup> Proposed Depth 7,275'	<sup>18</sup> Formation Dakota/Mesaverde	<sup>19</sup> Contractor Bearcat Drilling	<sup>20</sup> Spud Date Summer, 2002

<sup>21</sup> Proposed Casing and Cement Program					
Hole Size	Casing Size	Casing weight/foot	Setting Depth	Sacks of Cement	Estimated TOC
12-1/4"	9-5/8"	32.3 #/ft	260'	+120 sx	Surface —
8-3/4"	7"	20.0 #/ft	2,750'	+340 sx	Surface —
6-1/4"	4-1/2"	10.5 #/ft	7,275'	+350 sx	2,550' —

<sup>22</sup> Describe the proposed program. If this application is to DEEPEN or PLUG BACK give the data on the present productive zone and proposed new productive zone. Describe the blowout prevention program, if any. Use additional sheets if necessary.

Drill to 260'. Cmt 9-5/8" csg w/120 Type III cmt w/2% CC & 1/4#/sx cello (14.5 ppg, 1.39 cuft, 6.8 gal/sx).

Set 7" intermediate @ 2,750'. Cmt w/240 sx Premium Lite (65/35) w/6% gel & 1/4#/sx cello (12.5 ppg, 2.01 cuft, 10.78 gal/sx) followed by 100 sx Type III w/2% CC & 1/4#/sx cello (14.5 ppg, 1.39 cuft, 6.8 gal/sx).

Set 4-1/2" @ 7,275'. Cmt w/200 sx Class H w/2% econolite & 1/4#/sx cello (11.8 ppg, 2.45 cuft, 14.7 gal/sx) followed by 150 sx Class H w/fluidloss, dispersant & 1/4#/sx cello (15.6 ppg, 1.18 cuft, 5.2 gal/sx). Final vol will be obtained fr/caliper log. See attached BOP diagram.

<sup>23</sup> I hereby certify that the information given above is true and complete to the best of my knowledge and belief.

Signature: <i>Jeffrey W. Patton</i> 4/8/02	OIL CONSERVATION DIVISION	
Printed name: Jeffrey W. Patton	Approved by: <i>[Signature]</i>	
Title: Drilling Engineer	Title: DEPUTY OIL & GAS INSPECTOR, INT. AFF.	
	Approval: APR - 9 2002	Expiration Date: APR - 9 2003

DISTRICT I  
1625 N. French Dr., Hobbs, N.M. 88240

DISTRICT II  
811 South First, Artesia, N.M. 88210

DISTRICT III  
1000 Rio Brazos Rd., Aztec, N.M. 87410

DISTRICT IV  
2040 South Pacheco, Santa Fe, NM 87505

State of New Mexico  
Energy, Minerals & Natural Resources Department

Form C-102  
Revised August 15, 2000

Submit to Appropriate District Office  
State Lease - 4 Copies  
Fee Lease - 3 Copies

OIL CONSERVATION DIVISION

2040 South Pacheco  
Santa Fe, NM 87505

☐ AMENDED REPORT

WELL LOCATION AND ACREAGE DEDICATION PLAT

<sup>1</sup> API Number <b>30-045-31058</b>	<sup>2</sup> Pool Code <b>72319</b>	<sup>3</sup> Pool Name <b>BLANCO MESAVERDE</b>
<sup>4</sup> Property Code <b>22825</b>	<sup>5</sup> Property Name <b>STATE GAS COM "BR"</b>	<sup>6</sup> Well Number <b>1G</b>
<sup>7</sup> OGRID No. <b>167067</b>	<sup>8</sup> Operator Name <b>XTO ENERGY INC.</b>	<sup>9</sup> Elevation <b>5984'</b>

<sup>10</sup> Surface Location

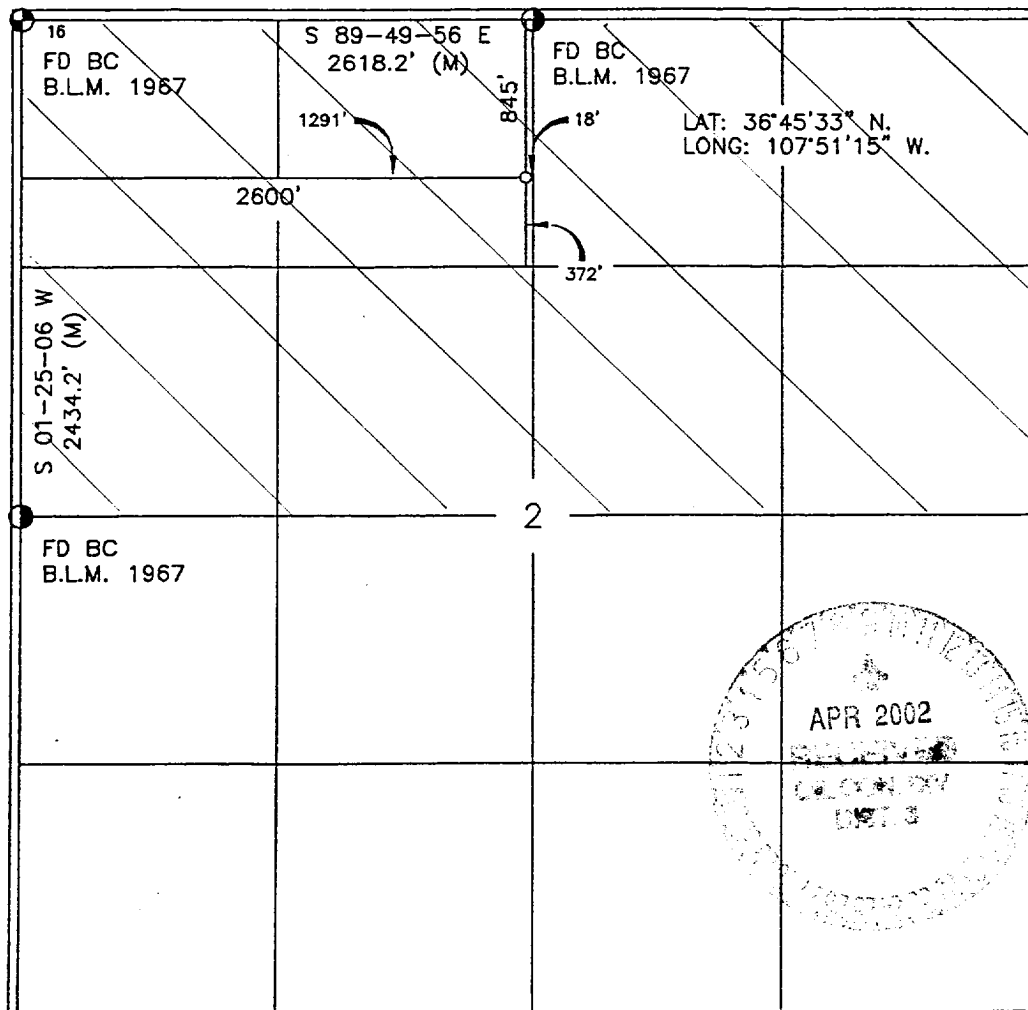
UL or lot no.	Section	Township	Range	Lot Idn	Feet from the	North/South line	Feet from the	East/West line	County
C	2	29-N	10-W		845'	NORTH	2600'	WEST	SAN JUAN

<sup>11</sup> Bottom Hole Location If Different From Surface

UL or lot no.	Section	Township	Range	Lot Idn	Feet from the	North/South line	Feet from the	East/West line	County

<sup>12</sup> Dedicated Acres <b>328.24</b>	<sup>13</sup> Joint or Infill <b>I</b>	<sup>14</sup> Consolidation Code	<sup>15</sup> Order No.
--	---	----------------------------------	-------------------------

NO ALLOWABLE WILL BE ASSIGNED TO THIS COMPLETION UNTIL ALL INTERESTS HAVE BEEN CONSOLIDATED OR A NON-STANDARD UNIT HAS BEEN APPROVED BY THE DIVISION



17 OPERATOR CERTIFICATION

I hereby certify that the information contained herein is true and complete to the best of my knowledge and belief

Signature *Jeffrey W. Patton*  
Printed Name JEFFREY W. PATTON  
Title DRILLING ENGINEER  
Date 4-8-02

18 SURVEYOR CERTIFICATION

I hereby certify that the well location shown on this plat was plotted from field notes of actual surveys made by me or under my supervision, and that the same is true and correct to the best of my belief.

Date of Survey 1-14-02  
Signature and Seal of *Robert A. Rush*  
Professional Surveyor  
Certificate Number 8894

DISTRICT I  
1625 N. French Dr., Hobbs, N.M. 88240

State of New Mexico  
Energy, Minerals & Natural Resources Department

Form C-102  
Revised August 15, 2000

DISTRICT II  
811 South First, Artesia, N.M. 88210

DISTRICT III  
1000 Rio Brazos Rd., Aztec, N.M. 87410

DISTRICT IV  
2040 South Pacheco, Santa Fe, NM 87505

OIL CONSERVATION DIVISION

2040 South Pacheco  
Santa Fe, NM 87505

Submit to Appropriate District Office  
State Lease - 4 Copies  
Fee Lease - 3 Copies

☐ AMENDED REPORT

WELL LOCATION AND ACREAGE DEDICATION PLAT

<sup>1</sup> API Number <b>30-045-31058</b>	<sup>2</sup> Pool Code <b>71599</b>	<sup>3</sup> Pool Name <b>BASIN DAKOTA</b>
<sup>4</sup> Property Code <b>22825</b>	<sup>5</sup> Property Name <b>STATE GAS COM "BR"</b>	<sup>6</sup> Well Number <b>1G</b>
<sup>7</sup> GRID No. <b>167067</b>	<sup>8</sup> Operator Name <b>XTO ENERGY INC.</b>	<sup>9</sup> Elevation <b>5984'</b>

<sup>10</sup> Surface Location

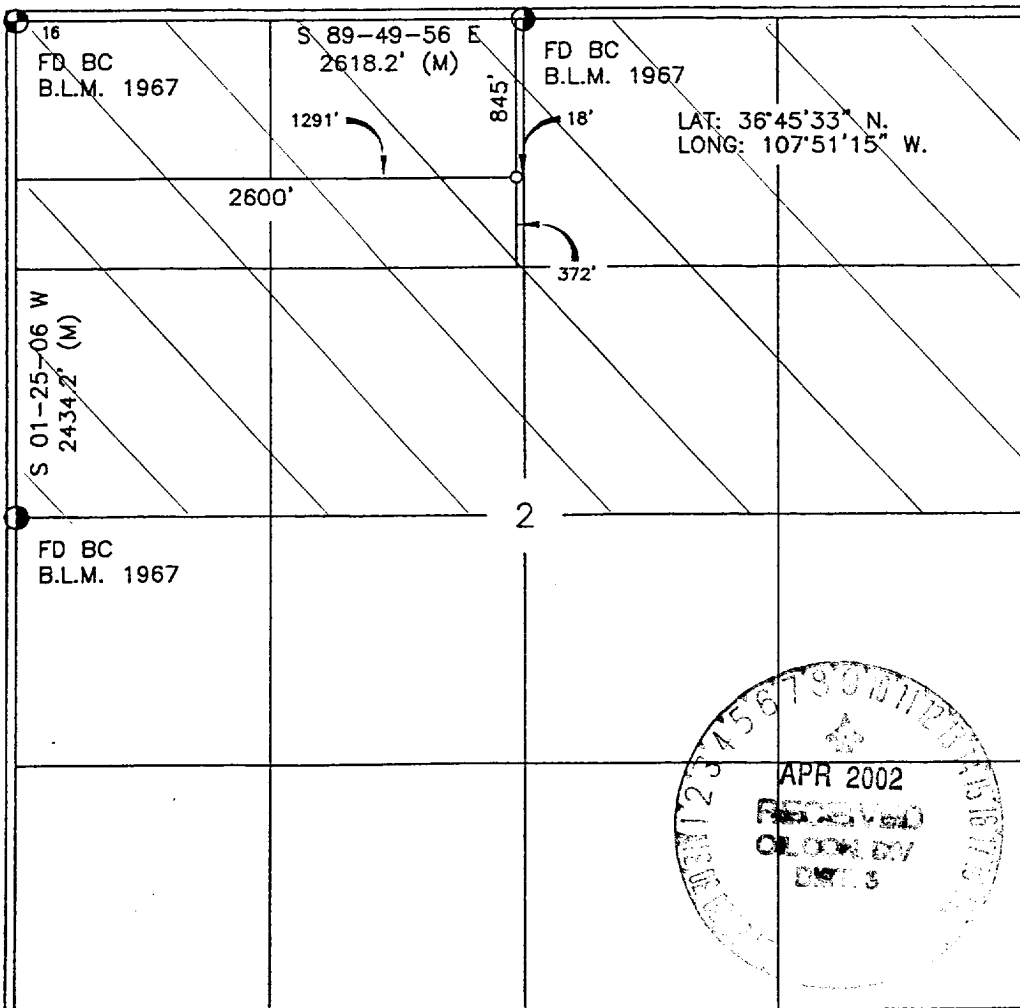
UL or lot no.	Section	Township	Range	Lot Idn	Feet from the	North/South line	Feet from the	East/West line	County
C	2	29-N	10-W		845'	NORTH	2600'	WEST	SAN JUAN

<sup>11</sup> Bottom Hole Location If Different From Surface

UL or lot no.	Section	Township	Range	Lot Idn	Feet from the	North/South line	Feet from the	East/West line	County

<sup>12</sup> Dedicated Acres <b>328.24</b>	<sup>13</sup> Joint or Infill <b>N/Z</b>	<sup>14</sup> Consolidation Code <b>I</b>	<sup>15</sup> Order No.
--	---	--	-------------------------

NO ALLOWABLE WILL BE ASSIGNED TO THIS COMPLETION UNTIL ALL INTERESTS HAVE BEEN CONSOLIDATED OR A NON-STANDARD UNIT HAS BEEN APPROVED BY THE DIVISION



17 OPERATOR CERTIFICATION

I hereby certify that the information contained herein is true and complete to the best of my knowledge and belief

Signature Jeffrey W Patton  
Printed Name **JEFFREY W PATTON**  
Title **DRILLING ENGINEER**  
Date **4-8-02**

18 SURVEYOR CERTIFICATION

I hereby certify that the well location shown on this plat was plotted from field notes of actual surveys made by me or under my supervision, and that the same is true and correct to the best of my belief.

Date of Survey **1-14-02**  
Signature and Seal of Registered Professional Land Surveyor **ROY A RUSH**  
Certificate Number **8894**

# BOP SCHEMATIC FOR DRILLING OPERATIONS CLASS 1 (2M) NORMAL PRESSURE

## TESTING PROCEDURE

1. Test BOP after installation:

Pressure test BOP to 200-300  
psig (low pressure) for 5 min.

Test BOP to Working Press or  
to 70% internal yield of surf csg  
(10 min).

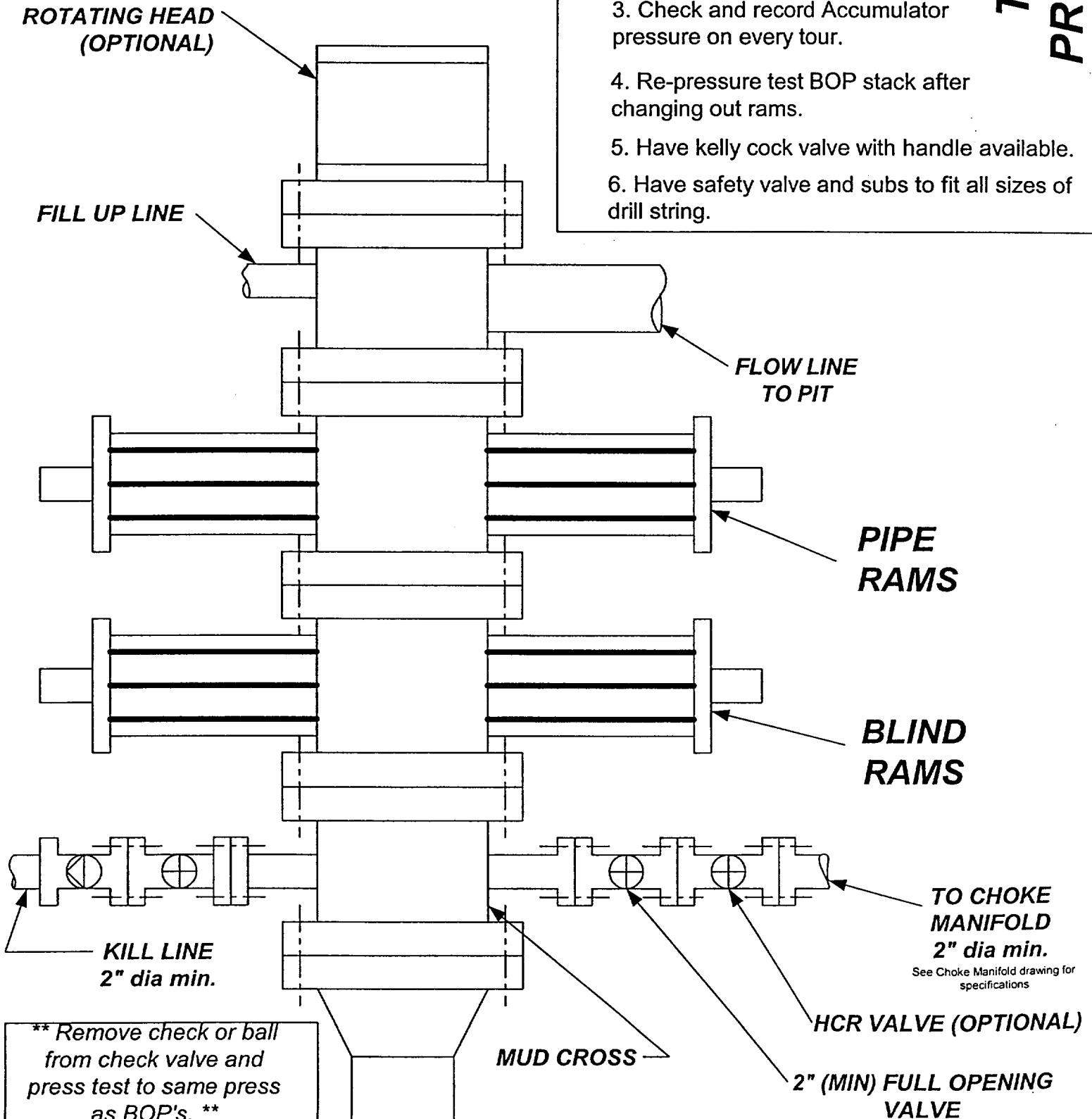
2. Test operation of (both) rams  
on every trip.

3. Check and record Accumulator  
pressure on every tour.

4. Re-pressure test BOP stack after  
changing out rams.

5. Have kelly cock valve with handle available.

6. Have safety valve and subs to fit all sizes of  
drill string.



XTO ENERGY INC.

STATE GAS COM "BR" 1 . 1G

NW/4 SEC. 2, T-29-N, R-10-W, N.M.P.M.,

SAN JUAN COUNTY, NEW MEXICO

845' FNL 2600' FWL

