

District I
PO Box 1980, Hobbs, NM 88241-1980
District II
811 S. 1st Street, Artesia, NM 88210-2834
District III
1000 Rio Brazos Rd., Aztec, NM 87410
District IV
2040 South Pacheco, Santa Fe, NM 87505

State of New Mexico
Energy, Minerals & Natural Resources Department

OIL CONSERVATION DIVISION
2040 South Pacheco
Santa Fe, NM 87505

Form C-101
Revised October 18, 1999
Instructions on back
Submit to Appropriate District Office
State Lease - 6 Copies
Fee Lease - 5 Copies

☐ AMENDED REPORT

APPLICATION FOR PERMIT TO DRILL, RE-ENTER, DEEPEN, PLUGBACK, OR ADD A ZONE

¹ Operator name and Address XTO Energy Inc. 2700 Farmington Ave., Bldg. K. Ste 1 Farmington, NM 87401		² OGRID Number 167067
⁴ Property Code 22625	⁵ Property Name McDaniel Gas Com "A"	³ API Number 30-0 45-31064
		⁶ Well No. #1R

⁷ Surface Location

UL or lot no.	Section	Township	Range	Lot. Idn	Feet from the	North/South Line	Feet from the	East/West line	County
A	26	29N	10W		660'	North	855'	East	San Juan

⁸ Proposed Bottom Hole Location If Different From Surface

UL or lot no.	Section	Township	Range	Lot. Idn	Feet from the	North/South Line	Feet from the	East/West line	County

⁹ Proposed Pool 1

Aztec Pictured Cliffs

¹⁰ Proposed Pool 2

¹¹ Work Type Code N	¹² Well Type Code G	¹³ Cable/Rotary Rotary	¹⁴ Lease Type Code Fee	¹⁵ Ground Level Elevation 5,524' Ground Level
¹⁶ Multiple N	¹⁷ Proposed Depth 2,100'	¹⁸ Formation Pictured Cliffs	¹⁹ Contractor Not yet awarded	²⁰ Spud Date Summer, 2002

²¹ Proposed Casing and Cement Program

Hole Size	Casing Size	Casing weight/foot	Setting Depth	Sacks of Cement	Estimated TOC
8-3/4"	7"	20.0#, J-55, STC	200'	75 sx	Surface
6-1/4"	4-1/2"	10.5#, J-55, STC	2,100'	150 sx	Surface

²² Describe the proposed program. If this application is to DEEPEN or PLUG BACK give the data on the present productive zone and proposed new productive zone. Describe the blowout prevention program, if any. Use additional sheets if necessary.

Surface: 75 sx of Type III cement w/2% CC & 1/4#/sx cello (14.8 ppg, 1.39 cuft). Circ to surface.

Production: 150 sx Type III Premium Lite FM (65%/35%/6%) with 1/4#/sx cello & 2% CC (12.5 ppg & 2.01 cuft/sx). Circ to surface.

Remarks: Use 25% excess over volume calculated from op hole logs to determine final cement volume.

BOP diagram is attached.

²³ I hereby certify that the information given above is true and complete to the best of my knowledge and belief.		OIL CONSERVATION DIVISION	
Signature: <i>Jeffrey W. Patton</i> 4-12-02		Approved by: <i>[Signature]</i>	
Printed name: Jeffrey W. Patton		Title: DEPUTY OIL & GAS INSPECTOR, DIST. IV	
Title: Drilling Engineer		Approval Date: APR 15 2002	Expiration Date: APR 15 2003

DISTRICT I
P.O. Box 1980, Hobbs, N.M. 88241-1980

DISTRICT II
P.O. Drawer DD, Artesia, N.M. 88211-0719

DISTRICT III
1000 Rio Brazos Rd., Aztec, N.M. 87410

DISTRICT IV
PO Box 2088, Santa Fe, NM 87504-2088

State of New Mexico
Energy, Minerals & Natural Resources Department

Form C-102
Revised February 21, 1994
Instructions on back
Submit to Appropriate District Office
State Lease - 4 Copies
Fee Lease - 3 Copies

OIL CONSERVATION DIVISION

P.O. Box 2088
Santa Fe, NM 87504-2088

☐ AMENDED REPORT

WELL LOCATION AND ACREAGE DEDICATION PLAT

¹ API Number 30-045-31064		² Pool Code 71280	³ Pool Name AZTEC PICTURED CLIFFS
⁴ Property Code 25625	⁵ Property Name MC DANIEL GAS COM A		⁶ Well Number 1R
⁷ GRID No. 167067	⁸ Operator Name XTO ENERGY INC		⁹ Elevation 5524'

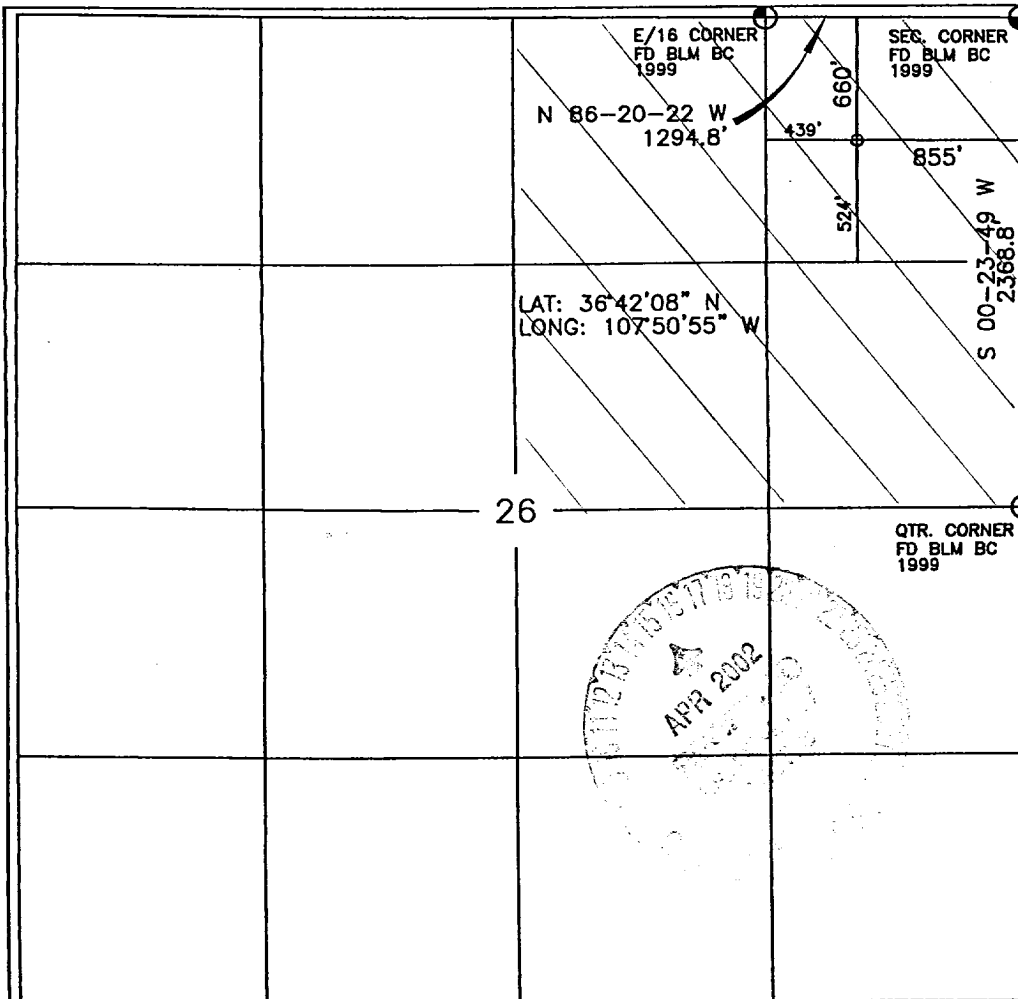
¹⁰ Surface Location

UL or lot no.	Section	Township	Range	Lot Idn	Feet from the	North/South line	Feet from the	East/West line	County
A	26	29-N	10-W		660	NORTH	855	EAST	SAN JUAN

¹¹ Bottom Hole Location If Different From Surface

UL or lot no.	Section	Township	Range	Lot Idn	Feet from the	North/South line	Feet from the	East/West line	County
¹² Dedicated Acres 160 NE/4		¹³ Joint or Infill		¹⁴ Consolidation Code		¹⁵ Order No.			

NO ALLOWABLE WILL BE ASSIGNED TO THIS COMPLETION UNTIL ALL INTERESTS HAVE BEEN CONSOLIDATED
OR A NON-STANDARD UNIT HAS BEEN APPROVED BY THE DIVISION



17 OPERATOR CERTIFICATION

I hereby certify that the information contained herein is true and complete to the best of my knowledge and belief

Signature Jeffrey W Patton
Printed Name JEFFREY W PATTON
Title DRILLING ENGINEER
Date 4-12-02

18 SURVEYOR CERTIFICATION

I hereby certify that the well location shown on this plat was plotted from field notes of actual surveys made by me or under my supervision and that the same is true and correct to the best of my belief.

Date of Survey 4-12-02
Signature and Seal of Professional Surveyor [Signature]
Certificate Number 8894



BOP SCHEMATIC FOR DRILLING OPERATIONS CLASS 1 (2M) NORMAL PRESSURE

TESTING PROCEDURE

1. Test BOP after installation:

Pressure test BOP to 200-300
psig (low pressure) for 5 min.

Test BOP to Working Press or
to 70% internal yield of surf csg
(10 min).

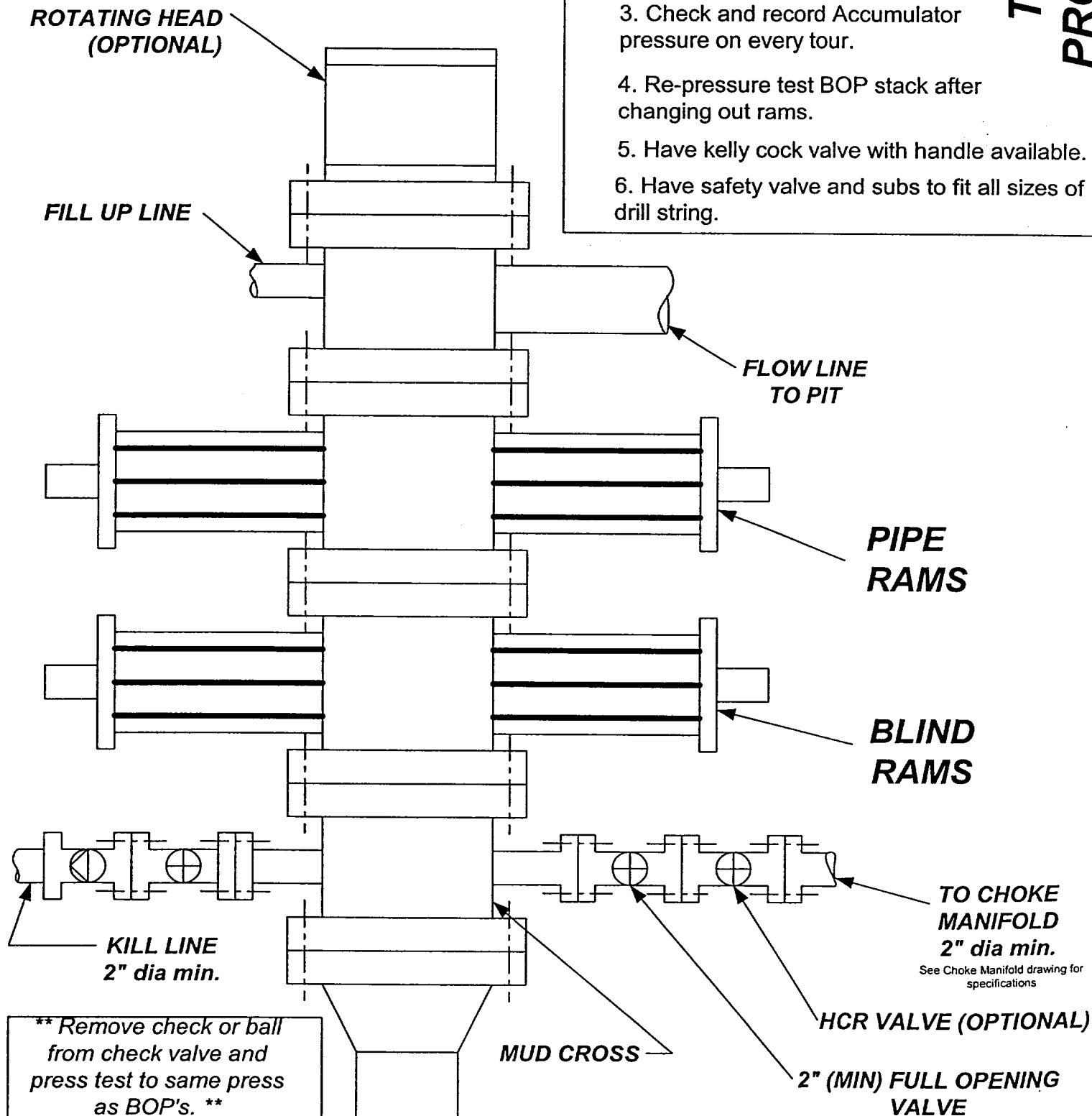
2. Test operation of (both) rams on every trip.

3. Check and record Accumulator pressure on every tour.

4. Re-pressure test BOP stack after changing out rams.

5. Have kelly cock valve with handle available.

6. Have safety valve and subs to fit all sizes of drill string.



X TO ENERGY INC.
MCDANIEL GAS COM A" #1R

NE/4 SEC. 26, T-29-N, R-10-W, N.M.P.M.,
SAN JUAN COUNTY, NEW MEXICO
660' FNL 855' FEL

4070300-N

42' 30"

