

UNITED STATES
DEPARTMENT OF THE INTERIOR
BUREAU OF LAND MANAGEMENT

APPLICATION FOR PERMIT TO DRILL, DEEPEN, OR PLUG BACK

| | |
|---|---|
| 1a. Type of Work DRILL | 5. Lease Number USA SF-078197 Unit Reporting Number |
| 1b. Type of Well GAS | 6. If Indian, All. or Tribe |
| 2. Operator BURLINGTON RESOURCES Oil & Gas Company | 7. Unit Agreement Name 30483 |
| 3. Address & Phone No. of Operator PO Box 4289, Farmington, NM 87499 (505) 326-9700 | 8. Farm or Lease Name Nye Com 9. Well Number 294 |
| 4. Location of Well 1550' FSL, 930' FWL Latitude 36° 44.3'N, Longitude 107° 54.8'W | 10. Field, Pool, Wildcat Basin Fruitland Coal 11. Sec., Twn, Rge, Mer. (NMPM) L Sec. 8, T-29-N, R-10-W API # 30-045-31112 |
| 14. Distance in Miles from Nearest Town Blanco 6 Miles | 12. County San Juan 13. State NM |
| 15. Distance from Proposed Location to Nearest Property or Lease Line 930' | |
| 16. Acres in Lease | 17. Acres Assigned to Well 312.94 W/2 |
| 18. Distance from Proposed Location to Nearest Well, Drlg, Compl, or Applied for on this Lease 75' | |
| 19. Proposed Depth 2073 <small>This action is subject to technical and procedural review pursuant to 43 CFR 3165.3 and appeal pursuant to 43 CFR 3165.4</small> | 20. Rotary or Cable Tools Rotary |
| 21. Elevations (DF, FT, GR, Etc.) 5680 GR | 22. Approx. Date Work will Start DRILLING OPERATIONS AUTHORIZED ARE SUBJECT TO COMPLIANCE WITH ATTACHED "GENERAL REQUIREMENTS". |
| 23. Proposed Casing and Cementing Program See Operations Plan attached | |
| 24. Authorized by: <u>Penny Case</u> Regulatory/Compliance Supervisor | Date <u>4-2-02</u> |

PERMIT NO. _____

APPROVAL DATE _____

APPROVED BY /s/ David J. Mankiewicz TITLE _____

DATE JUL 23 2002

Archaeological Report to be submitted

Threatened and Endangered Species Report to be submitted

NOTE: This format is issued in lieu of U.S. BLM Form 3160-3

Title 18 U.S.C. Section 1001, makes it a crime for any person knowingly and willfully to make to any department or agency of the United States any false, fictitious or fraudulent statements or presentations as to any matter within its jurisdiction.

NRMOCD

District I
PO Box 1980, Hobbs, NM 88241-1980

District II
PO Drawer 00, Artesia, NM 88211-0719

District III
1000 Rio Brazos Rd., Aztec, NM 87410

District IV
PO Box 2088, Santa Fe, NM 87504-2088

State of New Mexico
Energy, Minerals & Natural Resources Department

OIL CONSERVATION DIVISION
PO Box 2088
Santa Fe, NM 87504-2088

Form C-102
Revised February 21, 1994
Instructions on back
Submit to Appropriate District Office
State Lease - 4 Copies
Fee Lease - 3 Copies

☐ AMENDED REPORT

WELL LOCATION AND ACREAGE DEDICATION PLAT

| | | | |
|-------------------------------------|---|---------------------|------------------------------------|
| *API Number 30-045- 31112 | | *Pool Code 71629 | *Pool Name Basin Fruitland Coal |
| *Property Code 30483 | *Property Name NYE COM | | *Well Number 294 |
| *OGRID No. 14538 | *Operator Name BURLINGTON RESOURCES OIL & GAS COMPANY LP | | *Elevation 5680' |

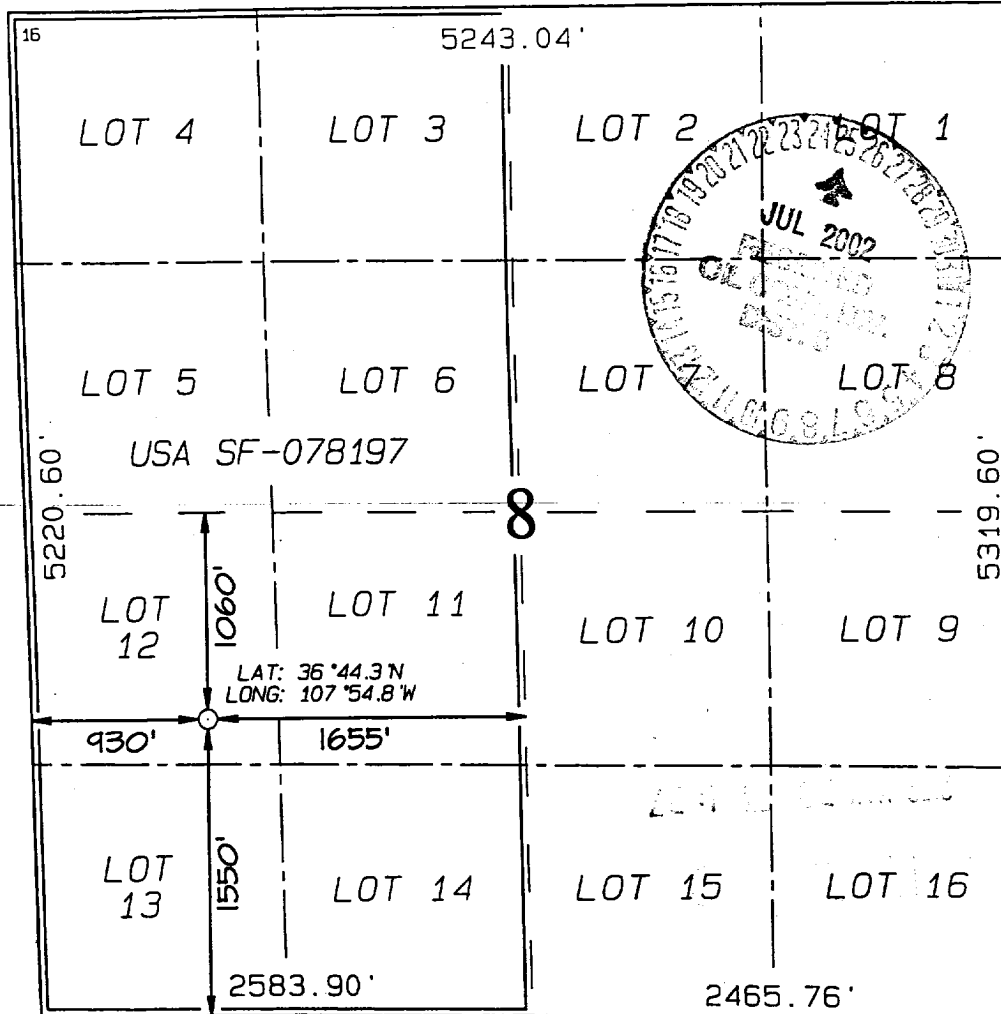
¹⁰ Surface Location

| UL or lot no. | Section | Township | Range | Lot Idn | Feet from the | North/South line | Feet from the | East/West line | County |
|---------------|---------|----------|-------|---------|---------------|------------------|---------------|----------------|----------|
| L | 8 | 29N | 10W | | 1550 | SOUTH | 930 | WEST | SAN JUAN |

¹¹ Bottom Hole Location If Different From Surface

| UL or lot no. | Section | Township | Range | Lot Idn | Feet from the | North/South line | Feet from the | East/West line | County |
|--|---------|----------|-------|---------|-------------------------------|----------------------------------|-------------------------|----------------|--------|
| | | | | | | | | | |
| ¹² Dedicated Acres FC-W/312.94 | | | | | ¹³ Joint or Infill | ¹⁴ Consolidation Code | ¹⁵ Order No. | | |

NO ALLOWABLE WILL BE ASSIGNED TO THIS COMPLETION UNTIL ALL INTERESTS HAVE BEEN CONSOLIDATED
OR A NON-STANDARD UNIT HAS BEEN APPROVED BY THE DIVISION



¹⁷ OPERATOR CERTIFICATION

I hereby certify that the information
contained herein is true and complete
to the best of my knowledge and belief

Peggy Cole
Signature

Peggy Cole
Printed Name

Regulatory Supervisor
Title

4-2-02

Date

¹⁸ SURVEYOR CERTIFICATION

I hereby certify that the well location
shown on this plat was plotted from field
notes of actual surveys made by me or under
my supervision, and that the same is true
and correct to the best of my belief.

Survey Date: JANUARY 19, 2002

Signature and Seal of Professional Surveyor



JASON C. EDWARDS
Certificate Number 15269

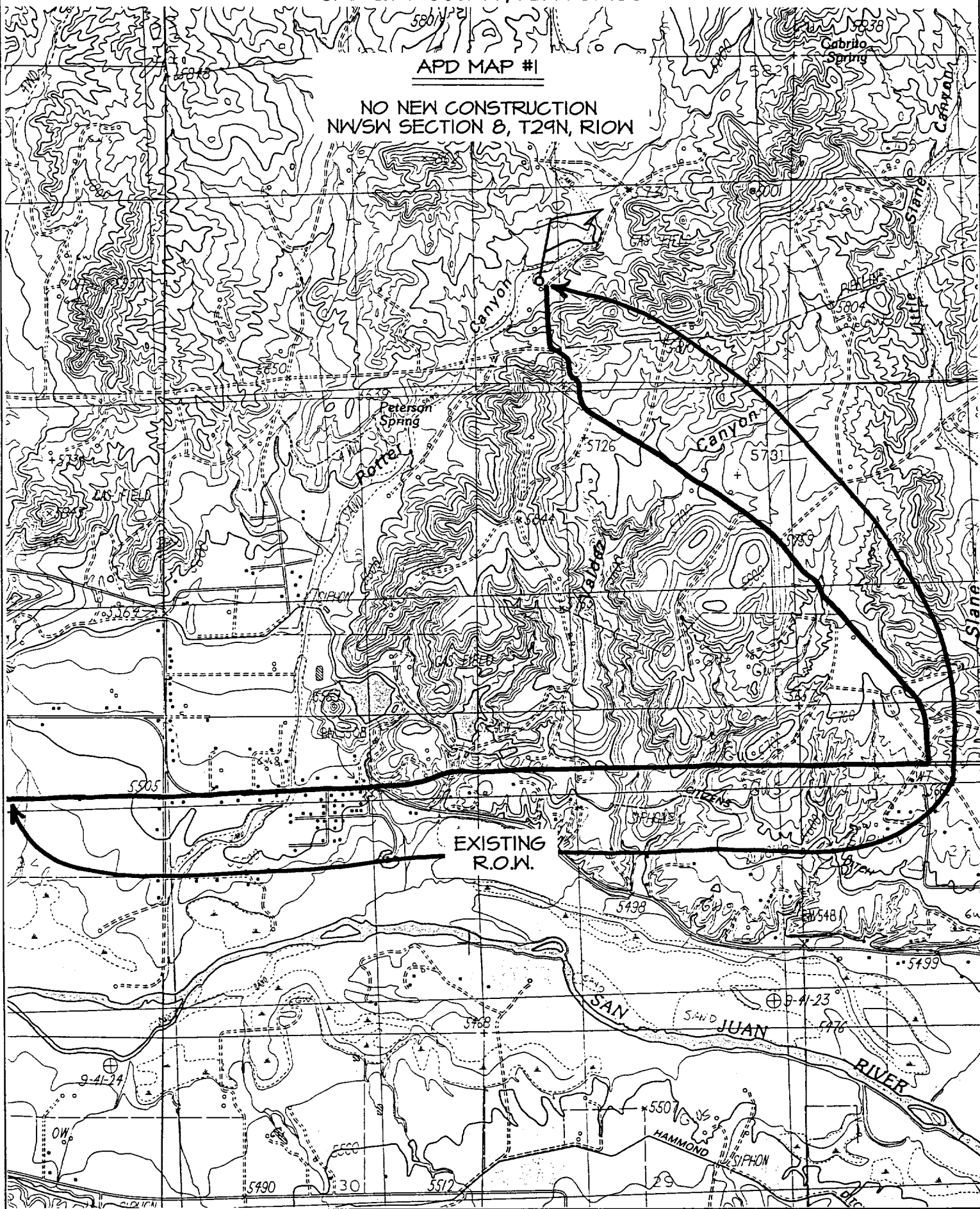
BURLINGTON RESOURCES OIL & GAS COMPANY NYE COM #294

1550' FSL & 930' FWL, SECTION 8, T29N, R10W, N.M.P.M.

SAN JUAN COUNTY, NEW MEXICO

APD MAP #1

NO NEW CONSTRUCTION
NW/SW SECTION 8, T29N, R10W



OPERATIONS PLAN

Well Name: Nye Com 294
Location: 1550' FSL, 930' FWL Section 8, T-29-N, R-10-W
San Juan County, NM
Formation: Basin Fruitland Coal
Elevation: 5680' GR

| Formation: | Top | Bottom | Contents |
|-----------------|----------|--------|----------|
| Surface | San Jose | 825' | |
| Ojo Alamo | 825' | 959' | aquifer |
| Kirtland | 959' | 1661' | gas |
| Fruitland | 1661' | 2023' | gas |
| B/Basal Coal | 2023 | 2025 | gas |
| Pictured Cliffs | 2025' | | gas |
| Total Depth | 2073' | | |

Logging Program:

Cased hole: GR/Neu TD-Surf

Mudlog: 2 Man Unit from Kirtland to TD

Coring Program: none

Mud Program:

| Interval | Type | Weight | Vis. | Fluid Loss |
|-----------|---------------|---------|-------|------------|
| 0- 120' | Spud | 8.4-9.0 | 40-50 | no control |
| 120-2073' | Non-dispersed | 8.4-9.5 | 30-60 | no control |

Casing Program (as listed, the equivalent, or better):

| Hole Size | Depth Interval | Csg. Size | Wt. | Grade |
|-----------|----------------|-----------|-------|-------|
| 9 7/8" | 0' - 120' | 7" | 20.0# | J-55 |
| 6 1/4" | 0' - 2073' | 4 1/2" | 10.5# | K-55 |

Tubing Program:

| | | | |
|------------|--------|------|------|
| 0' - 2073' | 2 3/8" | 4.7# | J-55 |
|------------|--------|------|------|

Float Equipment: 7" surface casing - saw tooth guide shoe. Centralizers will be run in accordance with Onshore Order #2.

4 1/2" production casing - guide shoe and self-fill float collar. Three centralizers run every other joint above shoe. Seven centralizers run every 3rd joint to the base of the Ojo Alamo @ 959'. Two turbolizing type centralizers - one below and one into the base of the Ojo Alamo @ 959'. Standard centralizers thereafter every fourth joint up to the base of the surface pipe.

Wellhead Equipment: 7" x 4 1/2" x 2 3/8" x 11" 2000 psi screw on independent wellhead.

Cementing:

7" surface casing - cement with 27 sx Class AB Portland Type I, II, (32 cu.ft. of slurry, bring cement to surface through 3/4" line). ~~WOC 8 hrs.~~
Test casing to 600 psi for 30 minutes.

28 hrs min

4 1/2" production casing - Lead w/141 sx Premium Lite cement w/3% calcium chloride, 1/4 pps flocele, 5 pps LCM-1, 0.4% FL-52, and 0.4% SMS. Tail w/90 sx Type III cement w/1% calcium chloride, 1/4 pps flocele, and 0.2% FL-52 (425 cu.ft. of slurry, 100% excess to circulate to surface.)

Note: If open hole logs are run, cement volumes will be based on 25% excess over caliper volumes.

Backside
Cement?

BOP and tests:

Surface to TD - 11" 2000 psi (minimum double gate BOP stack (Reference Figure #1). Prior to drilling out surface casing, test rams to 600 psi/30 min.

Completion - 7 1/16" 2000 psi (minimum) double gate BOP stack (Reference Figure #2). Prior to completion operations, test rams and casing to 2000 psi/15 min.

From surface to TD - choke manifold (Reference Figure #3).

Pipe rams will be actuated to least once each day and blind rams actuated once each trip to test proper functioning. An upper kelly cock valve with handle and drill string safety valves to fit each drill string will be maintained and available on the rig floor.

BOP and tests (If a coiled tubing drilling (CTD) rig is utilized.):

Surface to TD: 7-1/16" 2000 psi (minimum) Torus annular BOP stack (Reference Figure #1b). Prior to drilling out surface casing, test annular BOP to 600psi/30 min.

Completion: 7-1/16" 2000 psi (minimum) double gate BOP stack (Reference Figure #2). Prior to completion operations, test blind rams and casing to 1500 psi for 30 minutes; all pipe rams and casing to 1500 psi for 30 minutes each. **Same as in original APD operations plan.**

From surface to TD: choke manifold (Reference Figure #3). **Same as in original APD operations plan.**

The annular BOP will be actuated to close on drill pipe (coiled tubing) at least once each day and to close on open hole once each trip to test proper functioning.

Additional information:

- * Anticipated pore pressure for the Fruitland is 500 psi.
- * This gas is dedicated.
- * The west half of Section 8 is dedicated to the Fruitland Coal.

Erin J. Giles
Drilling Engineer

4/18/02
Date