

Submit to Appropriate
District Office
State Lease - 6 copies
Fee Lease - 5 copies

State of New Mexico
Energy, Minerals and Natural Resources Department

Form C-101
Revised 1-1-89

OIL CONSERVATION DIVISION
P.O. Box 2088
Santa Fe, New Mexico 87504-2088

DISTRICT I
P.O. Box 1980, Hobbs, NM 88240

DISTRICT II
P.O. Drawer DD, Artesia, NM 88210

DISTRICT III
1000 Rio Brazos Rd., Aztec, NM 87410

API NO. (assigned by OCD on New Wells)

5. Indicate Type of Lease
STATE ☐ FEE ☐

6. State Oil & Gas Lease No.

APPLICATION FOR PERMIT TO DRILL, DEEPEN, OR PLUG BACK

1a. Type of Work:

DRILL ☒

RE-ENTER ☐

DEEPEN ☐

PLUG BACK ☐

b. Type of Well:

OIL
WELL ☐

GAS
WELL ☐

OTHER Service Well

SINGLE
ZONE ☐

MULTIPLE
ZONE ☐

7. Lease Name or Unit Agreement Name

Big A

2. Name of Operator

George Coleman

8. Well No.

1

3. Address of Operator

P.O. Drawer 3337 Farmington, NM 87499

9. Pool name or Wildcat

4. Well Location
Unit Letter

see attached plat
N 1736

Feet From The

WEST

Line and

817

Feet From The

SOUTH

Line

Section 11

Township 29N

Range 13W

NMPM

San Juan

County

10. Proposed Depth

200'

11. Formation

12. Rotary or C.T.

Rotary

13. Elevations (Show whether DF, RT, GR, etc.)

5321.66

14. Kind & Status Plug Bond

15. Drilling Contractor

Big A Well Service

16. Approx. Date Work will start

5-20-91

17. PROPOSED CASING AND CEMENT PROGRAM

SIZE OF HOLE	SIZE OF CASING	WEIGHT PER FOOT	SETTING DEPTH	SACKS OF CEMENT	EST. TOP
8-3/4"	7"	20#	35'	redimix	surface
6-1/4"	4-1/2"	10.5#	200'	36 sks/42 cu ft	circulate to
				c1 Bw/3% CaCl ₂	surface

& 1/4# Gel-flake/sk

* This is a conductor pipe that will be cemented down the annulus with redimix.

This well will be used to check rig operations. It will not be perforated or used for production of water or hydrocarbons.

RECEIVED
MAY 16 1991
OIL CON. DIV.
DIST. 3

IN ABOVE SPACE DESCRIBE PROPOSED PROGRAM: IF PROPOSAL IS TO DEEPEN OR PLUG BACK, GIVE DATA ON PRESENT PRODUCTIVE ZONE AND PROPOSED NEW PRODUCTIVE ZONE. GIVE BLOWOUT PREVENTER PROGRAM, IF ANY.

I hereby certify that the information above is true and complete to the best of my knowledge and belief.

SIGNATURE

L.O. Van Ryan

TITLE

Agent

DATE

5/16/91

TELEPHONE NO.

(This space for State Use)

APPROVED BY

Emil Brack

TITLE

DEPUTY OIL & GAS INSPECTOR, DIST. #3

DATE

5-20-91
MAY 20 1991

CONDITIONS OF APPROVAL, IF ANY:

Submit to Appropriate
District Office
State Lease - 4 copies
Fee Lease - 3 copies

State of New Mexico
Energy, Minerals and Natural Resources Department

Form C-102
Revised 1-1-89

OIL CONSERVATION DIVISION

DISTRICT I
P.O. Box 1980, Hobbs, NM 88240

P.O. Box 2088
Santa Fe, New Mexico 87504-2088

DISTRICT II
P.O. Drawer DD, Artesia, NM 88210

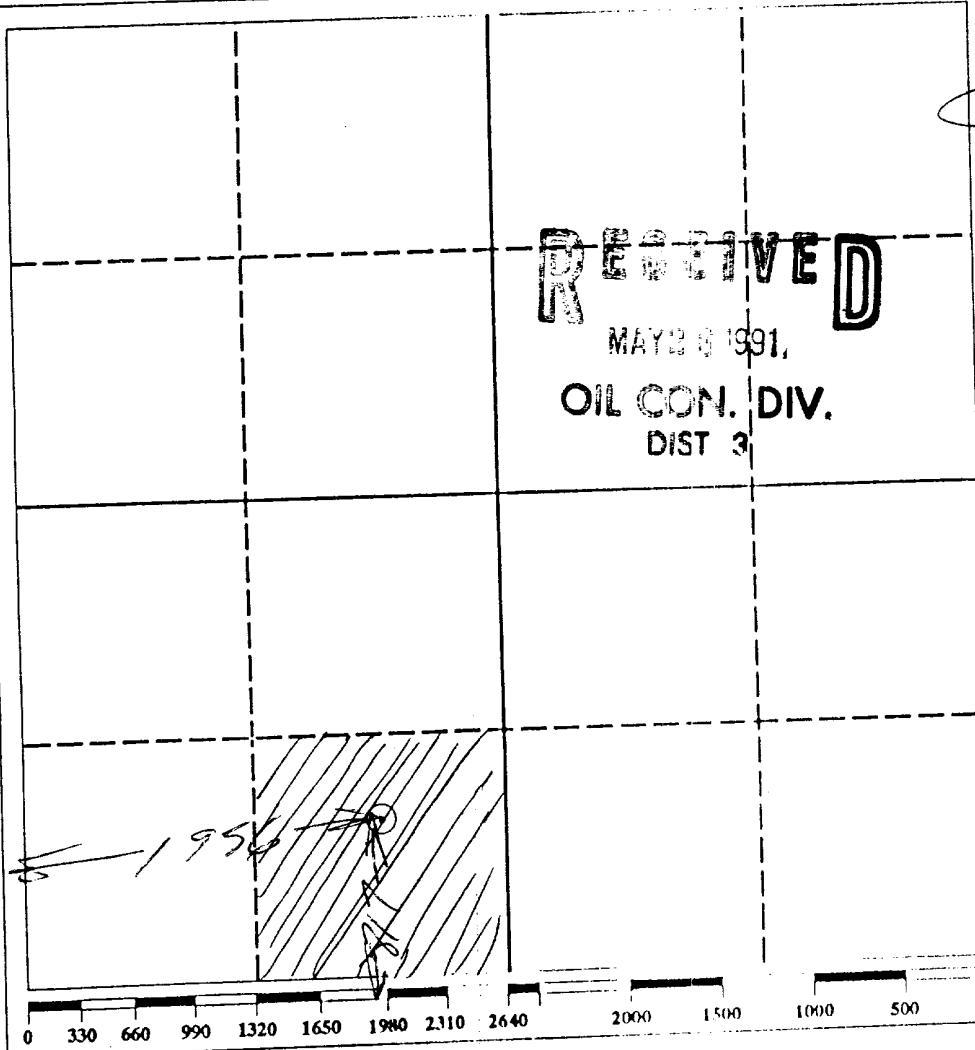
DISTRICT III
1000 Rte. Prazos Rd., Aztec, NM 87410

WELL LOCATION AND ACREAGE DEDICATION PLAT

All Distances must be from the outer boundaries of the section

Operator George Coleman		Lease Big A		Well No. 1
Unit Letter N	Section 11	Township T29N	Range R13W	County San Juan
Actual Footage Location of Well: feet from the 1950 West line and 817 feet from the South line				
Ground level Elev. 5321[±]	Producing Formation NA	Pool NA	Dedicated Acreage: NA Acres	

1. Outline the acreage dedicated to the subject well by colored pencil or hatchure marks on the plat below.
2. If more than one lease is dedicated to the well, outline each and identify the ownership thereof (both as to working interest and royalty).
3. If more than one lease of different ownership is dedicated to the well, have the interest of all owners been consolidated by communitization, unitization, force-pooling, etc.?
☐ Yes ☐ No If answer is "yes" type of consolidation
If answer is "no" list the owners and tract descriptions which have actually been consolidated. (Use reverse side of this form if necessary.)
No allowable will be assigned to the well until all interests have been consolidated (by communitization, unitization, forced-pooling, or otherwise) or until a non-standard unit, eliminating such interest, has been approved by the Division.



OPERATOR CERTIFICATION

I hereby certify that the information contained herein is true and complete to the best of my knowledge and belief.

Signature

L.O. VAN RYAN

Printed Name

Agent

Position

Company

5-20-91

Date

SURVEYOR CERTIFICATION

I hereby certify that the well location shown on this plat was plotted from field notes of actual surveys made by me or under my supervision, and that the same is true and correct to the best of my knowledge and belief.

Date Surveyed

5-8-91

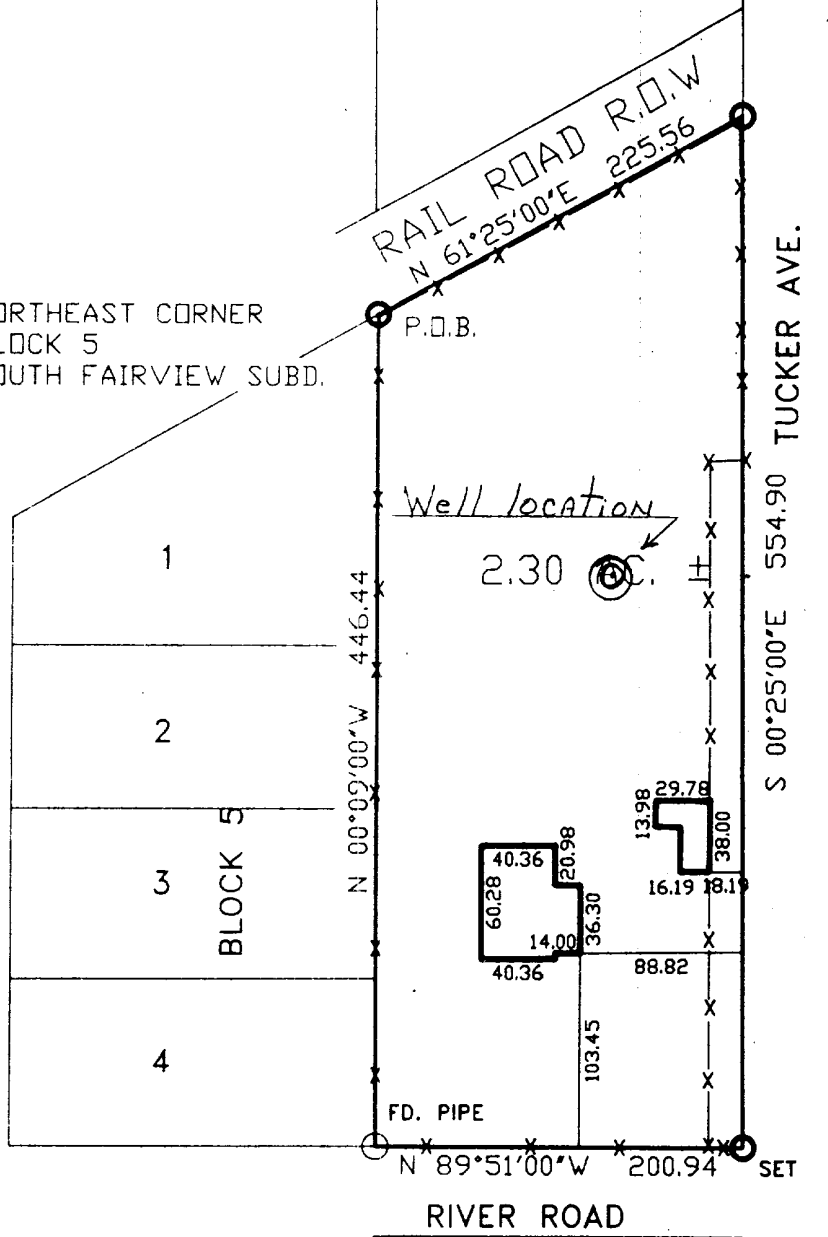
Signature of Professional Surveyor

David M. Hootley

Certificate No.

10474

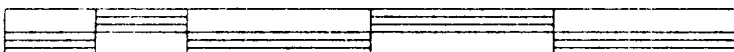
NORTHEAST CORNER
BLOCK 5
SOUTH FAIRVIEW SUBD.



RECEIVED
MAY 15 1991
OIL CON. DIV
DIST. 2



100 50 0 100 200 300



SCALE IN FEET

 **BREWER
ASSOCIATES, INC.**
909 W. APACHE, FARMINGTON, N.M.