

UNITED STATES
DEPARTMENT OF THE INTERIOR
BUREAU OF LAND MANAGEMENT

SUBMIT IN TRIPLICATE*
(Other instructions on re-
verse side)

Form approved.
Budget Bureau No. 1004-0135
Expires August 31, 1985

SUNDRY NOTICES AND REPORTS ON WELLS

(Do not use this form for proposals to drill or to deepen or plug back to a different reservoir.
Use "APPLICATION FOR PERMIT—" for such proposals.)

5. LEASE DESIGNATION AND SERIAL NO.

SF 078770

6. IF INDIAN, ALLOTTEE OR TRIBE NAME

7. UNIT AGREEMENT NAME

Rosa Unit

8. FARM OR LEASE NAME

Rosa Unit

9. WELL NO.

#6

10. FIELD AND POOL, OR WILDCAT

Blanco Mesa Verde

11. SEC., T., R., M., OR BLK. AND
SURVEY OR AREA

Sec. 27, T31N, R5W

12. COUNTY OR PARISH 13. STATE

OIL ☐ GAS ☒ OTHER ☐

2. NAME OF OPERATOR

Northwest Pipeline Corporation

3. ADDRESS OF OPERATOR

P.O. Box 90 - Farmington, NM 87499

4. LOCATION OF WELL (Report location clearly and in accordance with any State requirements.*

See also space 17 below.)
At surface

990' FSL & 790' FWL

RECEIVED

OCT 21 1985

BUREAU OF LAND MANAGEMENT
FARMINGTON RESOURCE AREA

14. PERMIT NO.

15. ELEVATIONS (Show whether DF, RT, GR, etc.)

6775' GR

18. Check Appropriate Box To Indicate Nature of Notice, Report, or Other Data

NOTICE OF INTENTION TO:

TEST WATER SHUT-OFF ☐

FRACTURE TREAT ☐

SHOOT OR ACIDIZE ☐

REPAIR WELL ☐

(Other) ☐

PULL OR ALTER CASING ☐

MULTIPLE COMPLETE ☐

ABANDON* ☐

CHANGE PLANS ☐

SUBSEQUENT REPORT OF:

WATER SHUT-OFF ☐

FRACTURE TREATMENT ☐

SHOOTING OR ACIDIZING ☐

(Other) ☐

REPAIRING WELL ☐

ALTERING CASING ☐

ABANDONMENT* ☒

(NOTE: Report results of multiple completion on Well
Completion or Recompletion Report and Log form.)

17. DESCRIBE PROPOSED OR COMPLETED OPERATIONS (Clearly state all pertinent details, and give pertinent dates, including estimated date of starting any
proposed work. If well is directionally drilled, give subsurface locations and measured and true vertical depths for all markers and zones perti-
nent to this work.) *

10-1 Move in P & A unit & rig up.

10-2 RIH w/ wireline. Shot 4 circulation holes at 2903' (Ojo Alamo 2903' to 3070').

TIH w/ 2-3/8" tbg to 5858'. Squeezed open hole with 85 sx C1 "B" cmt.

POH w/ 2-3/8" tbg to 3730'. Spotted 20 sx C1 "B" cmt across Pictured Cliffs top (3680') from 3730' to 3622'.

POH w/ 2-3/8" tbg to 3490'. Spotted 20 sx C1 "B" cmt across Fruitland top (3440') from 3490' to 3382'.

10-3 POH w/ 2-3/8" tbg to 2953'. Spotted 100 sx C1 "B" cmt across Ojo Alamo top (2903') from 2953' to 2412'. Squeezed in to circulation holes at 2903' w/ 16 bbls wtr. Left top of cmt at 2818'.

POH w/ 2-3/8" tbg to 803'. Spotted 20 sx C1 "B" cmt from 803' to 705' across base of surface casing at 763'.

TOH. Squeezed bradenhead w/ 38 sx C1 "B" cmt.

Approved as to plugging of the well bore.
Liability under bond is retained until
surface restoration is completed.

18. I hereby certify that the foregoing is true and correct

SIGNED

J.R. Vaughan

TITLE Prod. & Drilg. Engineer

DATE

10-15-85

(This space for Federal or State office use)

APPROVED BY

CONDITIONS OF APPROVAL, IF ANY:

TITLE

JRV/ch

*See Instructions on Reverse Side

OIL CON. DIV.
DIST. 3

APPROVED

OCT 23 1985

J. R. Vaughan

AREA MANAGER

FARMINGTON RESOURCE AREA

TIH w/ 2-3/8" tbg. Spotted 100' surface plug w/ 20 sx C1 "B" cmt.
Cut off wellhead and surface casing flange.
Installed 4'X4" dry hole marker.
Set 15 sx surface plug.

RECEIVED

OCT 21 1985

ROSA # 6

P # A

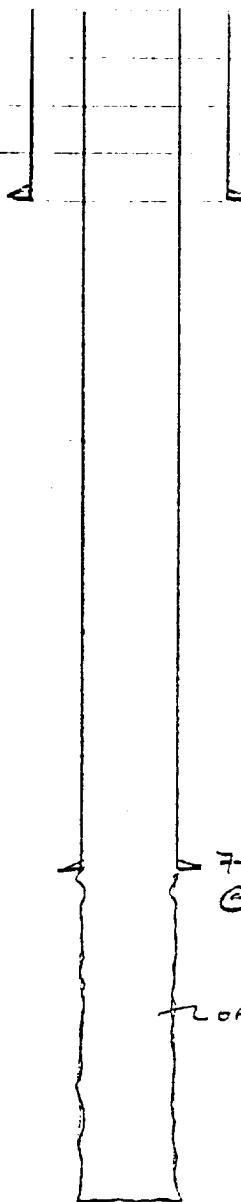
BUREAU OF LAND MANAGEMENT
FARMINGTON RESOURCE AREA

TRV

OCT 10, 1985

BEFORE

AFTER

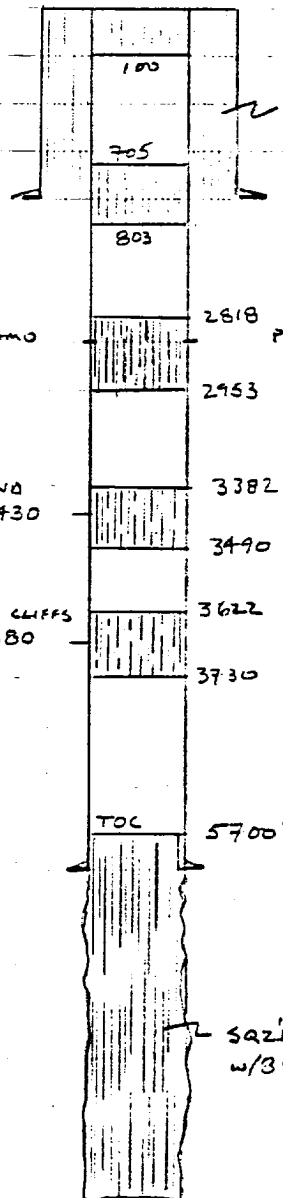


10 3/4" 40#, H-70
@ 763'

7", 20#, J-55
@ 5803

OPEN HOLE

TO 6303'



SQZD BRADINHEAD
W/ 38 SX 61' B'

ALAMO

PEAK HOLES 2903

FRUITLAND
3430

PICTURED CLIFFS
3680

SQZD OPEN HOLE
W/ 35 SX 61' B'