

247
6/3

STATE OF NEW MEXICO

Mr. E Busch

ENERGY, MINERALS AND NATURAL RESOURCES DEPARTMENT
OIL CONSERVATION DIVISION

GARREY CARRUTHERS
GOVERNOR

POST OFFICE BOX 2088
STATE LAND OFFICE BUILDING
SANTA FE, NEW MEXICO 87504
(505) 827-5800

July 18, 1989

Northwest Pipeline Corporation
3539 East 30th Street
Farmington, NM 87401

Attention: Mike Turnbaugh

Administrative Order NSP-1575

Dear Mr. Turnbaugh:

Reference is made to your application of May 17, 1989, for a 232.01-acre non-standard gas proration unit consisting of the following acreage in the Basin Fruitland Coal Gas Pool:

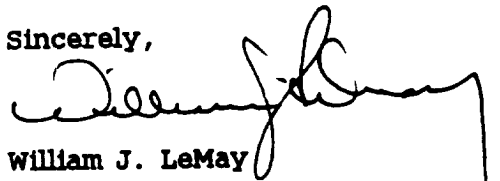
RIO ARriba COUNTY, NEW MEXICO

~~_____~~
~~_____~~ Lots 1 and 2 and the NE/4

It is my understanding that this unit is to be dedicated to your Rosa Unit Well No. 204 to be drilled at a standard coal gas well location 1590 feet from the North line and 1465 feet from the East line (Unit G) of said Section 19.

By authority granted me under the provisions of Rule 6 of the Special Rules and Regulations for the Basin Fruitland Coal Gas Pool, as promulgated by Division Order No. R-8768, the above non-standard gas proration unit is hereby approved.

Sincerely,



William J. LeMay
Director

WJL/MES/ag

cc: Oil Conservation Division - Aztec
NM Oil and Gas Engineering Committee - Hobbs
US Bureau of Land Management - Farmington

RECEIVED

AUG 09 1989

IL CON. DIV.
DIST. 3

*Letterhead
E. B. Smith
5/17/88*

NORTHWEST PIPELINE CORPORATION

PRODUCTION & DRILLING
3539 East 30th Street
Farmington, New Mexico 87401
4320-PD-142-88

May 17, 1988

NMOCD
Attn: Bill LeMay
310 Old Santa Fe Trail
Room #206
Santa Fe, NM 87503

(d)

Re: Application for Non-Standard
Gas Proration Unit
Rosa Unit #204
NE/4 Sec. 19, T31N, R5W
Dedicated Acreage: 232.01 (N/2)

Dear Mr. LeMay:

Northwest Pipeline Corporation requests permission to produce the above captioned well as a Non-Standard Gas Unit. The unorthodox size of this unit is necessitated by a variation in the legal subdivision of the U.S. Public Land Survey. The offset operators have been notified of our intentions by certified mail and they will forward any objections directly to your office. Copies of these letters along with the receipts for certified mail are enclosed.

This well was originally drilled on 160 acres. With the implementations of the new pool rules the north half of Sec. 19 will now be dedicated to this well.

Sincerely,

Mike Turnbaugh

Mike Turnbaugh
Drilling Superintendent

MJT/ch
disk 13

RECEIVED
AUG 22 1988
OIL COMPANY

NORTHWEST PIPELINE CORPORATION

PRODUCTION & DRILLING
3539 East 30th Street
Farmington, New Mexico 87401
4320-PD-143-89

May 17, 1989

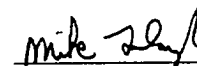
Meridian Oil
801 Cherry St.
Fort Worth, TX 76102

Re: Non-Standard Gas Proration Unit
Rosa Unit #204
NE/4 Sec. 19, T31N, R5W

Dear Sirs:

Northwest Pipeline has requested permission from the New Mexico Oil & Gas Conservation division to produce the above captioned well as a Non-Standard Gas Unit. Our records show you to be an offset operator. If you have any objections to this request, notify Bill Lemay with NMOCD in Santa Fe, New Mexico within 30 days. This letter is being sent by certified mail in accordance with NMOCD regulations.

Sincerely,



Mike Turnbaugh, Senior Engineer

MJT/ch
disk 15

RECEIVED
AUG 09 1989
OIL CON. DIV.
DIST. 3

All distances must be from the outer boundaries of the Section.

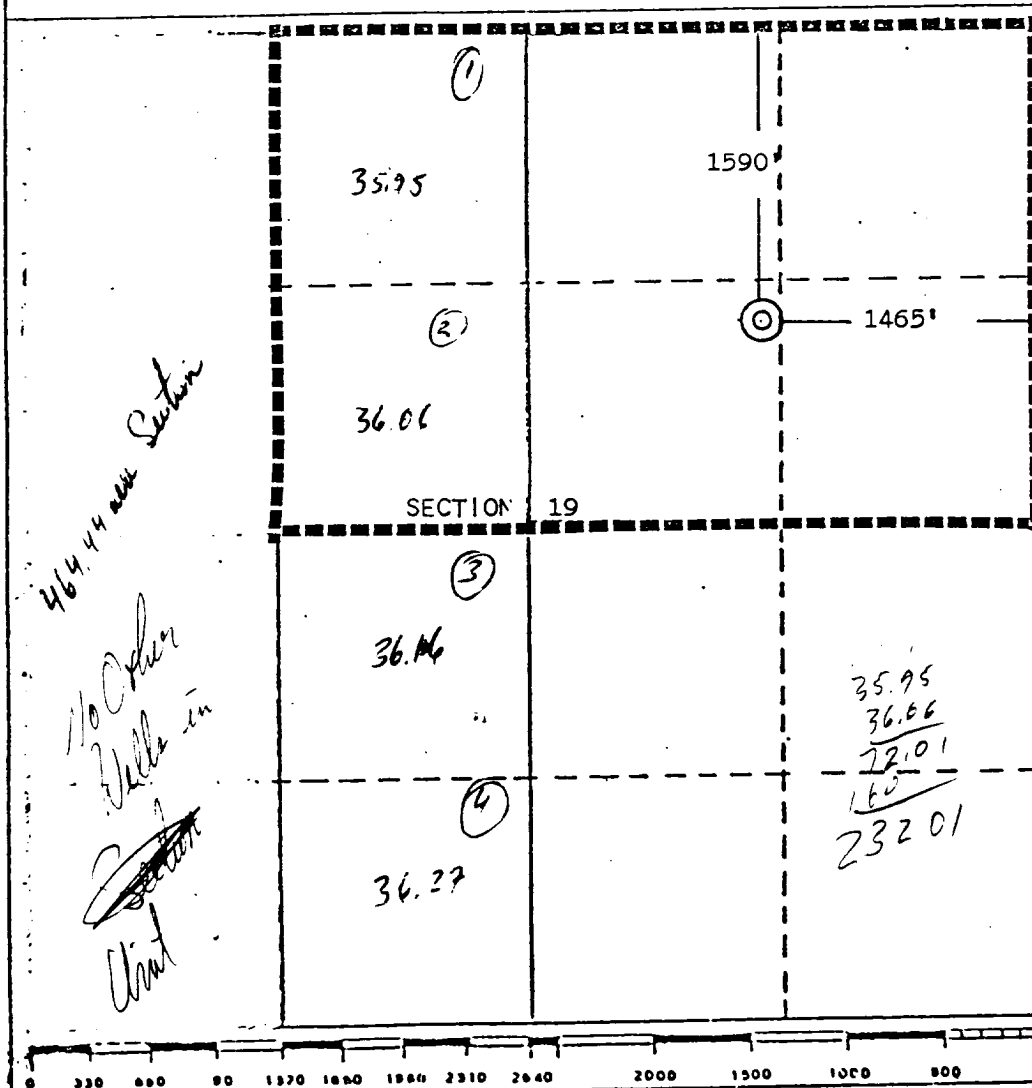
Operator Northwest Pipeline Corporation		Lease Rosa Unit		Well No. 204
Unit Letter G	Section 19	Township 31 North	Range 5 West	County Rio Arriba
Actual Footage Location of Well: 1590 feet from the North line and 1465 feet from the East line				
Ground Level Elev. 6340	Producing Formation Fruitland	Pool Undesignated Fruitland	Dedicated Acreage: 160-232.01 Acres	

1. Outline the acreage dedicated to the subject well by colored pencil or hachure marks on the plat below.
2. If more than one lease is dedicated to the well, outline each and identify the ownership thereof (both as to working interest and royalty).
3. If more than one lease of different ownership is dedicated to the well, have the interests of all owners been consolidated by communitization, unitization, force-pooling, etc?

☒ Yes ☐ No If answer is "yes," type of consolidation Unitization

If answer is "no," list the owners and tract descriptions which have actually been consolidated. (Use reverse side of this form if necessary.)

No allowable will be assigned to the well until all interests have been consolidated (by communitization, unitization, forced-pooling, or otherwise) or until a non-standard unit, eliminating such interests, has been approved by the Division.



CERTIFICATION

I hereby certify that the information contained herein is true and complete to the best of my knowledge and belief.

Name
Mike J. Zumbach

Position
Senior Engineer

Company
Northwest Pipeline Corp.

Date
5-3-88

I hereby certify that the location shown on this plat is from field notes of actual survey made by me or under my supervision, and that the same is true and correct to the best of my knowledge and belief.

Date Surveyed
April 25, 1988

Registered Professional Engineer and/or Land Surveyor
Edgar L. Risenhoover

Certificate No. 5979
Edgar L. Risenhoover, L.S.