

UNITED STATES
DEPARTMENT OF THE INTERIOR
BUREAU OF LAND MANAGEMENT

APPLICATION FOR PERMIT TO DRILL, DEEPEN, OR PLUG BACK

1a. TYPE OF WORK

DRILL ☒

DEEPEN ☐

PLUG BACK ☐

b. TYPE OF WELL

OIL
WELL ☐

GAS
WELL ☒

OTHER

SINGLE
ZONE ☒

MULTIPLE
ZONE ☐

2. NAME OF OPERATOR

Northwest Pipeline Corporation

3. ADDRESS OF OPERATOR

3539 East 30th Street - Farmington, NM 87401

4. LOCATION OF WELL (Report location clearly and in accordance with any State requirements.)*

At surface

1155' FNL & 1150' FEL NE/4 NE/4

At proposed prod. zone
Same

14. DISTANCE IN MILES AND DIRECTION FROM NEAREST TOWN OR POST OFFICE*

Approximately 20 miles to Gobernador

15. DISTANCE FROM PROPOSED*

LOCATION TO NEAREST
PROPERTY OR LEASE LINE, FT.
(Also to nearest drlg. unit line, if any)

1150'

16. NO. OF ACRES IN LEASE

N/A 2518.04

17. NO. OF ACRES ASSIGNED
TO THIS WELL

111.9

18. DISTANCE FROM PROPOSED LOCATION*
TO NEAREST WELL, DRILLING, COMPLETED,
OR APPLIED FOR, ON THIS LEASE, FT.

3645'

19. PROPOSED DEPTH

3275'

20. ROTARY OR CABLE TOOLS

Rotary

21. ELEVATIONS (Show whether DF, RT, GR, etc.)

6265' GR 6264

DRILLING OPERATIONS AUTHORIZED ARE
SUBJECT TO COMPLIANCE WITH ATTACHED
"GENERAL REQUIREMENTS".

22. APPROX. DATE WORK WILL START*

23. PROPOSED CASING AND CEMENTING PROGRAM

This action is subject to technical and
procedural review pursuant to 43 CFR 3105.3
and appeal pursuant to 43 CFR 3105.4.
QUANTITY OF CEMENT

SIZE OF HOLE	SIZE OF CASING	WEIGHT PER FOOT	SETTING DEPTH	QUANTITY OF CEMENT
12-1/4"	9-5/8"	36#	200'	125 cu.ft.
8-3/4"	7"	20#	2905'	140 cu.ft.
6-1/4"	5-1/2"	23#	3275'	Open hole completion

The NE/4 of Sec. 24 is dedicated to this well.

Application includes right-of-way for the construction of the water pipeline
route which will follow the route on the attached survey.

RECEIVED
AUG 11 9 1988
OIL CON. DIV.
DIST. 3

201720 PM 1:0
201720 PM 1:0
201720 PM 1:0

IN ABOVE SPACE DESCRIBE PROPOSED PROGRAM: If proposal is to deepen or plug back, give data on present productive zone and proposed new productive zone. If proposal is to drill or deepen directionally, give pertinent data on subsurface locations and measured and true vertical depths. Give blowout preventer program, if any.

24.

SIGNED

Mike J. Lurnbaugh

TITLE

Sr. Engineer

DATE

5-10-88

(This space for Federal or State office use)

PERMIT NO.

APPROVAL DATE

APPROVED BY

TITLE

DATE

CONDITIONS OF APPROVAL, IF ANY:

MJT/ch-1

NSP-1537

EB

*See Instructions On Reverse Side

**NEW MEXICO OIL CONSERVATION COMMISSION
WELL LOCATION AND ACREAGE DEDICATION PLAT**

Form C-102
Supersedes C-12
Effective 1-1-65

All distances must be from the outer boundaries of the Section.

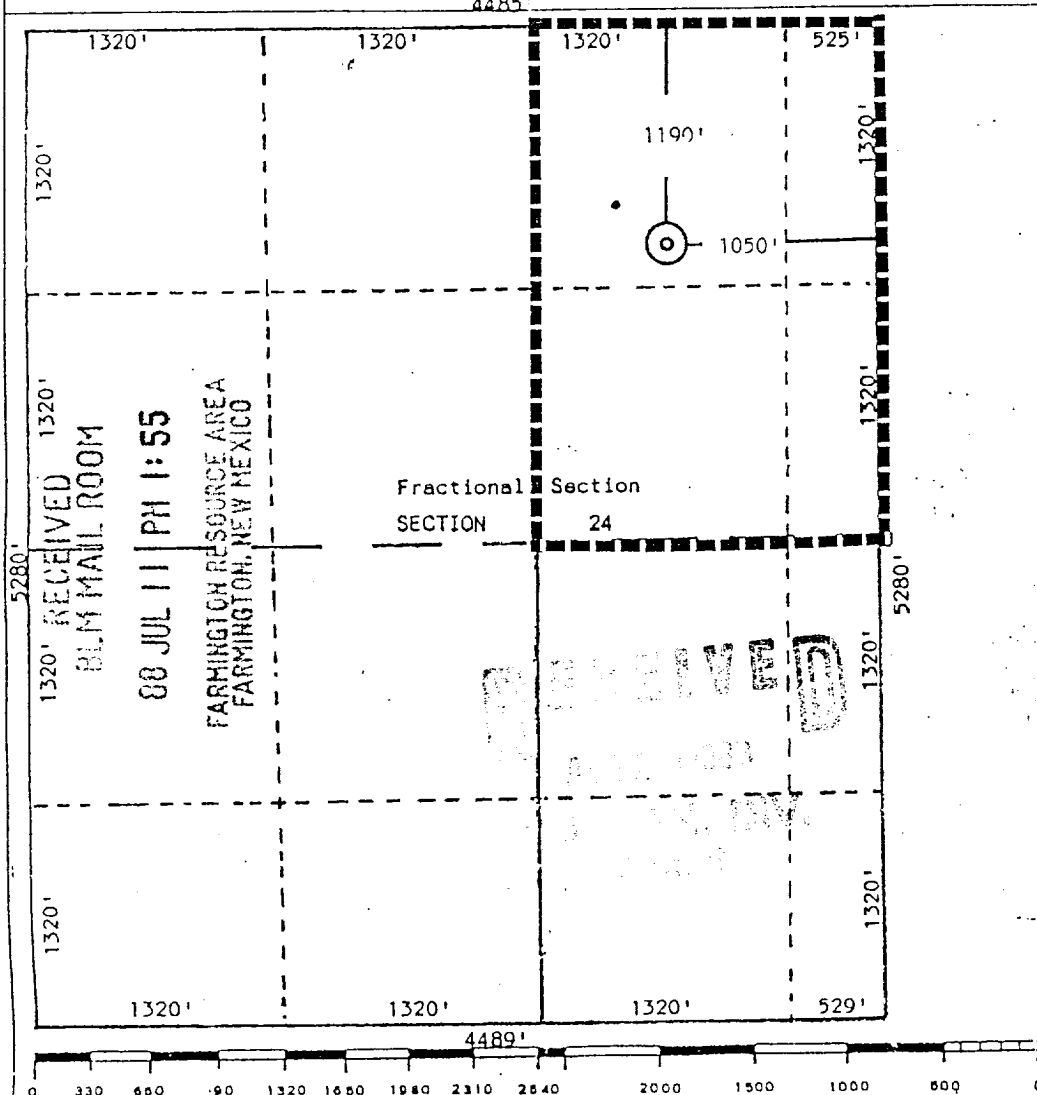
Operator Northwest Pipeline Corporation			Lease Rosa Unit		Well No. 206
Unit Letter B	Section 24	Township 31 North	Range 6 West	County Rio Arriba	
Actual Footage Location of Well:					
1190 feet from the North line and		1050 feet from the East line			
Ground Level Elev. 6264	Producing Formation Fruitland COAL	Pool Undesignated		Dedicated Acreage: 111.9 Acres	

- Outline the acreage dedicated to the subject well by colored pencil or hachure marks on the plat below.
- If more than one lease is dedicated to the well, outline each and identify the ownership thereof (both as to working interest and royalty).
- If more than one lease of different ownership is dedicated to the well, have the interests of all owners been consolidated by communitization, unitization, force-pooling, etc?

☒ Yes ☐ No If answer is "yes," type of consolidation Unitization

If answer is "no," list the owners and tract descriptions which have actually been consolidated. (Use reverse side of this form if necessary.) _____

No allowable will be assigned to the well until all interests have been consolidated (by communitization, unitization, forced-pooling, or otherwise) or until a non-standard unit, eliminating such interests, has been approved by the Commission.



CERTIFICATION

I hereby certify that the information contained herein is true and complete to the best of my knowledge and belief.

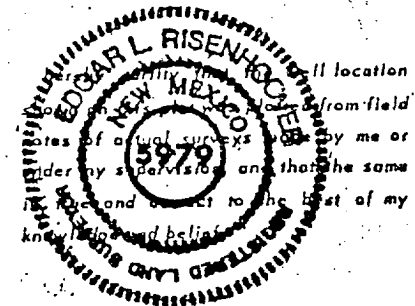
Mike J. Turnbaugh
Name

Mike J. Turnbaugh

Position
Sr. Drilling Engineer

Company
Northwest Pipeline Corp.

Date
July 6, 1988



Date Surveyed
Revised Plat July 1, 1988
Registered Professional Engineer
and/or Land Surveyor

Edgar L. Risenhoover
Certificate No. 5979
Edgar L. Risenhoover, L.S.

30-039-24271

NW
WELL FILE

Form 3160-3
(November 1983)
(formerly 9-331C)

SUBMIT IN TRIPPLICATE*
(Other instructions on
reverse side)

Form approved.
Budget Bureau No. 1004-0136
Expires August 31, 1985

UNITED STATES
DEPARTMENT OF THE INTERIOR
BUREAU OF LAND MANAGEMENT

APPLICATION FOR PERMIT TO DRILL, DEEPEN, OR PLUG BACK

5. LEASE DESIGNATION AND SERIAL NO.
SF-078767

6. IF INDIAN, ALLOTTEE OR TRIBE NAME

7. UNIT AGREEMENT NAME
Rosa Unit

8. FARM OR LEASE NAME

9. WELL NO.
206

10. FIELD AND POOL, OR WILDCAT ~~COAL~~
Undesignated Fruitland

11. SEC., T., R., M., OR BLK.
AND SURVEY OR AREA
B
Sec. 24, T31N, R6W

12. COUNTY OR PARISH
Rio Arriba

13. STATE
New Mexico

1a. TYPE OF WORK
DRILL ☒ DEEPEN ☐ PLUG BACK ☐

b. TYPE OF WELL
OIL WELL ☐ GAS WELL ☒ OTHER ☐ SINGLE ZONE ☒ MULTIPLE ZONE ☐

2. NAME OF OPERATOR
Northwest Pipeline Corporation

3. ADDRESS OF OPERATOR
3539 East 30th Street - Farmington, NM 87401

4. LOCATION OF WELL (Report location clearly and in accordance with any State requirements.)
At surface 1155' FNL & 1150' FEL NE/4 NE/4
1190
At proposed prod. zone 1050
Same

14. DISTANCE IN MILES AND DIRECTION FROM NEAREST TOWN OR POST OFFICE*
Approximately 20 miles to Gobernador

15. DISTANCE FROM PROPOSED*
LOCATION TO NEAREST
PROPERTY OR LEASE LINE, FT.
(Also to nearest drlg. unit line, if any) 1150'

16. NO. OF ACRES IN LEASE
N/A 2518.04

17. NO. OF ACRES ASSIGNED
TO THIS WELL 111.9

18. DISTANCE FROM PROPOSED LOCATION*
TO NEAREST WELL, DRILLING, COMPLETED,
OR APPLIED FOR, ON THIS LEASE, FT. 3645'

19. PROPOSED DEPTH 3275'

20. ROTARY OR CABLE TOOLS
Rotary

21. ELEVATIONS (Show whether DF, RT, GR, etc.)
6265' GR 62.64

22. APPROX. DATE WORK WILL START*

23. DRILLING OPERATIONS AUTHORIZED ARE
SUBJECT TO COMPLIANCE WITH ATTACHED
"GENERAL REGS. REVENUES"
PROPOSED CASING AND CEMENTING PROGRAM
This action is subject to technical and
procedural review prior to 43 CFR 3165.3
and appeal pursuant to 43 CFR 3165.4.

SIZE OF HOLE	SIZE OF CASING	WEIGHT PER FOOT	SETTING DEPTH	QUANTITY OF CEMENT
12-1/4"	9-5/8"	36#	200'	125 cu.ft.
8-3/4"	7"	20#	2905'	140 cu.ft.
6-1/4"	5-1/2"	23#	3275'	Open hole completion

The NE/4 of Sec. 24 is dedicated to this well.

Application includes right-of-way for the construction of the water pipeline route which will follow the route on the attached survey.

IN ABOVE SPACE DESCRIBE PROPOSED PROGRAM: If proposal is to deepen or plug back, give data on present productive zone and proposed new productive zone. If proposal is to drill or deepen directionally, give pertinent data on subsurface locations and measured and true vertical depths. Give blowout preventer program, if any.

24. SIGNED Mike J. Turnbaugh TITLE Sr. Engineer DATE 5-10-88

(This space for Federal or State office use)

PERMIT NO. APPROVAL

APPROVED BY TITLE

CONDITIONS OF APPROVAL, IF ANY:

MJT/ch-1 NSP-1537 9/16 NMOC

*See Instructions On Reverse Side

RECEIVED
APPROVED
AS AMENDED
DATE AUG 16 1988
AREA MANAGER

NEW MEXICO OIL CONSERVATION COMMISSION
WELL LOCATION AND ACREAGE DEDICATION PLAT

Form C-102
Supersedes C-128
Effective 1-1-65.

All distances must be from the outer boundaries of the Section.

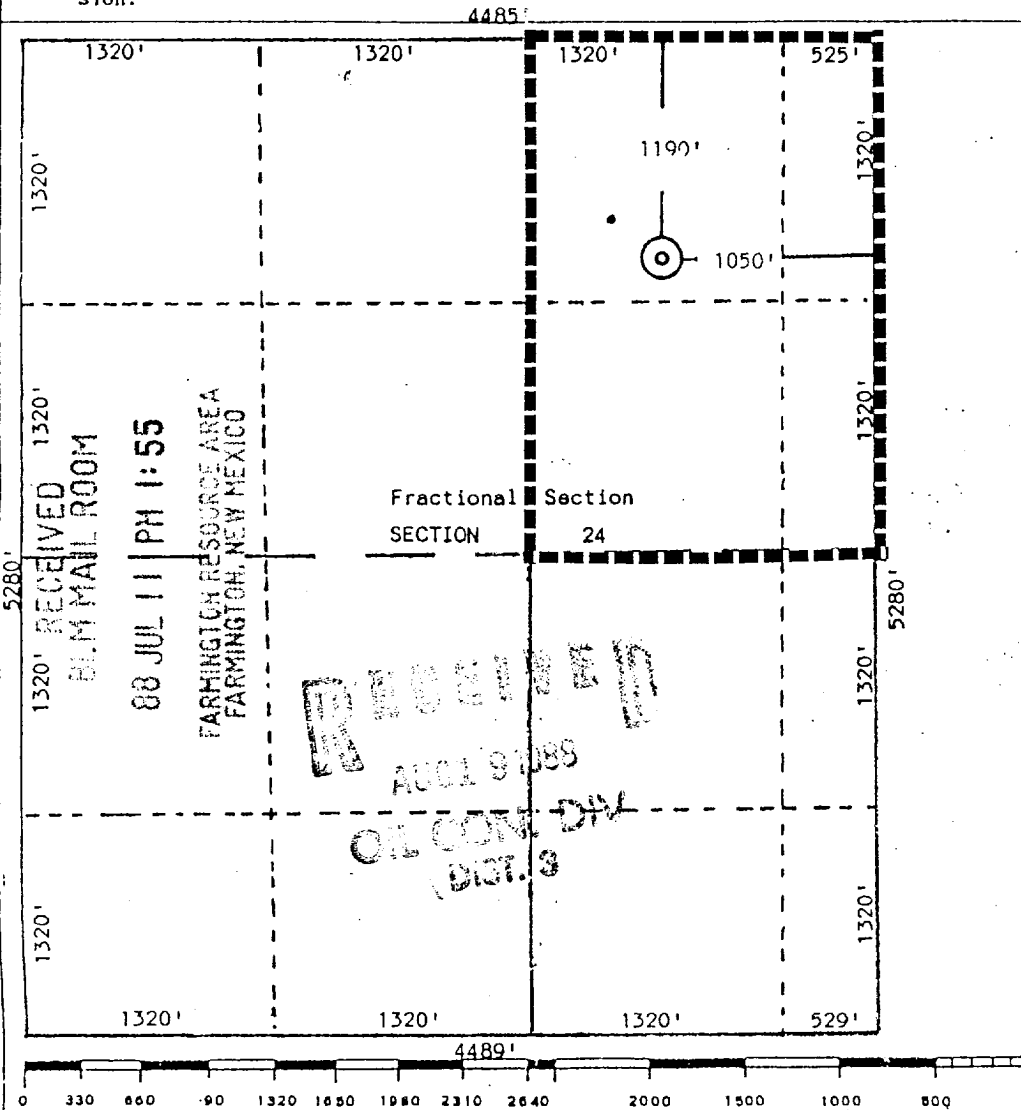
Operator Northwest Pipeline Corporation			Lease Rosa Unit		Well No. 206
Unit Letter B	Section 24	Township 31 North	Range 6 West	County Rio Arriba	
Actual Footage Location of Well: 1190 feet from the North line and 1050 feet from the East line					
Ground Level Elev. 6264	Producing Formation Fruitland <i>COAL</i>		Pool Undesignated	Dedicated Acreage: 111.9 Acres	

1. Outline the acreage dedicated to the subject well by colored pencil or hachure marks on the plat below.
2. If more than one lease is dedicated to the well, outline each and identify the ownership thereof (both as to working interest and royalty).
3. If more than one lease of different ownership is dedicated to the well, have the interests of all owners been consolidated by communitization, unitization, force-pooling, etc?

☒ Yes ☐ No If answer is "yes," type of consolidation Unitization

If answer is "no," list the owners and tract descriptions which have actually been consolidated. (Use reverse side of this form if necessary.)

No allowable will be assigned to the well until all interests have been consolidated (by communitization, unitization, forced-pooling, or otherwise) or until a non-standard unit, eliminating such interests, has been approved by the Commission.



CERTIFICATION

I hereby certify that the information contained herein is true and complete to the best of my knowledge and belief.

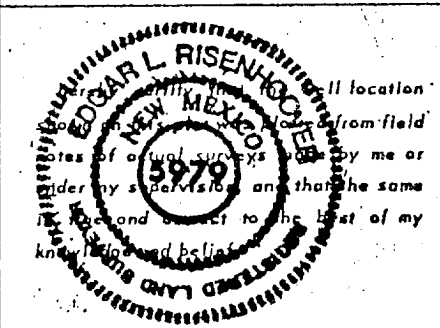
Mike J. Turnbaugh
Name

Mike J. Turnbaugh

Sr. Drilling Engineer

Northwest Pipeline Corp.

July 6, 1988



Revised Plat July 1, 1988

Registered Professional Engineer and/or Land Surveyor

Edgar L. Risenhoover

Certificate No. 5979

Edgar L. Risenhoover, L.S.