

UNITED STATES  
DEPARTMENT OF INTERIOR  
BUREAU OF LAND MANAGEMENT

FORM APPROVED  
Budget Bureau No. 1004-0135  
Expires: March 31, 1993

SUNDRY NOTICE AND REPORTS ON WELLS

Do not use this form for proposals to drill or to deepen or reentry to a different reservoir. Use "APPLICATION TO DRILL" for permit for such proposals

5. Lease Designation and Serial No.  
SF-078767

6. If Indian, Allottee or Tribe Name

7. If Unit or CA, Agreement Designation  
ROSA UNIT

8. Well Name and No.  
ROSA UNIT #228

9. API Well No.  
30-039-24362

10. Field and Pool, or Exploratory Area  
BASIN FRUITLAND COAL

11. County or Parish, State  
RIO ARRIBA, NM

SUBMIT IN TRIPLICATE

1. Type of Well  
☐ Oil Well ☒ Gas Well ☐ Other

2. Name of Operator  
WILLIAMS PRODUCTION COMPANY

3. Address and Telephone No.  
PO BOX 3102 MS 37-2, TULSA, OK 74101 (918) 573-6254

4. Location of Well (Footage, Sec., T., R., M., or Survey Description)  
1850' FNL & 1355' FEL, SW/4 NE/4, SEC 07 T31N R5W

CHECK APPROPRIATE BOX(s) TO INDICATE NATURE OF NOTICE, REPORT, OR OTHER DATA

TYPE OF SUBMISSION

- ☒ Notice of Intent  
☐ Subsequent Report  
☐ Final Abandonment

TYPE OF ACTION

- ☐ Abandonment  
☐ Recompletion  
☐ Plugging Back  
☐ Casing Repair  
☐ Altering Casing  
☒ Other Cavitation

- ☐ Change of Plans  
☐ New Construction  
☐ Non-Routine Fracturing  
☐ Water Shut-Off  
☐ Conversion to Injection  
☐ Dispose Water  
(Note: Report results of multiple completion on Well Completion or Recompletion Report and Log form.)

13. Describe Proposed or Completed Operations (Clearly state all pertinent details, and give pertinent dates, including estimated date of starting any proposed work. If well is directionally drilled, give subsurface locations and measured and true vertical depths for all markers and zones pertinent to this work.)\*

Williams Production Company plans to cavitate this well as per the attached procedure. Estimated start date 9/30/1999.

RECEIVED  
SEP 30 1999

14. I hereby certify that the foregoing is true and correct

Signed Tracy Ross  
TRACY ROSS

Title Production Analyst Date August 31, 1999

(This space for Federal or State office use)

Approved by WAYNE TOWNSEND

Title A.T.C.

Date 9-28-99


Conditions of approval, if any:

8-31-99

WILLIAMS PRODUCTION COMPANY  
CAVITATION PROGNOSIS  
ROSA 228

Purpose: To pull the liner and cavitate the Fruitland Coal zone.

1. Notify BLM 24 hours to moving in.  
Load tank with produced water. Do not filter water unless necessary.
2. MIRUSU. Nipple up BOP's, 2 blooie lines, working valves and 2" relief line. Test BOP's.
3. RIH to TD and check for fill. TOO H w/ 2-3/8" tubing and LD.
4. TIH to liner top and mill it out as follows.  
Pick up rotary shoe, bumper sub, jars, 6-1/4" mill and 4-3/4" drill collars on 3-1/2" drill pipe and TIH.  
Mill the top hold down slips. TOO H. Pick up a spear and the fishing tool assembly and TIH. Spear into the liner top and jar liner loose.
5. TOO H w/ 5-1/2" Liner and LD. Re use liner if possible.
6. PU 6-1/4" bit on 3-1/2" DP and TIH. Clean out to TD. TOO H.
7. PU 7" X 9-1/2" Underreamer and underream from 2919' to TD'. TOO H.
8. CAVITATE  
TIH w/ 6-1/4" bit on 3-1/2" DP and circulate out fill. Run 10 to 5 bbl sweeps using 1 GPB of soap if necessary.
9. PU bit drill pipe inside casing. Pressure up hole( 2500 psi max pressure) then surge. Do this an avg of 5 times. Gauge well after each cycle.
10. Repeat. Maximum on location 3 weeks or until gas production no longer increases.  
**NOTE: Accurate gauges will be essential in determining the success of each step.**
11. TOH w/ 6-1/4" bit on 3-1/2" DP.
12. PU 5-1/2" liner on 3-1/2 DP. Run in with reconditioned JGS liner hanger with left hand threads and L A set shoe on bottom of liner. Rotate down if necessary. Land liner @ 3121' with ±75' overlap in 7". TOO H w/ 3-1/2" DP and LD.
13. Review perf depth with engineering. Perforate liner using 4 SPF, 0.71" big holes (Blue Jet) at the following depths; 2946'-2964', 3006'-3024', 3096'-3120'(as low as possible).
14. PU 2-3/8", 4.7#, J-55, 8rd, EUE tbg and RIH. Land tubing @ ±3080'.
15. ND BOP and NU wellhead. Shut well in for buildup.
16. Cleanup location and release rig.

  
Sterg Kalgiris  
Senior Engineer

# ROSA UNIT #228

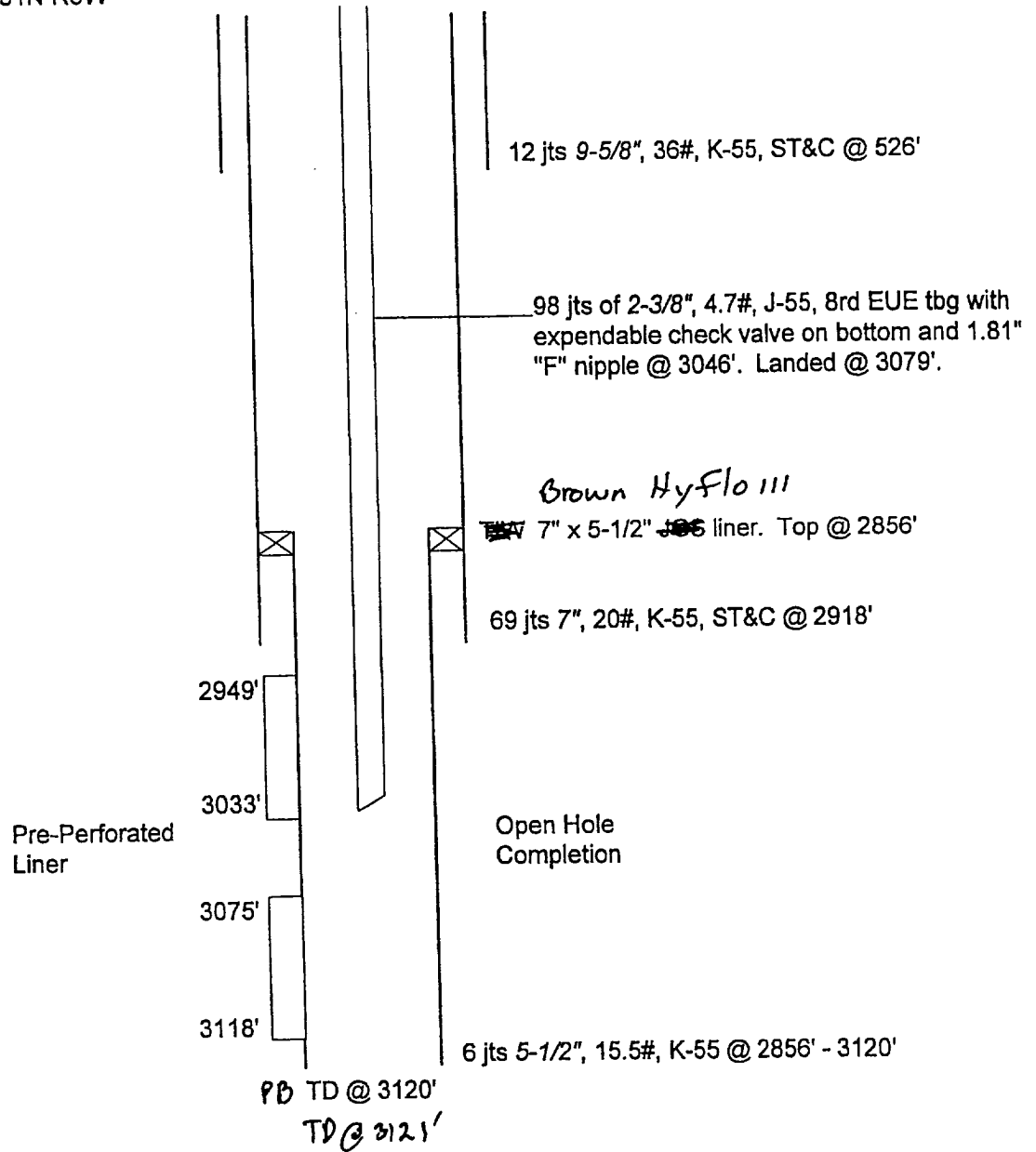
## BASIN FRUITLAND COAL

1850' FNL 1355' FEL  
SW/4 NE/4 SEC 7G T31N R5W  
Ria Arriba Co, NM

Elevation: 6270' GL  
KB 12'

Drilled in 1990  
ID'd in 1993

Ojo Alamo 2340'  
Kirtland 2445'  
Fruitland 2850'



HOLE SIZE	CASING	CEMENT	TOP OF CMT
12-1/4"	9-5/8" 36#	400 sx	SURFACE
8-3/4"	7" 20#	600 sx	SURFACE
6-1/4"	5-1/2" 15.5#	Did Not Cement	N/A