

30-039-24523

Form 3160-3
(November 1983)
(formerly 9-331C)

SUBMIT IN TRIPLICATE*
(Other instructions on
reverse side)

Form approved.
Budget Bureau No. 1004-0136
Expires August 31, 1985

UNITED STATES
DEPARTMENT OF THE INTERIOR
BUREAU OF LAND MANAGEMENT

APPLICATION FOR PERMIT TO DRILL, DEEPEN, OR PLUG BACK

1a. TYPE OF WORK

DRILL ☒

DEEPEN ☐

PLUG BACK ☐

b. TYPE OF WELL

OIL
WELL ☐

GAS
WELL ☒

OTHER

SINGLE
ZONE ☒

MULTIPLE
ZONE ☐

2. NAME OF OPERATOR

Northwest Pipeline Corporation

3. ADDRESS OF OPERATOR

3539 E. 30th Street - Farmington, NM 87401

4. LOCATION OF WELL (Report location clearly and in accordance with any State requirements.*)

At surface
1020' FSL & 1315' FWL SW/4 SW/4
At proposed prod. zone

14. DISTANCE IN MILES AND DIRECTION FROM NEAREST TOWN OR POST OFFICE*

Approximately 20 miles to Gobernador

15. DISTANCE FROM PROPOSED*

LOCATION TO NEAREST
PROPERTY OR LEASE LINE, FT. 1020'
(Also to nearest drig. unit line, if any)

16. NO. OF ACRES IN LEASE

NA

17. NO. OF ACRES ASSIGNED
TO THIS WELL

271.74

18. DISTANCE FROM PROPOSED LOCATION*

TO NEAREST WELL, DRILLING, COMPLETED,
OR APPLIED FOR, ON THIS LEASE, FT. + 2500'

19. PROPOSED DEPTH

3108'

20. ROTARY OR CABLE TOOLS

Rotary

21. ELEVATIONS (Show whether DF, RT, GR, etc.)

6263' DRILLING OPERATIONS AUTHORIZED ARE

22. APPROX. DATE WORK WILL START*

March 1, 1989

23. SUBJECT TO COMPLIANCE WITH ATTACHED CASING AND CEMENTING PROGRAM

"GENERAL REQUIREMENTS"

SIZE OF HOLE	SIZE OF CASING	WEIGHT PER FOOT	SETTING DEPTH	QUANTITY OF CEMENT
12-1/4"	9-5/8"	32#	200'	125 cu. ft.
8-3/4"	7"	20#	2953'	155 cu. ft.
6-1/4"	5-1/2"	23#	3108'	Open hole completion

The 13 is dedicated to this well.

RECEIVED
MAIL ROOM
68 DEC 20 AM 11:39
FARMINGTON RESOURCE AREA
FARMINGTON, NEW MEXICO

RECEIVED
AUG 16 1989
OIL CON. DIV.
DIST. 3

IN ABOVE SPACE DESCRIBE PROPOSED PROGRAM: If proposal is to deepen or plug back, give data on present productive zone and proposed new productive zone. If proposal is to drill or deepen directionally, give pertinent data on subsurface locations and measured and true vertical depths. Give blowout preventer program, if any.

24.

SIGNED

Mike Turnbaugh

TITLE

Senior Engineer

DATE

12-19-88

(This space for Federal or State office use)

PERMIT NO.

APPROVAL DATE

APPROVED
AS AMENDED

APPROVED BY

TITLE

CONDITIONS OF APPROVAL, IF ANY:

AUG 14 1989

AREA MANAGER

ch-1

Hold C-104 FOR NSL

NMOCC

*See Instructions On Reverse Side

Title 18 U.S.C. Section 1001, makes it a crime for any person knowingly and willfully to make to any department or agency of the United States any false, fictitious or fraudulent statements or representations as to any matter within its jurisdiction.

NEW MEXICO OIL CONSERVATION COMMISSION
WELL LOCATION AND ACREAGE DEDICATION PLAT

Form C-102
Supersedes C-128
Effective 1-1-65

All distances must be from the outer boundaries of the Section.

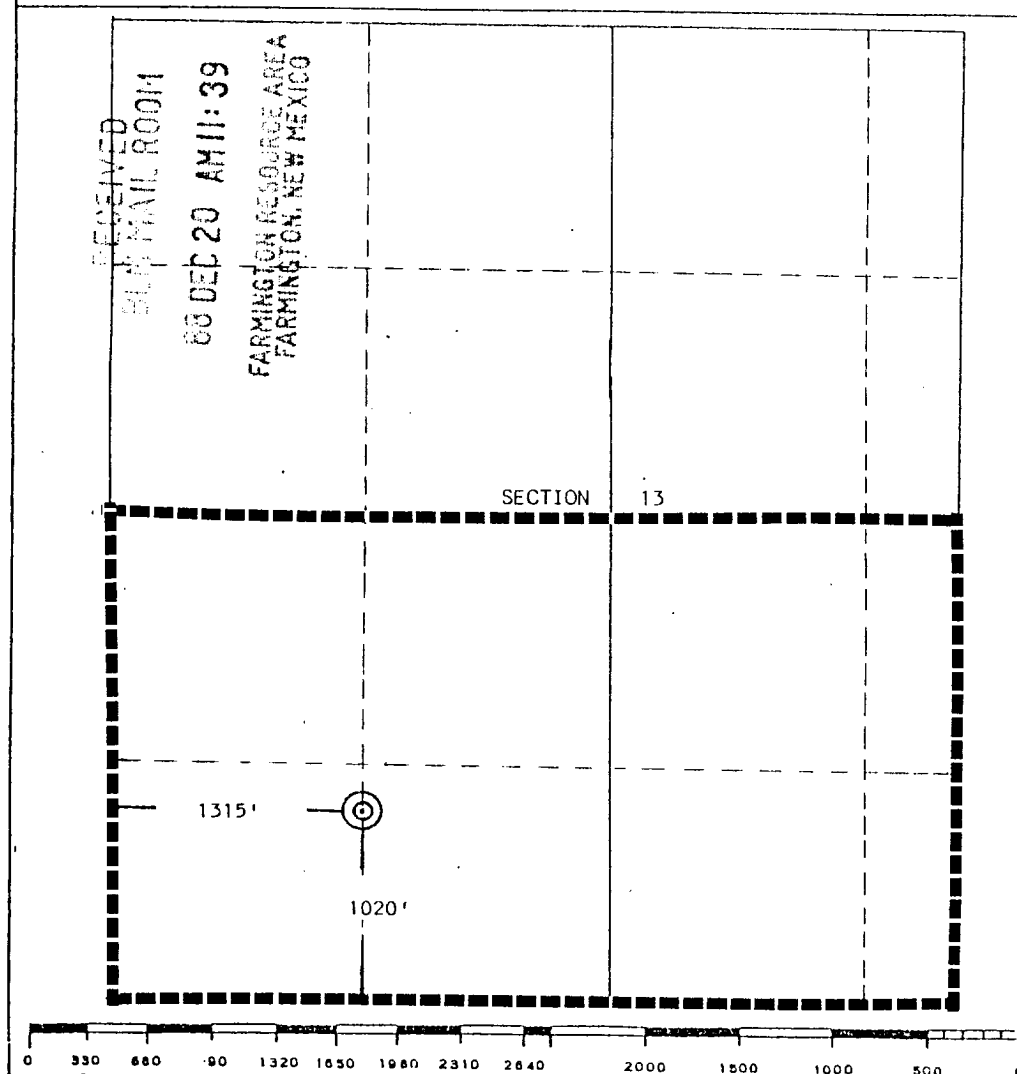
Operator Northwest Pipeline Corporation			Lease Rosa Unit		Well No. 210
Unit Letter M	Section 13	Township 31 North	Range 6 West	County Rio Arriba	
Actual Footage Location of Well: 1020 feet from the South line and 1315 feet from the West line					
Ground Level Elev. 6263	Producing Formation Fruitland	Pool Basin Fruitland Pool		Dedicated Acreage: 271.74 Acres	

1. Outline the acreage dedicated to the subject well by colored pencil or hachure marks on the plat below.
2. If more than one lease is dedicated to the well, outline each and identify the ownership thereof (both as to working interest and royalty).
3. If more than one lease of different ownership is dedicated to the well, have the interests of all owners been consolidated by communitization, unitization, force-pooling, etc?

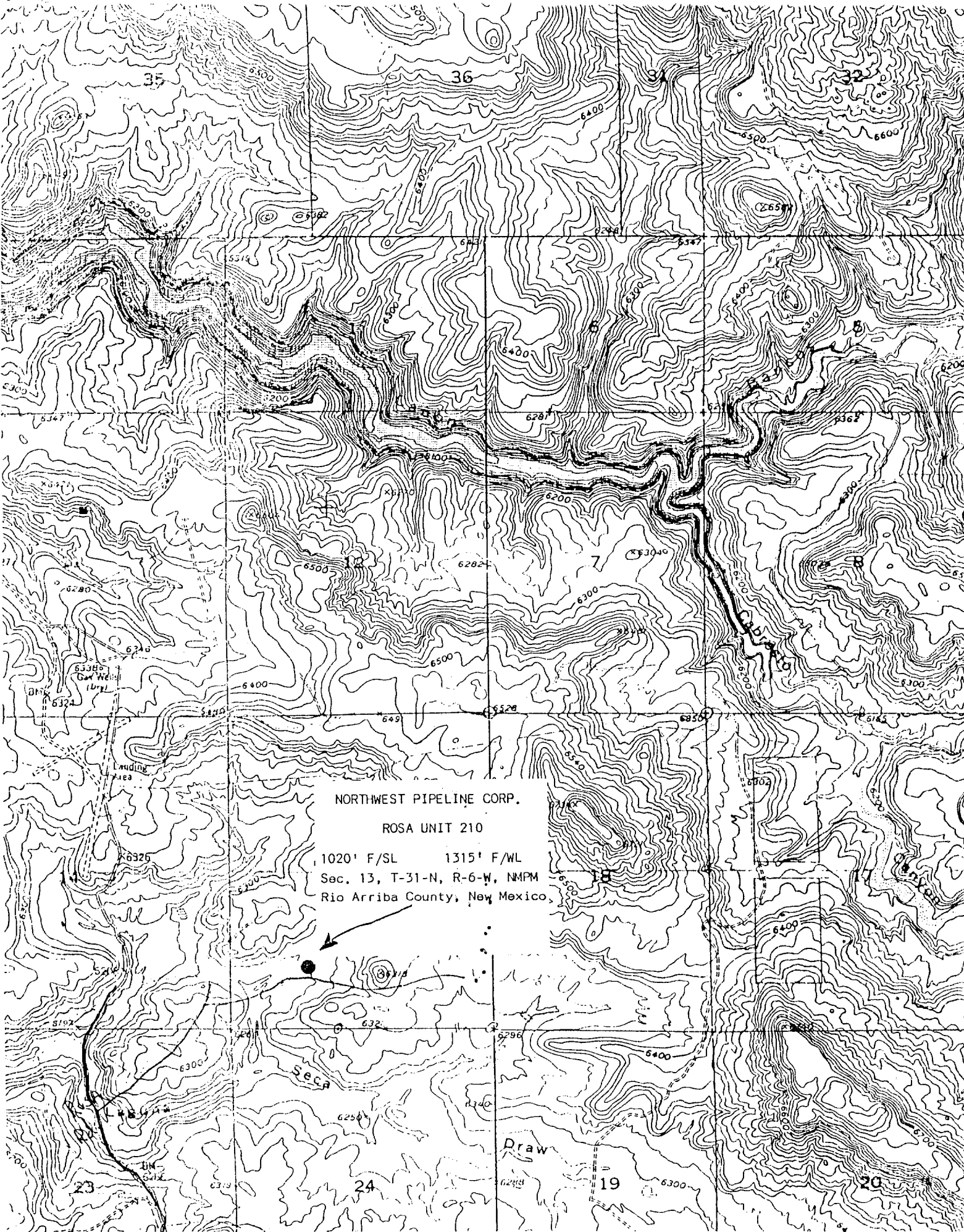
☒ Yes ☐ No If answer is "yes," type of consolidation unitization

If answer is "no," list the owners and tract descriptions which have actually been consolidated. (Use reverse side of this form if necessary.)

No allowable will be assigned to the well until all interests have been consolidated (by communitization, unitization, forced-pooling, or otherwise) or until a non-standard unit, eliminating such interests, has been approved by the Commission.



CERTIFICATION	
I hereby certify that the information contained herein is true and complete to the best of my knowledge and belief.	
<i>Mike Turnbaugh</i>	
Name	Mike Turnbaugh
Position	Senior Engineer
Company	Northwest Pipeline Corp.
Date	10-21-88
I hereby certify that the well location shown on this plat was determined by me or under my supervision, and that the same is true and correct to the best of my knowledge.	
Date Surveyed	September 14, 1988
Registered Professional Engineer and/or Land Surveyor	
<i>Edgar L. Risenhoover</i>	
Certificate No.	5979
Edgar L. Risenhoover, L.S.	



NORTHWEST PIPELINE CORP.

ROSA UNIT 210

1020' F/SL 1315' F/WL
Sec. 13, T-31-N, R-6-W, NMPM
Rio Arriba County, New Mexico

Draw

(1)
15.84

15.50

31.74

80.00

111.74

160.00

271.74