

UNITED STATES
DEPARTMENT OF THE INTERIOR
BUREAU OF LAND MANAGEMENT

RECEIVED

DEC 07 1990

Sundry Notices and Reports on Wells

OIL CON. DIV.

DIST. 3

1. Type of Well
GAS

2. Name of Operator
Meridian Oil Inc.

3. Address & Phone No. of Operator
Box 4289, Farmington, NM 87499 (505) 326-9700

4. Location of Well, Footage, Sec, T, R, M.
1230'N, 680'W Sec. 12, T-31-N, R-4-W, NMPM

5. Lease Number
SF-078887

6. If Indian, All. or
Tribe Name

7. Unit Agreement Name
Rosa Unit

8. Well Name & Number
Rosa Unit #296

9. API Well No.

10. Field and Pool
Basin Fruitland Coal

11. County and State
Rio Arriba County, NM

12. CHECK APPROPRIATE BOX TO INDICATE NATURE OF NOTICE, REPORT, OTHER DATA

Type of Submission

Type of Action

☐ Notice of Intent

☐ Abandonment

☒ Change of Plans

☐ Subsequent Report

☐ Recompletion

☐ New Construction

☐ Final Abandonment

☐ Plugging Back

☐ Non-Routine Fracturing

☐ Casing Repair

☐ Water Shut Off

☐ Altering Casing

☐ Conversion to Injection

☐ Other

13. Describe Proposed or Completed Operations

Reference is made to Evergreen Operating Corp's Application for Permit to Drill the Rosa Unit #296 submitted 06-13-90 at 1190'FNL, 670'FWL.

Meridian Oil Inc. will operate and drill this well as the Rosa Unit #296 at 1230'FNL, 680'FWL of Section 12, T-31-N, R-4-W.

Meridian Oil did not move the stake, but revised the footages as a result of resurveying the location. Meridian Oil has obtained an amended NSL for a vertical hole - NSL 2909.

Attached for your review: C-102, Operations Plan, BOP Diagrams and Facilities Diagram.

Operator Change from Evergreen to Meridian Oil

14. I hereby certify that the foregoing is true and correct

Signed Deputy State Engineer Title Regulatory Affairs Date 11-12-90

(This space for Federal or State office use)

APPROVED BY _____ TITLE _____
CONDITION OF APPROVAL, IF ANY:

APPROVED

NOV 30 1990

AREA MANAGER

NMCO

Submit to Assessor
District Office
State Lease - 4 copies
Fee Lease - 3 copies

State of New Mexico
Energy, Minerals and Natural Resources Department

Form C-102
Revised 1-1-89

OIL CONSERVATION DIVISION
P.O. Box 2088
Santa Fe, New Mexico 87504-2088

DISTRICT I
P.O. Box 1980, Hobbs, NM 88240

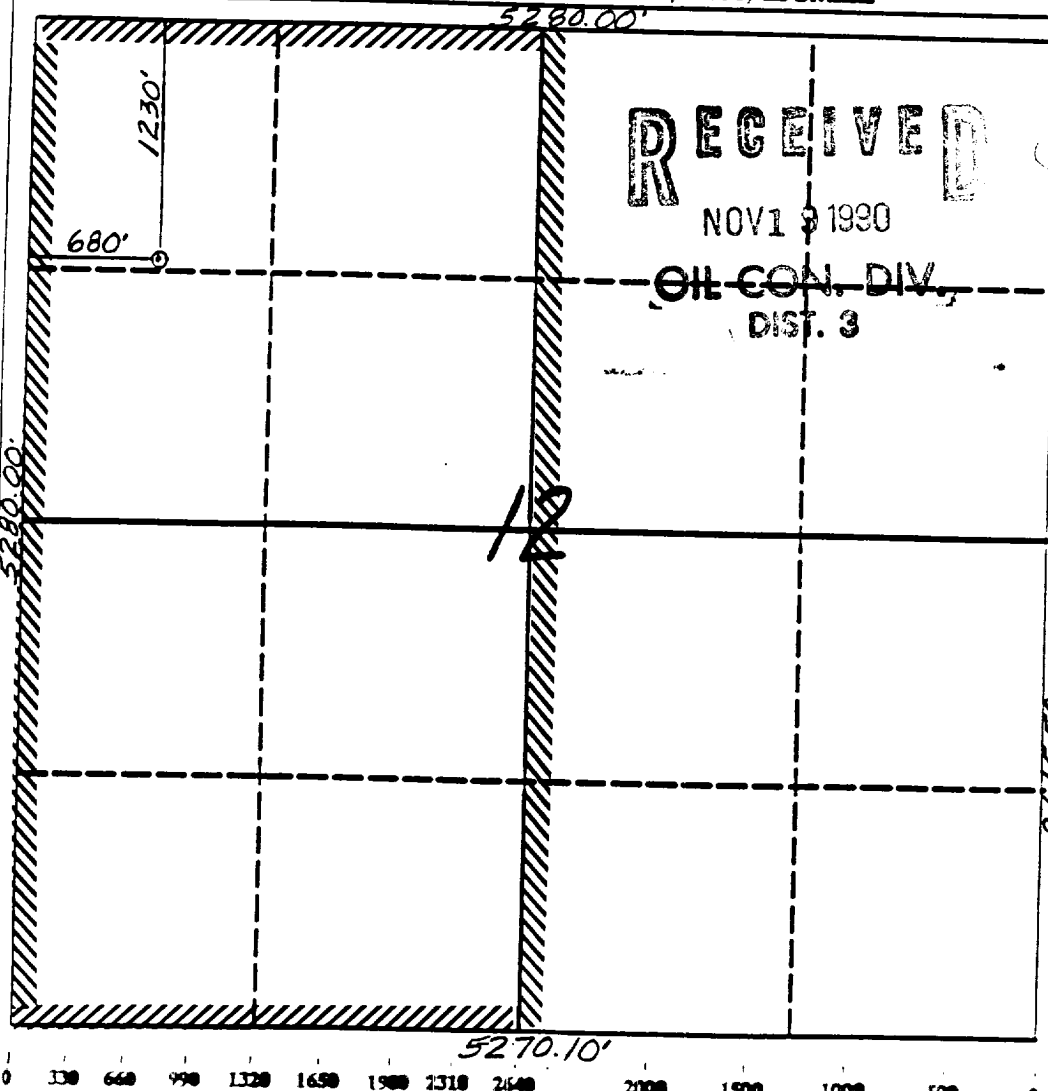
DISTRICT V
P.O. Drawer 100, Artesa, NM 88210

DISTRICT III
1000 Rio Brazos Rd., Aztec, NM 87410

WELL LOCATION AND ACREAGE DEDICATION PLAT
All Distances must be from the outer boundaries of the section

Operator Meridian Oil Inc.			Lease Rosa Unit		Well No. 296
Unit Letter D	Section 12	Township 31 North	Range 4 West	County Rio Arriba	
Actual Footage Location of Well: 1230 feet from the North line and 680 feet from the West line					
Ground level Elev. 7001'		Producing Formation Fruitland Coal Basin		Dedicated Acreage: 320 Acres	

- Outline the acreage dedicated to the subject well by corner point or boundary marks on the plat below.
- If more than one lease is dedicated to the well, outline each and identify the ownership thereof (both as to working interest and royalty).
- If more than one lease of different ownership is dedicated to the well, have the interest of all owners been consolidated by commutation, unitization, force-pooling, etc.?
☒ Yes ☐ No If answer is "yes" type of consolidation unitization
If answer is "no" list the owners and tract descriptions which have actually been consolidated. (Use reverse side of this form if necessary.)
No allotments will be assigned to the well until all interests have been consolidated (by commutation, unitization, force-pooling, or otherwise) or until a non-standard unit, eliminating such interest, has been approved by the Division.



OPERATOR CERTIFICATION

I hereby certify that the information contained herein is true and complete to the best of my knowledge and belief.

Signature Peggy Bradfield

Printed Name Peggy Bradfield

Position Regulatory Affairs

Company Meridian Oil Inc.

Date 11-17-90

SURVEYOR CERTIFICATION

I hereby certify that the well location shown on this plat was plotted from field notes actual surveys made by me or under supervision, and that the same is true to the best of my knowledge and belief.

Date Surveyed 10-10-90

Signature of Surveyor [Signature]

Professional Seal [Seal]

Professional Seal [Seal]

Professional Seal [Seal]

Professional Seal [Seal]

Professional Seal [Seal]

Professional Seal [Seal]

Professional Seal [Seal]

Well Name: 296 ROSA UNIT
 Sec. 12 T31N R04W
 BASIN FRUITLAND COAL

1230'FNL, 680'FWL
 RIO ARRIBA NEW MEXICO
 Elevation 7001'GL

Formation tops: Surface- SAN JOSE

Ojo Alamo- 3365

Kirtland- 3490

Fruitland- 3820

Fruitland Coal Top- 3897

Fruitland Coal Base- 3949

Pictured Cliffs- 3954

Intermediate TD- 3877

Total Depth- 3951

Logging Program: Mud logs from intermediate to total depth.

Mud Program:	Interval	Type	Weight	Visc.	Fl. Loss
	0 - 200	Spud	8.4 - 8.9	40-50	no contr.
	200 - 3877	Non-dispersed	8.4 - 9.1	30-60	no contr.
	3877 - 3951	Formation Water	8.4		no contr.

Casing Program:	Hole Size	Depth Interval	Csg. Size	Weight	Grade
	12 1/4"	0 - 200	9 5/8"	32.3#	H-40
	8 3/4"	0 - 3877	7"	20.0#	K-55
	6 1/4"	3827 - 3951	5 1/2"	15.5#	K-55
Tubing Program:		0 - 3951	2 7/8"	6.5#	J-55

Float Equipment: 9 5/8" surface casing - saw tooth guide shoe. Centralizers will be run in accordance with Onshore Order #2.

7" intermediate casing - guide shoe and self-fill insert float valve. Three centralizers run every other joint above shoe. Run insert float one joint above the guide shoe. Two turbolizing type centralizers - one below and one into the base of the Ojo Alamo @ 3490'. Standard centralizers thereafter every fourth joint up to the base of the surface pipe.

5 1/2" production casing - float shoe on bottom and a pre-drilled liner run to the 7" casing with a minimum 50' overlap. Liner hanger is a double slip grip type.

Wellhead Equipment: 9 5/8" x 7" x 2 7/8" x 11" 3000 psi xmas tree assembly.

Cementing:

9 5/8" surface casing - cement with 160 sacks of class "B" cement with 1/4# flocele/sack and 3% calcium chloride (189 cu ft. of slurry, 200% excess to circulate to surface). WOC 12 hours. Test casing to 600 psi for 30 minutes.

7" intermediate casing - lead with 578 sacks of 65/35 class "B" poz with 6% gel, 2% calcium chloride and 1/2 cu ft. Perlite/sack (10.3 gallons of water/sack) tail with 100 sacks of class "B" with 2% calcium chloride. 1234 cu ft. of slurry, 110% excess to circulate to surface. If hole conditions permit, a 600 ft spacer will be run ahead of the cement slurry to avoid mud contamination of the cement. WOC 12 hours. If cement does not circulate to surface, a temperature log will be run after 8 hours to determine TOC.

5 1/2" liner - do not cement.

BOP and Tests:

Surface to intermediate TD - 11" 2000 psi(minimum) double gate BOP stack (Reference Figure #1). Prior to drilling out surface casing, test rams to 600 psi for 30 minutes.

Intermediate TD to TD - 7 1/16" 2000 psi(minimum) double gate BOP stack (Reference Figure #2). Prior to drilling out intermediate casing, test blind rams and casing to 2500 psi for 30 minutes; all pipe rams and casing to 2500 psi for 30 minutes each.

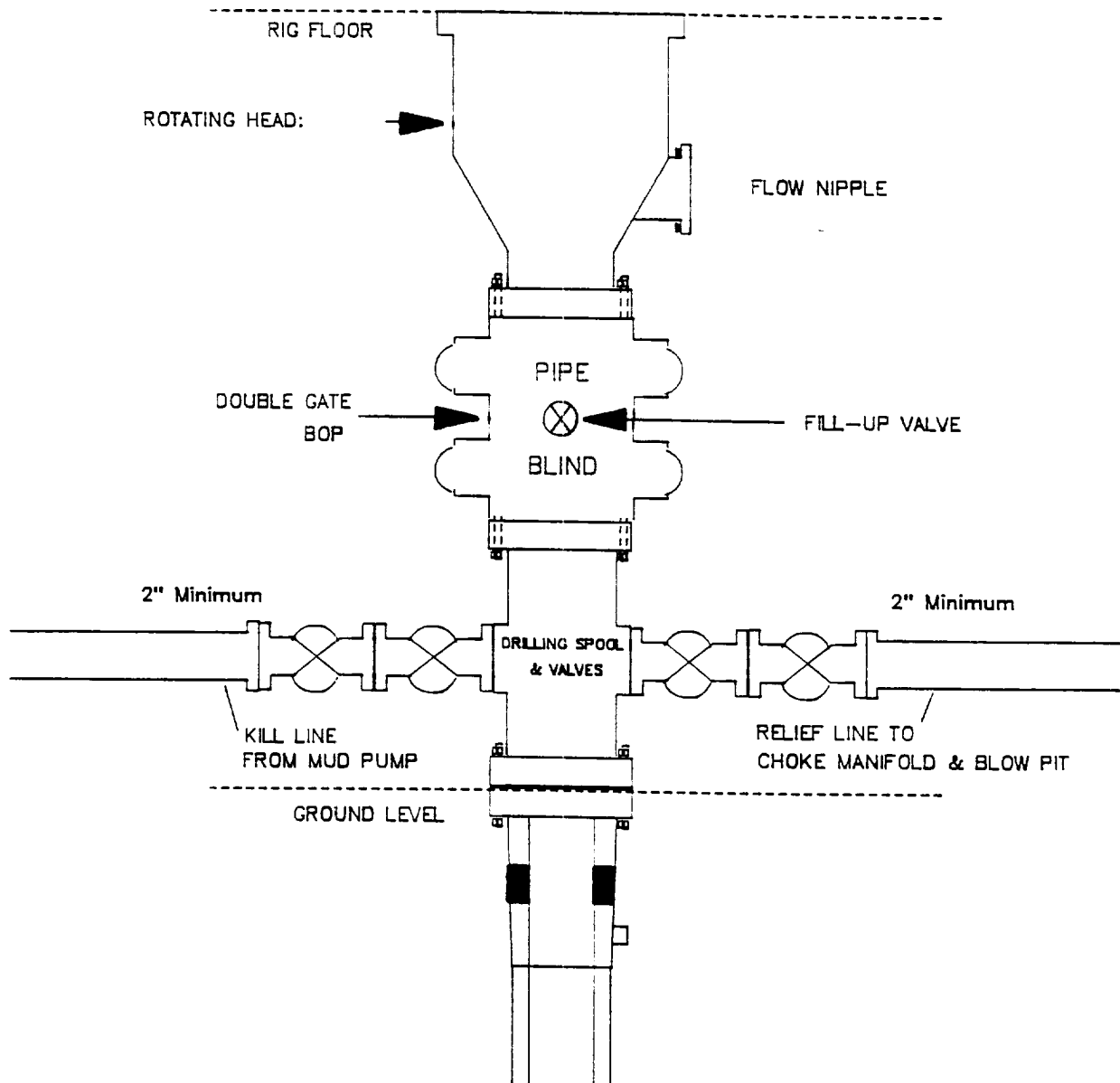
From surface to TD - choke manifold (Reference Figure #3).

Pipe rams will be actuated at least once each day and blind rams actuated once each trip to test proper functioning. An upper kelly cock valve with handle and drill string safety valves to fit each drill string will be maintained and available on the rig floor.

Additional Information:

- * The Fruitland coal formation will be completed.
- * Anticipated Fruitland pore pressure is 1228 psi.
- * This gas is dedicated.
- * The W/2 of Section 12 is dedicated to this well.
- * New casing will be utilized.
- * Cementing Contractor will provide the BLM with a chronological log including the pump rate and pressure, and the slurry density and volume for all cement jobs.
- * Pipe movement (either rotation or reciprocation) will be done if hole conditions permit.

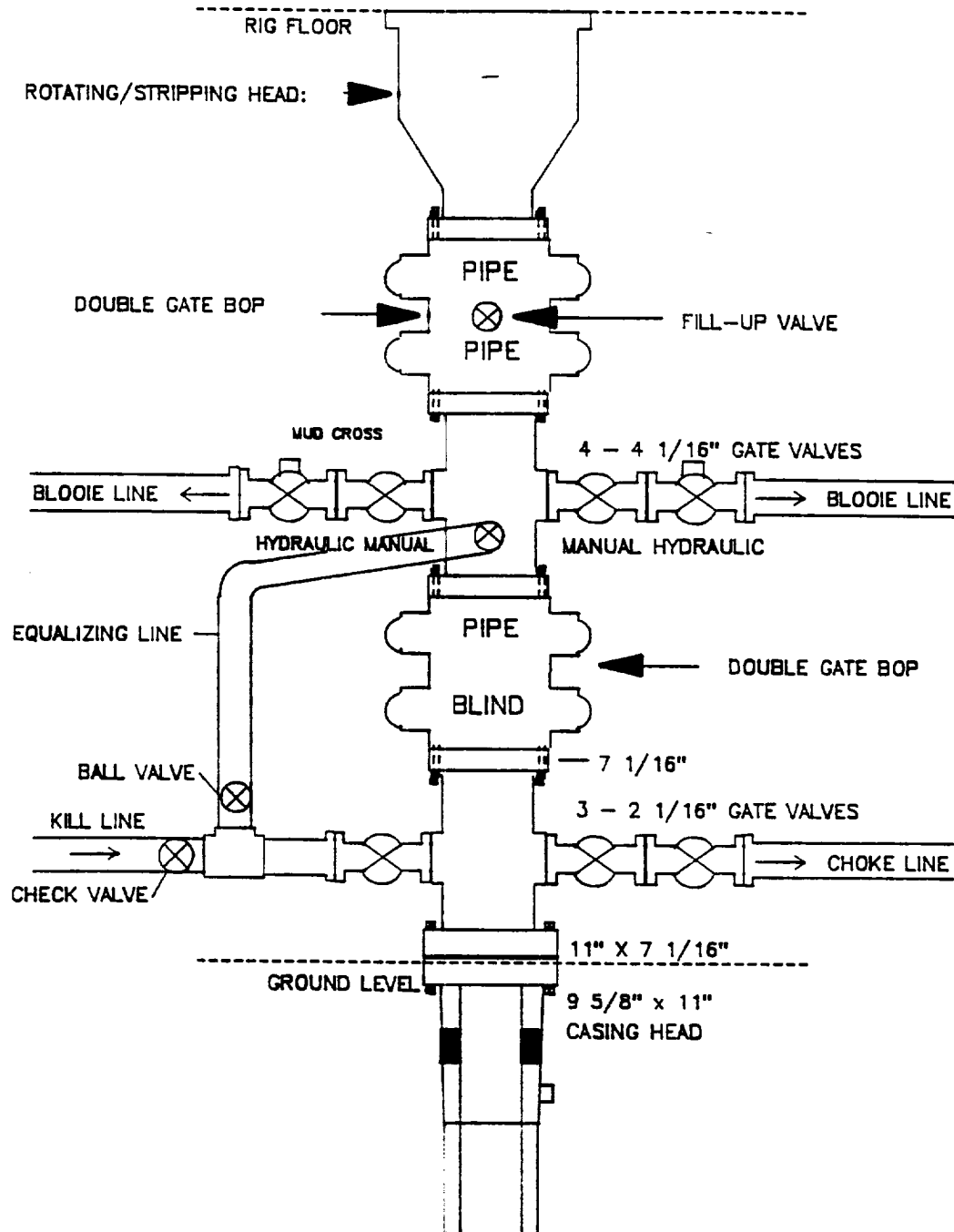
MERIDIAN OIL INC.
Drilling Rig
BOP Configuration



Minimum BOP installation for a typical Fruitland Coal well from surface to Intermediate casing point. 11" Bore (10" Nominal), 2000psi minimum working pressure double gate BOP to be equipped with blind and pipe rams. A Schaffer Type 50 equivalent rotating head to be installed on the top of BOP. All equipment is 2000psi working pressure/or greater.

Figure #1

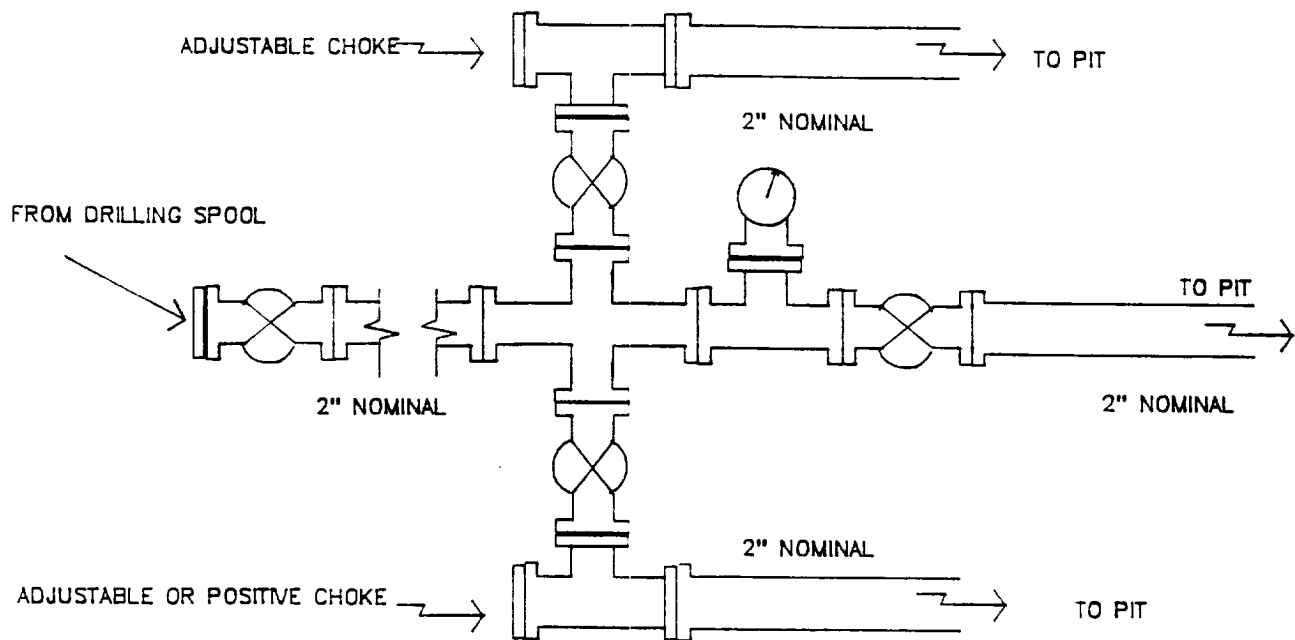
MERIDIAN OIL INC.
Completion Rig
BOP Configuration



Minimum BOP installation for a typical open-hole Fruitland Coal well from intermediate TD to TD. 7 1/16" Bore (6" Nominal), 2000psi working pressure/ or greater double stack double gate BOP equipped with three pipe and one blind ram.

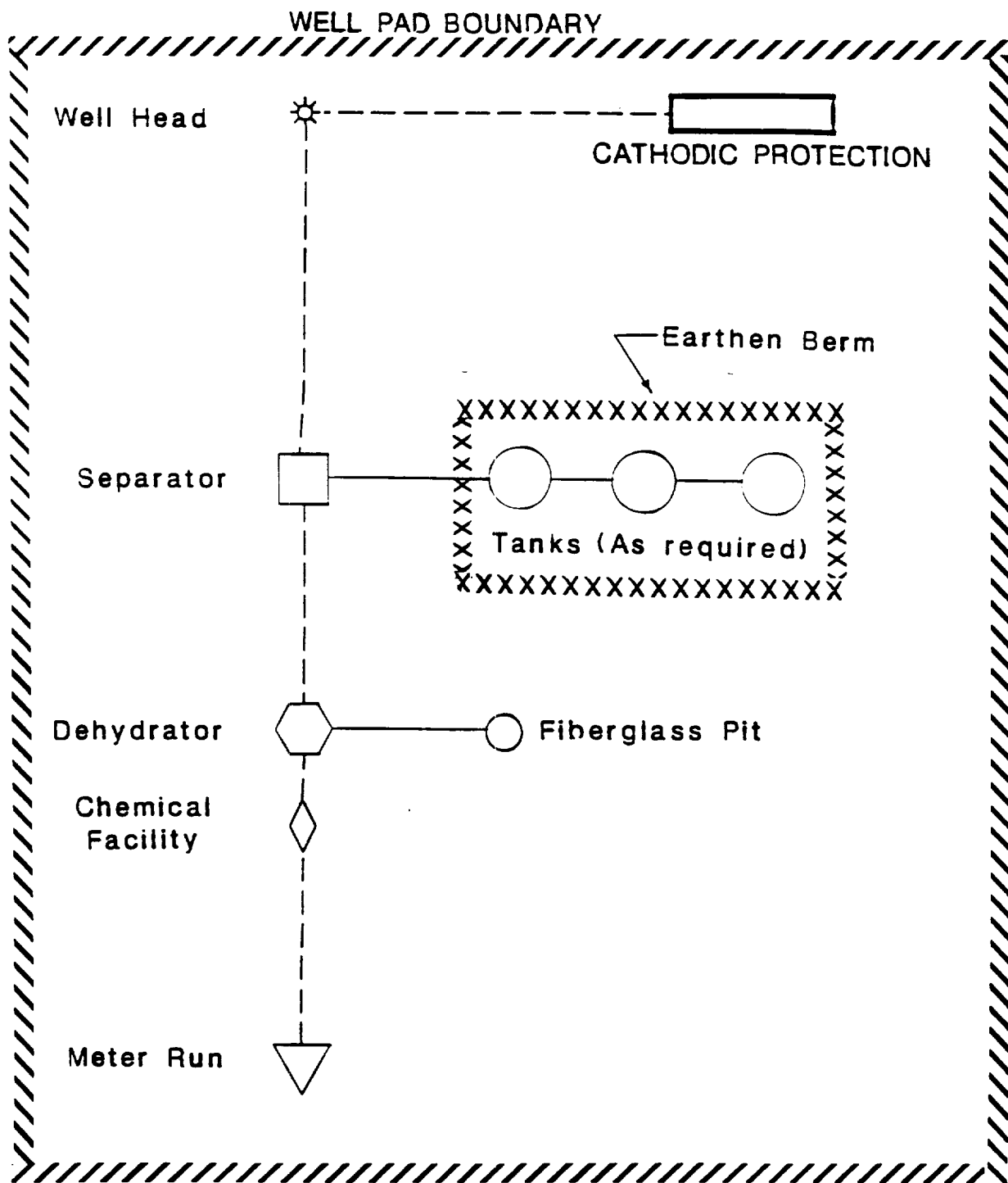
Figure #2

MERIDIAN OIL INC.
Typical Fruitland Coal Well
Choke Manifold Configuration



Minimum choke manifold installation for a typical Fruitland Coal well from surface to Total Depth. 2", 2000psi working pressure equipment with two chokes.

Figure #3



PLAT #1

MERIDIAN OIL
 ANTICIPATED
 PRODUCTION FACILITIES
 FOR A
 FRUITLAND WELL