

UNITED STATES  
DEPARTMENT OF THE INTERIOR

BUREAU OF LAND MANAGEMENT *2-639-25136*

APPLICATION FOR PERMIT TO DRILL, DEEPEN, OR PLUG BACK

1a. TYPE OF WORK

DRILL ☒

DEEPEN ☐

PLUG BACK ☐

b. TYPE OF WELL

OIL  
WELL ☐

GAS  
WELL ☒

OTHER

SINGLE  
ZONE ☒

MULTIPLE  
ZONE ☐

2. NAME OF OPERATOR

Phillips Petroleum Company

3. ADDRESS OF OPERATOR

5525 Hwy 64 NBU 3004, Farmington, NM 87401

4. LOCATION OF WELL (Report location clearly and in accordance with any State requirements.)\*

At surface Unit I, 1484' FSL & 836' FEL

At proposed prod. zone Same as above

14. DISTANCE IN MILES AND DIRECTION FROM NEAREST TOWN OR POST OFFICE\*

25 Miles East From Blanco

15. DISTANCE FROM PROPOSED\*

LOCATION TO NEAREST  
PROPERTY OR LEASE LINE, FT.  
(Also to nearest drlg. unit line, if any)

18. DISTANCE FROM PROPOSED LOCATION\*

TO NEAREST WELL, DRILLING, COMPLETED,  
OR APPLIED FOR, ON THIS LEASE, FT.

16. NO. OF ACRES IN LEASE

2560 Acres

19. PROPOSED DEPTH

8080'

17. NO. OF ACRES ASSIGNED  
TO THIS WELL

*E* 320 Acres

20. ROTARY OR CABLE TOOLS

Rotary

21. ELEVATIONS (Show whether DF, RT, GR, etc.) This section is subject to technical and

6441' (GL Unprepared)

procedural review pursuant to 43 CFR 1185.3  
and appeal pursuant to 43 CFR 3185.4.

22. APPROX. DATE WORK WILL START\*

Upon Approval

23. PROPOSED CASING AND CEMENTING PROGRAM

SIZE OF HOLE	SIZE OF CASING	WEIGHT PER FOOT	SETTING DEPTH	QUANTITY OF CEMENT
12-1/4"	9-5/8"	36#, J-55	400'	220 Sx, Circ to Surface
8-3/4"	7"	23#, J-55	3850'	500 Sx, Circ to Surface
6-1/4"	4-1/2"	11.6#, N-80	8080'	470 Sx, First Stage
				350 Sx, Second Stage, Circ to Sur

RECEIVED  
OCT 29 1991  
OIL CON. DIV.  
DIST. 3

IN ABOVE SPACE DESCRIBE PROPOSED PROGRAM: If proposal is to deepen or plug back, give data on present productive zone and proposed new productive zone. If proposal is to drill or deepen directionally, give pertinent data on subsurface locations and measured and true vertical depths. Give blowout preventer program, if any.

24.

SIGNED

*L. E. Robinson*  
L. E. Robinson

TITLE

Sr. Drlg. & Prod. Engr.

DATE

9-11-91

(This space for Federal or State office use)

PERMIT NO.

APPROVAL DATE

APPROVED  
AS AMENDED

APPROVED BY

CONDITIONS OF APPROVAL, IF ANY:

TITLE

OCT 23 1991

AREA MANAGER

WOOD

\*See Instructions On Reverse Side

Submit to Appropriate  
District Office  
State Lease - 4 copies  
Fee Lease - 3 copies

State of New Mexico  
Energy, Minerals and Natural Resources Department

Form C-102  
Revised 1-1-89

OIL CONSERVATION DIVISION

P.O. Box 2088  
Santa Fe, New Mexico 87504-2088

DISTRICT I  
P.O. Box 1980, Hobbs, NM 88240

DISTRICT II  
P.O. Drawer DD, Artesia, NM 88210

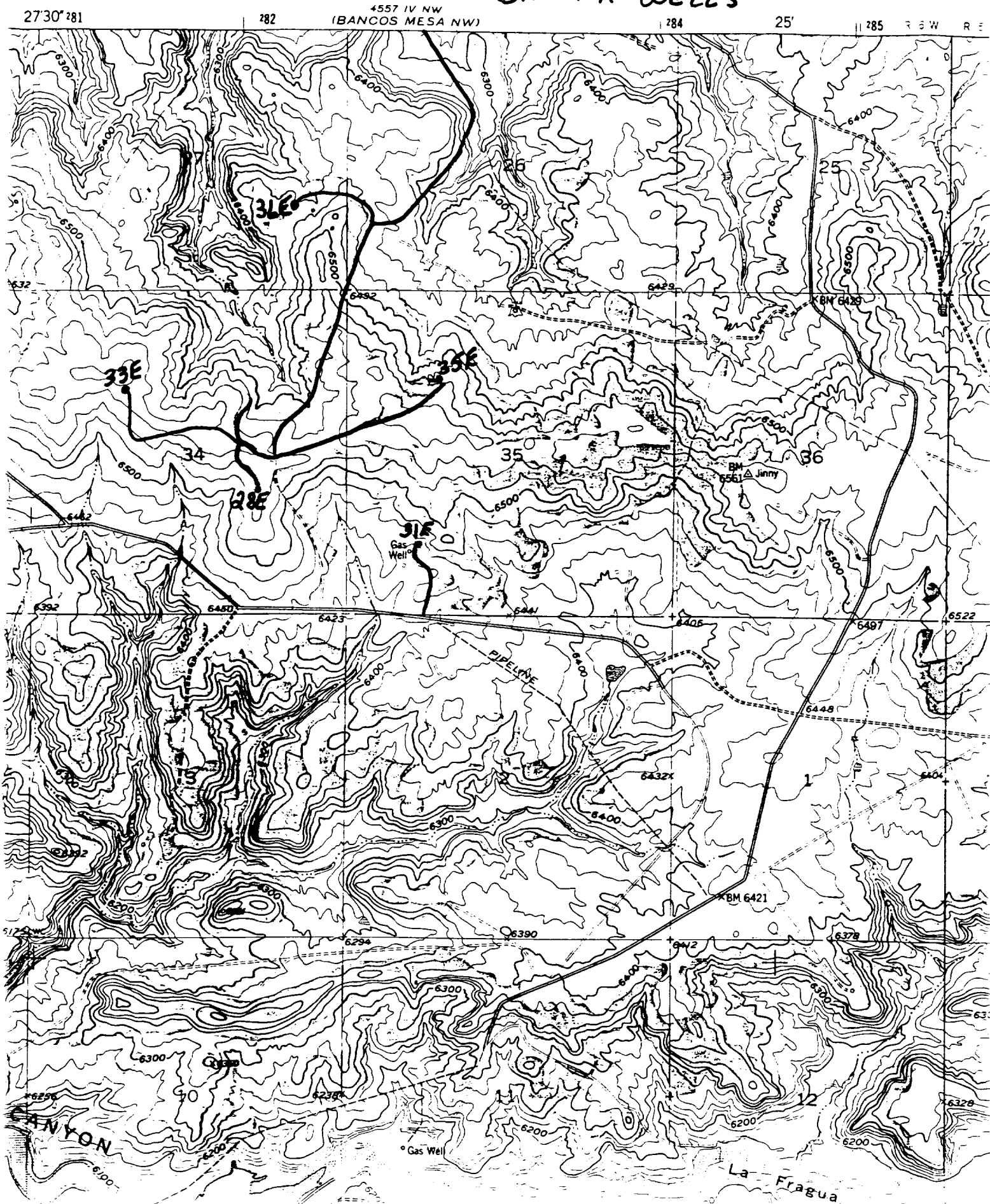
DISTRICT III  
1000 Rio Brazos Rd., Aztec, NM 87410

WELL LOCATION AND ACREAGE DEDICATION PLAT

All Distances must be from the outer boundaries of the section

Operator <b>PHILLIPS PETROLEUM</b>		Lease <b>SAN JUAN 31-6 UNIT</b>		Well No. <b>36E</b>
Unit Letter <b>1</b>	Section <b>27</b>	Township <b>T.31 N.</b>	Range <b>R.6 W.</b>	County <b>RIO ARriba COUNTY</b>
Actual Footage Location of Well: <b>1484</b> feet from the <b>SOUTH</b> line and <b>836</b> feet from the <b>EAST</b> line				
Ground level Elev. <b>6441</b>	Producing Formation <b>DAKOTA</b>	Pool <b>BASIN DAKOTA</b>		Dedicated Acreage: <b>320</b> Acres
<p>1. Outline the acreage dedicated to the subject well by colored pencil or hatchure marks on the plat below.</p> <p>2. If more than one lease is dedicated to the well, outline each and identify the ownership thereof (both as to working interest and royalty).</p> <p>3. If more than one lease of different ownership is dedicated to the well, have the interest of all owners been consolidated by communization, unitization, force-pooling, etc.?</p> <p><input checked="" type="checkbox"/> Yes <input type="checkbox"/> No If answer is "yes" type of consolidation <u>Unitization</u></p> <p>If answer is "no" list the owners and tract descriptions which have actually been consolidated. (Use reverse side of this form if necessary.)</p> <p>No allowable will be assigned to the well until all interests have been consolidated (by communization, unitization, forced-pooling, or otherwise) or until a non-staked unit, eliminating such interest, has been approved by the Division.</p>				
			<b>OPERATOR CERTIFICATION</b> I hereby certify that the information contained herein is true and complete to the best of my knowledge and belief.	
			Signature <i>L. E. Robinson</i> Printed Name <b>L. E. Robinson</b> Position <b>Sr. Drlg. &amp; Prod. Engr.</b> Company <b>Phillips Petroleum Co.</b> Date <b>9-11-91</b>	
			<b>SURVEYOR CERTIFICATION</b> I hereby certify that the well location shown on this plat was plotted from field notes of actual surveys made by me or under my supervision, and that the same is true and correct to the best of my knowledge and belief.	
			Date Surveyed <b>JULY 25, 1991</b> Signature <i>H. H. Broadhurst, Jr.</i> Professional Surveyor <b>H. H. BROADHURST, JR.</b> New Mexico 11393 1138 PROFESSIONAL SURVEYOR	

# SAN JUAN 31-6 UNIT DAKOTA WELLS



4557 IV NW  
(BANCOS MESA NW)

282

4557 IV NW  
(BANCOS MESA NW)

284

25

285

5 W

17

