

UNITED STATES
DEPARTMENT OF THE INTERIOR
BUREAU OF LAND MANAGEMENT

APPLICATION FOR PERMIT TO DRILL OR DEEPEN

1a. TYPE OF WORK
DRILL ☒ DEEPEN ☐

b. TYPE OF WELL
OIL WELL ☐ GAS WELL ☒ OTHER ☐ SINGLE ZONE ☐ MULTIPLE ZONE ☒

2. NAME OF OPERATOR
NORTHWEST PIPELINE CORPORATION OGRID 16189

3. ADDRESS AND TELEPHONE NO.
c/o Walsh Engr. & Prod. Corp.
7415 E. Main Farmington, N.M. 87402 505 327-4892

4. LOCATION OF WELL (Report location clearly and in accordance with any State requirements.)
At surface 1106'FSL & 791'FEL
At proposed prod. zone Same

14. DISTANCE IN MILES AND DIRECTION FROM NEAREST TOWN OR POST OFFICE*
25 miles NE of Blanco, N.M.

15. DISTANCE FROM PROPOSED*
LOCATION TO NEAREST
PROPERTY OR LEASE LINE, FT.
(Also to nearest drlg. unit line, if any) 791'

16. NO. OF ACRES IN LEASE
2552.71

17. NO. OF ACRES ASSIGNED
TO THIS WELL 160 PC
320 MV

18. DISTANCE FROM PROPOSED LOCATION*
TO NEAREST WELL, DRILLING, COMPLETED,
OR APPLIED FOR, ON THIS LEASE, FT. 400'

19. PROPOSED DEPTH
5955'

20. ROTARY OR CABLE TOOLS
Rotary

21. ELEVATIONS (Show whether DF, RT, GR) ~~This action is subject to technical and procedural review pursuant to 43 CFR 3160.3 and appeal pursuant to 43 CFR 3160.4~~
6303'GR

22. APPROX. DATE WORK WILL START*
June 1, 1994

23. ~~DRILLING OPERATIONS AUTHORIZED ARE~~
PROPOSED CASING AND CEMENTING PROGRAM ~~SUBJECT TO COMPLIANCE WITH ATTACHED~~

5. LEASE DESIGNATION AND SERIAL NO.
SF-078766

6. IF INDIAN, ALLOTTEE OR TRIBE NAME

7. UNIT AGREEMENT NAME
Rosa Unit 008480

8. FARM OR LEASE NAME, WELL NO.
#18A

9. AP WELL NO.

10. FIELD AND POOL, OR WILDCAT
WILDCAT: ROSA, PC 96175
BLANCO MESA VERDE 72319

11. SEC., T., R., M., OR BLK.
AND SURVEY OR AREA
P Sec. 22, T31N, R6W

12. COUNTY OR PARISH
Rio Arriba

13. STATE
N.M.

22. APPROX. DATE WORK WILL START*
June 1, 1994

QUANTITY OF CEMENT
315 cuft C1 "B" w/2% CaCl2
746 cuft 65/35 Poz & 204 cuft C1B
407 cuft C1 "B" w/4% Gel and additives

NORTHWEST PIPELINE proposes to drill a vertical well to develop the Pictured Cliffs and Mesa Verde formations at the above described site in accordance with the attached drilling and surface use programs.

This location has been archaeologically surveyed by CRMC. Copies of the report will be submitted directly to your office.

This APD also is serving as an application to obtain BLM road right-of-way. The right-of-way will be an existing road which crosses the SE/SE of Section 22; the SW/SW, SE/SW, NE/SW and NW/SE of Section 23 where it connects with the Main Rosa Road. The Rosa Road continues SW for approximately 8 miles where it connects to N.M. Highway 527 (Sims Mesa Highway).

IN ABOVE SPACE DESCRIBE PROPOSED PROGRAM: If proposal is to deepen, give data on present productive zone and proposed new productive zone. If proposal is to drill or deepen directionally, give pertinent data on subsurface locations and measured and true vertical depths. Give blowout preventer program, if any.

24. SIGNED Paul C. Thompson TITLE Paul C. Thompson, Agent DATE 5/12/94

(This space for Federal or State office use)

PERMIT NO. _____

Application approval does not warrant or certify that the applicant holds legal or equitable title to the right in the subsurface which would entitle the applicant to conduct operations thereon.

CONDITIONS OF APPROVAL, IF ANY:

APPROVED BY APG

TITLE _____

*See Instructions On Reverse Side

District I
PO Box 1980, Hobbs, NM 88241-1980
District II
PO Drawer DD, Artesia, NM 86211-0719
District III
1000 Rio Brazos Rd., Aztec, NM 87410
District IV
PO Box 2088, Santa Fe, NM 87504-2088

State of New Mexico
Energy, Minerals & Natural Resources Department

OIL CONSERVATION DIVISION
PO Box 2088
Santa Fe, NM 87504-2088

Form C-102
Revised February 10, 1994
Instructions on back
Submit to Appropriate District Office
State Lease - 4 Copies
Fee Lease - 3 Copies

☐ AMENDED REPORT

WELL LOCATION AND ACREAGE DEDICATION PLAT

1 API Number <u>30-039-25436</u>		2 Pool Code 96175		3 Pool Name WILDCAT: ROSA - PICTURED CLIFF		
4 Property Code 008480		5 Property Name ROSA UNIT			6 Well Number # 018A	
7 OGRID No. 16189		8 Operator Name NORTHWEST PIPELINE CORPORATION			9 Elevation 6303	

10 Surface Location

UL or lot no. P	Section 22	Township 31N	Range 6W	Lot Idn	Feet from the 1106'	North/South line FSL	Feet from the 791'	East/West line FEL	County RIO ARriba
--------------------	---------------	-----------------	-------------	---------	------------------------	-------------------------	-----------------------	-----------------------	----------------------

11 Bottom Hole Location If Different From Surface

UL or lot no.	Section	Township	Range	Lot Idn	Feet from the	North/South line	Feet from the	East/West line	County
---------------	---------	----------	-------	---------	---------------	------------------	---------------	----------------	--------

12 Dedicated Acres 160	13 Joint or Infill Y	14 Consolidation Code U	15 Order No.
---------------------------	-------------------------	----------------------------	--------------

NO ALLOWABLE WILL BE ASSIGNED TO THIS COMPLETION UNTIL ALL INTERESTS HAVE BEEN CONSOLIDATED
OR A NON-STANDARD UNIT HAS BEEN APPROVED BY THE DIVISION

16				17 OPERATOR CERTIFICATION I hereby certify that the information contained herein is true and complete to the best of my knowledge and belief. <u>Paul C. Thompson</u> Signature Paul C. Thompson, P.E. Printed Name Agent Title 5/12/94 Date
				18 SURVEYOR CERTIFICATION I hereby certify that the well location shown on this plat was plotted from field notes of actual surveys made by me or under my supervision, and that the same is true and correct to the best of my belief. MAY 4, 1994 Date of Survey Signature and Seal of Professional Surveyor: <u>Jerry Lemon Jeffries</u> 8336 Certificate Number

District I
PO Box 1080, Hobbs, NM 88241-1980

District II
PO Drawer DD, Artesia, NM 88211-0719

District III
1000 Rio Brazos Rd., Aztec, NM 87410

District IV
PO Box 2088, Santa Fe, NM 87504-2088

State of New Mexico
Energy, Minerals & Natural Resources Department

OIL CONSERVATION DIVISION
PO Box 2088
Santa Fe, NM 87504-2088

Form C-102
Revised February 10, 1994
Instructions on back
Submit to Appropriate District Office
State Lease - 4 Copies
Fee Lease - 3 Copies

☐ AMENDED REPORT

WELL LOCATION AND ACREAGE DEDICATION PLAT

1 API Number <u>30-039-25436</u>		2 Pool Code 72319		3 Pool Name BLANCO/MESA VERDE		
4 Property Code 008480		5 Property Name ROSA UNIT			6 Well Number # 018A	
7 OGRID No. 16189		8 Operator Name NORTHWEST PIPELINE CORPORATION			9 Elevation 6303	

10 Surface Location

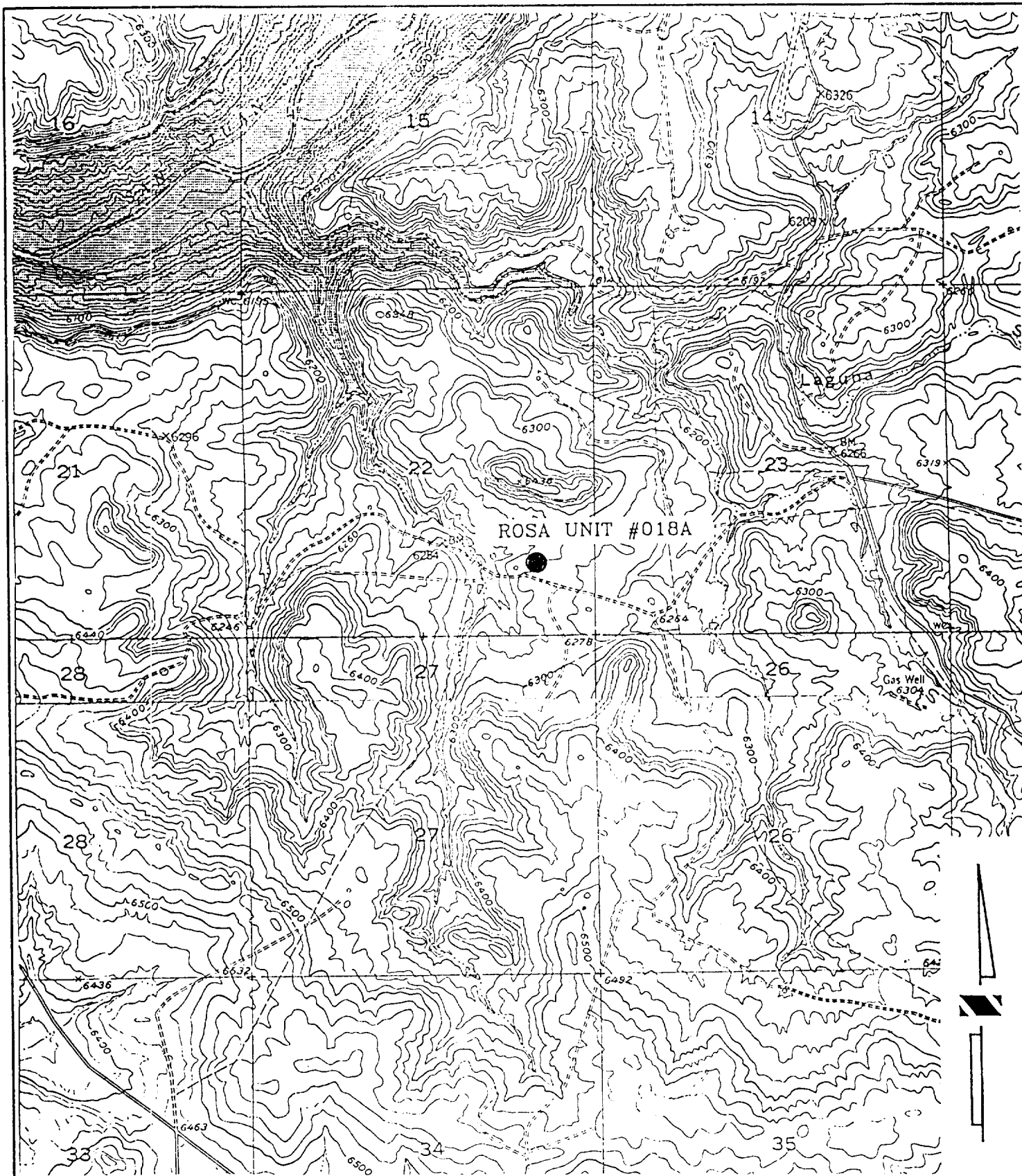
UL or lot no. P	Section 22	Township 31N	Range 6W	Lot Idn	Feet from the 1106'	North/South line ECL	Feet from the 791'	East/West line FEL	County RIO ARRIBA
--------------------	---------------	-----------------	-------------	---------	------------------------	-------------------------	-----------------------	-----------------------	----------------------

11 Bottom Hole Location If Different From Surface

UL or lot no.	Section	Township	Range	Lot Idn	Feet from the	North/South line	Feet from the	East/West line	County
12 Dedicated Acres 320		13 Joint or Infill Y		14 Consolidation Code U		15 Order No.			

NO ALLOWABLE WILL BE ASSIGNED TO THIS COMPLETION UNTIL ALL INTERESTS HAVE BEEN CONSOLIDATED
OR A NON-STANDARD UNIT HAS BEEN APPROVED BY THE DIVISION

16				17 OPERATOR CERTIFICATION I hereby certify that the information contained herein is true and complete to the best of my knowledge and belief.			
SEC. 22				Signature <u>Paul C. Thompson</u>			
				Printed Name Paul C. Thompson, P.E.			
				Title Agent			
				Date 5/12/94			
				18 SURVEYOR CERTIFICATION I hereby certify that the well location shown on this plat was plotted from field notes of actual surveys made by me or under my supervision, and that the same is true and correct to the best of my belief.			
				MAY 4, 1994			
				Date of Survey			
				Signature and Seal of Professional Surveyor:			
				8336			
				Certificate Number			



ROSA UNIT #018A NORTHWEST PIPELINE CORPORATION
 1106' FSL, 791' FEL, SEC. 22, T.31 N., R.6 W. N.M.P.M.
 RIO ARriba COUNTY, NEW MEXICO
 BANCOS MESA NW
 ELEV.= 6303