

In Lieu of
Form 3160-4
(July 1992)

UNITED STATES
DEPARTMENT OF THE INTERIOR
BUREAU OF LAND MANAGEMENT

SUBMIT IN
DUPLICATE

(See other instructions on
reverse side)

FORM APPROVED
OMB NO. 1004-0137
Expires February 28, 1995

WELL COMPLETION OR RECOMPLETION REPORT AND LOG* 05

5. LEASE DESIGNATION AND LEASE NO. SF-078769

6. IF INDIAN, ALLOTTEE OR

7. UNIT AGREEMENT NAME
ROSA UNIT

8. FARM OR LEASE NAME, WELL NO.
ROSA UNIT #31

9. API WELL NO.
30-039-26279

10. FIELD AND POOL, OR WILDCAT
BLANCO MV

11. SEC., T., R., M., OR BLOCK AND SURVEY OR AREA
NE/4 NW/4 SEC 17-31N-5W

12. COUNTY OR
RIO ARRIBA

13. STATE
NEW MEXICO

14. PERMIT NO.

DATE ISSUED

15. DATE SPUNDED
06/19/2000

16. DATE T.D. REACHED
06/28/2000

17. DATE COMPLETED (READY TO PRODUCE)
07/28/2000

18. ELEVATIONS (DK, RKB, RT, GR, ETC.)*
6201' GR

19. ELEVATION CASINGHEAD

20. TOTAL DEPTH, MD & TVD
5973' MD

21. PLUG, BACK T.D., MD & TVD
5948' MD

22. IF MULTICOMP., HOW MANY

23. INTERVALS DRILLED BY

ROTARY TOOLS
X

CABLE TOOLS

24. PRODUCING INTERVAL(S), OF THIS COMPLETION - TOP, BOTTOM, NAME (MD AND TVD)*
BLANCO MV 5050' - 5860'

25. WAS DIRECTIONAL SURVEY MADE
YES

26. TYPE ELECTRIC AND OTHER LOGS RUN
IND/GR & DEN/NEU/TEMP

27. WAS WELL CORED
NO

28. CASING REPORT (Report all strings set in well)						
CASING SIZE/GRADE	WEIGHT, LB./FT	DEPTH SET (MD)	HOLE SIZE	TOP OF CEMENT, CEMENTING RECORD	AMOUNT PULLED	
9-5/8" K-55	36#	291'	12-1/4"	130 SX - SURFACE		
7" K-55	20#	3532'	8-3/4"	565 SX - SURFACE		

29. LINER RECORD				30. TUBING RECORD			
SIZE	TOP (MD)	BOTTOM (MD)	SACKS CEMENT*	SCREEN (MD)	SIZE	DEPTH SET (MD)	PACKER SET (MD)
4-1/2"	3393'	5973'	280 SX		2-3/8"	5864'	

31. PERFORATION RECORD (Interval, size, and number)		32. ACID, SHOT, FRACTURE, CEMENT SQUEEZE, ETC.	
DEPTH INTERVAL (MD)		DEPTH INTERVAL (MD)	AMOUNT AND KIND OF MATERIAL USED
5050', 65', 522.5', 37', 76', 5304', 08', 10', 16', 18', 20', 25', 5327', 30', 32', 35', 38', 66', 72', 89', 93', 97', 5402', 05', 27', 58' and 61'. Total of 27 (0.38") holes		5050'- 5461'	80,000# 20/40 Sand in 1922 BBls slick water
Point Lookout: 5529', 33', 36', 40', 42', 44', 50', 56', 60', 62', 64', 70', 72', 75', 77', 5600', 04', 06', 11', 14', 33', 37', 41', 43', 57', 5747', 56', 83', 85', 5801', 05' and 60'. Total of 32 (0.38") holes		5529'- 5860'	80,000# 20/40 Sand in 1933 BBls slick water

33. PRODUCTION							
DATE OF FIRST PRODUCTION		PRODUCTION METHOD (Flowing, gas lift, pumping-size and type of pump) Flowing				WELL STATUS (PRODUCING OR SI) SI waiting on pipeline	
DATE OF TEST	TESTED	CHOKE SIZE	PROD N FOR TEST PERIOD	OIL - BBL	GAS - MCF	WATER - BBL	GAS-OIL RATIO
8/02/00	3 hr	3/4"			380		
FLOW TBG PRESS	CASING PRESSURE	CALCULATED 24-HOUR RATE		OIL - BBL	GAS - MCF	WATER - BBL	OIL GRAVITY-API (CORR.)
230	885				3,041		

34. DISPOSITION OF GAS (Sold, used for fuel, vented, etc.): TO BE SOLD TEST WITNESSED BY: CHIK CHARLEY

35. LIST OF ATTACHMENTS: SUMMARY OF POROUS ZONES, WELLBORE DIAGRAM

36. I hereby certify that the foregoing and attached information is complete and correct as determined from all available records

ACCEPTED FOR RECORD

SIGNED Nancy Bob TITLE Production Analyst DATE August 9, 2000

SEP 15 2000

FARMINGTON FIELD OFFICE
BY [Signature]

38. GEOLOGIC MARKERS

37. SUMMARY OF POROUS ZONES: (Show all important zones of porosity and exhibits thereof; cased intervals, and all drill stem tests, including depth interval tested, cushion used, time tool open, flowing and shut-in pressures, and recoveries).

FORMATION	TOP	BOTTOM	DESCRIPTION, CONTENTS, ETC.	NAME	TOP	
					NAME	TRUE VERTICAL DEPTH
FRUITLAND	2810'	3080'				
PICTURED CLIFFS	3080'	3424'				
LEWIS	3424'	5300'				
CLIFF HOUSE	5300'	5339'				
MENEREE	5339'	5526'				
POINT LOOKOUT	5526'					

ROSA UNIT #31
BLANCO MESAVERDE

Spud date : 6/19/00

Completed: 7/28/00

Location:

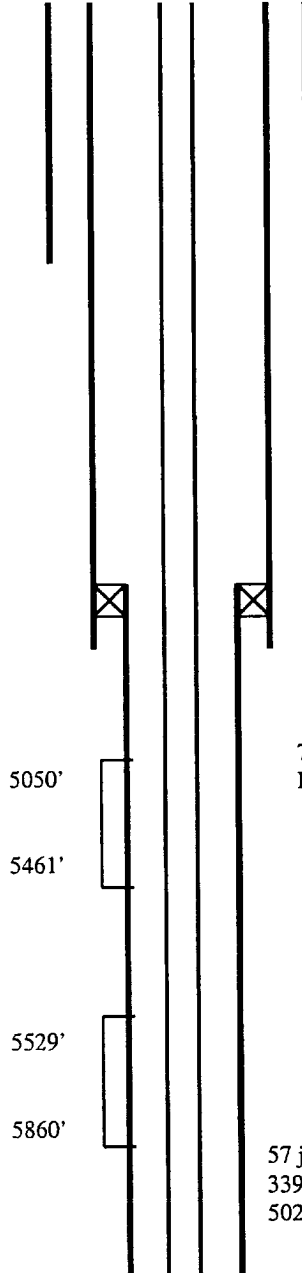
1080' FNL and 1795' FWL
NE/4 NW/4 Sec 17(C), T31N R05W
Rio Arriba, New Mexico
Elevation: 6201' GR

<u>Top</u>	<u>Depth</u>
Pictured Cliffs	3080'
Lewis	3424'
CliffHouse	5300'
Menefee	5339'
Point Lookout	5526'

STIMULATION

CliffHouse/Menefee: 5050' - 5461'
(27, 0.38" hole:) Frac with 80,000#
20/40 sand in 1922 bbls slick water.

Point Lookout: 5529' - 5860' (32,
0.38" holes) Frac with 80,000# 20/40
sand in 1933 bbls slick water.



6 jts 9-5/8", 36#, K-55, ST&C csg. Landed @ 291'
Cemented with 130 sx cmt

4 1/2" X 7" TIW liner hanger.
TOL @ 3398'

75 jts 7", 20#, K-55, ST&C csg. Landed @ 3532'.
Float @ 3483'. Cemented with 565 sx cmt.

187 jts 2-3/8", 4.7#, J-55, EUE, 8rd tbg w/
1/2" mule shoe on bottom and SN 1 jt up.
Landed @ 5864'

57 jts 4-1/2", 10.5#, K-55 ST&C csg. Landed @
3398' - 5973'. Latch collar @ 5948' & marker jt @
5027'. Cemented with 280 sx cmt

TD @ 5973'
PBSD @ 5948'

Hole Size	Casing	Cement	Volume	Top Of CMT
12-1/4"	9-5/8", 36#	130 sx	180 cu. ft.	surface
8-3/4"	7", 20#	565 sx	1062 cu ft.	surface
6-1/4"	4-1/2", 10.5#	280 sx	407 cu. ft.	3398'