

UNITED STATES
DEPARTMENT OF THE INTERIOR
BUREAU OF LAND MANAGEMENT

ROW/APD

FORM APPROVED
Budget Bureau No 1004-0136
Expires: February 28, 1995

APPLICATION FOR PERMIT TO DRILL OR DEEPEN

1a. Type of Work

DRILL ☒DEEPEN ☐

b. Type of Well

Oil Well ☐ Gas Well ☒ Other ☐Single Well ☒Multiple Zone ☐

2. Name of Operator

Williams Production Company

3. Address and Telephone No

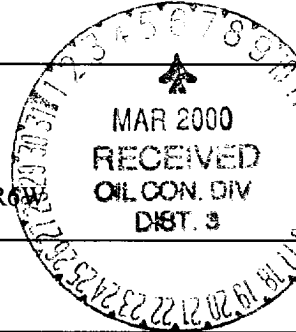
P.O. Box 3102, MS 37-2, Tulsa, OK. 74101

4. Location of Well (Footages)

At Surface

1225' FNL 695' FEL, NENE of Sec. 15, T31N, R6W

proposed prod. zone 898' FSL 845' FEL, SESE of Sec. 10, T31N, R6W

5. Lease Designation and Serial No.
SF-078765

6. If Indian, Allottee or Tribe Name

7. If Unit or CA, Agreement Designation
Rosa Unit8. Well Name and No.
RU-# 181A

9. API Well No.

30-139-26312

10. Field and Pool, or Exploratory Area
Blanco - MV11. Sec., T., R., M., or BLK.
and Survey or Area

Section 15, T31N, R6W

14. Distance in Miles and Directions from Nearest Town or Post Office

18.1 miles east Navajo Dam Post Office (straight line)

12. County or Parish
Rio Arriba13. State
NM

15. Distance from Proposed Location to Nearest

Property or Lease Line, Ft 695' and 1300'

16. No. of Acres in Lease

2460.23 acres

17. No. of Acres Assigned to This Well

320 acres E/2

18. Distance from Proposed Location to Nearest Well Drilling, Completed, or Applied for, on this Lease, FT

156'

19. Proposed Depth

6024' KB

20. Rotary or Cable Tools

Rotary

21. Elevations (Show whether DF, RT, GR, etc)

6267' GR

22. Approximate Date Work will Start

April 1, 2000

PROPOSED CASING AND CEMENTING PROGRAM

| SIZE OF HOLE | SIZE & GRADE OF CASING | WEIGHT PER FOOT | SETTING DEPTH | QUANTITY OF CEMENT |
|--------------|------------------------|-----------------|---------------|--|
| 12-1/4" | 9-5/8" | 36# | 500' | 255 sx-352 cu ft Type III |
| 8-3/4" | 7" | 20# | 4260' | 465 sx-976 cu ft Lite 220 sx-304 Cu ft-Type III |
| 6-1/4" | 4-1/2" | 10.5# | 4160' - 6839' | 80 sx-114-cuft 240 sx-353cuft Poz/Class H, 50/50 |

Williams Exploration & Production proposes to drill a directional well to develop the Mesa Verde Formation at the above described location, in accordance with the attached Operation and Surface Use plans. **The surface is under the jurisdiction of the Bureau of Reclamation.** The location has been surveyed for Cultural Resources by Moore Anthropological Research of Aztec, NM. The report has been submitted to your office for review.

This APD also is serving as an application to obtain BLM road and pipeline rights-of-way. This well will be twinned and accessed by the Rosa Unit Well # 12 access road (see plats #3 & #4). The proposed 156-foot long pipeline would tie into the Williams Gathering System on the Rosa Unit Well #12 (see the attached Plat Map # 4).

This well is subject to technical and procedural review pursuant to 43 CFR 3105.3 and appeal pursuant to 43 CFR 3105.4.

DRILLING OPERATIONS AUTHORIZED ARE
SUBJECT TO COMPLIANCE WITH ATTACHED
"GENERAL REQUIREMENTS"

If above facts are not proposed, give present productive zone and proposed new productive zone.

Signed

Steve Nelson

Title Agent

COPIES: BLM+4, WELL FILE+1
Date January 17, 2000

(This space for Federal or State office use)

Permit No

Approval Date

Application approval does not warrant or certify that applicant holds legal or equitable title to those rights in the subject lease which would entitle the applicant to conduct operations thereon.

Conditions of approval, if any:

NMOC

MAR 2 2000

APPROVED BY:

TITLE

DATE

District I
PO Box 1980, Hobbs, NM 88241-1980

State of New Mexico
Energy, Minerals & Natural Resources Department

Form C-102
Revised February 21, 1994

District II
PO Box 100, Artesia, NM 88211-0719

OIL CONSERVATION DIVISION
PO Box 2088
Santa Fe, NM 87504-2088

Instructions on back
Submit to Appropriate District Office
State Lease - 4 Copies
Fee Lease - 1 Copy

District III
PO Box 111, Aztec, NM 87410

District IV
PO Box 2088, Santa Fe, NM 87504-2088

☐ AMENDED REPORT

WELL LOCATION AND ACREAGE DEDICATION PLAT

| | | | |
|-----------------------------------|--|--------------------|--------------------------|
| API Number <i>30-039-26312</i> | | Pool Code 72319 | Pool Name Blanco - MV |
| Property Code 17033 | Property Name ROSA UNIT | | Well Number 181A |
| Lease No. 120782 | Operator Name WILLIAMS PRODUCTION COMPANY | | Elevation 6267 |

10 Surface Location

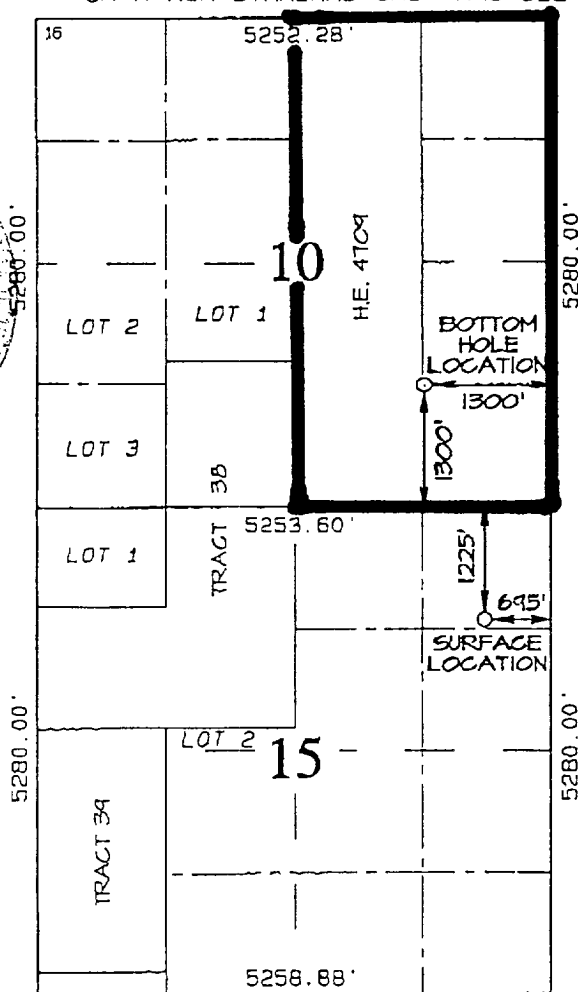
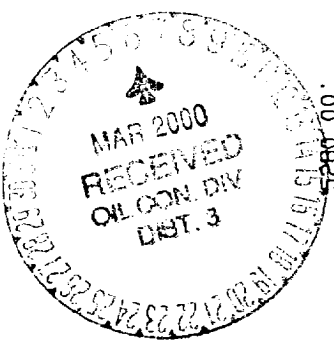
| | | | | | | | | | |
|---------------------|---------------|-----------------|-------------|---------|-----------------------|---------------------------|----------------------|------------------------|----------------------|
| Section A | Section 15 | Township 31N | Range 6W | Lot Idn | Feet from the 1225 | North/South line NORTH | Feet from the 695 | East/West line EAST | County RIO ARriba |
|---------------------|---------------|-----------------|-------------|---------|-----------------------|---------------------------|----------------------|------------------------|----------------------|

11 Bottom Hole Location If Different From Surface

| | | | | | | | | | |
|---------------------|---------------|-----------------|-------------|---------|--|---------------------------|--|------------------------|----------------------|
| Section B | Section 10 | Township 31N | Range 6W | Lot Idn | Feet from the <i>548</i> 1200 | North/South line SOUTH | Feet from the <i>548</i> 1300 | East/West line EAST | County RIO ARriba |
|---------------------|---------------|-----------------|-------------|---------|--|---------------------------|--|------------------------|----------------------|

| | | | |
|------------------|----------------------|-------------------------|-----------|
| Acres 320 E/2 | Joint or Infill I | Consolidation Code U | Order No. |
|------------------|----------------------|-------------------------|-----------|

ALLOWABLE WILL BE ASSIGNED TO THIS COMPLETION UNTIL ALL INTERESTS HAVE BEEN CONSOLIDATED
OR A NON-STANDARD UNIT HAS BEEN APPROVED BY THE DIVISION



17 OPERATOR CERTIFICATION

I hereby certify that the information contained herein is true and complete to the best of my knowledge and belief.

Steve Nelson
Signature

Steve Nelson
Printed Name

Agent, Nelson Consulting
Title

January 14, 2000
Date

18 SURVEYOR CERTIFICATION

I hereby certify that the well location shown on this plat was plotted from field notes of actual surveys made by me or under my supervision, and that the same is true and correct to the best of my belief.

NOVEMBER 29, 1999

Date of Survey

Signature and Seal of Surveyor

Neale C. Edwards
NEALE C. EDWARDS
NEW MEXICO
6857
Certificate No. 6857

WILLIAMS PRODUCTION COMPANY ROSA UNIT #181A

1225' FNL & 695' FEL, SECTION 15, T31N, R6W, N.M.P.M.
RIO ARriba COUNTY, NEW MEXICO

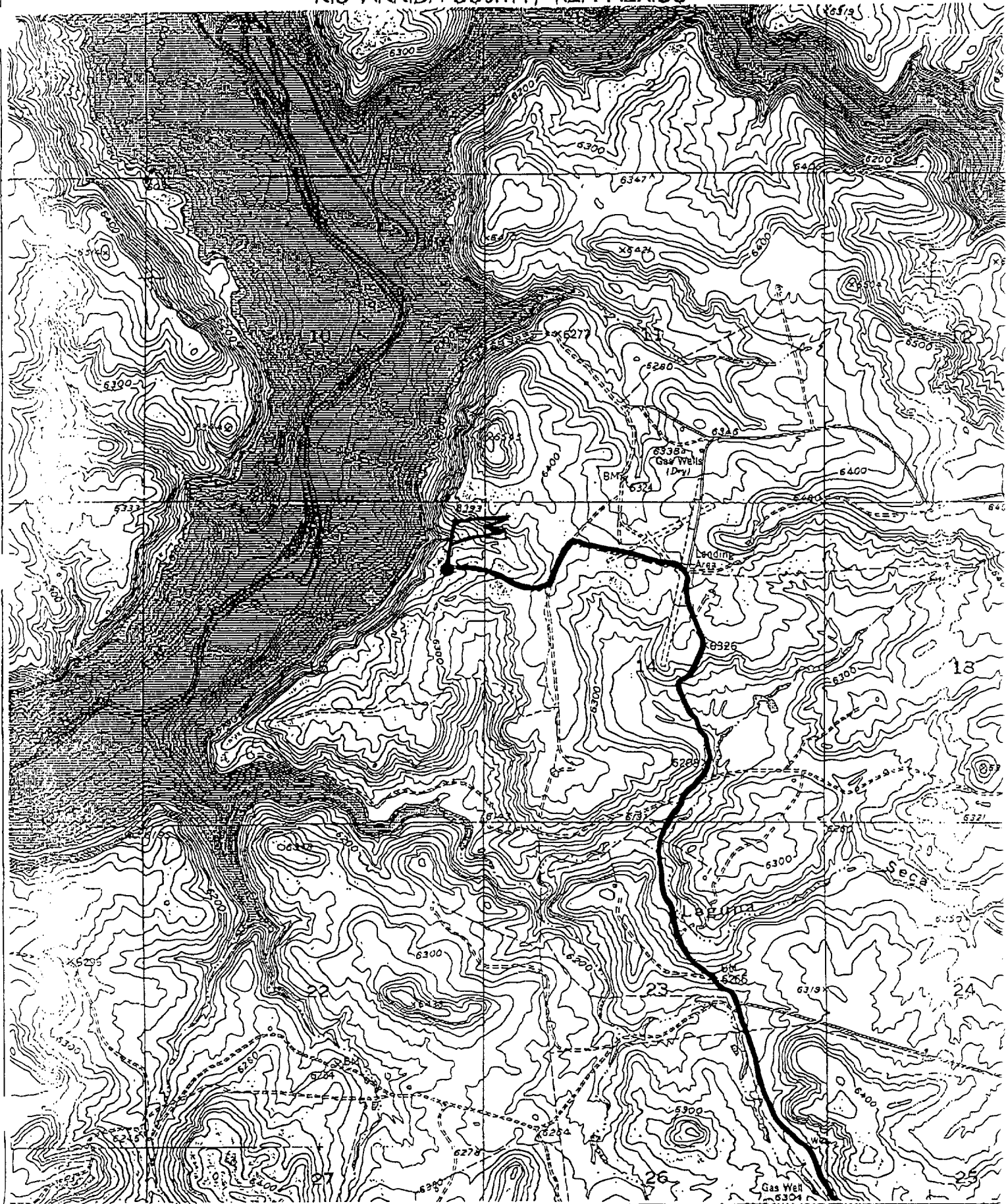
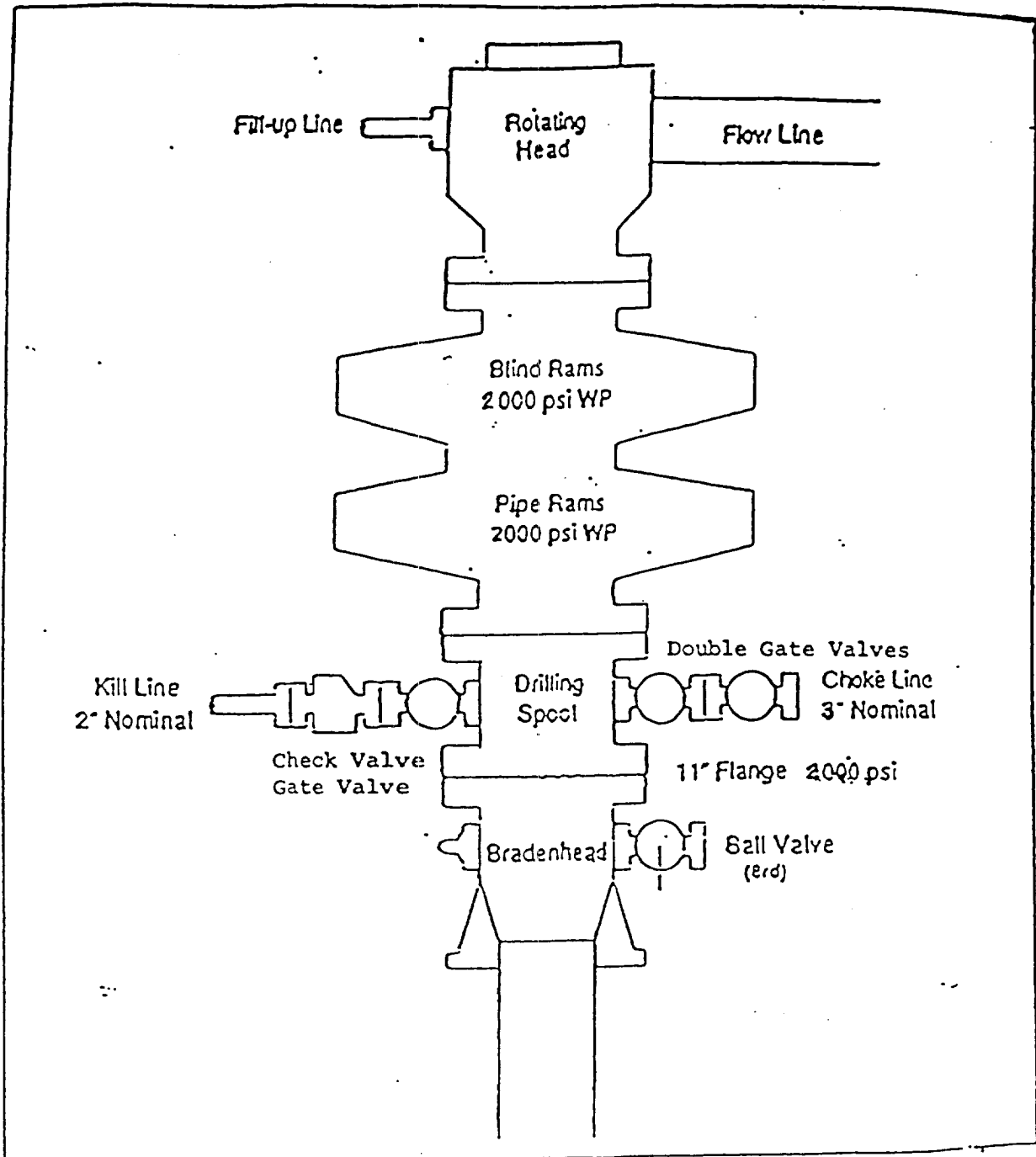


EXHIBIT 1

BOP STACK ARRANGEMENT



All ram type preventers and related equipment will be hydraulically tested at nipple-up and after any use under pressure to 1500 psi. The blind rams will be hydraulically activated and checked for operational readiness each time pipe is pulled out of the hole. All checks of the BOP stack and equipment will be noted on the daily drilling report. The BOP equipment will include a kelly cock with handle, floor safety valve with change overs for each tool joint in the string, and choke manifold all rated to 2000 psi.