

District I
PO Box 1980, Hobbs, NM 88241-1980
District II
811 South First, Artesia, NM 88210
District III
1000 Rio Brazos Rd., Aztec, NM 87410
District IV
2040 South Pacheco, Santa Fe, NM 87505

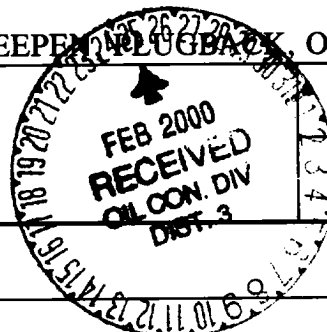
State of New Mexico
Energy, Minerals & Natural Resources Department

OIL CONSERVATION DIVISION
2040 South Pacheco
Santa Fe, NM 87505

Form C-101
Revised October 18, 1994
Instructions on back
Submit to Appropriate District Office
State Lease - 6 Copies
Fee Lease - 5 Copies
☐ AMENDED REPORT

APPLICATION FOR PERMIT TO DRILL, RE-ENTER, DEEPE~~N~~^N PLUG BACK, OR ADD A ZONE

¹ Operator Name and Address. Williams Production Company P.O. Box 3102, MS 37-2 Tulsa, OK 74101		² OGRID Number 120782
⁴ Property Code 17033	⁵ Property Name Rosa Unit	³ API Number 30039-26386
		⁶ Well No. 183A



⁷ Surface Location

UL or lot no.	Section	Township	Range	Lot Idn	Feet from the	North/South line	Feet from the	East/West line	County
F	19	31N	5W		1585'	North	790'	West	Rio Arriba

⁸ Proposed Bottom Hole Location If Different From Surface

UL or lot no.	Section	Township	Range	Lot Idn	Feet from the	North/South line	Feet from the	East/West line	County
⁹ Proposed Pool Blanco - Mesa Verde					¹⁰ Proposed Pool 2				

¹¹ Work Type Code N	¹² Well Type Code G	¹³ Cable/Rotary Rotary	¹⁴ Lease Type Code P	¹⁵ Ground Level Elevation 6299' GR
¹⁶ Multiple No	¹⁷ Proposed Depth 6081' KB	¹⁸ Formation Blanco - Mesa Verde	¹⁹ Contractor Aztec Well Service	²⁰ Spud Date April 1, 2000

²¹ Proposed Casing and Cement Program

Hole Size	Casing Size	Casing weight/foot	Setting Depth	Sacks of Cement	Estimated TOC
12-1/4"	9-5/8" K-55	36#	250' KB	130 sx (176 cuft)	Surface
8-3/4"	7" K-55	20#	3646' KB	585 sx (1096cuft)	Surface
6-1/4"	4-1/2"	10.5#	3546' - 6081' KB	180 sx (389 cuft)	Top of Liner

²² Describe the proposed program. If this application is to DEEPE~~N~~^N or PLUG BACK give the data on the present productive zone and proposed new productive zone. Describe the blowout prevention program, if any. Use additional sheets if necessary.

Williams Exploration & Production proposes to drill a vertical well with an 12-1/4" hole with water & benex to approx. 250' KB and set 9-5/8" 36# K55 surface casing, cement to surface with 130 sx of Class Type III, 2% CaCl2 (176 cu ft). Then drill 8-3/4" hole to 3646' KB, set 7" K-55 casing. Cement Lead with 410 sx (854 cu ft) of Premium Lite 65/35 Poz/Type III, with 8% gel, 1% CaCl2; Cement Tail with 175 sx (242 cuft) of class Type III with 1% CaCl2. Drill 6-1/4" hole to 6081'KB, set 4-1/2" K-55 casing, set production liner, cement Lead with 70 sx (150 Cuft) of Lite HS 65/35, cement Tail with 110 sx (239 cu ft) of Pre. Lite HS, 65/35.. Run cased hole log (TMDL). While drill pipe in use run not less than one BOP test per day. Set 9-5/8" 36# K-55 production casing from 250'KB to surface, set 7", 20# K-55 casing from 250'KB to 3646'KB, and set 4-1/2" 10.5# K-55 casing from 3546'KB to 6081'KB. Top of cement should circulate to surface (will adjust volumes based upon caliper log). A cement bond log will be run across all intervals to be perforated & find top of cement behind all casing strings. Pressure test 7" & 4-1/2" casing to 3300# for 15 minutes. Run 2-3/8", 4.7#, J-55 EUE tubing with a SN (1.91" ID) on top of bottom joint. Land tubing 50' above bottom Point Lookout perforations. Will test Mesa Verde through perforated casing. Will fracture stimulate and put on for production test. Surface ownership is Federal (BLM). Will obtain surface ROW. Formation tops: Ojo Alamo- 2421', Kirtland-2551', Fruitland-2941', Pictured Cliffs 3171', Lewis 3461', Cliff House 5361', Menefee 5406', Point Lookout 5631', Mancos 5951', TD 6081', all KB.

²³ I hereby certify that the information given above is true and complete to the best of my knowledge and belief.

Signature:

Printed name: Steve Nelson

Title: Agent, Nelson Consulting, Inc.

Date: February 22, 2000

Phone: 505-327-6331

OIL CONSERVATION DIVISION

Approved by:

Title: SUPERVISOR DISTRICT #3

Approval Date: FEB 25 2000

Expiration Date: FEB 25 2001

Conditions of Approval :
Attached ☐

District I
PO Box 1980, Hobbs, NM 88241-1980

State of New Mexico
Energy, Minerals & Natural Resources Department

Form C-102
Revised February 21, 1994

District II
PO Drawer 00, Artesia, NM 88211-0719

OIL CONSERVATION DIVISION
PO Box 2088
Santa Fe, NM 87504-2088

Instructions on back
Submit to Appropriate District Office
State Lease - 4 Copies
Fee Lease - 3 Copies

District III
1000 Rio Brazos Rd., Aztec, NM 87410

District IV
PO Box 2088, Santa Fe, NM 87504-2088

☐ AMENDED REPORT

WELL LOCATION AND ACREAGE DEDICATION PLAT

*API Number 30-039-26386		*Pool Code 72319	*Pool Name Blanco - MV
*Property Code 17033	*Property Name ROSA UNIT		*Well Number 183A
*OGRIID No. 120782	*Operator Name WILLIAMS PRODUCTION COMPANY		*Elevation 6299'

10 Surface Location

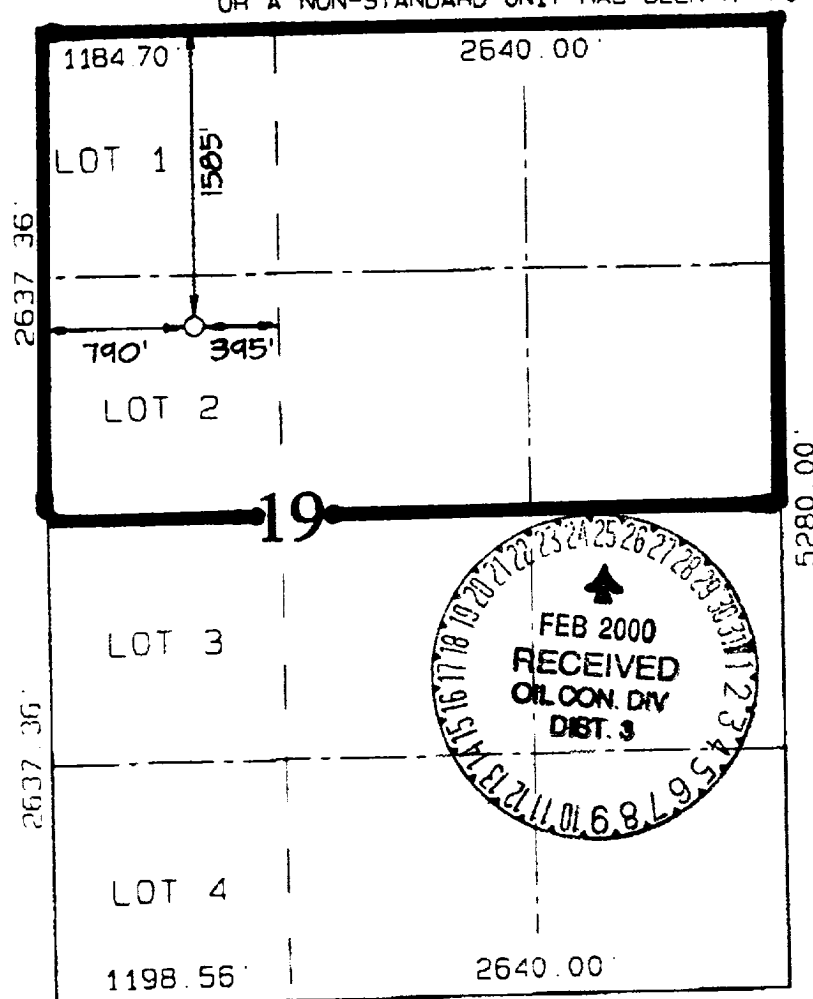
UL or Lot No	Section	Township	Range	Lot Idn	Feet from the	North/South line	Feet from the	East/West line	County
F	19	31N	5W		1585	NORTH	790	WEST	RIO ARriba

11 Bottom Hole Location If Different From Surface

UL or Lot No	Section	Township	Range	Lot Idn	Feet from the	North/South line	Feet from the	East/West line	County

*Dedicated Acres 232.01 N/2	*Joint or Infill I	*Consolidation Code U	*Order No
---------------------------------------	------------------------------	---------------------------------	-----------

NO ALLOWABLE WILL BE ASSIGNED TO THIS COMPLETION UNTIL ALL INTERESTS HAVE BEEN CONSOLIDATED OR A NON-STANDARD UNIT HAS BEEN APPROVED BY THE DIVISION



17 OPERATOR CERTIFICATION

I hereby certify that the information contained herein is true and complete to the best of my knowledge and belief.

Signature

Steve Nelson

Printed Name

Agent, Nelson Consulting

Title

February 22, 2000

Date

18 SURVEYOR CERTIFICATION

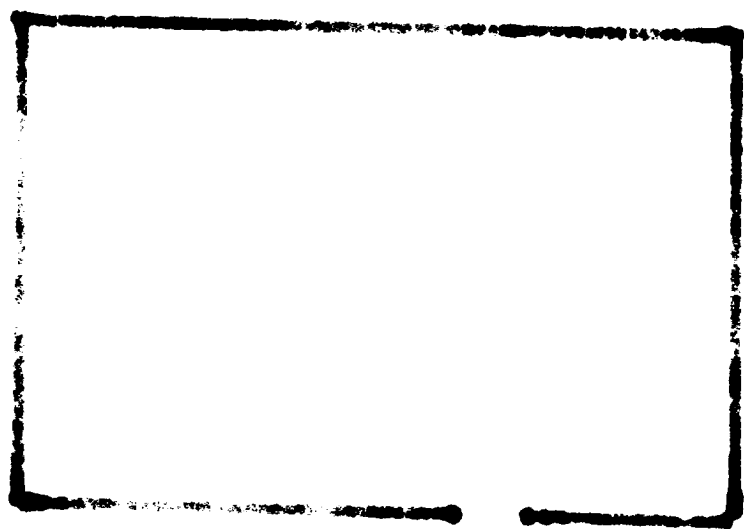
I hereby certify that the well location shown on this plat was plotted from field notes of actual surveys made by me or under my supervision, and that the same is true and correct to the best of my belief.

AUGUST 14, 1999

Date of Survey

Signature and Seal of Surveyor

Certificate Number 6857



WILLIAMS PRODUCTION COMPANY ROSA UNIT #183A

1585' FNL & 790' FNL, SECTION 19, T31N, R5W, N.M.P.M.
RIO ARriba COUNTY, NEW MEXICO

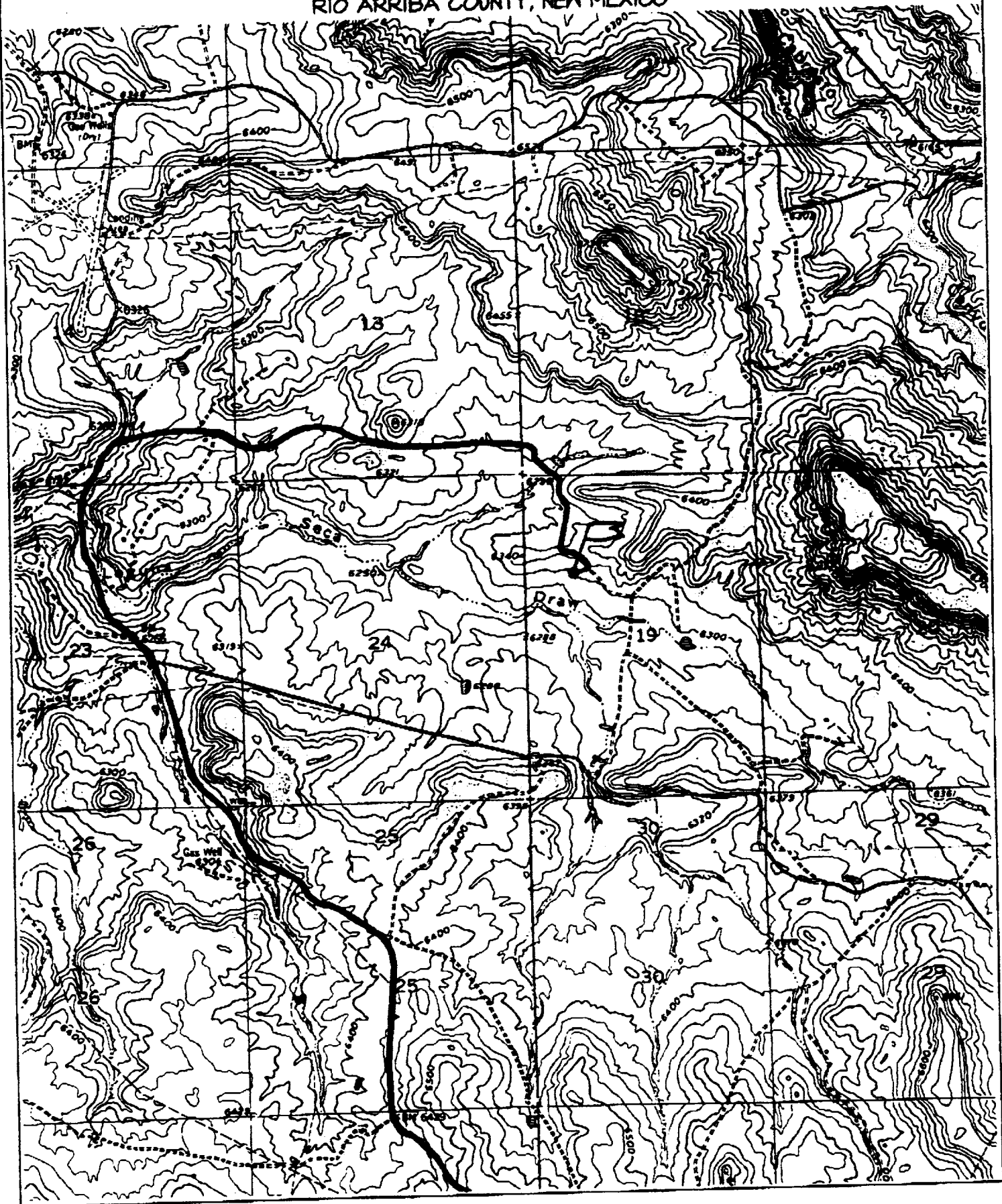
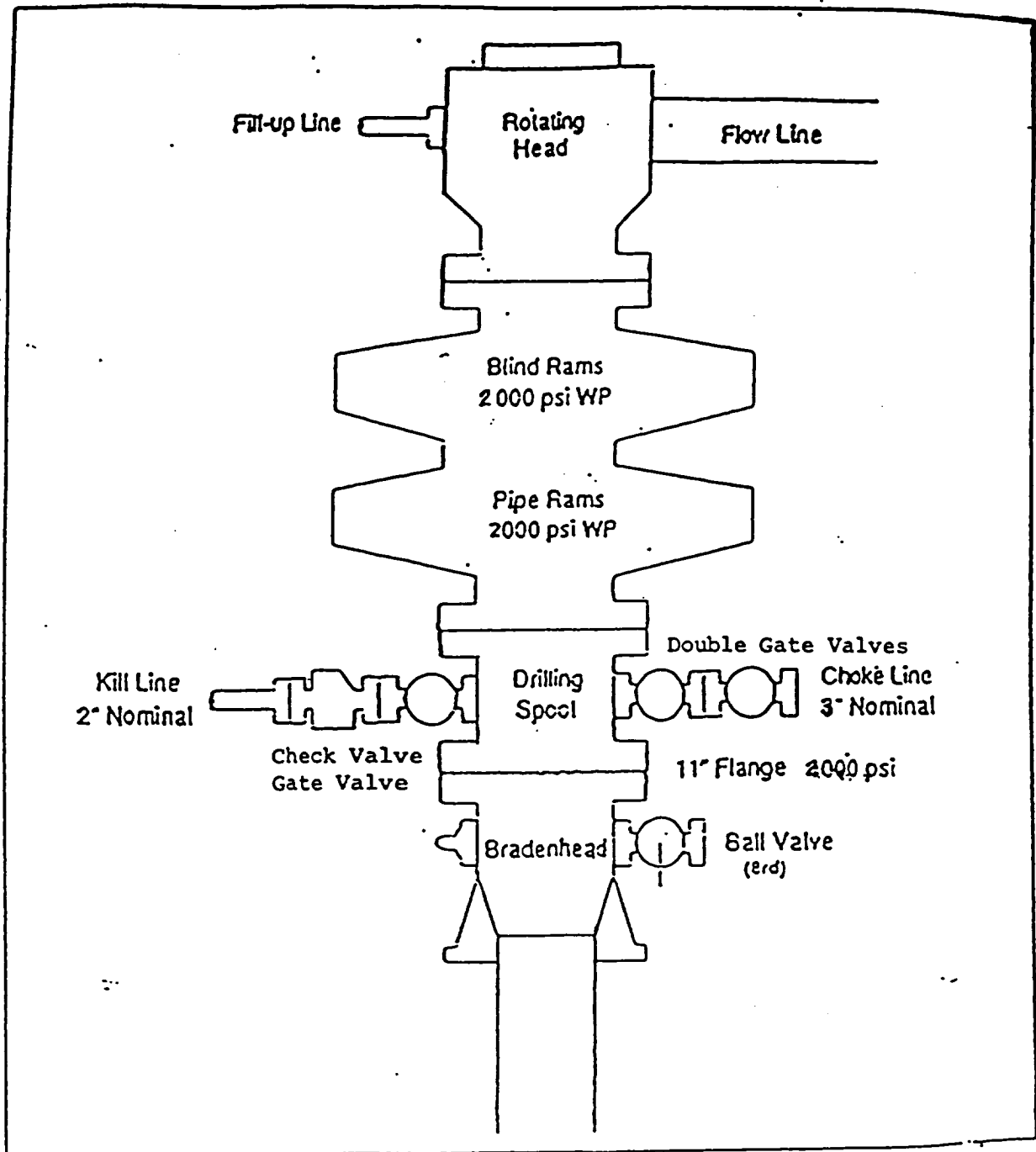


EXHIBIT 1

BOP STACK ARRANGEMENT



All ram type preventers and related equipment will be hydraulically tested at nipple-up and after any use under pressure to 1500 psi. The blind rams will be hydraulically activated and checked for operational readiness each time pipe is pulled out of the hole. All checks of the BOP stack and equipment will be noted on the daily drilling report. The BOP equipment will include a kelly cock with handle, floor safety valve with change overs for each tool joint in the string, and choke manifold all rated to 2000 psi.

EXHIBIT 2

Choke Manifold & Accumulator Schematic

